

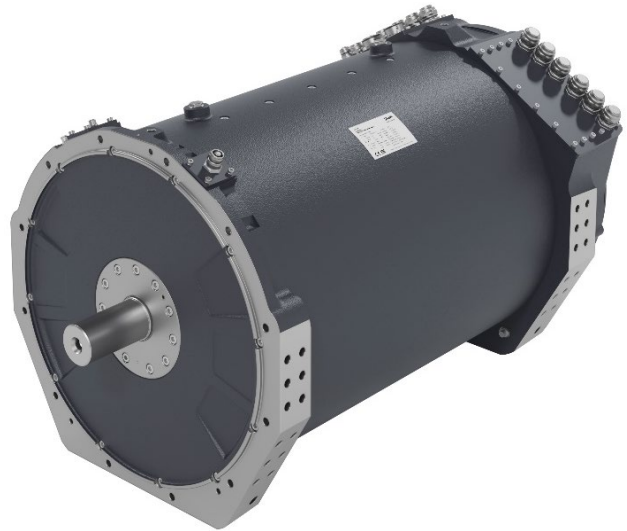
## Data Sheet

**EM-PMI540B-T4000**

Electric machine, permanent magnet internal

## FEATURES

- Synchronous Reluctance assisted Permanent Magnet (SRPM) technology
- Extremely compact and robust aluminum frame structure
- Highest efficiency throughout the operation range on the market (~96 %)
- Liquid cooled with water-glycol mixture
- Low coolant flow required
- Allowed coolant temperature up to +65°C
- IP67 enclosure class to maximize reliability
- Multiple mounting possibilities



## GENERATOR SPECIFIC FEATURES

- Standard SAE flange mounting to match the diesel engine connection
- Wide selection of speed ratings allowing the generator to be selected to customer specific applications with various voltage requirements
- Can be also used as starter motor for the ICE

## MOTOR SPECIFIC FEATURES

- Extended speed and torque capabilities compared to standard PM motors from Danfoss reluctance assisted permanent magnet motor technology
- Motor structure is designed to be able to produce high starting torque: EM-PMI motor can produce instantly full torque to a non-rotating shaft
- Optimized speed range to meet the most common gear ratios used in heavy mobile machinery

## GENERAL

The machine is developed especially for demanding applications. The design of these machines makes them smaller, lighter and more efficient than conventional products on the market.

## TYPICAL APPLICATIONS

- Generator for diesel-electric/serial hybrid applications
- Traction/propulsion motor
- Generator/motor for parallel hybrid applications

## SPECIFICATIONS

General electrical properties	
Nominal voltage (line-to-line)	500 V <sub>AC</sub>
Voltage stress	IEC 60034-25:2009, Curve A: Without filters for motors up to 500 V <sub>AC</sub>
Nominal efficiency	96 %
Pole pair number	8
Power supply	Inverter fed
Nominal inverter switching frequency	8 kHz
Minimal inverter switching frequency	4 kHz (with 10 % derated performance)
Maximum phase-to-phase peak-to-peak voltage without du/dt	1.5 kV
Maximum voltage rise time without du/dt	8 kV/μs

Basic information	
Machine type	Synchronous reluctance assisted permanent magnet
Frame material	Frame including coolant circuit: Aluminum 6063 Endshields: AlSi7Mg
Mounting direction	Only horizontal assembly (see user guide for details)
Mounting (IEC 60034-7)	See Table 7
Standard flange D-end (SAE J617)	SAE ½ mating transmission housing
D-end shaft	Male cylindrical shaft, diameter 70 mm h7
Bearing type	Standard: 6216/C3 (with LGHP2 grease) +BIN option: D-end: 6216/C3 (with LGHP2 grease) N-end: 6216/ C3VL0241 (with LGHP2 grease) +BIA option: 6216/C3VL0241 (with LGHP2 grease)
Standard rotation direction	Clockwise (both directions possible)
Protection class	IP67
Duty type (IEC 60034-1)	S1/S9
Machine coating	Coating is optional
Nominal altitude (IEC 60034-1)	Up to 4000 m (see Picture 1 for details)

Mechanical	
Total weight	987.9 kg (+/- 2 %, no options)
Moment of inertia	10.9 kgm <sup>2</sup>
Torsional stiffness of shaft drive end	18*10 <sup>5</sup> Nm/rad (130 mm from the end of D-end shaft)
Rotating mass	451 kg
Maximum static torque range on the shaft, max. 25000 cycles, R=0 (*)	7500 Nm
Maximum dynamic torque range on the shaft, max. 1e6 cycles, R=0 (*)	6000 Nm
Maximum allowed vibratory torque range, 1e9...1e10 cycles (*)	0.3 x nominal torque of machine
Maximum deceleration (fault stop)	1000 rad/s <sup>2</sup>

(\*) The values are based on structural analysis, and they are not applicable to any marine class rules or requirements.

Dimensions	
Length (frame)	1014 mm
Diameter (frame)	600 mm

Cooling	
Cooling liquid	Plain water with appropriate corrosive inhibitor (max. 50 % corrosive inhibitor)
Cooling liquid corrosive inhibitor type	Ethylene glycol (Glysantin G48 recommended)
Cooling method (IEC 60034-6)	IC 71 W
Minimum cooling liquid flow	40 l/min
Coolant circuit capacity	5.4 l
Maximum operating pressure	2 bar
Pressure loss	0.5 bar with 40 l/min (+25°C coolant) (see Picture 2 for details)
Nominal cooling liquid temperature	+65°C (derating required if exceeded), +40°C with +CL option
Minimum cooling liquid temperature	-20°C
Maximum cooling liquid temperature	+70°C

Temperature rating	
Insulation class (IEC 60034-1)	H (+180°C)
Temperature rise (IEC 60034-1)	+85°C / +110°C with +CL option
Maximum winding temperature	+150°C
Nominal ambient temperature	+65°C / +45°C with +CL option
Min. ambient temperature	-40°C

Vibration & Shock tolerance	
Mechanical vibration	3.19 G <sub>RMS</sub> ISO 16750-3:2023 Test XVI - Hybrid-electric/fully electric commercial vehicle, sprung mass (vehicle body), large and heavy DUT
Mechanical shock	50 G ISO 16750-3:2023 4.2.2 Test for devices on rigid points on the body and on the frame

Connections	
Coolant connection	2 x G3/4 bore (see dimension drawing for details)
Cable direction	Cable direction fixed upwards
HV cables	2 x 3 x 95 mm <sup>2</sup> max. 4 x 3 x 95 mm <sup>2</sup> max.
HV cable glands	Pflitsch blueglobe TRI bg 232ms tri
HV cable recommended type	HUBER+SUHNER Radox Elastomer S, screened, single core, automotive cable (FHLR4GC13X) <a href="http://www.hubersuhner.com">www.hubersuhner.com</a>
HV cable lug size	70-8, 95-8
Recommended cable lug	70 mm <sup>2</sup> : Druseidt with narrow flange 03906 95 mm <sup>2</sup> : Druseidt with narrow flange 03910 <a href="http://www.druseidt.de">www.druseidt.de</a>
HV connection boxes	2 x 3 phase box 4 x 3 phase box

LV connector	47 pin DEUTSCH HD34-24-47PE for resolver and temperature measurement <a href="https://www.te.com">https://www.te.com</a>
LV connector type	DEUTSCH HD34-24-47PE
LV connector pin type	Gold plated
LV mating connector type	DEUTSCH HD36-24-47SE or DEUTSCH HD36-24-47SE-059 (**)
LV mating connector pin type	DEUTSCH 0462-201-1631 DEUTSCH 0462-005-2031 Plug: DEUTSCH 0413-204-2005 (size 20) Plug: DEUTSCH 0413-003-1605 (size 16)
LV connector pin configuration	See Table 1 and Table 2
Angle/Speed sensor	Type: Externally excited SIN/COS resolver Pole pair number 8 Input 7 V Frequency 10 kHz Output 2 V +/- 0.2 V Input impedance 80 +/- 16 Ohm Output impedance 380 +/- 76 Ohm
Anti-condensation heater (+HEAT2 option)	2 x 130 W 230 V <sub>AC</sub> single-phase heater resistors
Heater connector (+HEAT2 option)	Hummel art no. 7651 0 51 01 D (combination of housing 7651 0 00 00 0, insert 7084 9 51 10 1 / 7084 9 51 12 1, crimp pins 7010 9 42 01 1) <a href="https://www.hummel.com">https://www.hummel.com</a>
Heater mating connector	Hummel art no. 7550 6 51 02 D (combination of housing 7550 6 00 00 0, insert 7084 9 51 10 2 / 7084 9 51 12 2, crimp socket 7010 9 42 00 2)
Heater connector pin type	Hummel art. no. 7010 9 42 01 1
Heater connector pin configuration	See Table 5
Bearing temp. measurement connector type	D-end: 4-pin M12 A coded male N-end: DEUTSCH HD34-24-47PE
Bearing temp. measurement mating type	D-end: 4-pin M12 A coded female N-end: DEUTSCH HD36-24-47SE or DEUTSCH HD36-24-47SE-059
Bearing temp. measurement connector pin configuration	See Table 1, Table 2 and Table 6

(\*\* Connector IP-rating of IP67 is reached only when connector mating part is installed and all unused pin holes are plugged in the connector mating part with the following plugs, depending on the hole size: DEUTSCH 0413-003-1605 (size 16) or DEUTSCH 0413-204-2005 (size 20). For further information, contact the connector manufacturer TE connectivity directly.

Description		PIN	Option
Temperature 1	phase U1, main sensor, PT100 (P)	47	
	phase U1, main sensor, PT100 (N)	46	
Temperature 2	phase V1, main sensor, PT100 (P)	33	
	phase V1, main sensor, PT100 (N)	32	
Temperature 3	phase W1, main sensor, PT100 (P)	45	
	phase W1, main sensor, PT100 (N)	31	
Temperature 4	phase U2, main sensor, PT100 (P)	30	
	phase U2, main sensor, PT100 (N)	29	
Temperature 5	phase V2, main sensor, PT100 (P)	44	
	phase V2, main sensor, PT100 (N)	43	
Temperature 6	phase W2, main sensor, PT100 (P)	28	
	phase W2, main sensor, PT100 (N)	16	
Temperature 7	phase U1, spare sensor, PT100 (P)	42	+TEMP5
	phase U1, spare sensor, PT100 (N)	27	
Temperature 8	phase V1, spare sensor, PT100 (P)	15	+TEMP5
	phase V1, spare sensor, PT100 (N)	14	
Temperature 9	phase W1, spare sensor, PT100 (P)	40	+TEMP5
	phase W1, spare sensor, PT100 (N)	26	
Temperature 10	phase U2, spare sensor, PT100 (P)	41	+TEMP5
	phase U2, spare sensor, PT100 (N)	13	
Temperature 11	phase V2, spare sensor, PT100 (P)	39	+TEMP5
	phase V2, spare sensor, PT100 (N)	38	
Temperature 12	phase W2, spare sensor, PT100 (P)	25	+TEMP5
	phase W2, spare sensor, PT100 (N)	12	
Resolver COS	Resolver, RES_COS_N, Inbuilt non-contacting	35	
Resolver COS	Resolver, RES_COS_P, Inbuilt non-contacting	20	
Resolver SIN	Resolver, RES_SIN_N, Inbuilt non-contacting	36	
Resolver SIN	Resolver, RES_SIN_P, Inbuilt non-contacting	21	
Resolver EXCN	Resolver, EXCN, Inbuilt non-contacting	22	
Resolver EXCP	Resolver, EXCP, Inbuilt non-contacting	10	
Resolver shield	Resolver, SHIELD/GROUND, Inbuilt non-contacting	34	
Resolver2 COS	Resolver 2, RES_COS_N, Inbuilt non-contacting	37	+RES2
Resolver2 COS	Resolver 2, RES_COS_P, Inbuilt non-contacting	24	+RES2
Resolver2 SIN	Resolver 2, RES_SIN_N, Inbuilt non-contacting	23	+RES2
Resolver2 SIN	Resolver 2, RES_SIN_P, Inbuilt non-contacting	11	+RES2
Resolver2 EXCN	Resolver 2, EXCN, Inbuilt non-contacting	9	+RES2
Resolver2 EXCP	Resolver 2, EXCP, Inbuilt non-contacting	8	+RES2
Resolver2 shield	Resolver 2, SHIELD/GROUND, Inbuilt non-contacting	4	+RES2
Bearing temperature, sensor 1	PT100	2	
Bearing temperature, sensor 1	PT100_GND	18	
Bearing temperature, sensor 2	PT100	3	
Bearing temperature, sensor 2	PT100_GND	19	

Table 1 Pin configuration of LV-connector (+DUAL)

LV-connector 1			
Description		PIN	Option
Temperature 1	phase U1, main sensor, PT100 (P)	47	
	phase U1, main sensor, PT100 (N)	46	
Temperature 2	phase V1, main sensor, PT100 (P)	33	
	phase V1, main sensor, PT100 (N)	32	
Temperature 3	phase W1, main sensor, PT100 (P)	45	
	phase W1, main sensor, PT100 (N)	31	
Temperature 4	phase U2, main sensor, PT100 (P)	30	
	phase U2, main sensor, PT100 (N)	29	
Temperature 5	phase V2, main sensor, PT100 (P)	44	
	phase V2, main sensor, PT100 (N)	43	
Temperature 6	phase W2, main sensor, PT100 (P)	28	
	phase W2, main sensor, PT100 (N)	16	
Temperature 7	phase U3, main sensor, PT100 (P)	42	
	phase U3, main sensor, PT100 (N)	27	
Temperature 8	phase V3, main sensor, PT100 (P)	15	
	phase V3, main sensor, PT100 (N)	14	
Temperature 9	phase W3, main sensor, PT100 (P)	40	
	phase W3, main sensor, PT100 (N)	26	
Temperature 10	phase U4, main sensor, PT100 (P)	41	
	phase U4, main sensor, PT100 (N)	13	
Temperature 11	phase V4, main sensor, PT100 (P)	39	
	phase V4, main sensor, PT100 (N)	38	
Temperature 12	phase W4, main sensor, PT100 (P)	25	
	phase W4, main sensor, PT100 (N)	12	
Resolver COS	Resolver, RES_COS_N, Inbuilt non-contacting	35	
Resolver COS	Resolver, RES_COS_P, Inbuilt non-contacting	20	
Resolver SIN	Resolver, RES_SIN_N, Inbuilt non-contacting	36	
Resolver SIN	Resolver, RES_SIN_P, Inbuilt non-contacting	21	
Resolver EXCN	Resolver, EXCN, Inbuilt non-contacting	22	
Resolver EXCP	Resolver, EXCP, Inbuilt non-contacting	10	
Resolver shield	Resolver, SHIELD/GROUND, Inbuilt non-contacting	34	
Resolver2 COS	Resolver 2, RES_COS_N, Inbuilt non-contacting	37	+RES2
Resolver2 COS	Resolver 2, RES_COS_P, Inbuilt non-contacting	24	+RES2
Resolver2 SIN	Resolver 2, RES_SIN_N, Inbuilt non-contacting	23	+RES2
Resolver2 SIN	Resolver 2, RES_SIN_P, Inbuilt non-contacting	11	+RES2
Resolver2 EXCN	Resolver 2, EXCN, Inbuilt non-contacting	9	+RES2
Resolver2 EXCP	Resolver 2, EXCP, Inbuilt non-contacting	8	+RES2
Resolver2 shield	Resolver 2, SHIELD/GROUND, Inbuilt non-contacting	4	+RES2
Bearing temperature, sensor 1	PT100	2	
Bearing temperature, sensor 1	PT100_GND	18	
Bearing temperature, sensor 2	PT100	3	
Bearing temperature, sensor 2	PT100_GND	19	
LV-connector 2			
Description		PIN	Option
Temperature 13	phase U1, spare sensor, PT100 (P)	47	+TEMP5
	phase U1, spare sensor, PT100 (N)	46	
Temperature 14	phase V1, spare sensor, PT100 (P)	33	+TEMP5
	phase V1, spare sensor, PT100 (N)	32	

Temperature 15	phase W1, spare sensor, PT100 (P)	45	+TEMP5
	phase W1, spare sensor, PT100 (N)	31	
Temperature 16	phase U2, spare sensor, PT100 (P)	30	+TEMP5
	phase U2, spare sensor, PT100 (N)	29	
Temperature 17	phase V2, spare sensor, PT100 (P)	44	+TEMP5
	phase V2, spare sensor, PT100 (N)	43	
Temperature 18	phase W2, spare sensor, PT100 (P)	28	+TEMP5
	phase W2, spare sensor, PT100 (N)	16	
Temperature 19	phase U3, spare sensor, PT100 (P)	42	+TEMP5
	phase U3, spare sensor, PT100 (N)	27	
Temperature 20	phase V3, spare sensor, PT100 (P)	15	+TEMP5
	phase V3, spare sensor, PT100 (N)	14	
Temperature 21	phase W3, spare sensor, PT100 (P)	40	+TEMP5
	phase W3, spare sensor, PT100 (N)	26	
Temperature 22	phase U4, spare sensor, PT100 (P)	41	+TEMP5
	phase U4, spare sensor, PT100 (N)	13	
Temperature 23	phase V4, spare sensor, PT100 (P)	39	+TEMP5
	phase V4, spare sensor, PT100 (N)	38	
Temperature 24	phase W4, spare sensor, PT100 (P)	25	+TEMP5
	phase W4, spare sensor, PT100 (N)	12	

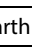
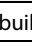
Table 2 Pin configuration of LV-connectors (+QUAD)

Measurement	Description	PIN	Option
<b>N-END</b>			
HEAT	Heater, ground / protective earth	1 $\perp$	+HEAT
HEAT	Heater, neutral	2	+HEAT
HEAT	Heater, phase, 230 V <sub>AC</sub>	3	+HEAT
Resolver shield	Resolver, SHIELD/GROUND, Inbuilt non-contacting	4 $\perp$	+RES1
Resolver COS	Resolver, RES_COS_N, Inbuilt non-contacting	5	+RES1
Resolver COS	Resolver, RES_COS_P, Inbuilt non-contacting	6	+RES1
Resolver SIN	Resolver, RES_SIN_N, Inbuilt non-contacting	7	+RES1
Resolver SIN	Resolver, RES_SIN_P, Inbuilt non-contacting	8	+RES1
Resolver EXCN	Resolver, EXCN, Inbuilt non-contacting	9	+RES1
Resolver EXCP	Resolver, EXCP, Inbuilt non-contacting	10	+RES1
Temperature 1	phase U1, main sensor, PT100 (P)	11	
	phase U1, main sensor, PT100 (N)	12	
Temperature 2	phase V1, main sensor, PT100 (P)	13	
	phase V1, main sensor, PT100 (N)	14	
Temperature 3	phase W1, main sensor, PT100 (P)	15	
	phase W1, main sensor, PT100 (N)	16	
Temperature 4	phase U2, main sensor, PT100 (P)	17	
	phase U2, main sensor, PT100 (N)	18	
Temperature 5	phase V2, main sensor, PT100 (P)	19	
	phase V2, main sensor, PT100 (N)	20	
Temperature 6	phase W2, main sensor, PT100 (P)	21	
	phase W2, main sensor, PT100 (N)	22	
Temperature 7	phase U1, spare sensor, PT100 (P)	23	+TEMP5
	phase U1, spare sensor, PT100 (N)	24	
Temperature 8	phase V1, spare sensor, PT100 (P)	25	+TEMP5

	phase V1, spare sensor, PT100 (N)	26	
Temperature 9	phase W1, spare sensor, PT100 (P)	27	+TEMP5
	phase W1, spare sensor, PT100 (N)	28	
Temperature 10	phase U2, spare sensor, PT100 (P)	29	+TEMP5
	phase U2, spare sensor, PT100 (N)	30	
Temperature 11	phase V2, spare sensor, PT100 (P)	31	+TEMP5
	phase V2, spare sensor, PT100 (N)	32	
Temperature 12	phase W2, spare sensor, PT100 (P)	33	+TEMP5
	phase W2, spare sensor, PT100 (N)	34	
TEMP	N/A	27	
TEMP	N/A	28	
TEMP	N/A	29	
TEMP	N/A	30	
TEMP	N/A	31	
TEMP	N/A	32	
TEMP	N/A	33	
TEMP	N/A	34	
TEMP	N/A	35	
TEMP	N/A	36	
TEMP	N/A	37	
TEMP	N/A	38	
TEMP	N/A	39	
TEMP	N/A	40	
TEMP	N/A	41	
TEMP	N/A	42	
TEMP	N/A	43	
TEMP	N/A	44	
TEMP	N/A	45	
TEMP	N/A	46	
TEMP	N/A	47	
TEMP	N/A	48	
TEMP	N/A	49	
TEMP	N/A	50	
TEMP	N/A	51	
TEMP	N/A	52	
TEMP	N/A	53	
TEMP	N/A	54	
TEMP	N/A	55	
TEMP	N/A	56	
TEMP	N/A	57	
TEMP	N/A	58	
Bearing temperature, sensor 1	PT100	59	+BTMP
Bearing temperature, sensor 1	PT100_GND	60	+BTMP
Bearing temperature, sensor 2	PT100	61	+BTMP
Bearing temperature, sensor 2	PT100_GND	62	+BTMP
Reserve		63	
Reserve		64	
Reserve		65	

Reserve		66	
Resolver2 shield	Resolver 2, SHIELD/GROUND, Inbuilt non-contacting	67	+RES2
Resolver2 COS	Resolver 2, RES_COS_N, Inbuilt non-contacting	68	+RES2
Resolver2 COS	Resolver 2, RES_COS_P, Inbuilt non-contacting	69	+RES2
Resolver2 SIN	Resolver 2, RES_SIN_N, Inbuilt non-contacting	70	+RES2
Resolver2 SIN	Resolver 2, RES_SIN_P, Inbuilt non-contacting	71	+RES2
Resolver2 EXCN	Resolver 2, EXCN, Inbuilt non-contacting	72	+RES2
Resolver2 EXCP	Resolver 2, EXCP, Inbuilt non-contacting	73	+RES2
<b>D-END 1/2</b>			
Bearing temperature, sensor 1	PT100	74	+BTMP
Bearing temperature, sensor 1	PT100_GND	75	+BTMP
Bearing temperature, sensor 2	PT100	76	+BTMP
Bearing temperature, sensor 2	PT100_GND	77	+BTMP
<b>D-END 2/2</b>			
HEAT2	Heater 2, ground / protective earth	78	+HEAT2
HEAT2	Heater 2, neutral	79	+HEAT2
HEAT2	Heater 2, phase, 230 V <sub>AC</sub>	80	+HEAT2

Table 3 Pin configuration of +LVB connection (+DUAL)

Measurement	Description	PIN	Option
<b>N-END</b>			
HEAT	Heater, ground / protective earth	1 	+HEAT
HEAT	Heater, neutral	2	+HEAT
HEAT	Heater, phase, 230 V <sub>AC</sub>	3	+HEAT
Resolver shield	Resolver, SHIELD/GROUND, Inbuilt non-contacting	4 	+RES1
Resolver COS	Resolver, RES_COS_N, Inbuilt non-contacting	5	+RES1
Resolver COS	Resolver, RES_COS_P, Inbuilt non-contacting	6	+RES1
Resolver SIN	Resolver, RES_SIN_N, Inbuilt non-contacting	7	+RES1
Resolver SIN	Resolver, RES_SIN_P, Inbuilt non-contacting	8	+RES1
Resolver EXCN	Resolver, EXCN, Inbuilt non-contacting	9	+RES1
Resolver EXCP	Resolver, EXCP, Inbuilt non-contacting	10	+RES1
Temperature 1	phase U1, main sensor, PT100 (P)	11	
	phase U1, main sensor, PT100 (N)	12	
Temperature 2	phase V1, main sensor, PT100 (P)	13	
	phase V1, main sensor, PT100 (N)	14	
Temperature 3	phase W1, main sensor, PT100 (P)	15	
	phase W1, main sensor, PT100 (N)	16	
Temperature 4	phase U2, main sensor, PT100 (P)	17	
	phase U2, main sensor, PT100 (N)	18	
Temperature 5	phase V2, main sensor, PT100 (P)	19	
	phase V2, main sensor, PT100 (N)	20	
Temperature 6	phase W2, main sensor, PT100 (P)	21	
	phase W2, main sensor, PT100 (N)	22	
Temperature 7	phase U3, spare sensor, PT100 (P)	23	
	phase U3, spare sensor, PT100 (N)	24	
Temperature 8	phase V3, spare sensor, PT100 (P)	25	
	phase V3, spare sensor, PT100 (N)	26	

Temperature 9	phase W3, spare sensor, PT100 (P)	27	
	phase W3, spare sensor, PT100 (N)	28	
Temperature 10	phase U4, spare sensor, PT100 (P)	29	
	phase U4, spare sensor, PT100 (N)	30	
Temperature 11	phase V4, spare sensor, PT100 (P)	31	
	phase V4, spare sensor, PT100 (N)	32	
Temperature 12	phase W4, spare sensor, PT100 (P)	33	
	phase W4, spare sensor, PT100 (N)	34	
Temperature 13	phase U1, spare sensor, PT100 (P)	35	+TEMP5
	phase U1, spare sensor, PT100 (N)	36	
Temperature 14	phase V1, spare sensor, PT100 (P)	37	+TEMP5
	phase V1, spare sensor, PT100 (N)	38	
Temperature 15	phase W1, spare sensor, PT100 (P)	39	+TEMP5
	phase W1, spare sensor, PT100 (N)	40	
Temperature 16	phase U2, spare sensor, PT100 (P)	41	+TEMP5
	phase U2, spare sensor, PT100 (N)	42	
Temperature 17	phase V2, spare sensor, PT100 (P)	43	+TEMP5
	phase V2, spare sensor, PT100 (N)	44	
Temperature 18	phase W2, spare sensor, PT100 (P)	45	+TEMP5
	phase W2, spare sensor, PT100 (N)	46	
Temperature 19	phase U3, spare sensor, PT100 (P)	47	+TEMP5
	phase U3, spare sensor, PT100 (N)	48	
Temperature 20	phase V3, spare sensor, PT100 (P)	49	+TEMP5
	phase V3, spare sensor, PT100 (N)	50	
Temperature 21	phase W3, spare sensor, PT100 (P)	51	+TEMP5
	phase W3, spare sensor, PT100 (N)	52	
Temperature 22	phase U4, spare sensor, PT100 (P)	53	+TEMP5
	phase U4, spare sensor, PT100 (N)	54	
Temperature 23	phase V4, spare sensor, PT100 (P)	55	+TEMP5
	phase V4, spare sensor, PT100 (N)	56	
Temperature 24	phase W4, spare sensor, PT100 (P)	57	+TEMP5
	phase W4, spare sensor, PT100 (N)	58	
Bearing temperature, sensor 1	PT100	59	+BTMP
Bearing temperature, sensor 1	PT100_GND	60	+BTMP
Bearing temperature, sensor 2	PT100	61	+BTMP
Bearing temperature, sensor 2	PT100_GND	62	+BTMP
Reserve		63	
Reserve		64	
Reserve		65	
Reserve		66	
Resolver2 shield	Resolver 2, SHIELD/GROUND, Inbuilt non-contacting	67	+RES2
Resolver2 COS	Resolver 2, RES_COS_N, Inbuilt non-contacting	68	+RES2
Resolver2 COS	Resolver 2, RES_COS_P, Inbuilt non-contacting	69	+RES2
Resolver2 SIN	Resolver 2, RES_SIN_N, Inbuilt non-contacting	70	+RES2
Resolver2 SIN	Resolver 2, RES_SIN_P, Inbuilt non-contacting	71	+RES2
Resolver2 EXCN	Resolver 2, EXCN, Inbuilt non-contacting	72	+RES2
Resolver2 EXCP	Resolver 2, EXCP, Inbuilt non-contacting	73	+RES2

D-END 1/2

Bearing temperature, sensor 1	PT100	74	+BTMP
Bearing temperature, sensor 1	PT100_GND	75	+BTMP
Bearing temperature, sensor 2	PT100	76	+BTMP
Bearing temperature, sensor 2	PT100_GND	77	+BTMP
<b>D-END 2/2</b>			
HEAT2	Heater 2, ground / protective earth	78	+HEAT2
HEAT2	Heater 2, neutral	79	+HEAT2
HEAT2	Heater 2, phase, 230 V <sub>AC</sub>	80	+HEAT2

Table 4 Pin configuration of +LVB connection (+QUAD)


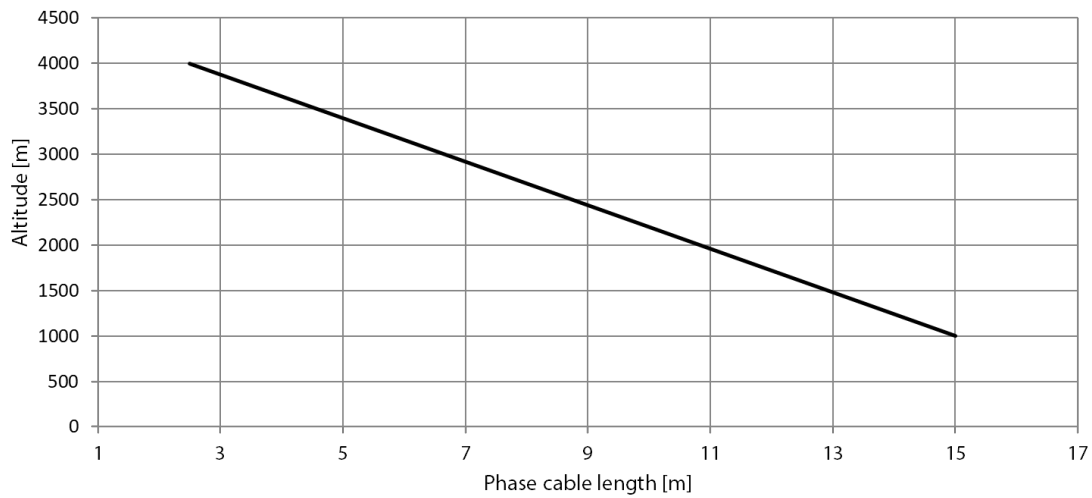
PIN	Description
1	Phase, 230 V <sub>AC</sub>
2	Neutral
	Ground/protective earth
4	Reserve
5	Reserve

Table 5 Pin configuration of heater

PIN	Description
1	PT100, sensor 1
2	PT100_GND, sensor 1
3	PT100, sensor 2
4	PT100_GND, sensor 2

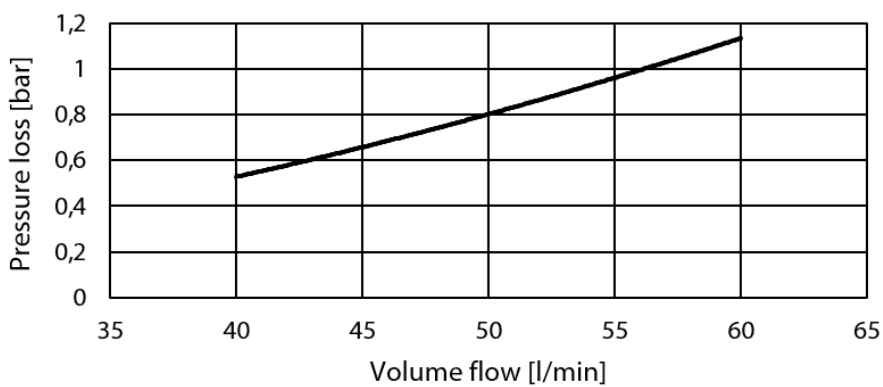
Table 6 Pin configuration of bearing temperature sensor connector (one two-wire PT100 sensor) in D-end

## ALLOWED ALTITUDES VS PHASE CABLE LENGTH



Picture 1 Allowed altitudes vs phase cable length

## PRESSURE LOSS VS COOLANT FLOW



Picture 2 Pressure loss vs coolant flow (+25°C coolant)

Mounting				Shaft				IEC60034-7	
Horizontal	Foot	Side	Flange	D-end	Dual-end	Spline	Cylindrical	Code I	Code II
	<input checked="" type="checkbox"/>		<input checked="" type="checkbox"/>	<input checked="" type="checkbox"/>				B35	IM2001
		<input checked="" type="checkbox"/>	<input checked="" type="checkbox"/>	<input checked="" type="checkbox"/>				B25	IM2401
	<input checked="" type="checkbox"/>		<input checked="" type="checkbox"/>	<input checked="" type="checkbox"/>			<input checked="" type="checkbox"/>	B35	IM2001
		<input checked="" type="checkbox"/>	<input checked="" type="checkbox"/>	<input checked="" type="checkbox"/>			<input checked="" type="checkbox"/>	B25	IM2401
		<input checked="" type="checkbox"/>		<input checked="" type="checkbox"/>				B20	IM1101
	<input checked="" type="checkbox"/>			<input checked="" type="checkbox"/>				B3	IM1001
		<input checked="" type="checkbox"/>		<input checked="" type="checkbox"/>			<input checked="" type="checkbox"/>	B20	IM1101
	<input checked="" type="checkbox"/>			<input checked="" type="checkbox"/>			<input checked="" type="checkbox"/>	B3	IM1001

Table 7 Mounting method

## MOTORS

Type	Coolant temperature +65°C			Coolant temperature +40°C			Coolant temperature +40 / +65°C			
	Cont. Torque [Nm]	Cont. Power [kW]	Nom. Current [A]	Cont. Torque [Nm]	Cont. Power [kW]	Nom. Current [A]	Nom. speed [rpm]	Max. speed [rpm]	Peak torque DUAL (a)	Peak torque QUAD (b)
EM-PMI540B-T4000-600	4522	284	387	5454	342	463	600	1200	5930	5930
EM-PMI540B-T4000-1200	4229	531	716	4692	590	790	1200	2400	4158	5930
EM-PMI540B-T4000-1600	4183	701	954	4639	777	1058	1600	3200	3062	5930
EM-PMI540B-T4000-2400	3565	896	1232	4067	1022	1422	2400	4000 (c)	-	4000

(a) Peak torque achieved with two 350A inverters

(b) Peak torque achieved with four 350A inverters

(c) Mechanical maximum speed

The maximum allowed peak torque duration at stator winding starting temperature +90°C is 10.5 minutes. The given values indicate typical duration and are not verified. In case more accurate values are required, cyclic dimensions are needed.

## GENERATORS

Type	Coolant temperature +65°C				Coolant temperature +40°C				Coolant temperature +40 / +65°C		
	Apparent power [kVA]	Cont. power [kW]	Nom. Current [A]	Power factor	Apparent power [kVA]	Cont. Power [kW]	Nom. Current [A]	Power factor	Nom. speed [rpm]	Nom. Freq. [Hz]	Volt/ speed ratio [V <sub>AC</sub> /rpm] (d)
EM-PMI540B-T4000-600	340	336	388	0.99	408	397	464	0.97	800	107	0.816
EM-PMI540B-T4000-1200	609	589	705	0.97	674	648	779	0.96	1400	187	0.416
EM-PMI540B-T4000-1600	809	759	942	0.94	896	831	1040	0.93	1800	240	0.290
EM-PMI540B-T4000-2400	984	911	1185	0.92	1074	1024	1308	0.95	2500	333	0.193

(d) Back EMF for cold (+20°C) generator

## PRODUCT CODE AND OPTIONS

Use product code including all needed options for ordering. Standard options are not given with the code as they are selected by default if a non-standard option is not selected. Standard options are indicated by a star (\*).

Product code	Description
EM-PMI540B-T4000-1600-DUAL	Standard 1600 rpm unit with standard options
EM-PMI540B-T4000-1600-DUAL+BIA+RES1	Standard unit otherwise but with isolated bearings and resolver

Table 8 Product code examples

Variant	Code	Description	Additional information
High voltage connections	-DUAL (***)	Two galvanically isolated three-phase systems	1 x M32 cable gland per phase, total of 6 pcs M32 cable glands
	-QUAD	Four galvanically isolated three-phase systems	1 x M32 cable gland per phase, total of 12 pcs M32 cable glands
Low voltage connections (signal and auxiliaries)	*	Low voltage connections done with connector	See Connections – section of the data sheet
	+LVB1	Low voltage connections done with connection box and terminal strip	D-end: LV connection box with 1 x M16 cable gland + terminal strips N-end: LV connection box with 1 x M25, 2 x M16 and 1 x M12 cable glands + terminal strips (see user guide for pinout)
D-end shaft	*	Male shaft, cylindrical	Cylindrical shaft, diameter 70 mm h7
	+S3	Male shaft, spline	DIN 5480 W70x2x30x34x8f
N-end attachment	*	None	
	+NE4 (***)	Male shaft, no flange	Cylindrical shaft, diameter 70 mm h7 (standard) DIN 5480 W70x2x30x34x8f (+S3)
Foot mounting	*	None	
	+FM1	Foot	Foot mounting, shaft height 315 mm
Bearing insulation	*	Non-insulated bearings	Non-insulated bearings
	+BIN	Insulated bearing in N-end	Insulated bearing in N-end
	+BIA	Insulated bearing in both ends	Insulated bearing in both ends
Shaft grounding	*	None	
	+SG1	D-end shaft grounding	Inbuilt grounding ring
Rotation sensor	*	None	No resolver
	+RES1	Resolver	Inbuilt non-contacting resolver, 8-pole pair
	+RES2	Double resolver	Inbuilt non-contacting resolver, 8-pole pair
Winding temperature sensors	*	Temperature surveillance	DUAL: 6 x PT100 (two-wire) in windings QUAD: 12 x PT100 (two-wire) in windings
	+TEMP5	Redundant temperature surveillance	DUAL: 12 x PT100 (two-wire) in windings QUAD: 24 x PT100 (two-wire) in windings
Bearing temperature sensors	*	None	
	+BTMP1	PT100 in bearings	Plugin connector
Anti-condensation heaters	*	None	
	+HEAT2	Two anti-condensation heaters	2 x 230 V <sub>AC</sub> / 130 W (see user guide for more information)
Machine coating	*	None	
	+C5	High corrosion category	Dark grey RAL7024 Type of coating: Epoxy Minimum number of coats (MNOC): 2 Minimum nominal dry film thickness: 240 µm
Marine classification	*	No marine classification	
	+CL1		ABS American Bureau of Shipping
	+CL2		BV Bureau Veritas
	+CL3		DNV
	+CL4		LR Lloyd's Register
	+CL5		RINA
	+CL6		CCS China Classification Society

(\* Standard option) (\*\*\*) Option not currently launched. Available on request.

Table 9 Option list

Danfoss can accept no responsibility for possible errors in catalogues, brochures and other printed material. Danfoss reserves the right to alter its products without notice. This also applies to products already on order provided that such alterations can be made without changes being necessary in specifications already agreed. All trademarks in this material are property of the respective companies. Danfoss and the Danfoss logotype are trademarks of Danfoss A/S. All rights reserved.