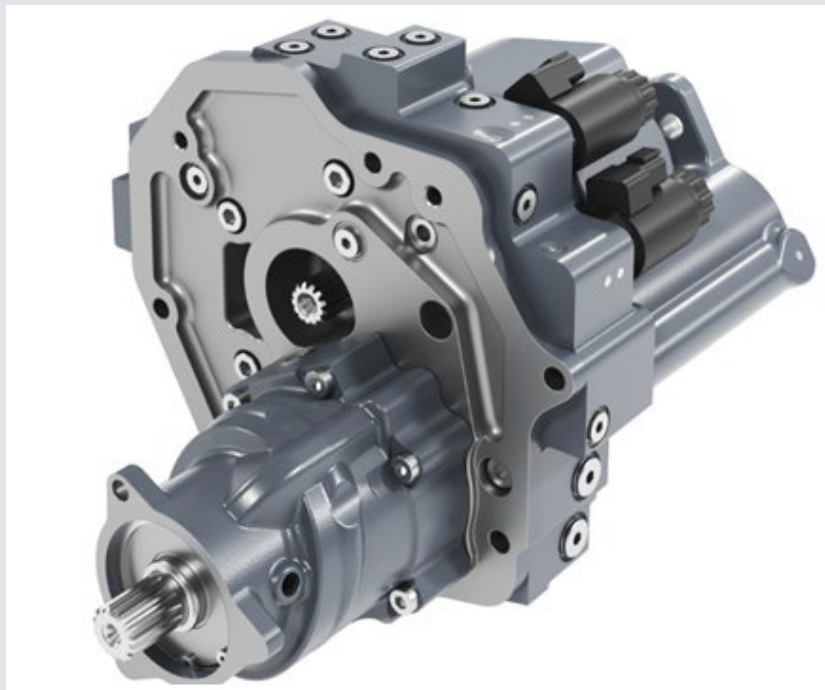




CUT transmission 5144



Revision history

Date	Changed	Rev
July2025	Part manual release	001

Contents

General Information

Service parts identification.....	5
Nameplate.....	5
Date code.....	6
About service bulletins.....	6
Procedure to identify a part.....	6
Adobe Acrobat 2-page viewing.....	7
Order code.....	8

CUT Transmission

Pump.....	9
Motor.....	10

Displacement

Cylinder Block Kit Pump.....	11
Cylinder Block Kit Motor.....	12

Control

NFPE.....	13
-----------	----

Center-Section

Metric Port.....	14
------------------	----

Connector

Deutsch DT2 Pin.....	15
Amp Jr 2 Pin.....	16

Shaft

Pump Shaft/PTO.....	17
Motor Shaft.....	18

System Protection

High Pressure Relief valve.....	20
Charge Pressure Relief valve.....	21

Special Hardware Feature

Special Features.....	22
-----------------------	----

General information

Service parts identification

The following information and procedure are used to identify the module group, item number, manufacture date, part number, and part name of the parts included. The parts listed include all parts which may be used when performing either “Minor Repairs”, or “Major Repairs” on the CUT transmission.

Nameplate

Each unit will have a nameplate affixed to the housing. The nameplate of the CUT 5143 will include the following information:

Model code

The Danfoss model code completely defines the specific unit and must be used when ordering parts to service this product.

Model/material number

The Danfoss model number (also known as material number) is used by the factory in manufacturing. On repeat orders, a complete unit can be ordered by the model number.

Serial number

The Danfoss serial number is used to identify the manufacture date and the unit sequence in the build. The serial number is also used to identify the unit’s warranty period.

The letter code indicates the location of the original manufacture (assembly).

The first number (2 digits) indicates the year of manufacture. The second number (2 digits) indicates the calendar week of manufacture.

The third number (5 digits) is a sequential number used to identify a specific unit.



General information

Date code

The date code is defined as the year and week of manufacture. The same item number may list more than one part number. This indicates that there is more than one configuration for that item number. You will see that there are different date codes for the different part numbers. Find the date code of your unit from the nameplate to determine which service part number you need to order.

Example: The service part desired is item G30

Order Code	Item	Date Begin	Date End	Part Number	Part Name	Qty. per Model/Kit
80	G30	89-17		8000243	End cap gasket	1
	G30		89-16	8000151	End cap gasket (SB-1995-006)	1

About service bulletins

A Service Bulletin Number (SB- _____) may follow the "Part Name" of the part you desire. You must read that Service Bulletin prior to ordering that part. The information contained in these Service Bulletins, as of the print date of this bulletin, are included at the end of this manual. Service Bulletins contain more detailed information such as interchangeability, what additional parts are involved, etc. It is suggested that you add additional Service Bulletins to this manual as you receive them.

Procedure to identify a part

The modular design of this product results in a simplified service parts list and part number identification procedure.

The same item numbers are used for the same part names on all units within a product type. A part number that has another number following it in parentheses is done to make this a worldwide manual.

Regional part numbers

Some part numbers are region specific and should be ordered accordingly.

As an example, the part number (example: 314583 (9008000-0118)) will be used. The first number is sold in Germany. The number in parentheses is sold in the United States. Customers would order

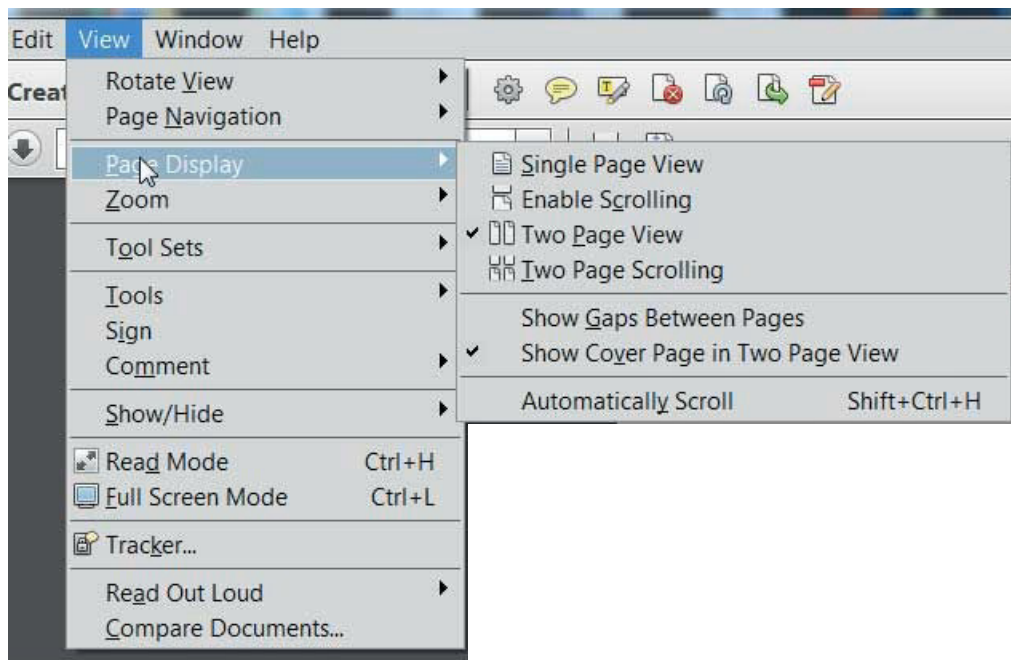
9008000-0118 if ordering the part in the United States.

General information

Adobe Acrobat 2-page viewing

While viewing manual in Adobe Acrobat, the following settings need to be applied to ensure proper page display.

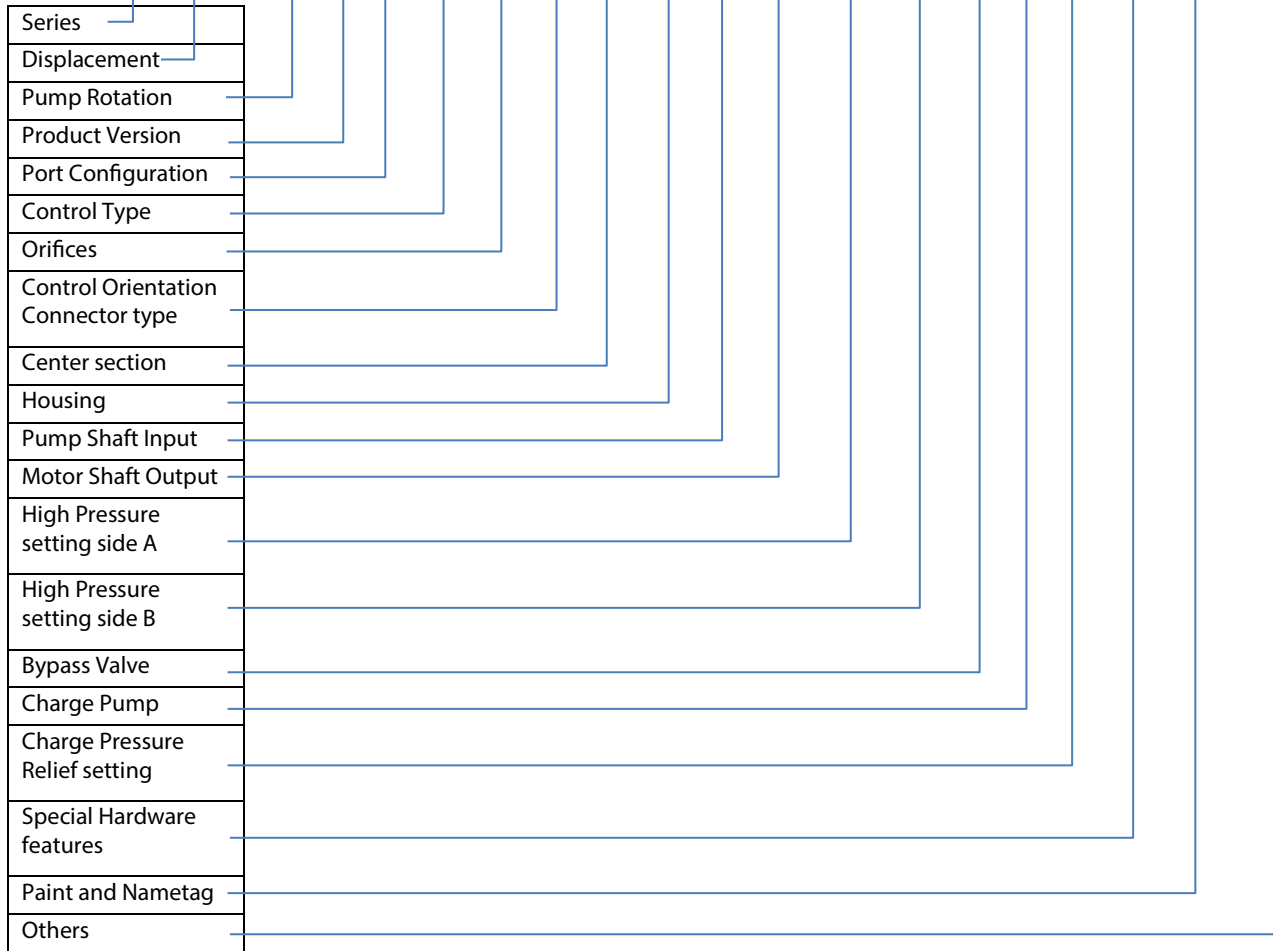
1. Select "View" → "Page Display" → "Two Page View"
2. Select "View" → "Page Display" → "Show Cover Page in Two Page View"



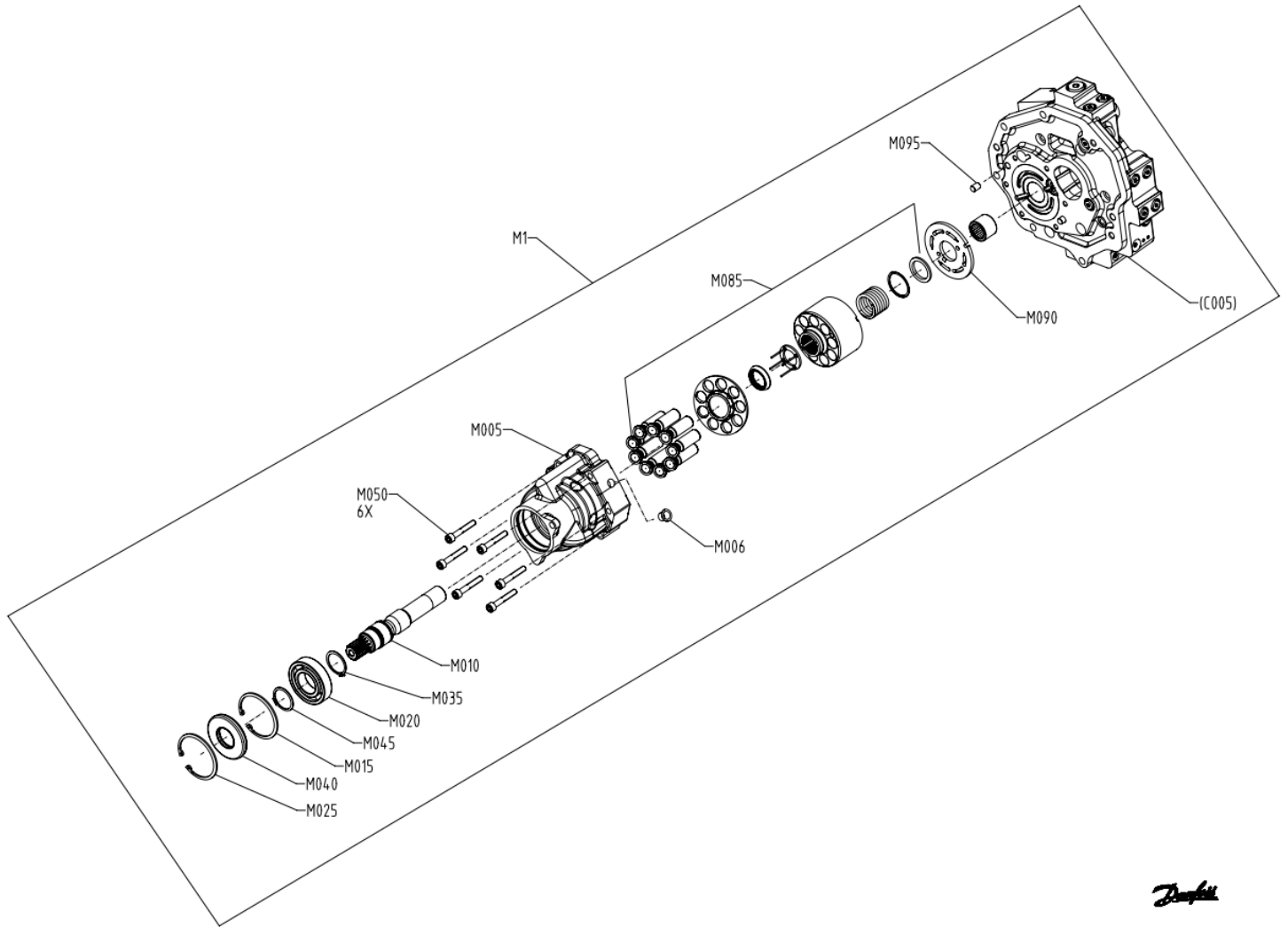
CUT Transmission 5144

Model Code

SERIES	C	A	B	Z	D	F	E	G	H	J	K	M	N	P	S	V	W	X	Y
MDT	5144	R	A	A	NF	NN	A	AA	N	AE	AM	38N	38N	N	N	18	NA	NNN	NNN

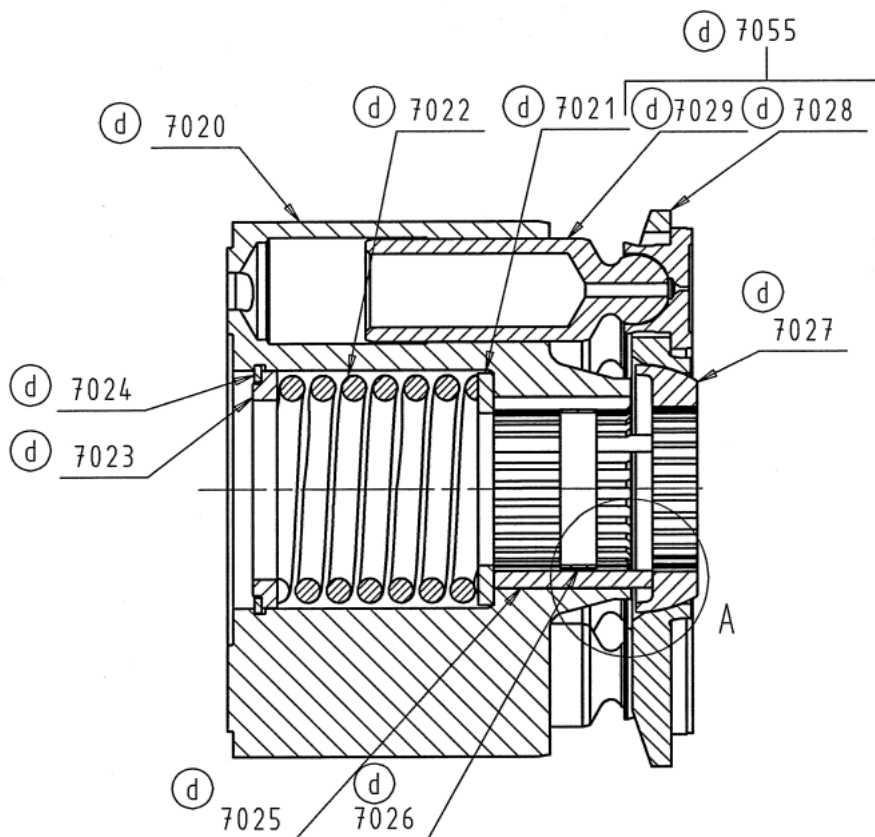


Motor -



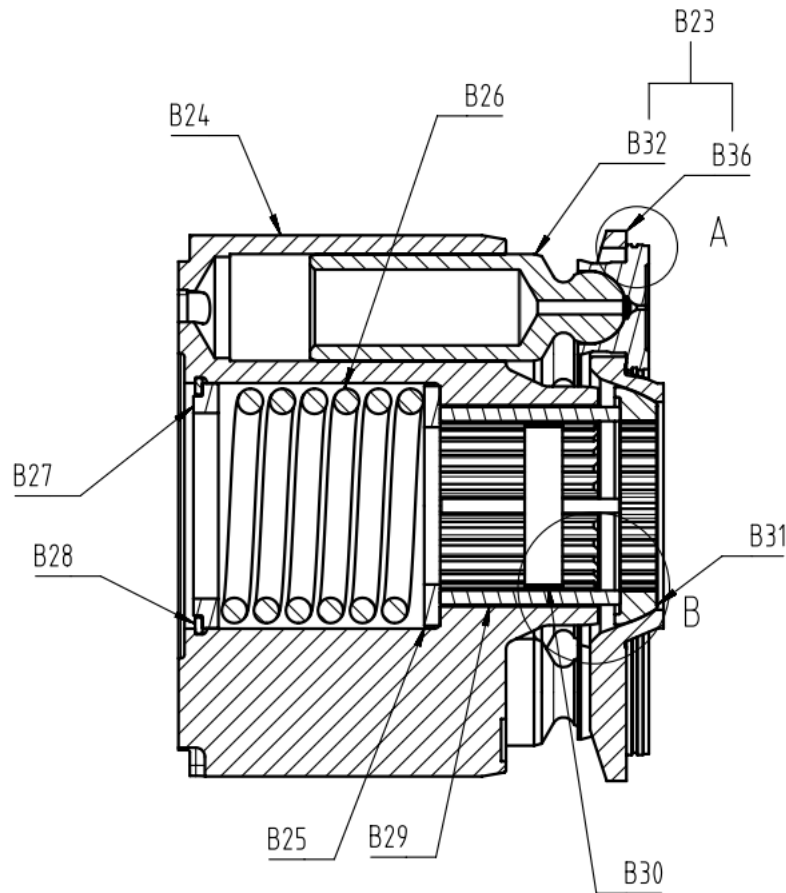
Item	Date Begin	Date End	Part Number	Part Name	Qty. Per Model/Kit
M1			11343684	MOTOR ASSEMBLY	1
M005			11337917	HOUSING-MOTOR	1
M006			5000711	PLUG-PLASTIC, TAPERED 0.547x0.500	1
M010			1200436	SHAFT-MOTOR FIXED 15T	1
M015			9006200-0281	RING-RTNG, INT 2.812x0.093 BASIC	1
M020			5000731	BEARING-BALL, 35 X 72 X 17	1
M025			9006200-0281	RING-RTNG, INT 2.812x0.093 BASIC	1
M035			9006300-0137	RING-RTNG, EXT 1.375x0.050 BASIC	1
M040			9008000-0121	SEAL-LIP, 1.300 SFT X 2.848 HSG X .375	1
M045			9006300-0137	RING-RTNG, EXT 1.375x0.050 BASIC	1
M050			9007314-0811	SCREW-SOC, ISO4762 M8x50 12.9	6
M085			4440232	CYLINDER BLOCK KIT - 43.5 CC, 97% BAL.	1
M090			4350754	PLATE-MOTOR VALVE	1
M095			9004800-3708	PIN-STRAIGHT, ASMEB1882 0.3753x0.500	2

Cylinder Block Kit - Pump 51cc



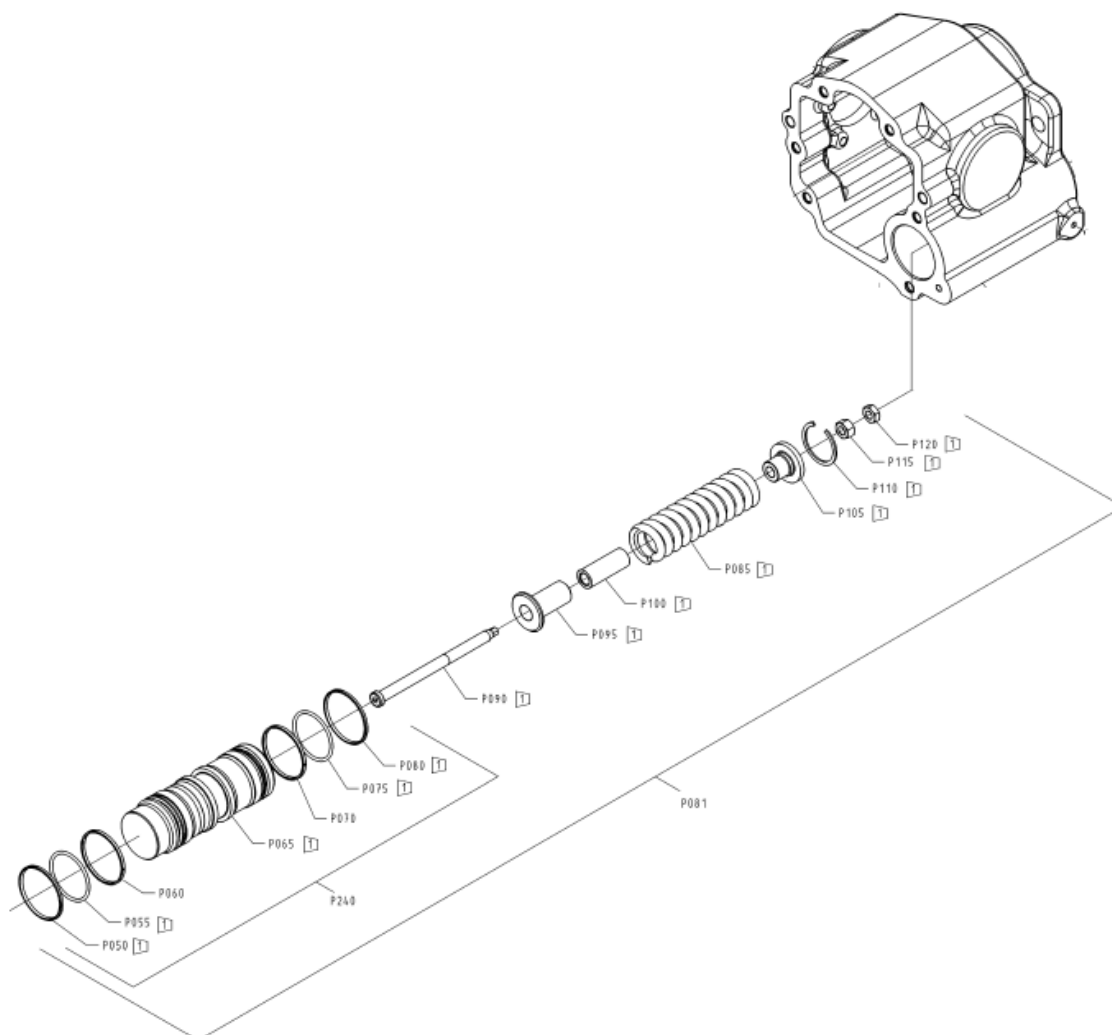
Item	Date Begin	Date End	Part Number	Part Name	Qty. Per Model/Kit
P180			4520004	CYLINDER BLOCK KIT-51CC W/O SPD RING	1
7055			11079528	ASSY-RETAINED PISTON, 43.5CC	1
7020			4520003	CYLINDER BLOCK-51CC	1
7021			4350012	WASHER	1
7022			4350172	SPRING-CYL BLOCK	1
7023			9009625-0105	WASHER-1.228 X 1.619 X .165 SPCL	1
7024			9006250-0162	RING-RTNG, INT 1.625x0.049 SPIRAL	1
7025			4700091	PIN-SLIPPER HOLD DOWN	1
7026			4350048	RETAINER-HOLD DOWN PIN	1
7027			11175544	GUIDE-SLIPPER RETAINER	1

Cylinder Block Kit - Motor 44cc



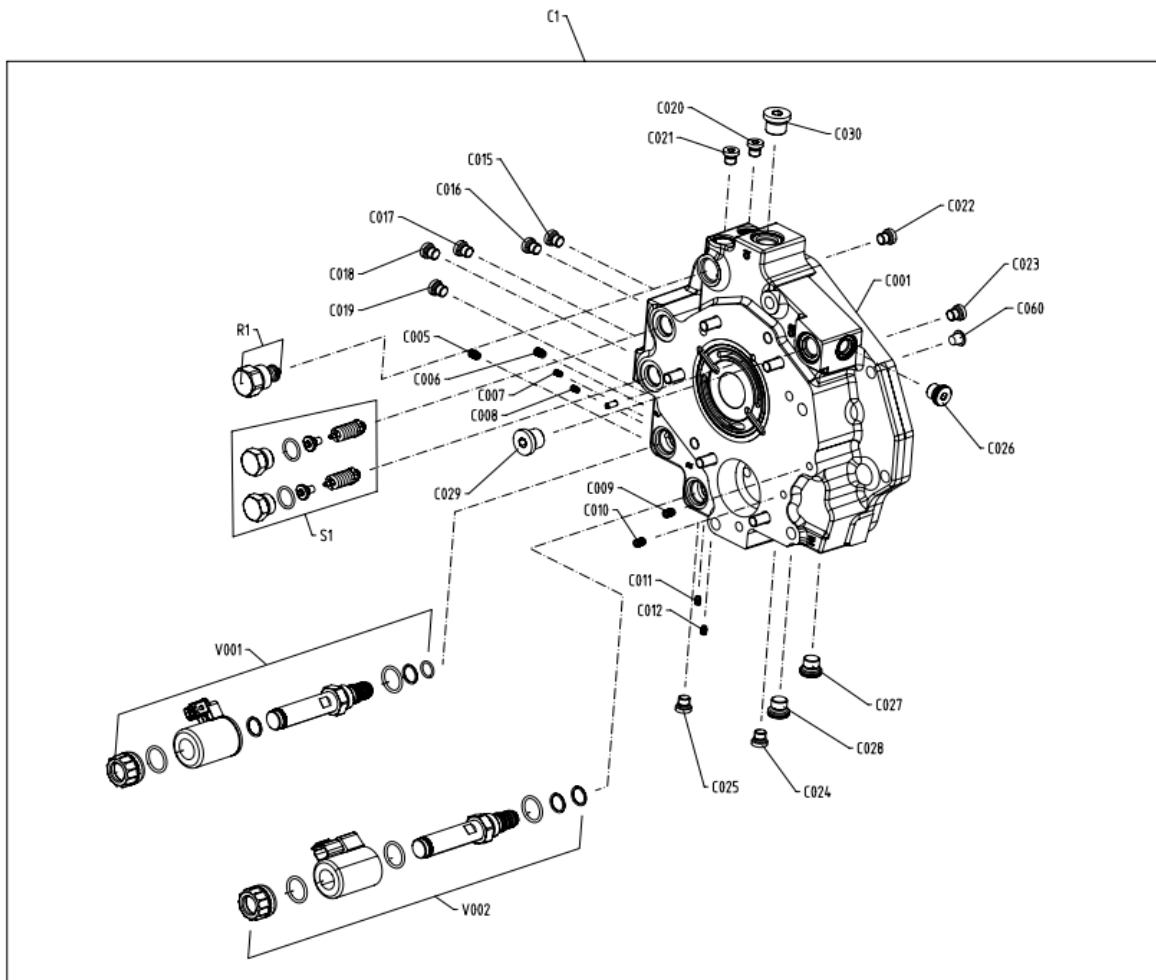
Item	Date Begin	Date End	Part Number	Part Name	Qty. Per Model/Kit
M085			4440232	Motor CYLINDER BLOCK KIT - 43.5 CC,	1
B23			11071351	ASSY-RETAINED PISTON M44 97% BALANCE	1
B24			11121916	BLOCK CYLINDER PM FINISH	1
B25			4350012	WASHER	1
B26			4350172	SPRING-CYL BLOCK	1
B27			9009625-0105	WASHER-1.228 X 1.619 X .165 SPCL	1
B28			9006250-0162	RING-RTNG, INT 1.625x0.049 SPIRAL	1
B29			11178524	PIN-SLIPPER HOLD DOWN	1
B30			4350048	RETAINER-HOLD DOWN PIN	1
B31			11178522	GUIDE-SLIPPER RETAINER	1

NFPE -



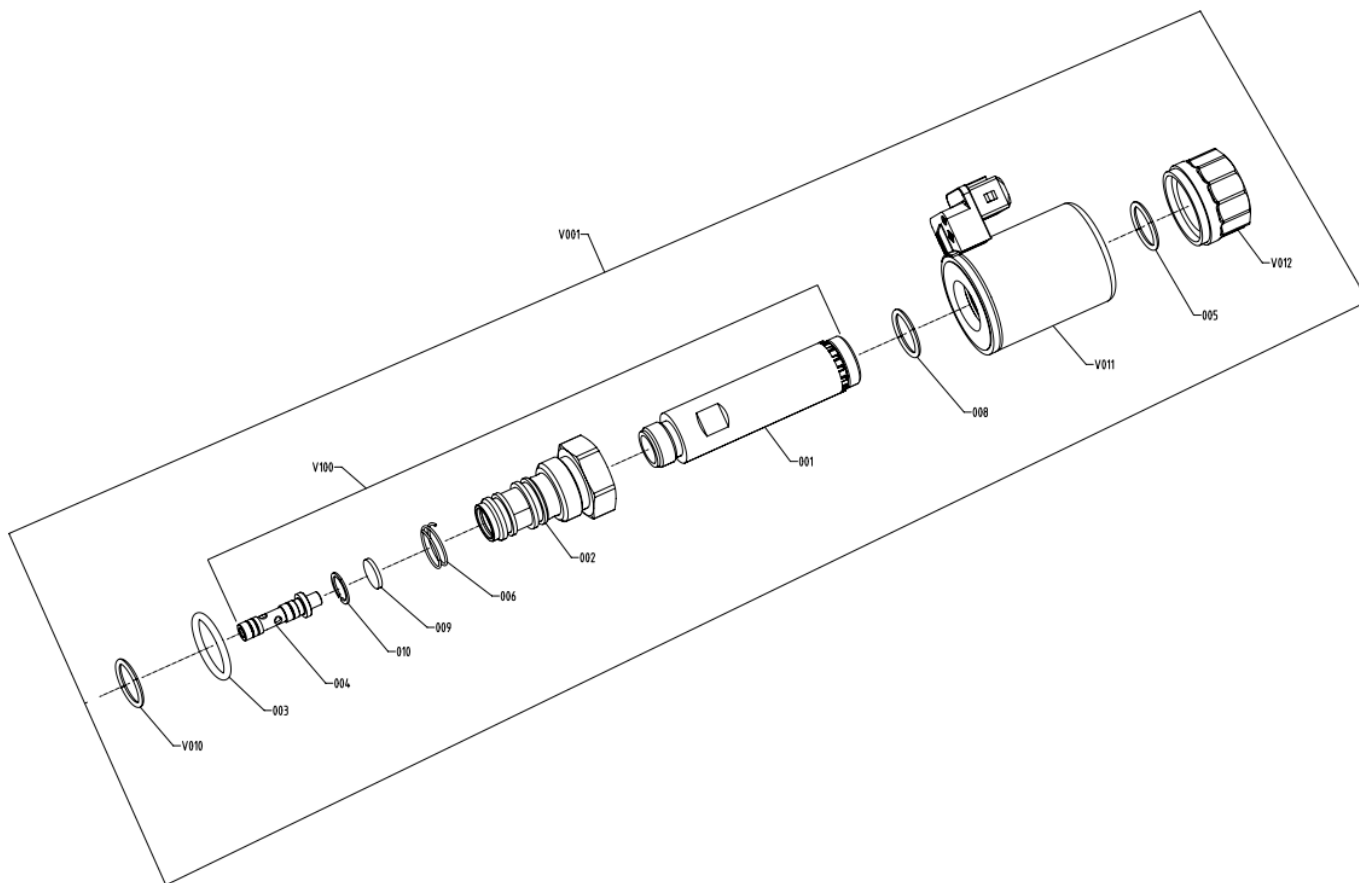
Item	Date Begin	Date End	Part Number	Part Name	Qty. Per Model/Kit
P050			8700067	RING-PISTON	1
P055			9004100-1310	O-RING, HMS151 1.674x0.103 N-NBR70	1
P060			4460648	BEARING RING	1
P065			1200347	PISTON-SERVO	1
P070			4460648	BEARING RING	1
P075			9004100-1310	O-RING, HMS151 1.674x0.103 N-NBR70	1
P080			8700067	RING-PISTON	1
P240			11052756	SERVO-CYLINDER SEAL ASSEMBLY	1
P085			8700067	RING-PISTON	1
P090			4461033	SCREW-SERVO	1
P095			1200280	GUIDE-SPRING, CLOSED END	1
P100			1200279	STOP-SERVO	1
P105			4280108	SEAT-SPRING,NFP	1
P110			5000170	RING-RTNG, INT 1.500 HSG ID X .062	1
P115			9003535-3700	NUT-HEX, ANSIB18.2.2 0.375-24 UNF	1
P120			5000480	NUT-HEX JAM, .375 -24	1

Center Section –



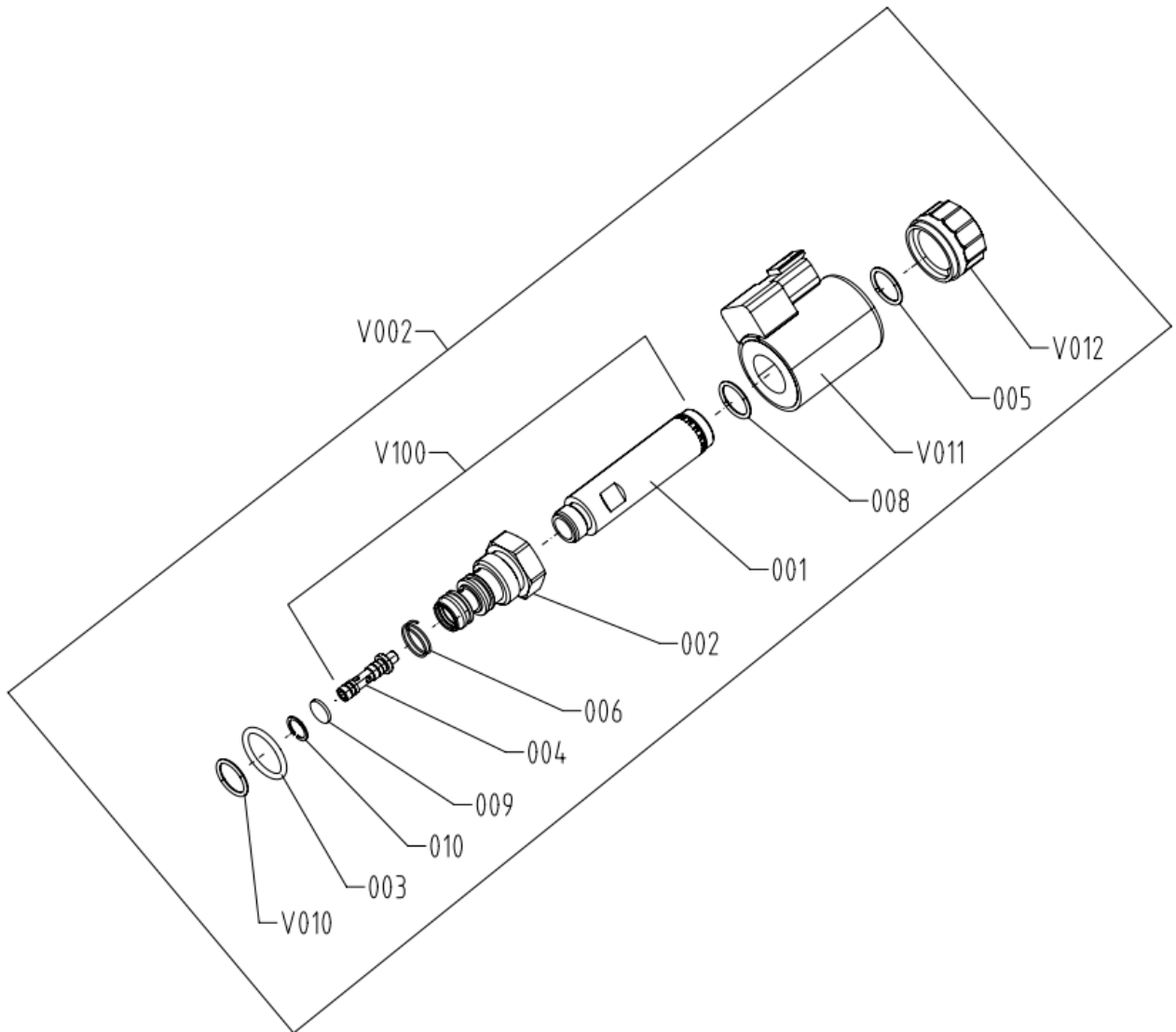
Item	Date Begin	Date End	Part Number	Part Name	Qty. Per Model/Kit
C1			11043634	CENTERSECTION ASSEMBLY	1
C001			11056809	CENTERSECTION-S20	1
C003			9001465-0015	BEARING-NEEDLE, 1.000 X 1.3125 X 1.000	1
C004			9001465-0015	BEARING-NEEDLE, 1.000 X 1.3125 X 1.000	1
C005			5000565	PLUG-EXPANSION, MANDREL (SK 550-050)	1
C006			5000565	PLUG-EXPANSION, MANDREL (SK 550-050)	1
C007			5000565	PLUG-EXPANSION, MANDREL (SK 550-050)	1
C008			5000565	PLUG-EXPANSION, MANDREL (SK 550-050)	1
C009			5000586	PLUG-EXPANSION, MANDREL (SK 550-070)	1
C010			5000586	PLUG-EXPANSION, MANDREL (SK 550-070)	1
C011			5000586	PLUG-EXPANSION, MANDREL (SK 550-070)	1
C012			5000586	PLUG-EXPANSION, MANDREL (SK 550-070)	1
C013			9004700-1907	PIN-SLT TD SPRG,ANSIB18.8.2 0.1875x0.4375	1
C014			9004700-1907	PIN-SLT TD SPRG,ANSIB18.8.2 0.1875x0.4375	1
C015			5000571	PLUG ASSY-SOC,ISO6149 M10x1.0 NBR90 5.8	1
C016			5000571	PLUG ASSY-SOC,ISO6149 M10x1.0 NBR90 5.8	1
C017			5000571	PLUG ASSY-SOC,ISO6149 M10x1.0 NBR90 5.8	1
C018			5000571	PLUG ASSY-SOC,ISO6149 M10x1.0 NBR90 5.8	1
C019			5000571	PLUG ASSY-SOC,ISO6149 M10x1.0 NBR90 5.8	1
C020			5000571	PLUG ASSY-SOC,ISO6149 M10x1.0 NBR90 5.8	1
C021			5000571	PLUG ASSY-SOC,ISO6149 M10x1.0 NBR90 5.8	1
C022			5000571	PLUG ASSY-SOC,ISO6149 M10x1.0 NBR90 5.8	1
C023			5000571	PLUG ASSY-SOC,ISO6149 M10x1.0 NBR90 5.8	1
C024			5000571	PLUG ASSY-SOC,ISO6149 M10x1.0 NBR90 5.8	1
C025			5000571	PLUG ASSY-SOC,ISO6149 M10x1.0 NBR90 5.8	1
C026			5000438	PLUG ASSY-SOC,ISO6149 M14x1.5 NBR90 5.8	1
C027			5000438	PLUG ASSY-SOC,ISO6149 M14x1.5 NBR90 5.8	1
C028			5000438	PLUG ASSY-SOC,ISO6149 M14x1.5 NBR90 5.8	1
C029			5000570	PLUG ASSY-SOC,ISO6149 M18x1.5 NBR90 5.8	1
C030			5000570	PLUG ASSY-SOC,ISO6149 M18x1.5 NBR90 5.8	1
C060			5000649	PLUG-PLASTIC, TAPERED 0.398x0.375	1

Deutsch DT2 Pin



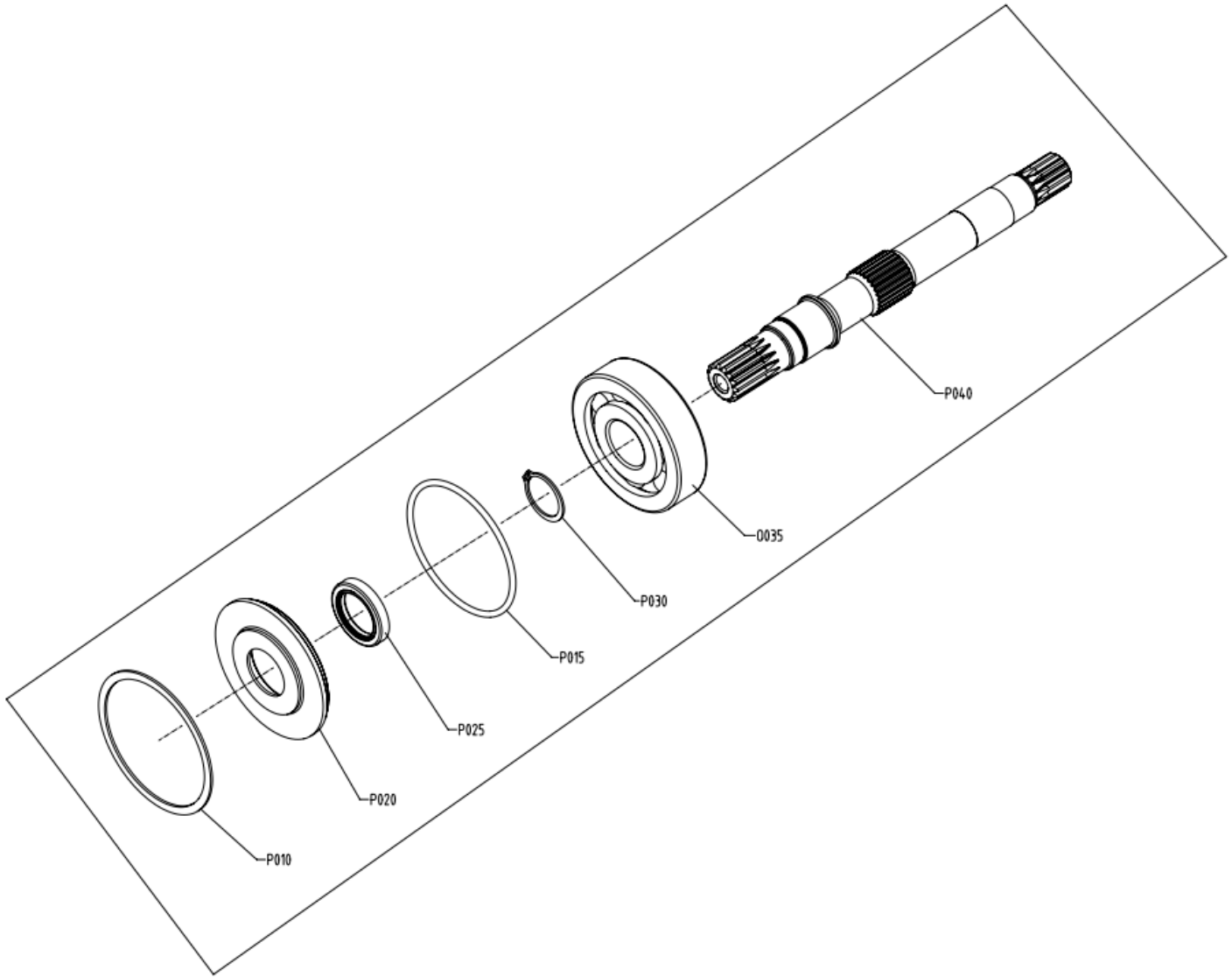
Item	Date Begin	Date End	Part Number	Part Name	Qty. Per Model/Kit
V001			11353164	CONTROL ASSEMBLY	1
V100			11046652	ACTUATOR ASSY, PROP. CP550-A15	1
002			11014674	SLEEVE HONED CP550-A15, CABURIZED	1
004			11018213	SPOOL, CP550-A15	1
001			170016419	ACTUATOR, M19	1
010			320406	RETAINING RING, N5000-43	1
009			322338	SCREEN, CP550-A11	1
007			322339	SCREEN, CP550-A11	1
003			9004202-6200	O-RING, HMS151 0.755x0.097 N-FKM90	1
005			9004105-0150	O-RING, HMS151 0.551x0.070 N-FKM90	1
008			9004105-0140	O-RING, HMS151 0.489x0.070 N-FKM90	1
006			H520831	SPRING	1
V010			9004201-6200	O-RING, HMS151 0.755x0.097 N-NBR90	1
V011			171147519	COIL, M19P-12D-1.8A-DE	1
V012			173802114	MSM 037 COIL NUT	1

AMP JR



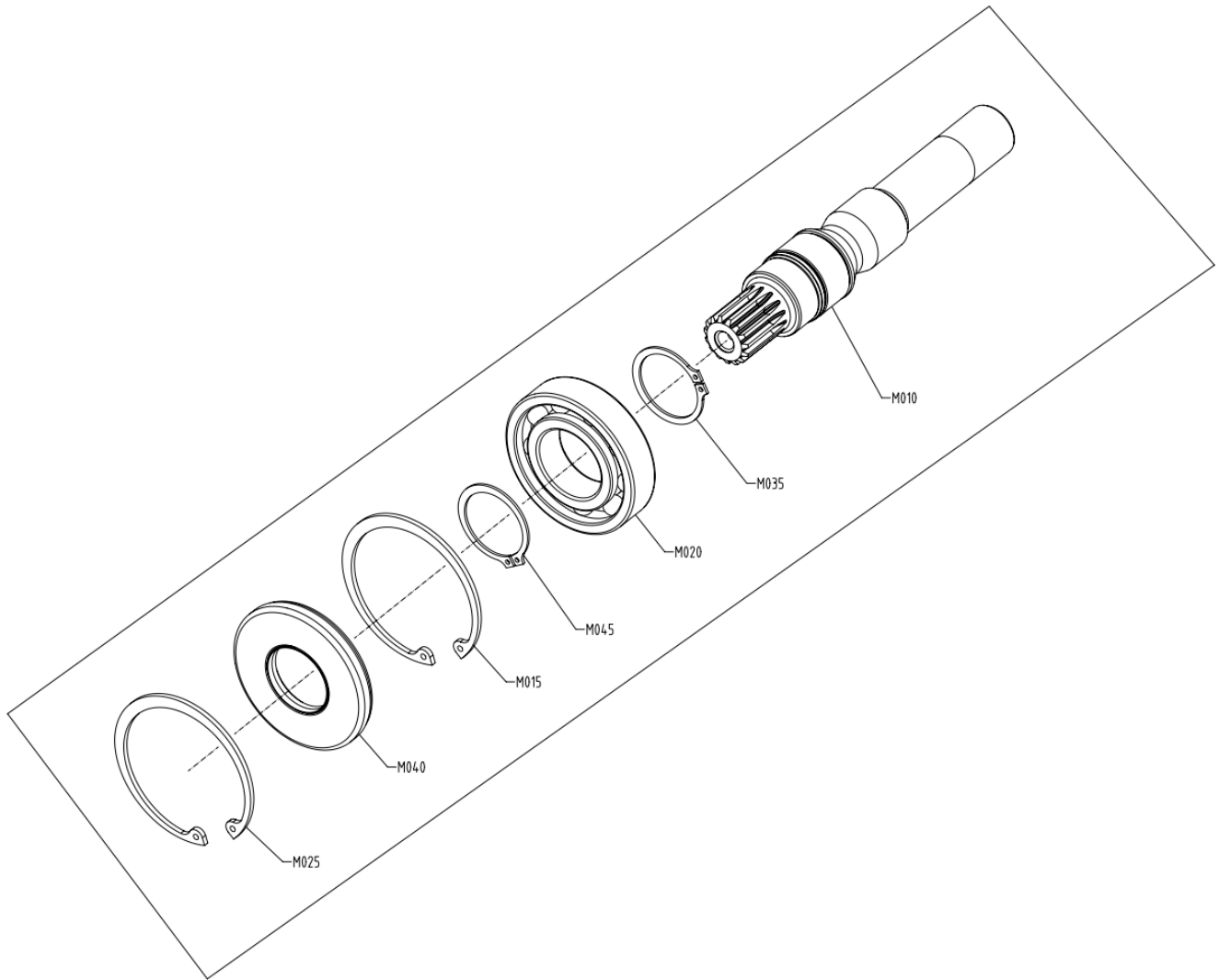
Item	Date Begin	Date End	Part Number	Part Name	Qty. Per Model/Kit
V002			11353165	CONTROL ASSEMBLY	1
V100			11046652	ACTUATOR ASSY, PROP. CP550-A15	1
002			11014674	SLEEVE HONED CP550-A15, CABURIZED	1
004			11018213	SPOOL, CP550-A15	1
001			170016419	ACTUATOR, M19	1
010			320406	RETAINING RING, N5000-43	1
009			322338	SCREEN, CP550-A11	1
007			322339	SCREEN, CP550-A11	1
003			9004202-6200	O-RING, HMS151 0.755x0.097 N-FKM90	1
005			9004105-0150	O-RING, HMS151 0.551x0.070 N-FKM90	1
008			9004105-0140	O-RING, HMS151 0.489x0.070 N-FKM90	1
006			H520831	SPRING	1
V010			9004201-6200	O-RING, HMS151 0.755x0.097 N-NBR90	1
V011			171147319	COIL, M19P-12D-1.8A-AJ	1
V012			173802114	MSM 037 COIL NUT	1

PUMP SHAFT -



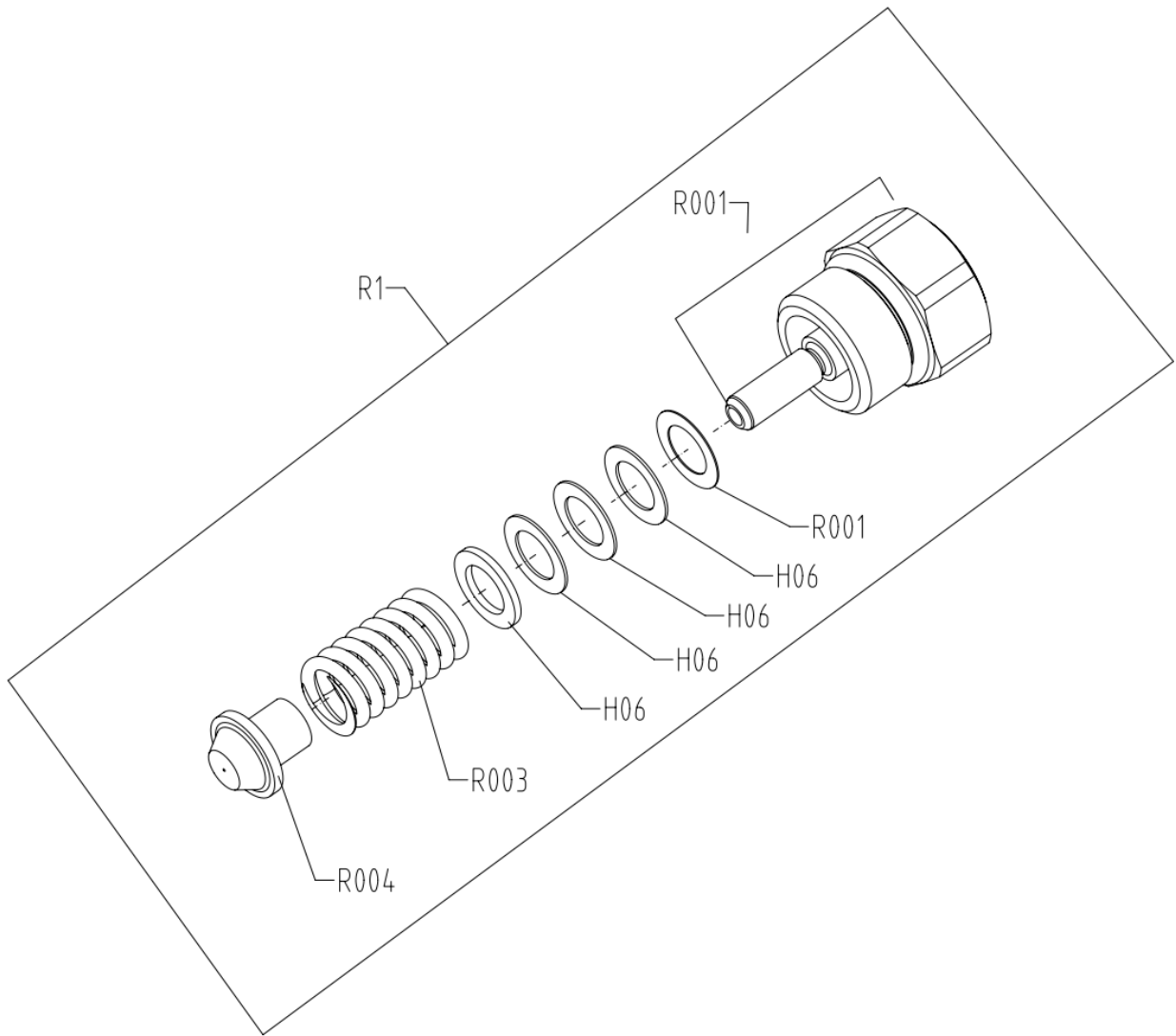
Shaft Pump					
Item	Date Begin	Date End	Part Number	Part Name	Qty. Per Model/Kit
P040			1200421	SHAFT-PUMP 15T	1

MOTOR SHAFT -



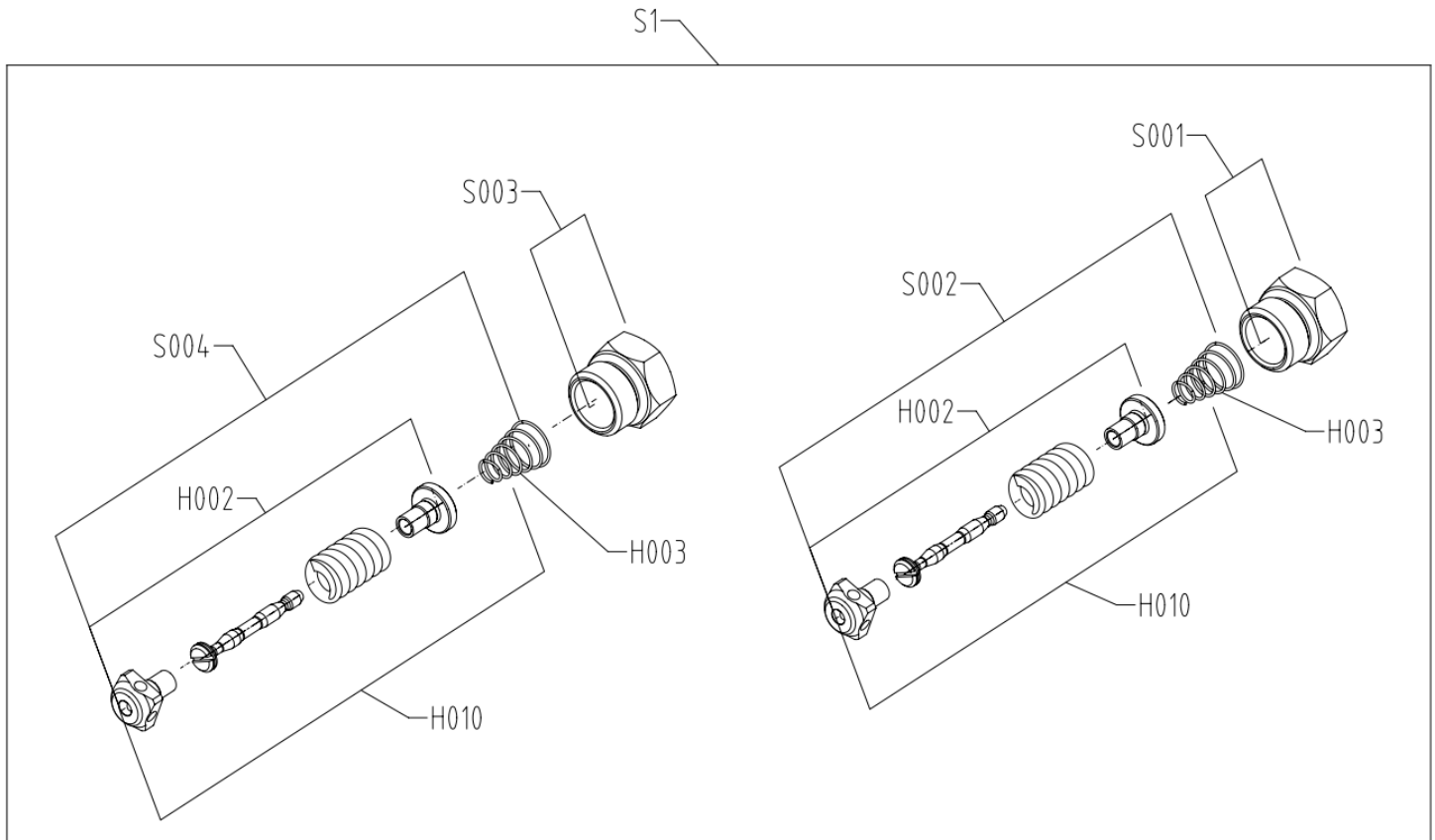
Item	Date Begin	Date End	Part Number	Part Name	Qty. Per Model/Kit
M010			1200436	SHAFT-MOTOR FIXED 15T	1

High Pressure Relief Valve -



Item	Date Begin	Date End	Part Number	Part Name	Qty. Per Model/Kit
R1			1200388	VALVE ASSEMBLY-CHARGE RELIEF	1
R001			4800308	PLUG-ASSY CHARGE RELIEF	1
R002			4800135	SHIM-CHG. RELIEF	1
H06			4800135-0020	SHIM-CHG.RELIEF	1
H06			4800135-0050	SHIM-CHG.RELIEF	1
H06			4800135-0010	SHIM-CHG.RELIEF	1
H06			4800135-0040	SHIM-CHG.RELIEF	1
R003			4800176	SPRING-HELICAL COMPRESSION	1
R004			1200359	CPRV POPPET	1

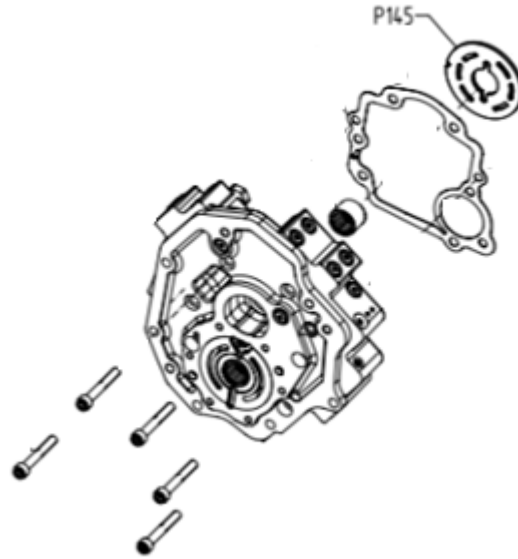
Charge Pressure Relief Valve –



Item	Date Begin	Date End	Part Number	Part Name	Qty. Per Model/Kit
S1			1200390	SCR VALVE ASSEMBLY	1
S001			1200296	PLUG ASSEMBLY	1
S002			4800327	VALVE-SCR ASSY, 385 BAR/5580 PSI	1
H002			3103375-0385	VALVE ASSY-SCR, 385BAR/5580PSI	1
H003			4800780	SPRING-COMPRESSION, CONICAL	1
H010			4800289 ZSD 000 A	VALVE-DRAWING,SCR	1
S003			1200296	PLUG ASSEMBLY	1
S004			4800327	VALVE-SCR ASSY, 385 BAR/5580 PSI	1
H002			3103375-0385	VALVE ASSY-SCR, 385BAR/5580PSI	1
H003			4800780	SPRING-COMPRESSION, CONICAL	1
H010			4800289 ZSD 000 A	VALVE-DRAWING,SCR	1

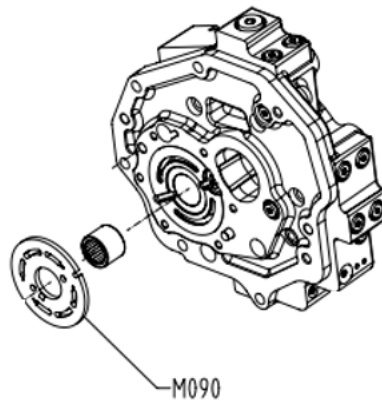
Special Hardware Feature –

Pump Valve Plate



Item	Date Begin	Date End	Part Number	Part Name	Qty. Per Model/Ki
P145			1200386	Plate Valve CW	1

Motor Valve Plate



Item	Date Begin	Date End	Part Number	Part Name	Qty. Per Model/Ki
M090			4350745	Plate Valve Motor	1



Hydro-Gear

www.hydro-gear.com

Daikin-Sauer-Danfoss

www.daikin-sauer-danfoss.com

Explore our solutions at danfoss.com.

Additional product literature is available at powersource.danfoss.com.

**Danfoss
Power Solutions (US) Company**
2800 East 13th Street
Ames, IA 50010, USA
Phone: +1 515 239 6000

**Danfoss
Power Solutions GmbH & Co. OHG**
Krokamp 35
D-24539 Neumünster, Germany
Phone: +49 4321 871 0

**Danfoss
Power Solutions ApS**
Nordborgvej 81
DK-6430 Nordborg, Denmark
Phone: +45 7488 2222

**Danfoss
Power Solutions Trading
(Shanghai) Co., Ltd.**
Building #22, No. 1000 Jin Hai Rd
Jin Qiao, Pudong New District
Shanghai, China 201206
Phone: +86 21 2080 6201

Danfoss can accept no responsibility for possible errors in catalogues, brochures and other printed material. Danfoss reserves the right to alter its products without notice. This also applies to products already on order provided that such alterations can be made without subsequent changes being necessary in specifications already agreed.
All trademarks in this material are property of the respective companies. Danfoss and the Danfoss logotype are trademarks of Danfoss A/S. All rights reserved.
