



# What was ever cool about waste?

## Cut a slice out of your energy bill with variable speed control

### Optimise display cabinet cooling with SLV compressors

# HACCP

compliance is easy

with built-in data logging that enables you to document your cold chain to the smallest detail.



# 40%

energy reduction

possible with variable speed control in supermarket and convenience store cabinets, compared to non-optimised compressors.





## SLV15CNK.2 with intelligent 220 V 50/60 Hz controller

Why settle for second best, when you can secure both high food quality and a low energy bill in a single compressor?

SLV compressors are the natural choice when you need a versatile package for a wide range of applications. Built-in to this compact, reliable and easy to install unit you can find countless features that ensure that you can make the most of your investment.

Monitor system performance with the built-in data logging function, use one, intelligent controller for ultimate control and alarm management – and many other important enhancements that place SLV compressors far ahead of optimised compressors.

The integrated design of the compressors helps reduce system costs, while adding the option to use the environmentally friendly refrigerant, R290.

Contact your local Danfoss sales office today to learn more about how you can cut costs without cutting quality.



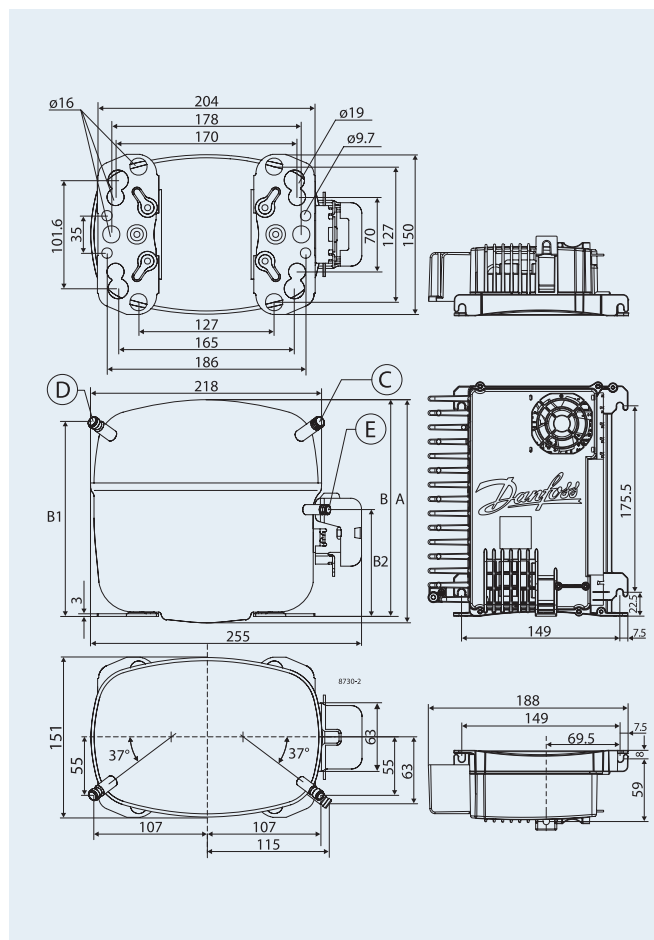
### Technical data

General (code numbers)	SLV15CNK.2
Compressor (without electronic unit)	104H8541
Electronic unit	105N4600

Application			
Application	LBP		
Frequency	Hz	50	60
Evaporating temperature	°C	-40 to -10	-40 to -10
Voltage (50/60 Hz)	V	180 - 254	180 - 254

Performance data (EN12900/CECOMAF • 220V/50 Hz • 4,000 rpm • fan cooling 3.0 m/s)				
Evaporating temperature	°C	-40	-25	-10
Cooling capacity	watt	325	792	1494
Power consumption	watt	355	583	771
Current consumption	A	1.68	2.68	3.56
COP	W/W	0.92	1.36	1.94

Dimensions			
Height	mm	A	199
		B	193
		B1	173
		B2	90
Suction connector	location/I.D. mm   angle	C	10.2   37°
	material   seal	Cu-plated steel   Al cap	
Process connector	location/I.D. mm   angle	D	6.2   37°
	material   seal	Cu-plated steel   Al cap	
Discharge connector	location/I.D. mm   angle	E	6.2   37°
	material   seal	Cu-plated steel   Al cap	
Connector tolerance	I.D. mm	±0.09	



Danfoss Household Compressors GmbH • Mads-Clausen-Str. 7 • D-24939 Flensburg / Germany • Tel: +49 (0461) 4941-0 • [compressors.danfoss.com](http://compressors.danfoss.com)

Danfoss can accept no responsibility for possible errors in catalogues, brochures and other printed material. Danfoss reserves the right to alter its products without notice. This also applies to products already on order provided that such alterations can be made without subsequent changes being necessary in specifications already agreed. All trademarks in this material are property of the respective companies. Danfoss and the Danfoss logotype are trademarks of Danfoss A/S. All rights reserved.

DEHC.PN.300.A1.02 / 520N1032

Produced by Danfoss Household Compressors and g1:advertising © Sep. 2010