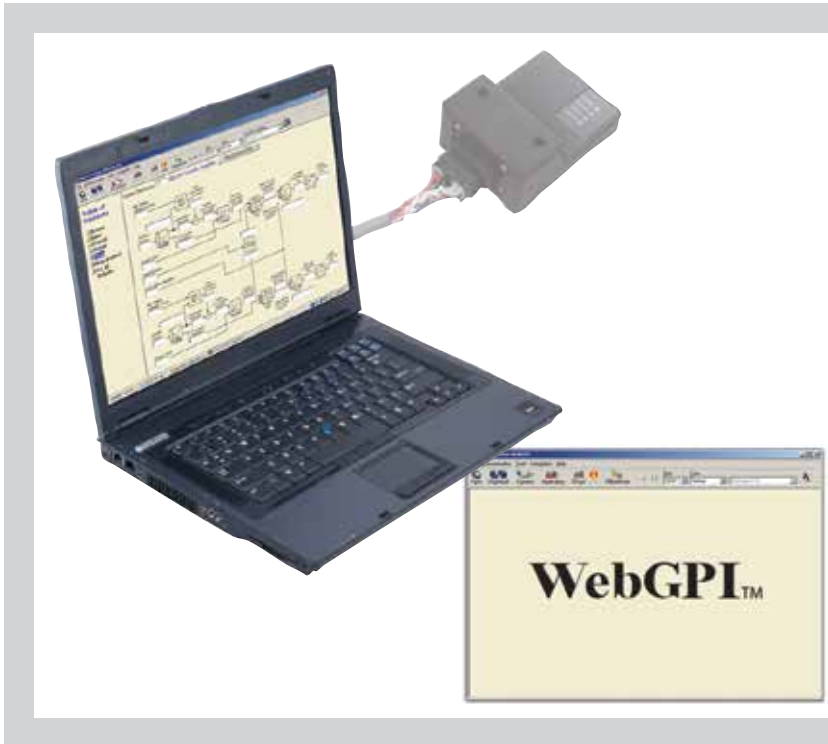




Data Sheet

# Communication Software WebGPI™



### Mobile Machine Management

Danfoss PC based WebGPI™ interface software provides serial communication to Danfoss microcontrollers containing supporting application software.

WebGPI™ utilizes Microsoft® Internet Explorer® operating environment to provide runtime controller operating data, access to application setup and tuning parameters.

When used in conjunction with a CAN based interface, support is provided for Danfoss PVED-CC actuators.

### Product Highlights

Danfoss microcontrollers supported by WebGPI™ include: SX, MC200, MC210, MC300 and MC400.

Danfoss software application support includes: Dual Path, Automotive Control, Anti-Spin, Anti-Stall, Load Control, Rear Steer, Fan Drive, Joystick Shaping, and many Leader Follower and Positioning applications.

## Features

### WebGPI™ Standard Features

- Graphic software representation
- Control parameter access
- Runtime operation data
- Controller hardware information
- Data logging
- Controller error information
- Offline application interface
- Controller application file handling

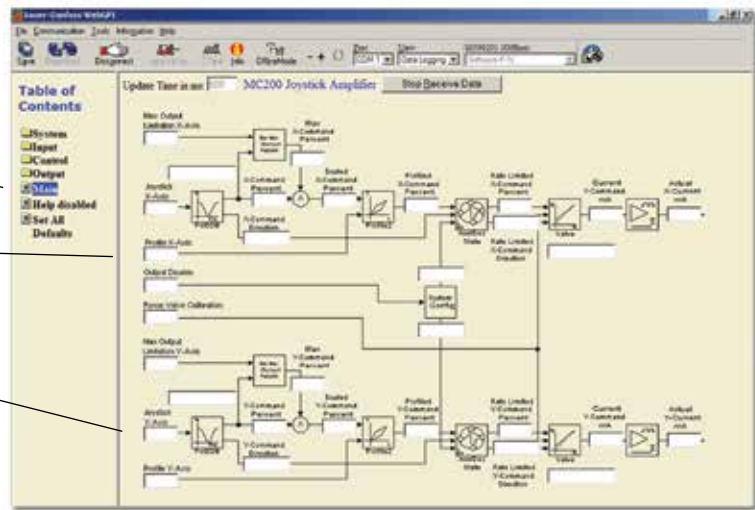
---

Purchase and activate WebGPI™  
Communication Software at:  
[www.danfoss.com](http://www.danfoss.com)

---

Main View

- WebGPI™ tool bar
- Table of Contents (choice window)
- Application main window (run screen)
- Actual application runtime data

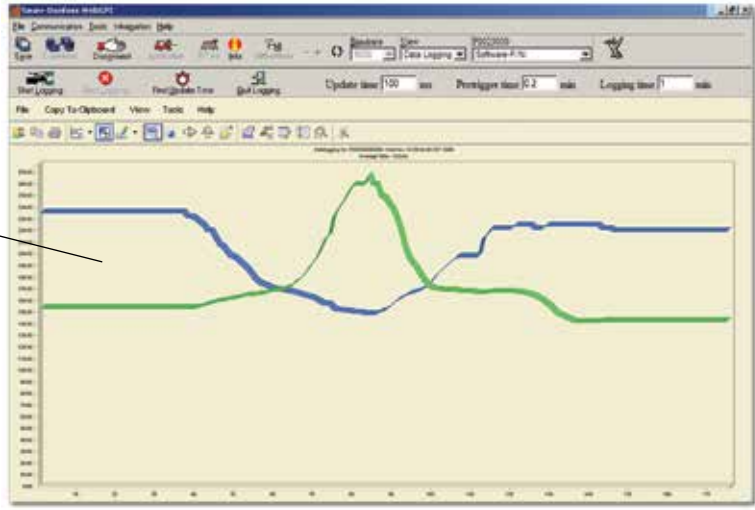


The ability to monitor and tune the operation of devices is provided by the Service Tool.

F101904

Data Logging View

- Data logging control buttons
- Chart options button bar
- Runtime data logging chart



- Standard features include:
- Oscilloscope display for trending and tuning
  - Data record
  - Export feature

F101905

Specifications

System Requirements
Microsoft® Internet Explorer® version 6.0 or later
Microsoft® Windows Vista® 32 bit variants and Windows XP® Home and Professional
60 MB hard drive (including Internet Explorer® and Adobe® Acrobat® installations)

WebGPI™ is offered with a single user, pc locked license that is automatically activated upon purchase, download and installation. More details and the WebGPI™ Users Manual, **K28061** are on line at: [www.Danfoss.com](http://www.Danfoss.com)

**Danfoss Power Solutions US Company**  
 2800 East 13th Street  
 Ames, IA 50010, USA  
 Phone: +1 515 239 6000

**Danfoss Power Solutions GmbH & Co. OHG**  
 Krokamp 35  
 D-24539 Neumünster, Germany  
 Phone: +49 4321 871 0

**Danfoss Power Solutions ApS**  
 Nordborgvej 81  
 DK-6430 Nordborg, Denmark  
 Phone: +45 7488 2222

**Danfoss Power Solutions (Shanghai) Co. Ltd.**  
 Building #22, No. 1000 Jin Hai Rd  
 Jin Qiao, Pudong New District  
 Shanghai, China 201206  
 Phone: +86 21 3418 5200

Danfoss can accept no responsibility for possible errors in catalogues, brochures and other printed material. Danfoss reserves the right to alter its products without notice. This also applies to products already on order provided that such alterations can be made without subsequential changes being necessary in specifications already agreed. All trademarks in this material are property of the respective companies. Danfoss and the Danfoss logotype are trademarks of Danfoss A/S. All rights reserved.