

ENGINEERING
TOMORROW

Danfoss

SpeedUp™

Dry installed floor heating
Rapid installation and
fast reaction



speedup.danfoss.com

SpeedUp™ – Simply Faster

Installing a traditional wet floor heating system is time consuming, and working with screed can be quite messy. Furthermore, a screed system does not always react as fast as your customers wish. The Danfoss SpeedUp™ dry floor heating system overcomes these obstacles and offers optimum ease of installation and rapid reaction.

Dry floor heating system

Danfoss SpeedUp™ is a dry floor heating system = no screed required! This leads to faster, easier installation and shorter heating up and cooling down times, giving your customers benefits such as energy savings and improved comfort.

Why choose SpeedUp™?

The SpeedUp™ polystyrene heat panel is completely covered with aluminium which ensures perfect heat dispersion. The ingenious design of the SpeedUp™ floor heating system allows for a pipe distance of up to 250 mm while maintaining perfect heat dispersion. This will save you many metres of pipe, and subsequently, time and money. SpeedUp™ heat panel is the strongest panel in the market with a density of 240 kPa.

Faster building process

With SpeedUp™ you will not have to wait for screed to dry. This reduces time consumption and costs while making planning much easier. Both you and your customer will enjoy the benefits:

- » Floor is ready for use immediately after installation
- » Visit the building site only once
- » Shorter building process
- » No damage from screed
- » No damage due to humidity



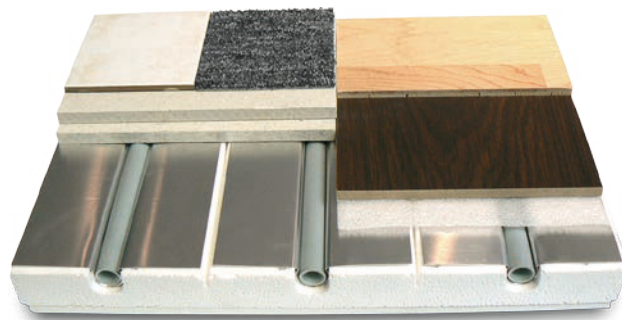
Also perfect for renovation

When it comes to renovations, floor heating systems are often ruled out despite customer wishes. This is normally due to the difficulties of installing traditional wet systems. However, with the low construction height of 5 cm, Danfoss SpeedUp™ is ideal for renovations and can be fitted in the construction.

For any floor finish

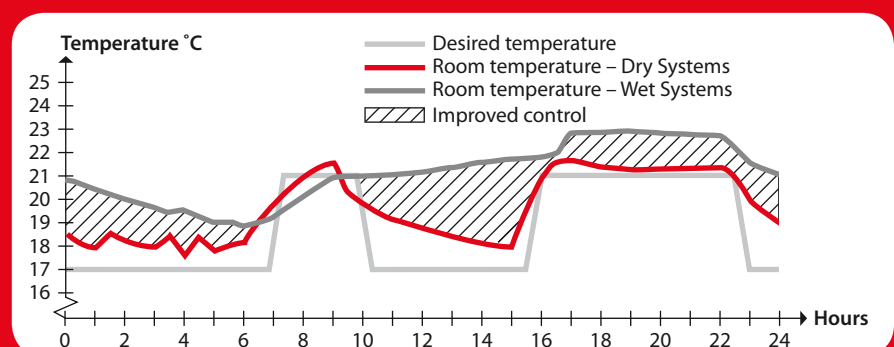
Solid timber, parquet, and even laminate flooring can be installed directly on top of the SpeedUp™ heat panels. If your customers wish to use carpets, tiles, linoleum, etc., simply add a load bearing surface on top of the SpeedUp™ heat panels.

Only 5 cm in construction height including floor finish!



Perfect Control

Comparing a traditional wet screed system to a dry system clearly shows the difference. The dry system with CF2 controls reacts almost immediately, leaving you in full control and ensuring that your floor heating system will provide you with optimum comfort at all times.



SpeedUp™ – Work Smarter

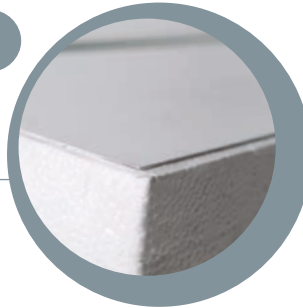
All the components of the SpeedUp™ system are manufactured with efficiency and ease of installation in mind.

The products have been optimised in every detail in order to ensure easy and rapid installation, and this

means that an entire floor heating system can easily be installed by only one man!

● Pre-glued aluminium plates

Polystyrene panels with pre-glued aluminium plates save installation time.



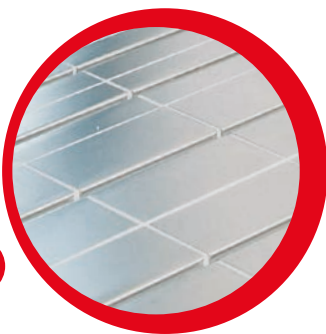
● Pipes with a memory

Once bent, the pipes will maintain the fixed shape, making installation easier than ever.



● Pre-cast line of breakage

Easily snap off pieces of the heat panels in order to adjust size.



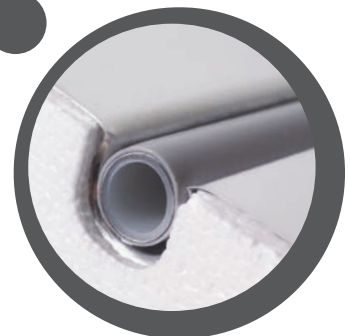
● Aluminium all over

The SpeedUp™ heat panel is completely covered with aluminium, which ensures an even and optimum heat dispersion.



● Make installation a snap

The composite pipes simply snap into the Ω-shaped grooves of the heat panels – and stay there! No sharp edges and thereby no risk to damage the pipes.



● Light-weight products

The light weight means that installation jobs can be carried out by only one man.



Up to 15% energy savings

Whereas traditional screed floor heating systems may take hours to reach the desired room temperature, the Danfoss SpeedUp™ dry system typically does so in less than 30 minutes. The rapid response of the SpeedUp™ floor heating systems means a reduction in energy

consumption of up to 15 %. The Danfoss SpeedUp™ system helps you experience optimum comfort faster than ever. Simply enter the desired temperature settings on your wireless Danfoss CF2 control and watch adjustments take effect in a matter of minutes.

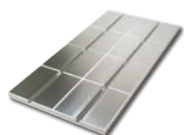
- » Less thermal mass compared to screed
- » Pipes very close to the floor surface
- » Rapid heat transmission aluminium plates – not steel



SpeedUp™

SpeedUp™ heat panels

250 mm pipe distance

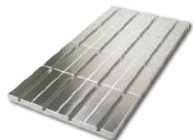


Heat panel CZ
1000x500x30 mm
FH-SA. Code no. 088X0100



Header panel CZ, 4 pcs.
250x500x30 mm
FH-SDA. Code no. 088X0112

125 mm pipe distance



Heat panel EZ
1000x500x30 mm
FH-SB. Code no. 088X0101



Header panel EZ, 4 pcs.
250x500x30 mm
FH-SDB. Code no. 088X0113

SpeedUp™ panels

250 mm rør afstand



Header panel CZ, 4 pcs.
250x500x30 mm
FH-SC. Code no. 088X0102

Blank



Blank panel BP
1000x500x30 mm
FH-SF. Code no. 088X0105

125 mm rør afstand



Header panel EZ, 4 pcs.
250x500x30 mm
FH-SD. Code no. 088X0103

Cross over



Header panel cross over CO
250x375x30 mm
FH-SE. Code no. 088X0104

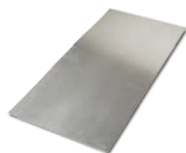
SpeedUp™ supporting elements



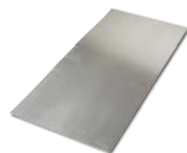
EPS support batten 0.8 m
FH-SFG
Code no. 088X0136



Perimeter insulation 50 m
FH-SK
Code no. 088X0122



Heating aluminium plates
495x242x0.5 mm
FH-SI. Code no. 088X0110



Load bearing steel
800x200x1 mm
FH-SJ. Code no. 088X0111



Hot wire cutter
FH-TOM
Code no. 088X0612

SpeedUp™ pipes



Composite pipe FH-CPA
PE-RT/ALU/PE-RT 16x2 mm
Code no. 088X0001 200 m rulle



Composite pipe FH-CPA
PE-RT/ALU/PE-RT 16x2 mm
Code no. 088X0003 500 m rulle

Find out more about floor heating at heating.danfoss.com

Danfoss A/S · Heating Solutions · Ulvehavevej 61 · DK-7100 Vejle
Telephone: +45 7488 8500 · Email heating@danfoss.com · heating.danfoss.com

Danfoss can accept no responsibility for possible errors in catalogues, brochures and other printed material. Danfoss reserves the right to alter its products without notice. This also applies to products already on order provided that such alterations can be made without subsequential changes being necessary in specifications already agreed. All trademarks in this material are property of the respective companies. Danfoss and the Danfoss logotype are trademarks of Danfoss A/S. All rights reserved.