

Smart floor heating. Business potential. **Wireless.**



Exploit new business opportunities with the new **DEVIreg™ Smart** and **DEVIsmart™ App**



Intelligent solutions
with lasting effect
Visit devismart.com

DEVI® 
by Danfoss

Turn your smartphone into your power tool with the new DEVIreg™ Smart and DEVIsmart™ App

Build your business on smart technology

At DEVI, we strive to continuously improve our products and solutions – and to offer both installers and end-users superior comfort, control and total reliability.

That is why we designed the new DEVIreg™ Smart. Together with the DEVIsmart™ App, it enables you to turn your smartphone into your ultimate power tool and profit from the fastest and easiest installation on the market. That's just Smart.

Find out for yourself!

The DEVI team



WATCH THE VIDEO

See how easy it is to install and set up the new DEVIreg™ Smart with your smartphone.

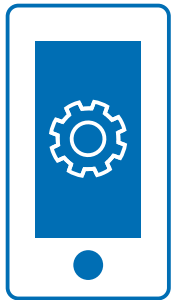




Offer superior comfort and control

The intuitive DEVIsmart™ App gives your customers the opportunity to easily operate their floor heating from anywhere in the world. That means you can offer your customers the highest level of comfort and control.

The app simply turns your customers' mobile device into a remote control. Smart app features like frost protection, weekly schedule, away/vacation settings – and economy mode let them schedule their floor heating in no time – to fit their daily rhythm and reduce energy costs.

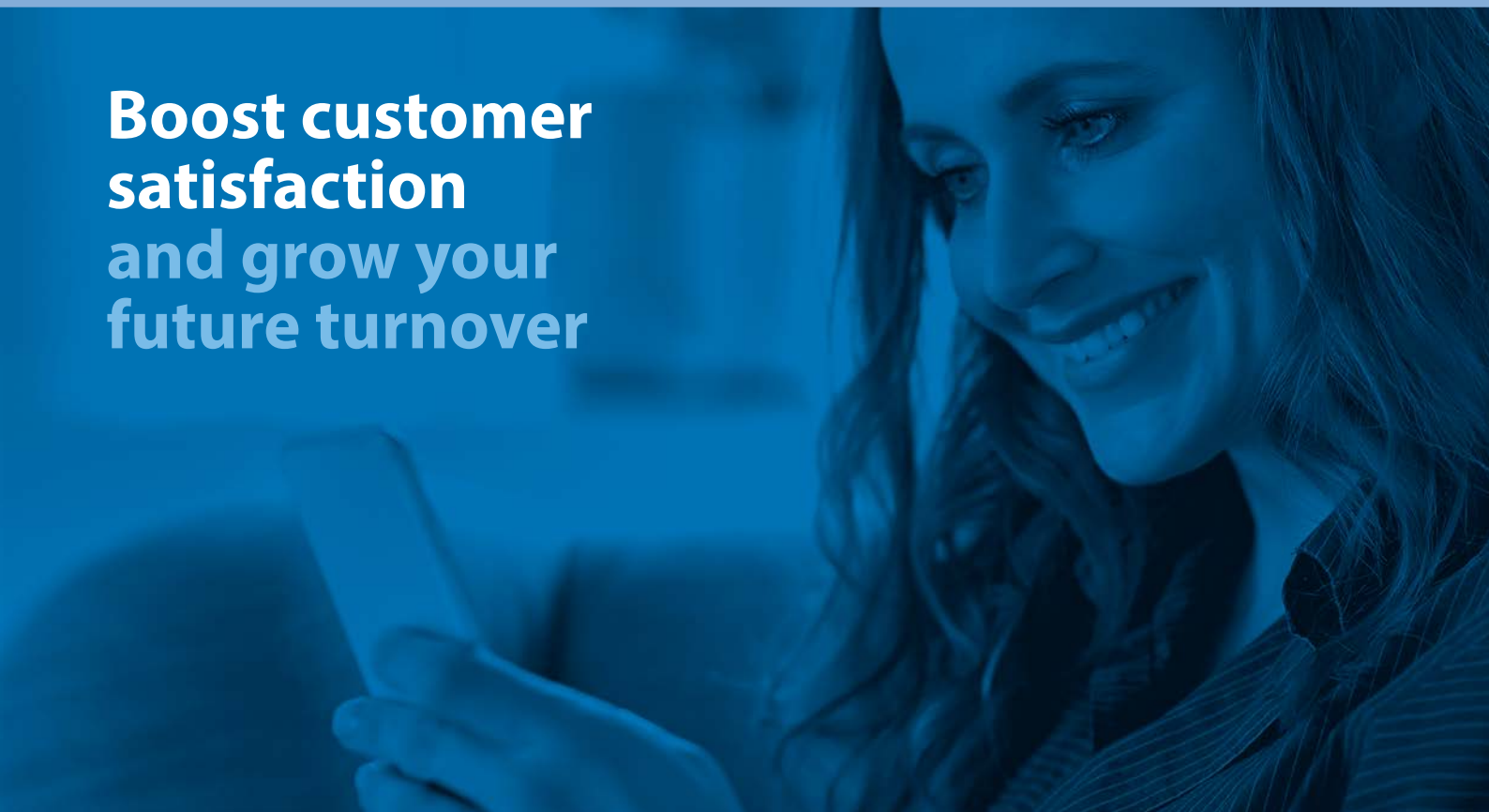


Fast and easy installation

Turn your smartphone into your power tool to enjoy easy and straightforward installation. Complete the entire setup without having to connect to your customers' WiFi.

Simply turn the thermostat into Access Point Mode and connect directly with your smartphone. A user-friendly setup wizard guides you through a series of simple questions about the system you are installing. When the first thermostat has been set up, you can automatically copy settings into other thermostats by using a code. Done!

Boost customer satisfaction and grow your future turnover



Easy installation and setup without internet connection



1. Turn on Access Point mode and connect

Complete the installation directly from your smartphone – without having to connect to your customer's WiFi and without entering a WiFi password.



2. Follow the wizard or enter setup code

Set up thermostats in seconds with the user-friendly setup wizard or copy settings from existing thermostats into new thermostats in no time by using a code.



3. Ready! Your customer can start using the app

Your customers can now connect their thermostat to their home WiFi in just a few simple steps – and enjoy superior, smart heating comfort.



Set up the system in seconds

When the first thermostat has been set up, you can automatically generate a code. This code can then be used to copy the settings into other thermostats.



Discreet and timeless design **with a touch of the future**

Key features:

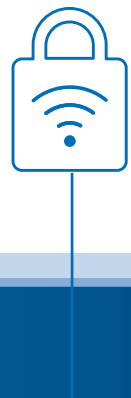
- Simple and intuitive touchscreen operation
- Sleek, stylish design that fits all frames with 55 x 55 hole
- Open window detection automatically switches off the floor heating
- 7 day / 30 day / lifetime energy consumption readout for increased energy use awareness
- Can be paired with up to 10 mobile devices via the DEVIsmart™ App



Intuitive app control **Smart features – happy customers**

Key features:

- Adjust home heating from anywhere in the world
- Set up/operate floor heating locally without needing an internet connection
- Use living zone to easily control the most frequently used thermostats
- Control thermostats in multiple locations (e.g. holiday home)
- Frost protection, weekly schedule, away/vacation settings and economy mode
- Receive notifications/warnings about important system events
- Access dedicated support and troubleshooting directly from the app



Safe and private cloud connection

DEVIreg™ Smart communicates through a safe cloud system based on the same security system used in mobile banking applications. No data is stored in the cloud and your customers' personal information is secure at all times.



Place or replace It's effortless and easy

Multi-frame compatibility

DEVIreg™ Smart is compatible with almost all existing frames (single and multi-frames) and sensors already on the market and can be effortlessly integrated into existing systems. With DEVIreg™ Smart in your vehicle, you will be equipped with everything you need to tackle virtually any job.

Easy upgrade for existing customers

Do your customers already have a DEVIreg™ thermostat? Perfect! The new DEVIreg™ Smart fits the same frame and can easily be exchanged. By generating a code from the existing DEVIreg™ Touch unit, your customers can even copy their heating settings into the DEVIreg™ Smart in seconds.



Compatible frames:

ELKO RS16	ELJO Trend	ABB JUSSI 85mm
Schneider Exxact	LeGrand Valena	LeGrand Galea Life
GIRA Esprit	Merten M-smart	Merten M-plan

Compatible sensors:

Aube 10K	FENIX 10K	Raychem 10K
Eberle 33K	TeploLux 6K8	Warmup 12K
Ensto 47K,	OJ 12K	DEVI 15K

are constantly expanding the number of compatible frames and sensors. Visit devismart.com to see the full list.



Become a Smart installer and build your business

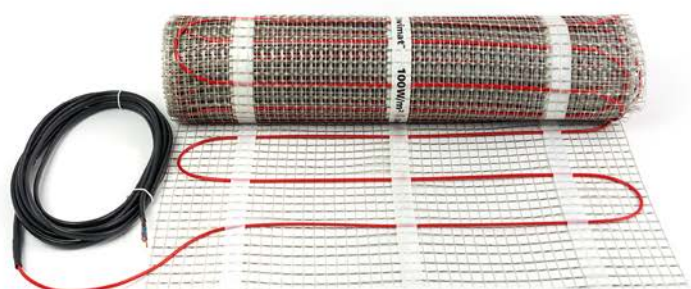
Join DEVI Elite and become part of a Smart community with Smart benefits:

- Each time you buy DEVI products or upgrade your skills you earn points
- Convert your DEVI points into personal gifts
- Get a pin on the DEVI Smart installer map
- Publicise your company to potential new customers via DEVI
- Free membership – sign up today at devismart.com



Did you know?

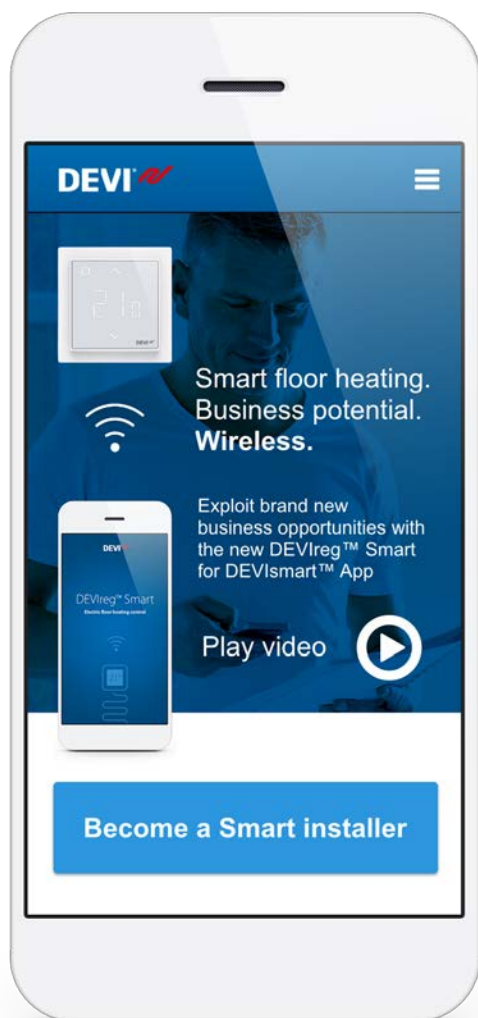
DEVIreg™ Smart is also provided in some of the popular DEVImat™ and DEVIflex™ sets.



Get Smart online Go to devismart.com

With DEVIreg™ Smart, we have optimized everything from installation to performance and after-sales. This ensures real value and provides a new level of reliability, convenience and control, for you and your customers.

Learn more about DEVIreg™ Smart and discover how you can exploit new business opportunities with DEVIreg™ Smart and DEVIsmart™ App. Go to our website for more information, become a Smart installer or download the demo app right now – and find out for yourself how intuitive and smart it is.



VB/WC102