

ENGINEERING  
TOMORROW

*Danfoss*

Hydronic floor heating control

# Danfoss *Icon*<sup>™</sup> Made to match your switch frames

230 volt room thermostats for hydronic floor heating and other applications with actuators.

**Fits**

into compatible  
switch frames from  
manufacturers such  
as Busch-Jaeger, Gira,  
Berker and Merten.



[icon.danfoss.com](http://icon.danfoss.com)

# Simple or advanced

## Matches every preference



### Danfoss Icon™ programmable

For those who want to set desired temperature, see current temperature and schedule different temperatures during the course of the day. Also enabled for cooling and floor sensor.

- Touchscreen control
- Icon-based navigation
- Noiseless switching
- Available as in-wall and on-wall
- Can be build into many switch frames (in-wall only)
- Can control actuator on radiator
- Valve exercise
- Up to 5x2W NC or NO actuators
- Temperature range limitation
- 230V
- Seven pre-defined schedules
- Adaptive learning
- Input for cooling and central 'away'
- Optional floor sensor (separate product code)



### Danfoss Icon™ display

For those who want to set the desired temperature and see current temperature.

- Touchscreen control
- Icon-based navigation
- Noiseless switching
- Available as in-wall and on-wall
- Can be build into many switch frames (in-wall only)
- Can control actuator on radiator
- Valve exercise
- Up to 5x2W NC or NO actuators
- Temperature range limitation
- 230V



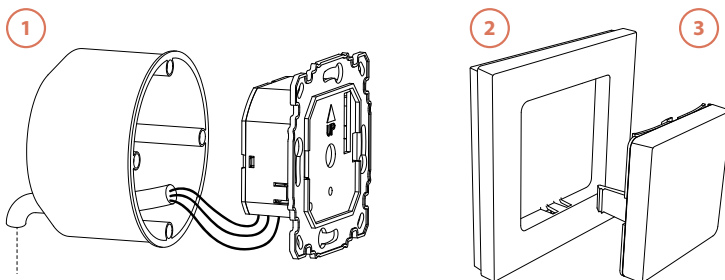
### Danfoss Icon™ dial

For those who simply want to set the desired temperature.

- Available as in-wall and on-wall
- Can be build into many switch frames (in-wall only)
- Up to 5x2W NC or NO actuators
- Temperature range limitation
- 230V

Learn more at:

[icon.danfoss.com](http://icon.danfoss.com)



### Easy installation

1. Connect the rear module with wires and fixate it in a junction box.
2. Place frame (and adapter if relevant) on the rear module. A Danfoss wall frame is included with all in-wall products but can be exchanged with a compatible switch frame and adapter.
3. Snap the front module onto the rear module. It will hold the switch frame in place.