

Installation Guide

Solenoid Valve

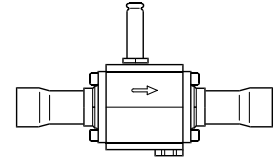
Types EVR 32, EVR 40

032R9518

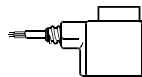
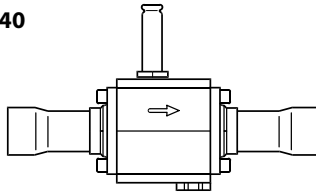
032R9518

Refrigerants:

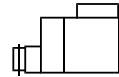
R744, R22/R407C, R404A/R507, R410A, R134a, R407A, R23.
For other refrigerants, please contact Danfoss.



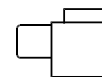
EVR 32, EVR 40



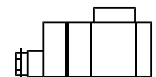
a.c. ~



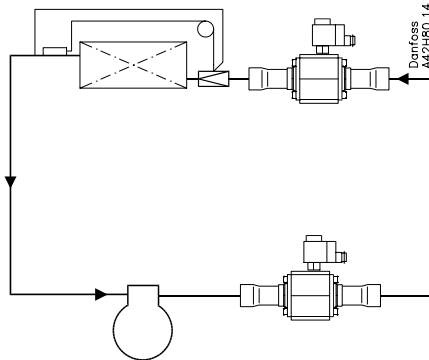
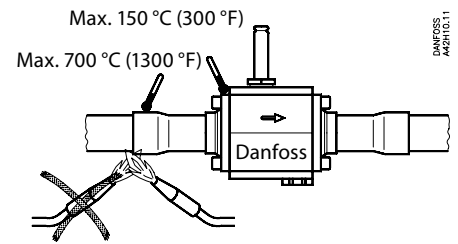
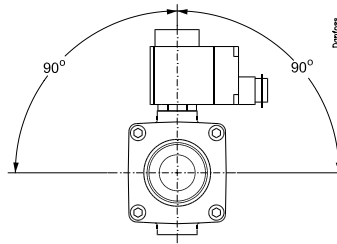
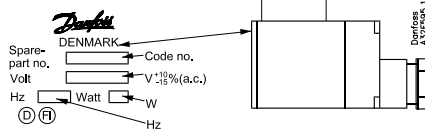
a.c. ~



a.c. ~

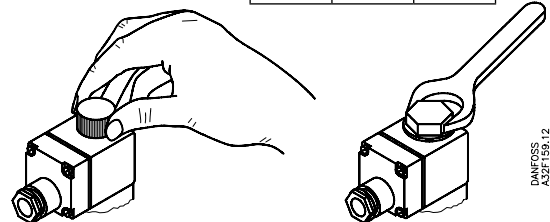


12 a.c. ~
20 W d.c. -



Previous version

| [Nm] | [kpm] | [ft-lbs] |
|------|-------|----------|
| 1.4 | 0.15 | 1 |



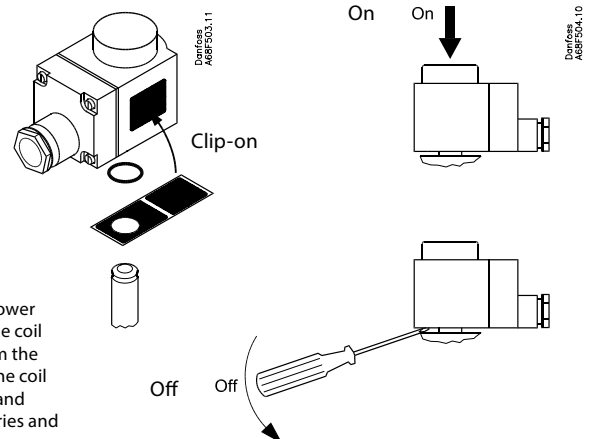
| | | |
|--------------|--|-------------------------------------|
| 10 W a.c. | | $t_{max.} = 80\text{ °C (175 °F)}$ |
| 10/12 W a.c. | | $t_{max.} = 80\text{ °C (175 °F)}$ |
| 20 W d.c. | | $t_{max.} = 50\text{ °C (120 °F)}$ |
| | | $t_{min.} = -40\text{ °C (-40 °F)}$ |

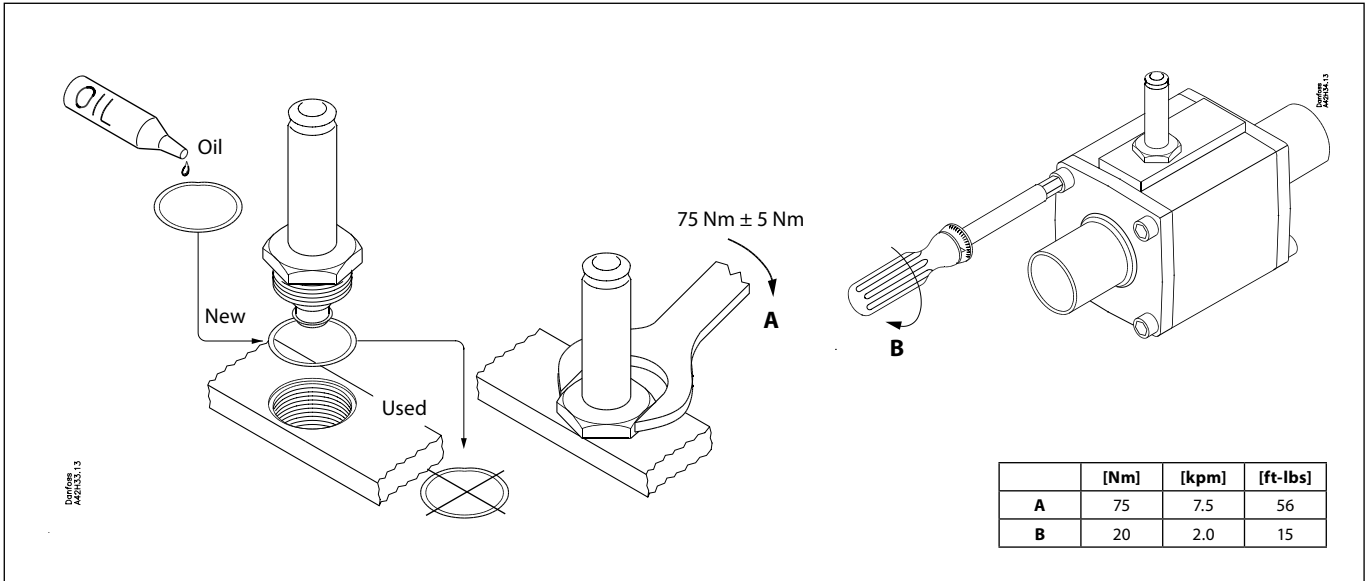
| | |
|----------------------------------|-------------------|
| Min. medium temperature | -40 °C (-40 °F) |
| Max. medium temperature | 105 °C (221 °F) |
| Max. working pressure PS/MWP | 32 bar / 464 psig |
| Max. opening diff. pressure MOPD | |



Warning

Never switch on power to the coil when the coil is dismantled from the valve. Otherwise the coil may be damaged and there is risk of injuries and burns.





EVR 32, EVR 40

