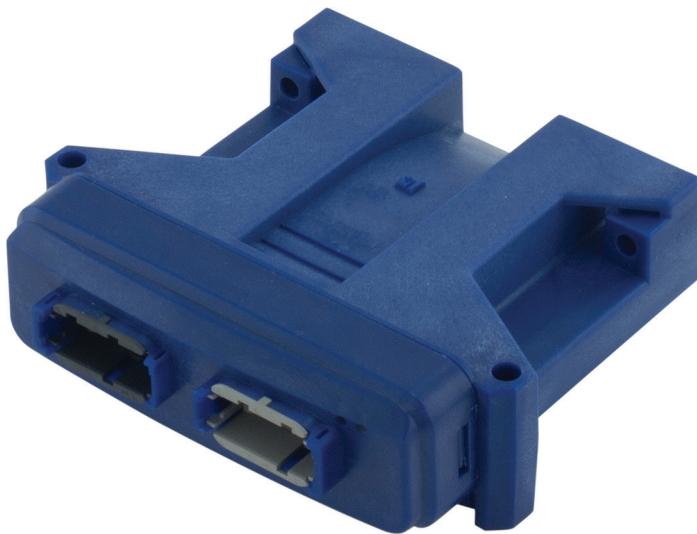




Data Sheet

PLUS+1® Controller

SC024-010 and SC024-012

**Advanced mobile machine management**

These PLUS+1® controllers are advanced elements of the PLUS+1® family of mobile machine management products. The design of this general purpose controller includes features required for sophisticated machine control strategies. It is equally suited for use in safety related or general machine control applications.

Product highlights

These controllers are pin compatible with the PLUS+1® MC equivalent controller. These controllers have dual micro controllers with the secondary having access to all controller inputs and supervisory control of outputs. These controllers support smart digital inputs. Current measurement capability has been added to some multifunction inputs. Device outputs can be individually controlled by the secondary processor. These controllers support low power capability.

Application development

These controllers have an application key that enables the use of Danfoss developed GUIDE machine control solutions. The same Guide HWD file is used with both controllers. The user can develop these controllers' applications using either the PLUS+1® GUIDE development environment or C-code. Application code can be written in both the primary and secondary micro processors.

Features

- Programmable in PLUS+1® GUIDE
- Same general I/O content as the PLUS+1® MC024-010 controller
- Dual processors:
 - Primary: 512kB flash, 128kB RAM
 - Secondary: 128kB flash, 64kB RAM
 - Internal micro to micro UART
- 12 bit analog to digital converter
- 7 to 36 Vdc power supply, monitored internally
- (14) user-defined inputs
 - (6) Digital/Analog/Resistance/4-20 mA current
 - (5) Digital/Analog /Frequency
 - (1) Digital/Analog/CAN shield
 - (1) Digital/Analog/1.6 Vdc sensor power (for smart digital input capability)
 - (1) Digital/Analog/3.3 Vdc sensor power (for smart digital input capability)
- (4) user-defined 3A PWM outputs (PWMOUT/CrntOUT/DOOUT/PVGOUT)
 - Digital: Configurable as source or sink
 - PWM: (30 to 4000 Hz or 20 kHz) configurable as open or closed loop with current control
 - Any PWMOUT/CrntOUT/DOOUT/PVGOUT can be used to provide reference power to one PVG valve
- Each PWM output may have a unique frequency
- (1) CAN 2.0B ports, the shield pin can be configured as a DIN/AIN
- User-defined 3 to 12 Vdc regulated power supply for external sensors
- (2) LEDs under user control
 - Both have alternate yellow color under kernel control to indicate low-level software/hardware failures
- Power supply for external sensors rated at 5 Vdc to 500 mA
- Operating temperature range: -40° C to +85° C
- EMC rating is 150 V/m

