



Model AB-QM Pressure Independent Balancing and Control Valve

Actuator Submittal, Proportional AME 10 Motor Actuator

DATE _____ SPEC. SECTION _____ PAGE _____ OF _____

PROJECT	ARCHITECT/ENGINEER	APPROVALS			
		AGENCY	REPRESENTATIVE	DATE	NOTES
		ARCHITECT			
		ENGINEER			
		CONTRACTOR 1			
		CONTRACTOR 2			
		(OTHER)			
		NOTE	COMMENT		
ORDER NO.					



Description

The AME 10 actuator is a low voltage proportional actuator that is available with a feedback function that is installed on the pressure independent control valve AB-QM in sizes ranging from 1/2" to 1 1/4".

Other features of the AME 10 include:

- No tool requirement for installation
- Linear characteristic actuator
- Force sensitive switch-off reducing overload to the actuator

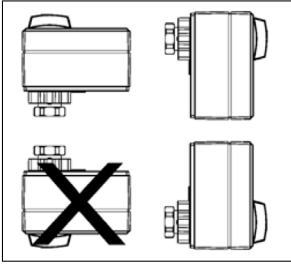
Model	Number	Unit Tag	Qty
AME 10			
	- required spacer 003Z0257		

Specification

The motorized actuator shall be 24VAC powered and mount to the AB-QM valve body. The actuator shall be capable of ensuring that excessive overload travel of actuator does not occur. The operation of the actuator shall be determined based upon a proportional input signal of 0-10VDC, 2-10VDC, 0-20mA, or 4-20mA and in addition be capable of a feedback signal for position indication. The actuator characteristic shall be linear.

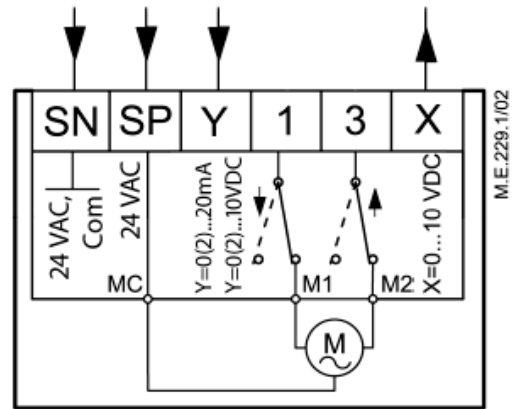
Code No.	AME 10
	082H3005
Power supply	24 VAC; +10%...-15%
Power consumption	2 VA
Frequency	50 Hz/60 Hz
Control input	Proportional, 0(2) -10VDC, 0(4) -20mA
Output signal	0 - 10 VDC
Close off force	300 N
Max. actuator travel	5 mm
Speed	11.75 s/mm
Max. medium temperature	266°F (130 °C)
Ambient temperature	32 ... 131 °F (0 ... 55 °C)
Degree of protection	IP 54, NEMA 2
Weight	1.3 lb (0.6 kg)
CE - marking in accordance with standards	Low Voltage Directive (LVD) 2006/95/EC: EN 60730-1, EN 60730-2-14 EMC Directive 2004/108/EC: EN 61000-6-2, EN 61000-6-3

Orientation



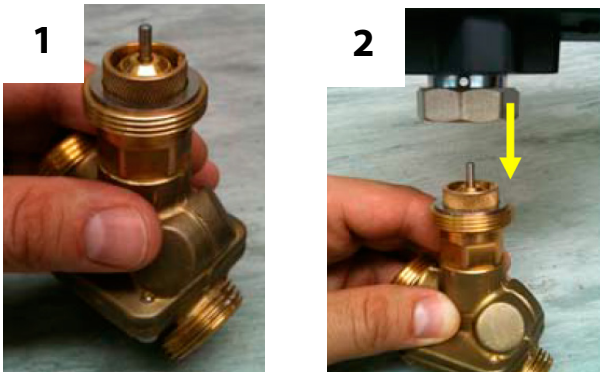
The actuator should be mounted with the valve stem in either horizontal position or pointing upwards. The actuator is fixed to the valve body by means of a mounting ring which is tightened by hand and requires no additional tools for mounting. Prior to wiring the valve it is recommended that the actuator is mounted.

Wiring



M.E.229.1/02

Mounting



AME 10 (**082G3005**):
A spacer (prt# **003Z0257**) is required to be placed between the AB-QM valve body and the motor actuator. Then the actuator is tightened to the valve.

- SP** 24 VAC/DCPower supply
- SN** NeutralCommon
- Y** 0(2) to 10VDCInput Signal
0(4) to 20mA
- X** 0(2) to 10VDCOutput signal

Dimensions

