

Installation guide

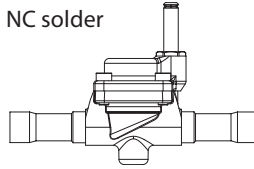
# Solenoid valve

## Type EVR 25 (Version 2)

032R9603

032R9603

NC solder



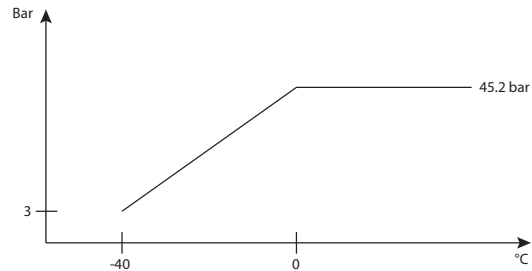
**Refrigerants**

R22/R407C, R134a, R404A/R507, R410A, R407A, R407F, R125, R152A, R448A, R449A, R452A, and R450A.  
For complete list of approved refrigerants, visit [www.products.danfoss.com](http://www.products.danfoss.com) and search for individual code numbers, where refrigerants are listed as part of technical data.

Note, please follow specific selection criteria stated in the datasheet for these particular refrigerants.

**Max. working pressure**

EVR solder: 45.2 bar.

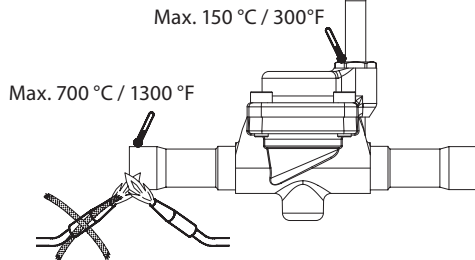


Max. working pressure in bar in relation to media temperature in °C.

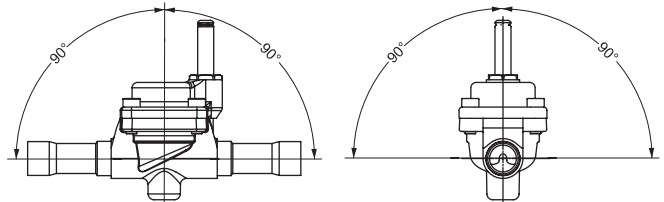
**Media temperature:** -40 °C / -40 °F – 105 °C / 221 °F

**Max. opening diff. pressure (MOPD):** Coil dependent

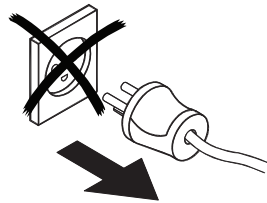
**Mounting**



**Mounting angle**



Always disconnect power from the coil when dismantled from the valve. The coil may be damaged and there is risk of injuries and burns.



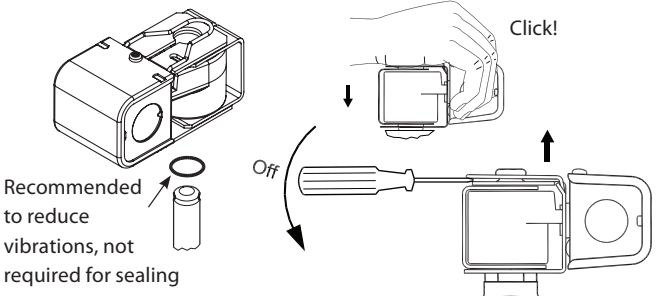
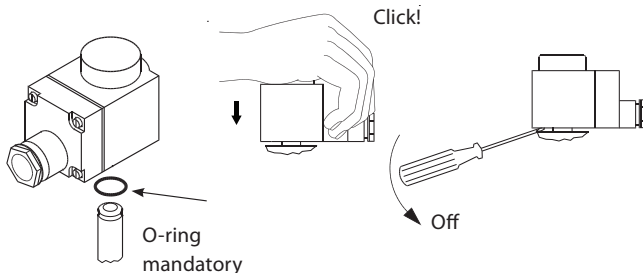
**ID Marking - example**

Valve identification and reference to UL listed coils

<p><b>Danfoss</b> MADE IN DENMARK General-Purpose Valve consists of Body EVR 25 NC 03.3L2200 AND COIL OR BX Max. Media Temp. 221 °F MOPD 550kpa / 545.2 bar / 5MPa55Psi@g Danfoss A/S, 6830 Hørsholm, Denmark 317R</p>	<p><b>Danfoss</b> MADE IN DENMARK General-Purpose Valve consists of Body EVR 25 NC 03.3L2200 AND COIL OR BX Max. Media Temp. 221 °F MOPD 550kpa / 545.2 bar / 5MPa55Psi@g Danfoss A/S, 6830 Hørsholm, Denmark 317R</p>	<p><b>Danfoss</b> MADE IN DENMARK Type BJ120CS Spare part no. 018F4110 110-120V 60Hz 15W 110V 50Hz 16W To be used with listed valve body EVR-EVRH-EVRC-EVRP-EV2xx series AKV-AKVA See armature tube or label UL LISTED EHL Danfoss A/S, 6830 Hørsholm, Denmark</p>
--	--	--

Label

Coil print



Recommended to reduce vibrations, not required for sealing

### Disassembly and assembly of EVR version 2

**Mounting / dismounting of top part**

**Note!**  
Always use cross-tightening

[Nm]	[kpm]	[ft-lbs]
30	3.0	22.5

**⚠ Manual operation for pressure testing and service related operation:**  
 Only use the manual stem operation of the EVR NC valve during initial pressure testing of the refrigeration system or during service related manual operation. Remove the protective cap and rotate the manual stem clockwise approx. 6 cycles from fully closed to fully open position. After the manual operation is completed, ensure to rotate the manual stem counter-clockwise back to fully closed position and re-mount the protective cap before connecting the valve to automatic operation. MOPD for the manual operation function is 5 bar. Alternatively, all EVR NC and NO valves can be manually operated by removing the coil and force the valve open or closed by using a solenoid valve tester (permanent magnet).