

Guide d'entretien

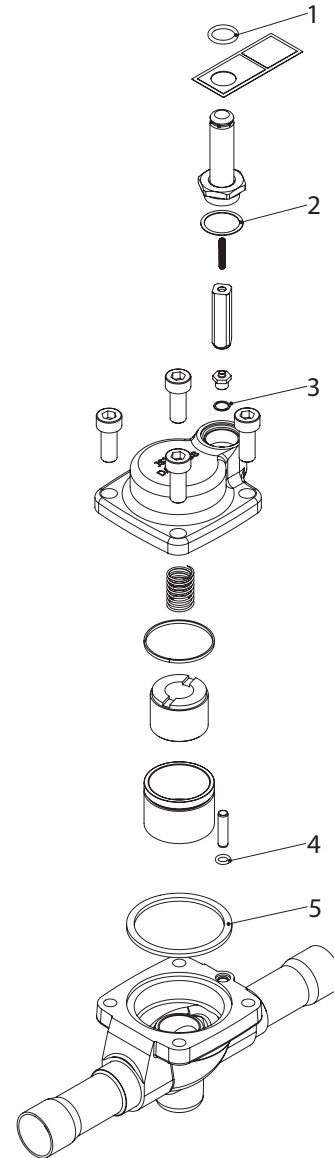
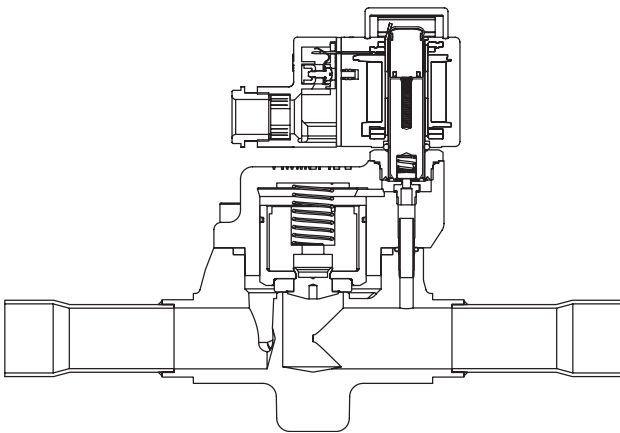
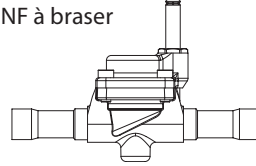
Électrovanne

Type EVR 25 (version 2)

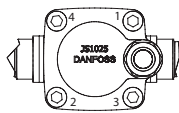
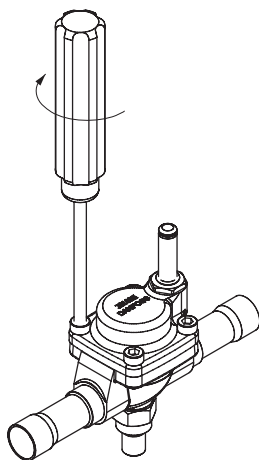
032R9606

032R9606

NF à braser



Montage / démontage de la partie supérieure



Remarque !
Toujours effectuer un serrage croisé

[Nm]	[kpm]	[ft-lbs]
30	3,0	22,5

N° pos.	Description	Dimension	Matériau	Piston	Pilot	kits d'inspection
1	Joint torique	ID 14.30 x H 2.40	Chloroprène	•		•
2	Joint	ID 22.5 x OD 26.4 x H 0.35	SS+NBR		•	•
3	Joint alu.	ID 8.1 x OD 10.1 x H 0.5	Al.			•
4	Joint d'étanchéité	ID 6.07 x H 1.78	Chloroprène	•		•
5	Joint d'étanchéité x 2	OD 66.0 x ID 58.0 x H 3.4	Chloroprène	•		•