

Guida alla manutenzione

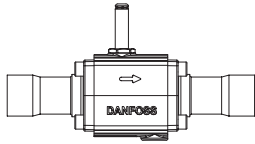
# Elettrovalvola

## Tipi EVR 32 - EVR 40 (Versione 2)

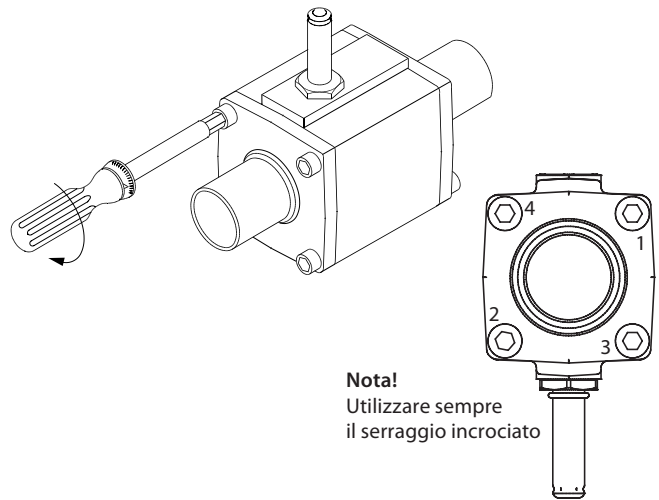
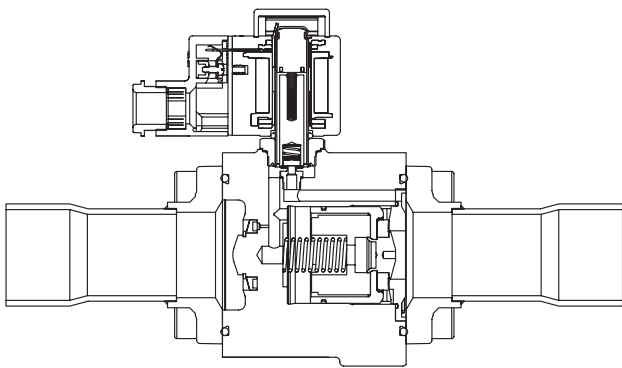
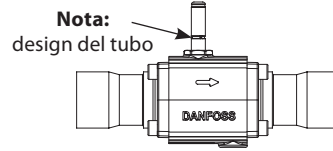
032R9607

032R9607

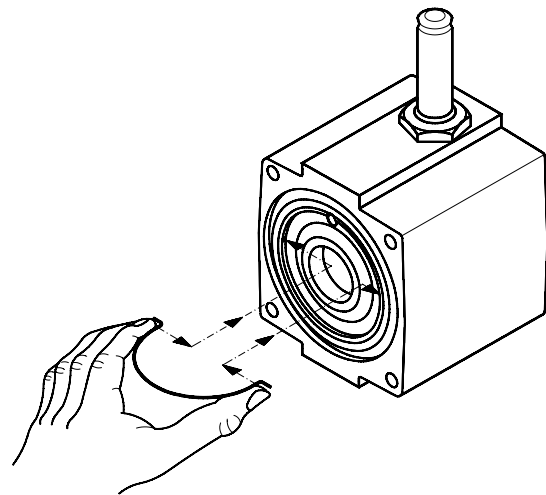
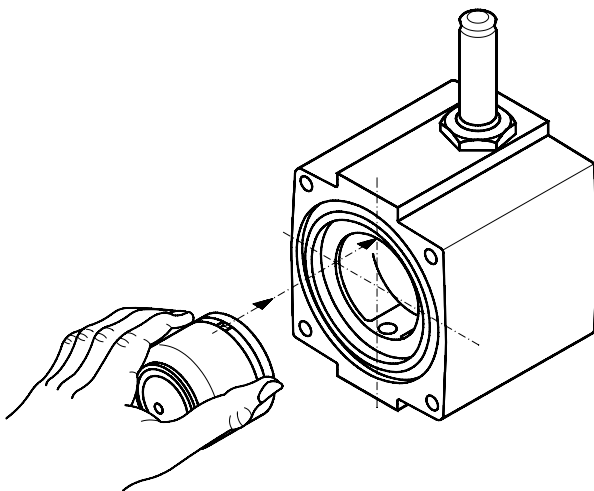
NC a brasare

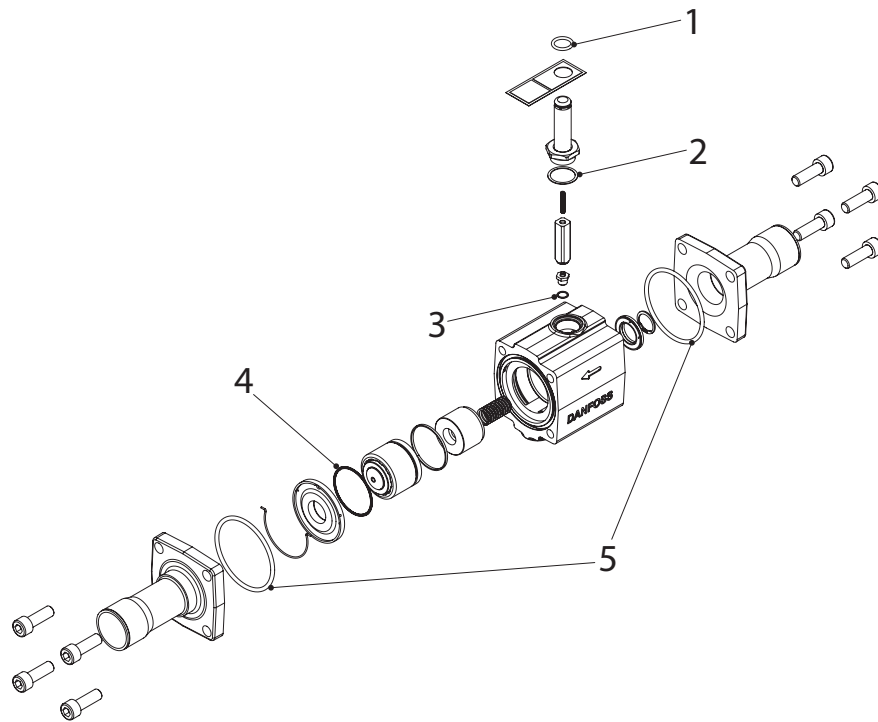


NA a brasare



[Nm]	[kpm]	[ft-lbs]
30	2,0	15





Pos. n.	Descrizione	Dimensioni	Materiale	Pistone	Pilota	Kit d'ispezione
1	O-ring	ID 14.30 x H 2.40	Cloroprene	•		•
2	Gasket	ID 22.5 x OD 26.4 x H 0.35	SS+NBR		•	•
3	Gasket all.	ID 8.1 x OD 10.1 x H 0.5	All.			•
4	O-ring	ID 42.00 x H 1.50	Cloroprene	•		•
5	O-ring x 2	ID 66.27 x H 3.53	Cloroprene	•		•