

Data Sheet

# DDC Axial Piston Pumps

## with Implement Pump, 20/24 cm<sup>3</sup>

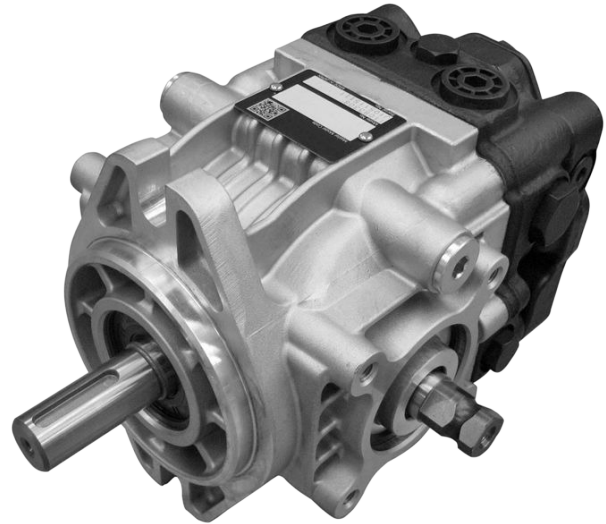
For more than 40 years, Danfoss has been developing state-of-the-art components and systems for mobile machinery used in off-highway operations around the world. We have become a preferred supplier by offering the best of what really matters: The hardware inside your vehicle application.

Implement pump is an integrated charge pump that can be used for the lightly-loaded external work function.

Since implement pump has both external gear pump and charge pump functions, it allows customers to apply more compact sizing than existing system using external gear pump.

The DDC pump with implement pump is a high quality light duty pump which offers expanded functionality, great total efficiency, low noise, and easy installation.

The DDC pump is well suited for turf care applications, compact utility tractors, harvesters, small rollers, and agricultural vehicles.



### Features

#### Designed for Durability and Flexibility

- Compact and light weight aluminum housing
- Single piece swash plate

---

Comprehensive technical literature is online at [www.danfoss.com](http://www.danfoss.com)

---

#### Installation and Packaging Benefits

- Compact design minimizes installation space requirements
- High corner power

#### Optimized for Direct Displacement Control

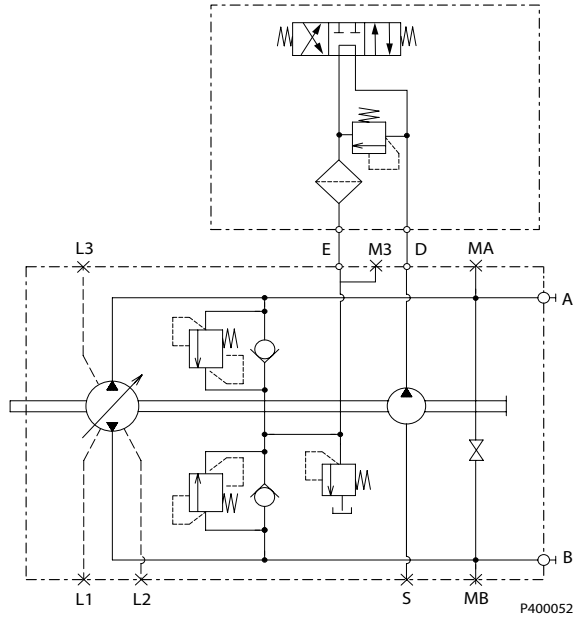
#### Options

- Gerotor implement pump
- Loop bypass valve
- High Pressure Relief Valve (HPRV) and Charge Pressure Relief Valve (CPRV)
- SAE A and SAE B Mounting Flange

**Technical Specifications**

| Features               | Unit                               | Value                  |
|------------------------|------------------------------------|------------------------|
| Displacement           | cm <sup>3</sup> [in <sup>3</sup> ] | 20 [1.22] 24 [1.46]    |
| Weight (w/charge pump) | kg [lb]                            | 11 [24.3]              |
| Input Speed            | Rated                              | min <sup>-1</sup> 4000 |
|                        | Maximum                            | (rpm) 4500             |
| System Pressure        | Max. Working Pressure*             | bar [psi] 300 [4350]   |
|                        | Max. pressure                      | 345 [5004]             |
|                        | Min. Low Loop                      | 4 [58]                 |
| Case Pressure          | Rated                              | bar [psi] 1.5 [21.7]   |
|                        | Maximum                            | 3 [43.5]               |
| Implement Pressure     | Maximum Working Pressure**         | bar [psi] 70 [1015]    |
|                        | Maximum Pressure (absolute)        | 85 [1230]              |

**Schematic**

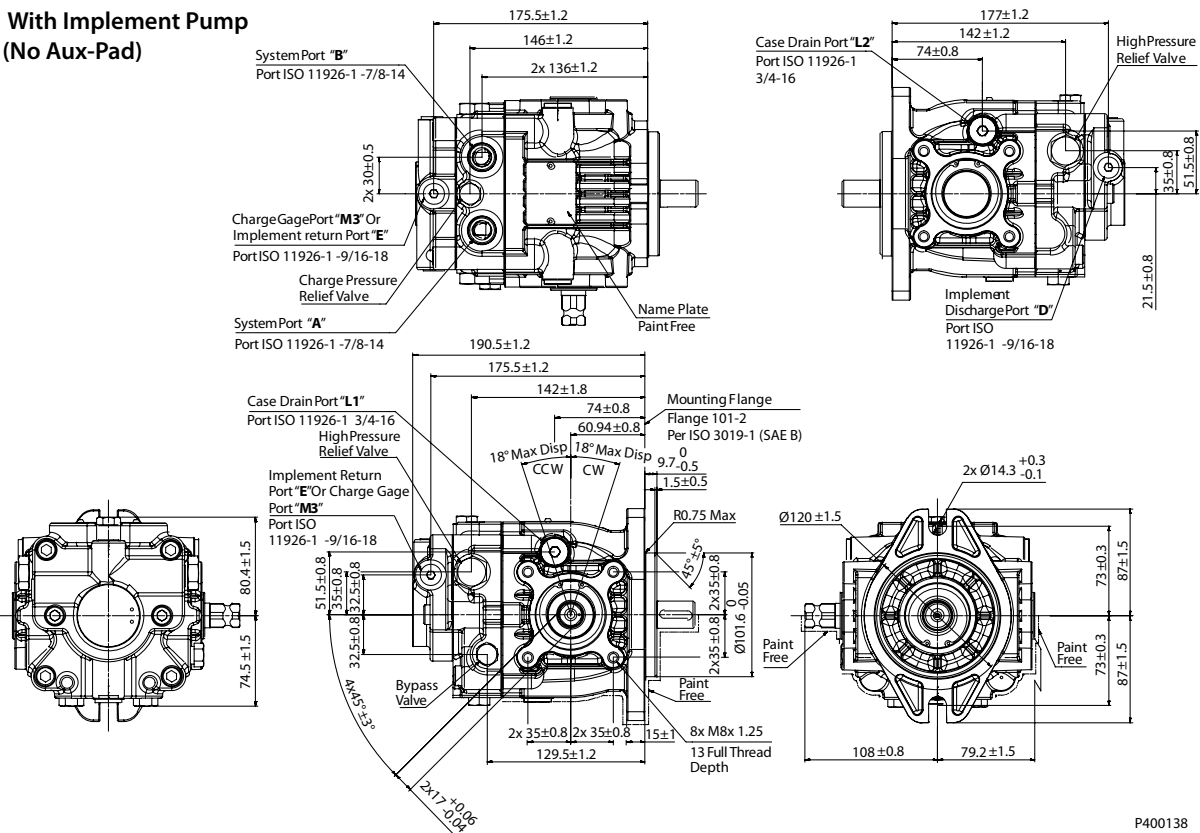


\* Applied pressures above maximum working pressure requires Danfoss application approval.

\*\* Continuous operation at absolute implement pump relief pressure = Short term t < 30sec

**Dimensions**

**With Implement Pump  
(No Aux-Pad)**



Danfoss can accept no responsibility for possible errors in catalogues, brochures and other printed material. Danfoss reserves the right to alter its products without notice. This also applies to products already on order provided that such alterations can be made without subsequent changes being necessary in specifications already agreed. All trademarks in this material are property of the respective companies. Danfoss and the Danfoss logotype are trademarks of Danfoss A/S. All rights reserved.