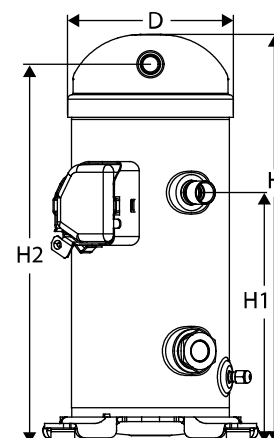


## General Characteristics

Model number (on compressor nameplate)		<b>VZH065CJANB</b>
Code number for Singlepack*		120G0153
Code number for Industrial pack**		120G0145
Drawing number		8590007
Suction and discharge connections		Brazed
Suction connection		7/8" ODF
Discharge connection		3/4" ODF
Oil sight glass		None
Oil equalization connection		None
Oil drain connection		1/4" flare
LP gauge port		None
IPR valve		None
Swept volume	3.97 in <sup>3</sup> /rev	
Displacement @ Nominal speed	496.6 m <sup>3</sup> /h @ 3600 rpm	
Net weight	77 lbs	
Oil charge	53 oz, PVE - FVC32D	
Maximum number of starts per hour	12	
Refrigerant charge limit	12 lbs	
Approved refrigerants	R410A	

## Dimensions



D=7.2 inch, H=17.9 inch,  
H1=11 inch, H2=16.6 inch, H3=-- inch

## Electrical Characteristics

Nominal voltage	Supply voltage 200-240V/3/50-60Hz
Voltage range	180-264 V supply to frequency converter
Winding resistance (between phases) +/- 7% at 77°F	0.053 Ω
Rated Load Amps (RLA)	55.3 A
Motor protection	Motor protection by frequency converter

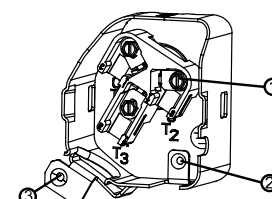
## Terminal box

## Recommended Installation torques

Oil sight glass	39 ft.lbs
Power connections / Earth connection	2 ft.lbs / 1 ft.lbs
Mounting bolts	8 ft.lbs

## Parts shipped with compressor

Mounting kit with grommets and sleeves
Initial oil charge
Installation instructions



IP22

- 1: Power connections
- 2: Earth connection
- 3: EMC bracket with shielded cable

**Approvals :** CE certified, UL certified (file SA6873), -

\*Singlepack: Compressor in cardboard box

\*\*Industrial pack: 12 Unboxed compressors on pallet (order per multiples of 12)

**Rotolock accessories, suction side**
**Code no.**

Rotolock valve, V05 (1-1/4" Rotolock, 7/8" ODF)	8168030
Gasket, 1-1/4"	8156131

**Rotolock accessories, discharge side**
**Code no.**

Solder sleeve, P04 (1-1/4" Rotolock, 3/4" ODF)	8153008
Rotolock valve, V04 (1-1/4" Rotolock, 3/4" ODF)	8168029
Rotolock valve, V04 (1-1/4" Rotolock, 3/4" ODF)	8168029
Gasket, 1-1/4"	8156131

**Rotolock accessories, sets**
**Code no.**

Solder sleeve adapter set (1-1/4"~7/8"), (1-1/4"~3/4")	120Z0128
Gasket set, 1", 1-1/4", 1-3/4", OSG gaskets black & white	8156009

**Oil / lubricants**
**Code no.**
**Crankcase heaters**
**Code no.**

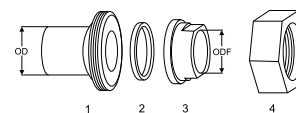
Belt type crankcase heater, 65 W, 230 V, CE mark, UL	120Z0059
Belt type crankcase heater, 65 W, 400 V, CE mark, UL	120Z0060
Belt type crankcase heater, 70 W, 460 V, UL	120Z5012
Belt type crankcase heater, 70 W, 575 V, UL	120Z5013

**Miscellaneous accessories**
**Code no.**

Acoustic hood	120Z5084
---------------	----------

**Spare parts**
**Code no.**

Mounting kit for 1 scroll compressor including 4 grommets, 4 sleeves, 4 bolts, 4 washers, 2 grounding screws	120Z0622
Terminal box cover	120Z5018

**Solder sleeve adapter set**


- 1: Rotolock adapter (Suc & Dis)
- 2: Gasket (Suc & Dis)
- 3: Solder sleeve (Suc & Dis)
- 4: Rotolock nut (Suc & Dis)

**Performance data at 17 Hz, ARI rating conditions**
**R410A**

Cond. temp. in °F (to)	Evaporating temperature in °F (to)								
	-25	-15	-5	5	15	30	50	60	70

**Cooling capacity in Btu/h**

45	-	-	-	-	-	-	-	-	-
60	-	-	-	12 923	16 281	21 537	29 109	-	-
70	-	-	-	11 529	15 165	20 833	28 946	-	-
90	-	-	-	7 645	11 792	18 217	27 322	-	-
100	-	-	-	-	-	-	-	-	-
110	-	-	-	-	-	-	-	-	-
130	-	-	-	-	-	-	-	-	-

**Power input in W**

45	-	-	-	-	-	-	-	-	-
60	-	-	-	799	805	752	448	-	-
70	-	-	-	896	899	882	699	-	-
90	-	-	-	1 292	1 225	1 179	1 104	-	-
100	-	-	-	-	-	-	-	-	-
110	-	-	-	-	-	-	-	-	-
130	-	-	-	-	-	-	-	-	-

**Current consumption in A**

45	-	-	-	-	-	-	-	-	-
60	-	-	-	3.69	3.19	2.24	0.84	-	-
70	-	-	-	4.69	4.42	3.72	2.42	-	-
90	-	-	-	5.80	6.12	6.07	5.20	-	-
100	-	-	-	-	-	-	-	-	-
110	-	-	-	-	-	-	-	-	-
130	-	-	-	-	-	-	-	-	-

**Mass flow in lbs/h**

45	-	-	-	-	-	-	-	-	-
60	-	-	-	140	174	226	301	-	-
70	-	-	-	130	168	226	309	-	-
90	-	-	-	95	144	217	319	-	-
100	-	-	-	-	-	-	-	-	-
110	-	-	-	-	-	-	-	-	-
130	-	-	-	-	-	-	-	-	-

**Energy Efficiency Ratio (E.E.R.)**

45	-	-	-	-	-	-	-	-	-
60	-	-	-	16.18	20.23	28.64	64.93	-	-
70	-	-	-	12.87	16.86	23.61	41.39	-	-
90	-	-	-	5.91	9.63	15.45	24.76	-	-
100	-	-	-	-	-	-	-	-	-
110	-	-	-	-	-	-	-	-	-
130	-	-	-	-	-	-	-	-	-

**Nominal performance at to = 45 °F, tc = 130 °F**

Cooling capacity	-	Btu/h	Current consumption	-	A
Power input	-	W	Mass flow	-	lbs/h
E.E.R.	-				

**Pressure switch settings**

Maximum HP switch setting	634	psi(g)
Minimum LP switch setting	22	psi(g)
LP pump down setting	22	psi(g)

T 0 : Evaporating temperature at dew point

T C : Condensing temperature at dew point

Rating conditions : Superheat = 20 °F , Subcooling = 15 °F

Tolerance according EN12900

**Sound power data**

Sound power level	dB(A)
With acoustic hood	dB(A)

Danfoss can accept no responsibility for possible errors in catalogues, brochures and other printed material. Danfoss reserves the right to alter its products without notice.  
This also applies to products already on order provided that such alternations can be made without subsequential changes being necessary in specifications already agreed.  
All trademarks in this material are property of the respective companies. Danfoss and the Danfoss logotype and Performer are trademarks of Danfoss A/S. All rights reserved.

**Performance data at 20 Hz, ARI rating conditions**
**R410A**

Cond. temp. in °F (to)	Evaporating temperature in °F (to)								
	-25	-15	-5	5	15	30	50	60	70

**Cooling capacity in Btu/h**

45	-	-	-	-	-	-	-	-	-
60	-	-	-	15 530	19 563	26 067	35 797	-	-
70	-	-	-	14 021	18 309	25 186	35 393	-	-
90	-	-	-	9 844	14 578	22 101	33 130	-	-
100	-	-	-	-	-	-	-	-	-
110	-	-	-	-	-	-	-	-	-
130	-	-	-	-	-	-	-	-	-

**Power input in W**

45	-	-	-	-	-	-	-	-	-
60	-	-	-	932	929	846	458	-	-
70	-	-	-	1 052	1 052	1 015	766	-	-
90	-	-	-	1 484	1 423	1 378	1 271	-	-
100	-	-	-	-	-	-	-	-	-
110	-	-	-	-	-	-	-	-	-
130	-	-	-	-	-	-	-	-	-

**Current consumption in A**

45	-	-	-	-	-	-	-	-	-
60	-	-	-	4.02	3.60	2.72	1.17	-	-
70	-	-	-	4.96	4.74	4.10	2.75	-	-
90	-	-	-	6.23	6.48	6.39	5.53	-	-
100	-	-	-	-	-	-	-	-	-
110	-	-	-	-	-	-	-	-	-
130	-	-	-	-	-	-	-	-	-

**Mass flow in lbs/h**

45	-	-	-	-	-	-	-	-	-
60	-	-	-	168	209	274	370	-	-
70	-	-	-	158	203	274	378	-	-
90	-	-	-	122	178	264	387	-	-
100	-	-	-	-	-	-	-	-	-
110	-	-	-	-	-	-	-	-	-
130	-	-	-	-	-	-	-	-	-

**Energy Efficiency Ratio (E.E.R.)**

45	-	-	-	-	-	-	-	-	-
60	-	-	-	16.66	21.06	30.81	78.12	-	-
70	-	-	-	13.33	17.40	24.81	46.20	-	-
90	-	-	-	6.63	10.24	16.04	26.08	-	-
100	-	-	-	-	-	-	-	-	-
110	-	-	-	-	-	-	-	-	-
130	-	-	-	-	-	-	-	-	-

**Nominal performance at to = 45 °F, tc = 130 °F**

Cooling capacity	-	Btu/h	Current consumption	-	A
Power input	-	W	Mass flow	-	lbs/h
E.E.R.	-				

**Pressure switch settings**

Maximum HP switch setting	634	psi(g)
Minimum LP switch setting	22	psi(g)
LP pump down setting	22	psi(g)

T 0 : Evaporating temperature at dew point

T C : Condensing temperature at dew point

Rating conditions : Superheat = 20 °F , Subcooling = 15 °F

Tolerance according EN12900

**Sound power data**

Sound power level	dB(A)
With acoustic hood	dB(A)

Danfoss can accept no responsibility for possible errors in catalogues, brochures and other printed material. Danfoss reserves the right to alter its products without notice.  
This also applies to products already on order provided that such alternations can be made without subsequential changes being necessary in specifications already agreed.  
All trademarks in this material are property of the respective companies. Danfoss and the Danfoss logotype and Performer are trademarks of Danfoss A/S. All rights reserved.

**Performance data at 25 Hz, ARI rating conditions**
**R410A**

Cond. temp. in °F (to)	Evaporating temperature in °F (to)								
	-25	-15	-5	5	15	30	50	60	70

**Cooling capacity in Btu/h**

45	-	-	-	-	-	-	-	-	-
60	-	-	-	19 466	24 515	32 901	45 894	-	-
70	-	-	-	17 786	23 057	31 756	45 127	-	-
90	-	-	-	13 182	18 799	27 977	41 912	-	-
100	-	-	-	-	-	-	-	-	-
110	-	-	-	-	-	-	-	-	-
130	-	-	-	-	-	-	-	-	-

**Power input in W**

45	-	-	-	-	-	-	-	-	-
60	-	-	-	1 142	1 126	1 001	492	-	-
70	-	-	-	1 296	1 292	1 227	883	-	-
90	-	-	-	1 782	1 732	1 687	1 536	-	-
100	-	-	-	-	-	-	-	-	-
110	-	-	-	-	-	-	-	-	-
130	-	-	-	-	-	-	-	-	-

**Current consumption in A**

45	-	-	-	-	-	-	-	-	-
60	-	-	-	4.55	4.24	3.45	1.70	-	-
70	-	-	-	5.42	5.27	4.71	3.27	-	-
90	-	-	-	6.91	7.05	6.93	6.08	-	-
100	-	-	-	-	-	-	-	-	-
110	-	-	-	-	-	-	-	-	-
130	-	-	-	-	-	-	-	-	-

**Mass flow in lbs/h**

45	-	-	-	-	-	-	-	-	-
60	-	-	-	211	262	345	474	-	-
70	-	-	-	200	256	346	483	-	-
90	-	-	-	163	229	334	490	-	-
100	-	-	-	-	-	-	-	-	-
110	-	-	-	-	-	-	-	-	-
130	-	-	-	-	-	-	-	-	-

**Energy Efficiency Ratio (E.E.R.)**

45	-	-	-	-	-	-	-	-	-
60	-	-	-	17.05	21.77	32.88	93.32	-	-
70	-	-	-	13.73	17.85	25.88	51.08	-	-
90	-	-	-	7.40	10.86	16.59	27.29	-	-
100	-	-	-	-	-	-	-	-	-
110	-	-	-	-	-	-	-	-	-
130	-	-	-	-	-	-	-	-	-

**Nominal performance at to = 45 °F, tc = 130 °F**

Cooling capacity	-	Btu/h	Current consumption	-	A
Power input	-	W	Mass flow	-	lbs/h
E.E.R.	-				

**Pressure switch settings**

Maximum HP switch setting	634	psi(g)
Minimum LP switch setting	22	psi(g)
LP pump down setting	22	psi(g)

T 0 : Evaporating temperature at dew point

T C : Condensing temperature at dew point

Rating conditions : Superheat = 20 °F , Subcooling = 15 °F

Tolerance according EN12900

**Sound power data**

Sound power level	dB(A)
With acoustic hood	dB(A)

Danfoss can accept no responsibility for possible errors in catalogues, brochures and other printed material. Danfoss reserves the right to alter its products without notice.  
This also applies to products already on order provided that such alternations can be made without subsequential changes being necessary in specifications already agreed.  
All trademarks in this material are property of the respective companies. Danfoss and the Danfoss logotype and Performer are trademarks of Danfoss A/S. All rights reserved.

**Performance data at 30 Hz, ARI rating conditions**
**R410A**

Cond. temp. in °F (to)	Evaporating temperature in °F (to)								
	-25	-15	-5	5	15	30	50	60	70

**Cooling capacity in Btu/h**

45	-	-	-	-	-	-	-	-	-
60	-	12 815	17 866	23 385	29 443	39 701	55 947	-	-
70	-	10 547	15 818	21 540	27 786	38 295	54 820	-	-
90	-	-	10 522	16 525	23 020	33 842	50 671	-	-
100	-	-	-	13 441	19 997	30 881	47 737	-	-
110	-	-	-	-	16 606	27 489	44 286	-	-
130	-	-	-	-	-	-	-	-	-

**Power input in W**

45	-	-	-	-	-	-	-	-	-
60	-	1 357	1 357	1 361	1 334	1 169	548	-	-
70	-	1 584	1 552	1 548	1 541	1 452	1 021	-	-
90	-	-	2 178	2 090	2 049	2 006	1 816	-	-
100	-	-	-	2 503	2 410	2 337	2 197	-	-
110	-	-	-	-	2 882	2 745	2 607	-	-
130	-	-	-	-	-	-	-	-	-

**Current consumption in A**

45	-	-	-	-	-	-	-	-	-
60	-	5.07	5.16	5.12	4.91	4.19	2.26	-	-
70	-	5.75	5.89	5.93	5.84	5.35	3.84	-	-
90	-	-	7.51	7.63	7.68	7.53	6.70	-	-
100	-	-	-	8.63	8.71	8.66	8.07	-	-
110	-	-	-	-	9.88	9.89	9.49	-	-
130	-	-	-	-	-	-	-	-	-

**Mass flow in lbs/h**

45	-	-	-	-	-	-	-	-	-
60	-	142	196	253	314	417	577	-	-
70	-	122	181	243	308	417	587	-	-
90	-	-	132	204	280	404	593	-	-
100	-	-	-	175	256	388	587	-	-
110	-	-	-	-	225	365	575	-	-
130	-	-	-	-	-	-	-	-	-

**Energy Efficiency Ratio (E.E.R.)**

45	-	-	-	-	-	-	-	-	-
60	-	9.45	13.16	17.19	22.07	33.95	102.16	-	-
70	-	6.66	10.19	13.91	18.04	26.38	53.71	-	-
90	-	-	4.83	7.91	11.24	16.87	27.90	-	-
100	-	-	-	5.37	8.30	13.21	21.72	-	-
110	-	-	-	-	5.76	10.02	16.98	-	-
130	-	-	-	-	-	-	-	-	-

**Nominal performance at to = 45 °F, tc = 130 °F**

Cooling capacity	-	Btu/h	Current consumption	-	A
Power input	-	W	Mass flow	-	lbs/h
E.E.R.	-				

**Pressure switch settings**

Maximum HP switch setting	634	psi(g)
Minimum LP switch setting	22	psi(g)
LP pump down setting	22	psi(g)

T 0 : Evaporating temperature at dew point

T C : Condensing temperature at dew point

Rating conditions : Superheat = 20 °F , Subcooling = 15 °F

Tolerance according EN12900

**Sound power data**

Sound power level	dB(A)
With acoustic hood	dB(A)

Danfoss can accept no responsibility for possible errors in catalogues, brochures and other printed material. Danfoss reserves the right to alter its products without notice.  
This also applies to products already on order provided that such alternations can be made without subsequential changes being necessary in specifications already agreed.  
All trademarks in this material are property of the respective companies. Danfoss and the Danfoss logotype and Performer are trademarks of Danfoss A/S. All rights reserved.

**Performance data at 35 Hz, ARI rating conditions**
**R410A**

Cond. temp. in °F (to)	Evaporating temperature in °F (to)								
	-25	-15	-5	5	15	30	50	60	70

**Cooling capacity in Btu/h**

45	-	-	-	-	-	-	-	-	-
60	-	15 209	20 937	27 287	34 346	46 466	65 957	-	-
70	-	12 833	18 759	25 283	32 496	44 805	64 472	-	-
90	-	-	13 153	19 874	27 240	39 698	59 409	-	-
100	-	-	-	16 567	23 933	36 349	55 930	-	-
110	-	-	-	-	20 239	32 537	51 884	-	-
130	-	-	-	-	-	-	-	-	-

**Power input in W**

45	-	-	-	-	-	-	-	-	-
60	-	1 586	1 588	1 589	1 553	1 352	626	-	-
70	-	1 838	1 811	1 810	1 799	1 688	1 178	-	-
90	-	-	2 484	2 407	2 375	2 335	2 111	-	-
100	-	-	-	2 843	2 764	2 705	2 552	-	-
110	-	-	-	-	3 260	3 146	3 015	-	-
130	-	-	-	-	-	-	-	-	-

**Current consumption in A**

45	-	-	-	-	-	-	-	-	-
60	-	5.52	5.68	5.73	5.61	4.96	2.86	-	-
70	-	6.31	6.42	6.49	6.45	6.03	4.46	-	-
90	-	-	8.44	8.39	8.36	8.19	7.37	-	-
100	-	-	-	9.64	9.54	9.38	8.79	-	-
110	-	-	-	-	10.93	10.71	10.25	-	-
130	-	-	-	-	-	-	-	-	-

**Mass flow in lbs/h**

45	-	-	-	-	-	-	-	-	-
60	-	168	230	295	367	487	680	-	-
70	-	148	214	285	361	488	690	-	-
90	-	-	165	245	331	474	695	-	-
100	-	-	-	215	306	456	688	-	-
110	-	-	-	-	274	432	674	-	-
130	-	-	-	-	-	-	-	-	-

**Energy Efficiency Ratio (E.E.R.)**

45	-	-	-	-	-	-	-	-	-
60	-	9.59	13.18	17.17	22.12	34.36	105.39	-	-
70	-	6.98	10.36	13.97	18.06	26.54	54.75	-	-
90	-	-	5.29	8.26	11.47	17.00	28.14	-	-
100	-	-	-	5.83	8.66	13.44	21.92	-	-
110	-	-	-	-	6.21	10.34	17.21	-	-
130	-	-	-	-	-	-	-	-	-

**Nominal performance at to = 45 °F, tc = 130 °F**

Cooling capacity	-	Btu/h	Current consumption	-	A
Power input	-	W	Mass flow	-	lbs/h
E.E.R.	-				

**Pressure switch settings**

Maximum HP switch setting	634	psi(g)
Minimum LP switch setting	22	psi(g)
LP pump down setting	22	psi(g)

T 0 : Evaporating temperature at dew point

T C : Condensing temperature at dew point

Rating conditions : Superheat = 20 °F , Subcooling = 15 °F

Tolerance according EN12900

**Sound power data**

Sound power level	dB(A)
With acoustic hood	dB(A)

Danfoss can accept no responsibility for possible errors in catalogues, brochures and other printed material. Danfoss reserves the right to alter its products without notice.  
This also applies to products already on order provided that such alternations can be made without subsequential changes being necessary in specifications already agreed.  
All trademarks in this material are property of the respective companies. Danfoss and the Danfoss logotype and Performer are trademarks of Danfoss A/S. All rights reserved.

**Performance data at 40 Hz, ARI rating conditions**
**R410A**

Cond. temp. in °F (tc)	Evaporating temperature in °F (to)								
	-25	-15	-5	5	15	30	50	60	70

**Cooling capacity in Btu/h**

45	-	-	-	-	-	-	-	-	-
60	-	17 598	23 999	31 172	39 226	53 197	75 923	-	-
70	-	15 120	21 695	29 014	37 188	51 285	74 082	87 439	-
90	-	9 049	15 795	23 229	31 461	45 543	68 125	81 291	95 852
100	-	-	12 306	19 709	27 881	41 821	64 116	77 097	91 446
110	-	-	-	15 842	23 895	37 604	59 493	72 230	86 307
130	-	-	-	-	-	27 901	48 622	60 691	74 044

**Power input in W**

45	-	-	-	-	-	-	-	-	-
60	-	1 823	1 827	1 827	1 782	1 550	726	-	-
70	-	2 100	2 078	2 080	2 067	1 938	1 354	799	-
90	-	2 952	2 801	2 733	2 710	2 674	2 421	2 119	1 649
100	-	-	3 333	3 193	3 127	3 082	2 919	2 707	2 355
110	-	-	-	3 782	3 649	3 557	3 434	3 286	3 028
130	-	-	-	-	-	4 827	4 636	4 541	4 396

**Current consumption in A**

45	-	-	-	-	-	-	-	-	-
60	-	6.05	6.26	6.38	6.33	5.73	3.49	-	-
70	-	6.94	7.02	7.11	7.11	6.75	5.12	3.62	-
90	-	9.76	9.39	9.20	9.09	8.90	8.11	7.29	6.05
100	-	-	11.10	10.67	10.41	10.15	9.57	8.99	8.08
110	-	-	-	12.49	12.01	11.58	11.08	10.67	10.02
130	-	-	-	-	-	15.21	14.46	14.18	13.84

**Mass flow in lbs/h**

45	-	-	-	-	-	-	-	-	-
60	-	195	263	337	419	558	782	-	-
70	-	175	248	327	413	559	793	930	-
90	-	115	198	287	382	543	797	944	1 106
100	-	-	162	256	357	525	789	941	1 108
110	-	-	-	217	323	498	772	929	1 102
130	-	-	-	-	-	420	714	881	1 064

**Energy Efficiency Ratio (E.E.R.)**

45	-	-	-	-	-	-	-	-	-
60	-	9.65	13.13	17.06	22.01	34.32	104.52	-	-
70	-	7.20	10.44	13.95	17.99	26.47	54.70	109.40	-
90	-	3.07	5.64	8.50	11.61	17.03	28.14	38.37	58.14
100	-	-	3.69	6.17	8.92	13.57	21.96	28.49	38.83
110	-	-	-	4.19	6.55	10.57	17.32	21.98	28.50
130	-	-	-	-	-	5.78	10.49	13.36	16.84

**Nominal performance at to = 45 °F, tc = 130 °F**

Cooling capacity	43 035	Btu/h	Current consumption	14.61	A
Power input	4 676	W	Mass flow	635	lbs/h
E.E.R.	9.20				

**Pressure switch settings**

Maximum HP switch setting	634	psi(g)
Minimum LP switch setting	22	psi(g)
LP pump down setting	22	psi(g)

T 0 : Evaporating temperature at dew point

T C : Condensing temperature at dew point

Rating conditions : Superheat = 20 °F , Subcooling = 15 °F

Tolerance according EN12900

**Sound power data**

Sound power level	dB(A)
With acoustic hood	dB(A)

Danfoss can accept no responsibility for possible errors in catalogues, brochures and other printed material. Danfoss reserves the right to alter its products without notice.  
This also applies to products already on order provided that such alternations can be made without subsequential changes being necessary in specifications already agreed.  
All trademarks in this material are property of the respective companies. Danfoss and the Danfoss logotype and Performer are trademarks of Danfoss A/S. All rights reserved.



**Performance data at 45 Hz, ARI rating conditions**
**R410A**

Cond. temp. in °F (tc)	Evaporating temperature in °F (to)								
	-25	-15	-5	5	15	30	50	60	70

**Cooling capacity in Btu/h**

45	-	-	-	-	-	-	-	-	-
60	-	19 984	27 050	35 040	44 081	59 893	85 845	-	-
70	-	17 408	24 626	32 735	41 860	57 735	83 651	98 932	-
90	-	11 125	18 446	26 590	35 682	51 378	76 818	91 758	108 349
100	-	-	14 807	22 866	31 841	47 296	72 296	86 965	103 250
110	-	-	-	18 787	27 577	42 690	67 115	81 445	97 358
130	-	-	-	-	-	32 140	55 010	68 461	83 426

**Power input in W**

45	-	-	-	-	-	-	-	-	-
60	-	2 070	2 075	2 074	2 023	1 762	849	-	-
70	-	2 372	2 353	2 358	2 345	2 200	1 551	937	-
90	-	3 273	3 128	3 068	3 053	3 023	2 745	2 411	1 890
100	-	-	3 685	3 555	3 500	3 468	3 299	3 066	2 678
110	-	-	-	4 169	4 049	3 978	3 866	3 708	3 426
130	-	-	-	-	-	5 310	5 156	5 071	4 925

**Current consumption in A**

45	-	-	-	-	-	-	-	-	-
60	-	6.65	6.90	7.08	7.09	6.53	4.15	-	-
70	-	7.63	7.68	7.78	7.81	7.50	5.83	4.20	-
90	-	10.96	10.37	10.05	9.88	9.67	8.91	8.07	6.78
100	-	-	12.38	11.72	11.32	10.98	10.43	9.86	8.94
110	-	-	-	13.82	13.12	12.52	11.99	11.61	10.98
130	-	-	-	-	-	16.45	15.50	15.22	14.93

**Mass flow in lbs/h**

45	-	-	-	-	-	-	-	-	-
60	-	221	297	379	471	628	885	-	-
70	-	201	281	369	465	630	896	1 053	-
90	-	142	231	328	434	613	899	1 066	1 251
100	-	-	195	297	407	593	889	1 061	1 251
110	-	-	-	257	372	566	871	1 048	1 242
130	-	-	-	-	-	483	807	994	1 198

**Energy Efficiency Ratio (E.E.R.)**

45	-	-	-	-	-	-	-	-	-
60	-	9.66	13.03	16.90	21.79	33.99	101.08	-	-
70	-	7.34	10.46	13.88	17.85	26.25	53.95	105.64	-
90	-	3.40	5.90	8.67	11.69	17.00	27.98	38.06	57.33
100	-	-	4.02	6.43	9.10	13.64	21.91	28.36	38.56
110	-	-	-	4.51	6.81	10.73	17.36	21.97	28.42
130	-	-	-	-	-	6.05	10.67	13.50	16.94

**Nominal performance at to = 45 °F, tc = 130 °F**

Cooling capacity	48 813	Btu/h	Current consumption	15.67	A
Power input	5 189	W	Mass flow	720	lbs/h
E.E.R.	9.41				

**Pressure switch settings**

Maximum HP switch setting	634	psi(g)
Minimum LP switch setting	22	psi(g)
LP pump down setting	22	psi(g)

T 0 : Evaporating temperature at dew point

T C : Condensing temperature at dew point

Rating conditions : Superheat = 20 °F , Subcooling = 15 °F

Tolerance according EN12900

**Sound power data**

Sound power level	dB(A)
With acoustic hood	dB(A)

Danfoss can accept no responsibility for possible errors in catalogues, brochures and other printed material. Danfoss reserves the right to alter its products without notice.  
This also applies to products already on order provided that such alternations can be made without subsequential changes being necessary in specifications already agreed.  
All trademarks in this material are property of the respective companies. Danfoss and the Danfoss logotype and Performer are trademarks of Danfoss A/S. All rights reserved.

**Performance data at 50 Hz, ARI rating conditions**
**R410A**

Cond. temp. in °F (to)	Evaporating temperature in °F (to)								
	-25	-15	-5	5	15	30	50	60	70

**Cooling capacity in Btu/h**

45	-	-	-	-	-	-	-	-	-
60	-	22 365	30 091	38 891	48 911	66 554	95 723	-	-
70	-	19 697	27 554	36 444	46 514	64 154	93 179	110 381	-
90	-	13 213	21 109	29 956	39 902	57 203	85 489	102 200	120 818
100	-	-	17 326	26 040	35 812	52 776	80 469	96 822	115 042
110	-	-	-	21 759	31 282	47 797	74 749	90 670	108 417
130	-	-	-	-	-	36 433	61 455	76 289	92 867

**Power input in W**

45	-	-	-	-	-	-	-	-	-
60	-	2 325	2 332	2 330	2 274	1 988	994	-	-
70	-	2 653	2 638	2 646	2 633	2 474	1 767	1 099	-
90	-	3 608	3 465	3 413	3 406	3 381	3 085	2 722	2 155
100	-	-	4 050	3 927	3 883	3 864	3 693	3 442	3 021
110	-	-	-	4 569	4 461	4 409	4 308	4 143	3 841
130	-	-	-	-	-	5 807	5 688	5 613	5 468

**Current consumption in A**

45	-	-	-	-	-	-	-	-	-
60	-	7.33	7.59	7.81	7.87	7.35	4.84	-	-
70	-	8.39	8.40	8.50	8.56	8.29	6.58	4.85	-
90	-	12.17	11.38	10.94	10.71	10.50	9.78	8.93	7.59
100	-	-	13.65	12.79	12.28	11.88	11.35	10.80	9.88
110	-	-	-	15.15	14.25	13.51	12.98	12.62	12.03
130	-	-	-	-	-	17.75	16.63	16.36	16.12

**Mass flow in lbs/h**

45	-	-	-	-	-	-	-	-	-
60	-	247	330	421	522	698	986	-	-
70	-	227	315	410	517	700	998	1 175	-
90	-	168	264	369	485	682	1 000	1 187	1 395
100	-	-	228	338	458	662	989	1 181	1 393
110	-	-	-	298	422	633	970	1 166	1 383
130	-	-	-	-	-	548	902	1 107	1 333

**Energy Efficiency Ratio (E.E.R.)**

45	-	-	-	-	-	-	-	-	-
60	-	9.62	12.90	16.69	21.51	33.48	96.26	-	-
70	-	7.42	10.45	13.77	17.67	25.93	52.74	100.47	-
90	-	3.66	6.09	8.78	11.72	16.92	27.71	37.55	56.05
100	-	-	4.28	6.63	9.22	13.66	21.79	28.13	38.08
110	-	-	-	4.76	7.01	10.84	17.35	21.88	28.22
130	-	-	-	-	-	6.27	10.80	13.59	16.98

**Nominal performance at to = 45 °F, tc = 130 °F**

Cooling capacity	54 647	Btu/h	Current consumption	16.81	A
Power input	5 713	W	Mass flow	806	lbs/h
E.E.R.	9.57				

**Pressure switch settings**

Maximum HP switch setting	634	psi(g)
Minimum LP switch setting	22	psi(g)
LP pump down setting	22	psi(g)

T 0 : Evaporating temperature at dew point

T C : Condensing temperature at dew point

Rating conditions : Superheat = 20 °F , Subcooling = 15 °F

Tolerance according EN12900

**Sound power data**

Sound power level	dB(A)
With acoustic hood	dB(A)

Danfoss can accept no responsibility for possible errors in catalogues, brochures and other printed material. Danfoss reserves the right to alter its products without notice.  
This also applies to products already on order provided that such alterations can be made without subsequent changes being necessary in specifications already agreed.  
All trademarks in this material are property of the respective companies. Danfoss and the Danfoss logotype and Performer are trademarks of Danfoss A/S. All rights reserved.

**Performance data at 55 Hz, ARI rating conditions**
**R410A**

Cond. temp. in °F (tc)	Evaporating temperature in °F (to)								
	-25	-15	-5	5	15	30	50	60	70

**Cooling capacity in Btu/h**

45	-	-	-	-	-	-	-	-	-
60	-	24 743	33 123	42 725	53 718	73 180	105 558	-	-
70	-	21 987	30 476	40 141	51 149	70 544	102 665	121 785	-
90	-	15 314	23 781	33 329	44 123	63 018	94 139	112 615	133 260
100	-	-	19 863	29 230	39 796	58 259	88 636	106 670	126 823
110	-	-	-	24 757	35 013	52 923	82 395	99 904	119 485
130	-	-	-	-	-	40 780	67 956	84 173	102 368

**Power input in W**

45	-	-	-	-	-	-	-	-	-
60	-	2 588	2 597	2 596	2 535	2 229	1 162	-	-
70	-	2 944	2 931	2 942	2 930	2 761	2 003	1 286	-
90	-	3 955	3 814	3 767	3 767	3 750	3 439	3 052	2 446
100	-	-	4 428	4 310	4 275	4 269	4 099	3 835	3 387
110	-	-	-	4 983	4 884	4 849	4 763	4 594	4 276
130	-	-	-	-	-	6 318	6 232	6 169	6 027

**Current consumption in A**

45	-	-	-	-	-	-	-	-	-
60	-	8.08	8.34	8.59	8.68	8.18	5.57	-	-
70	-	9.22	9.18	9.28	9.36	9.12	7.38	5.56	-
90	-	13.37	12.41	11.87	11.60	11.39	10.70	9.86	8.48
100	-	-	14.91	13.89	13.28	12.83	12.34	11.81	10.90
110	-	-	-	16.46	15.41	14.56	14.04	13.72	13.16
130	-	-	-	-	-	19.08	17.85	17.60	17.41

**Mass flow in lbs/h**

45	-	-	-	-	-	-	-	-	-
60	-	274	363	462	574	768	1 088	-	-
70	-	254	348	452	568	770	1 100	1 296	-
90	-	195	298	411	536	752	1 102	1 308	1 538
100	-	-	262	379	508	731	1 090	1 301	1 536
110	-	-	-	339	472	701	1 069	1 284	1 524
130	-	-	-	-	-	613	997	1 221	1 469

**Energy Efficiency Ratio (E.E.R.)**

45	-	-	-	-	-	-	-	-	-
60	-	9.56	12.75	16.46	21.19	32.84	90.84	-	-
70	-	7.47	10.40	13.64	17.46	25.55	51.26	94.72	-
90	-	3.87	6.24	8.85	11.71	16.81	27.37	36.90	54.49
100	-	-	4.49	6.78	9.31	13.65	21.62	27.82	37.45
110	-	-	-	4.97	7.17	10.91	17.30	21.75	27.94
130	-	-	-	-	-	6.45	10.90	13.65	16.98

**Nominal performance at to = 45 °F, tc = 130 °F**

Cooling capacity	60 536	Btu/h	Current consumption	18.04	A
Power input	6 250	W	Mass flow	893	lbs/h
E.E.R.	9.69				

**Pressure switch settings**

Maximum HP switch setting	634	psi(g)
Minimum LP switch setting	22	psi(g)
LP pump down setting	22	psi(g)

T 0 : Evaporating temperature at dew point

T C : Condensing temperature at dew point

Rating conditions : Superheat = 20 °F , Subcooling = 15 °F

Tolerance according EN12900

**Sound power data**

Sound power level	dB(A)
With acoustic hood	dB(A)

Danfoss can accept no responsibility for possible errors in catalogues, brochures and other printed material. Danfoss reserves the right to alter its products without notice.  
This also applies to products already on order provided that such alterations can be made without subsequent changes being necessary in specifications already agreed.  
All trademarks in this material are property of the respective companies. Danfoss and the Danfoss logotype and Performer are trademarks of Danfoss A/S. All rights reserved.

# Datasheet, performance data

# Danfoss scroll compressor. VZH065CJ

## Performance data at 60 Hz, ARI rating conditions

## R410A

Cond. temp. in °F (tc)	Evaporating temperature in °F (to)								
	-25	-15	-5	5	15	30	50	60	70

### Cooling capacity in Btu/h

45	-	-	-	-	-	-	-	-	-
60	-	27 117	36 144	46 542	58 500	79 771	115 349	-	-
70	-	24 277	33 395	43 828	55 765	76 903	112 110	133 147	-
90	-	17 428	26 465	36 707	48 343	68 823	102 766	123 005	145 675
100	-	-	22 419	32 436	43 791	63 746	96 796	116 507	138 592
110	-	-	-	27 781	38 768	58 068	90 052	109 147	130 562
130	-	-	-	-	-	45 181	74 512	92 115	111 927

### Power input in W

45	-	-	-	-	-	-	-	-	-
60	-	2 860	2 871	2 871	2 808	2 483	1 352	-	-
70	-	3 243	3 232	3 247	3 236	3 061	2 258	1 498	-
90	-	4 315	4 173	4 130	4 137	4 128	3 808	3 401	2 760
100	-	-	4 819	4 704	4 676	4 684	4 518	4 243	3 773
110	-	-	-	5 411	5 319	5 300	5 229	5 058	4 729
130	-	-	-	-	-	6 844	6 788	6 737	6 601

### Current consumption in A

45	-	-	-	-	-	-	-	-	-
60	-	8.90	9.16	9.41	9.51	9.02	6.33	-	-
70	-	10.11	10.03	10.11	10.20	9.98	8.22	6.34	-
90	-	14.57	13.47	12.84	12.54	12.34	11.69	10.85	9.45
100	-	-	16.16	15.00	14.32	13.85	13.41	12.90	11.99
110	-	-	-	17.77	16.59	15.67	15.18	14.89	14.36
130	-	-	-	-	-	20.46	19.16	18.94	18.80

### Mass flow in lbs/h

45	-	-	-	-	-	-	-	-	-
60	-	300	396	504	625	837	1 188	-	-
70	-	280	381	493	620	839	1 201	1 417	-
90	-	222	331	452	587	821	1 203	1 429	1 682
100	-	-	295	420	559	799	1 190	1 421	1 678
110	-	-	-	380	523	769	1 168	1 403	1 665
130	-	-	-	-	-	679	1 093	1 336	1 606

### Energy Efficiency Ratio (E.E.R.)

45	-	-	-	-	-	-	-	-	-
60	-	9.48	12.59	16.21	20.83	32.12	85.32	-	-
70	-	7.49	10.33	13.50	17.23	25.13	49.64	88.90	-
90	-	4.04	6.34	8.89	11.68	16.67	26.99	36.17	52.78
100	-	-	4.65	6.89	9.36	13.61	21.42	27.46	36.73
110	-	-	-	5.13	7.29	10.96	17.22	21.58	27.61
130	-	-	-	-	-	6.60	10.98	13.67	16.95

### Nominal performance at to = 45 °F, tc = 130 °F

Cooling capacity	66 480	Btu/h	Current consumption	19.35	A
Power input	6 799	W	Mass flow	981	lbs/h
E.E.R.	9.78				

### Pressure switch settings

Maximum HP switch setting	634	psi(g)
Minimum LP switch setting	22	psi(g)
LP pump down setting	22	psi(g)

T 0 : Evaporating temperature at dew point

T C : Condensing temperature at dew point

Rating conditions : Superheat = 20 °F , Subcooling = 15 °F

Tolerance according EN12900

### Sound power data

Sound power level	79	dB(A)
With acoustic hood	70	dB(A)

Danfoss can accept no responsibility for possible errors in catalogues, brochures and other printed material. Danfoss reserves the right to alter its products without notice.  
This also applies to products already on order provided that such alterations can be made without subsequent changes being necessary in specifications already agreed.  
All trademarks in this material are property of the respective companies. Danfoss and the Danfoss logotype and Performer are trademarks of Danfoss A/S. All rights reserved.

**Performance data at 65 Hz, ARI rating conditions**
**R410A**

Cond. temp. in °F (to)	Evaporating temperature in °F (to)								
	-25	-15	-5	5	15	30	50	60	70

**Cooling capacity in Btu/h**

45	-	-	-	-	-	-	-	-	-
60	-	29 487	39 156	50 343	63 257	86 328	125 097	-	-
70	-	26 569	36 309	47 503	60 362	83 232	121 513	144 464	-
90	-	19 554	29 158	40 091	52 563	74 617	111 371	133 369	158 062
100	-	-	24 993	35 657	47 798	69 237	104 950	126 334	150 350
110	-	-	-	30 831	42 548	63 233	97 722	118 400	141 647
130	-	-	-	-	-	49 637	81 125	100 114	121 546

**Power input in W**

45	-	-	-	-	-	-	-	-	-
60	-	3 141	3 154	3 155	3 091	2 753	1 564	-	-
70	-	3 551	3 542	3 560	3 553	3 373	2 534	1 735	-
90	-	4 688	4 542	4 503	4 516	4 516	4 192	3 769	3 099
100	-	-	5 223	5 110	5 088	5 108	4 950	4 669	4 181
110	-	-	-	5 853	5 765	5 761	5 707	5 537	5 200
130	-	-	-	-	-	7 384	7 357	7 318	7 191

**Current consumption in A**

45	-	-	-	-	-	-	-	-	-
60	-	9.81	10.02	10.27	10.38	9.89	7.13	-	-
70	-	11.06	10.93	10.99	11.08	10.88	9.10	7.17	-
90	-	15.78	14.55	13.86	13.53	13.34	12.74	11.91	10.50
100	-	-	17.40	16.14	15.41	14.93	14.54	14.06	13.17
110	-	-	-	19.06	17.80	16.84	16.39	16.15	15.65
130	-	-	-	-	-	21.89	20.57	20.38	20.29

**Mass flow in lbs/h**

45	-	-	-	-	-	-	-	-	-
60	-	326	429	545	676	906	1 289	-	-
70	-	307	414	535	671	908	1 302	1 538	-
90	-	249	365	494	638	890	1 304	1 549	1 825
100	-	-	329	462	610	868	1 290	1 541	1 821
110	-	-	-	422	574	837	1 267	1 522	1 806
130	-	-	-	-	-	746	1 190	1 452	1 744

**Energy Efficiency Ratio (E.E.R.)**

45	-	-	-	-	-	-	-	-	-
60	-	9.39	12.42	15.96	20.46	31.36	79.98	-	-
70	-	7.48	10.25	13.34	16.99	24.68	47.96	83.28	-
90	-	4.17	6.42	8.90	11.64	16.52	26.57	35.39	51.00
100	-	-	4.78	6.98	9.39	13.55	21.20	27.06	35.96
110	-	-	-	5.27	7.38	10.98	17.12	21.38	27.24
130	-	-	-	-	-	6.72	11.03	13.68	16.90

**Nominal performance at to = 45 °F, tc = 130 °F**

Cooling capacity	72 481	Btu/h	Current consumption	20.75	A
Power input	7 360	W	Mass flow	1 069	lbs/h
E.E.R.	9.85				

**Pressure switch settings**

Maximum HP switch setting	634	psi(g)
Minimum LP switch setting	22	psi(g)
LP pump down setting	22	psi(g)

T 0 : Evaporating temperature at dew point

T C : Condensing temperature at dew point

Rating conditions : Superheat = 20 °F , Subcooling = 15 °F

Tolerance according EN12900

**Sound power data**

Sound power level	dB(A)
With acoustic hood	dB(A)

Danfoss can accept no responsibility for possible errors in catalogues, brochures and other printed material. Danfoss reserves the right to alter its products without notice.  
This also applies to products already on order provided that such alternations can be made without subsequent changes being necessary in specifications already agreed.  
All trademarks in this material are property of the respective companies. Danfoss and the Danfoss logotype and Performer are trademarks of Danfoss A/S. All rights reserved.

**Performance data at 70 Hz, ARI rating conditions**
**R410A**

Cond. temp. in °F (to)	Evaporating temperature in °F (to)								
	-25	-15	-5	5	15	30	50	60	70

**Cooling capacity in Btu/h**

45	-	-	-	-	-	-	-	-	-
60	-	31 852	42 157	54 126	67 991	92 850	134 800	-	-
70	-	28 862	39 218	51 167	64 941	89 532	130 876	155 737	-
90	-	21 694	31 862	43 481	56 783	80 402	119 954	143 707	170 422
100	-	17 658	27 586	38 895	51 817	74 731	113 097	136 151	162 096
110	-	-	23 006	33 908	46 352	68 418	105 404	127 663	152 741
130	-	-	-	23 014	34 213	54 145	87 793	108 170	131 225

**Power input in W**

45	-	-	-	-	-	-	-	-	-
60	-	3 430	3 445	3 449	3 385	3 036	1 799	-	-
70	-	3 869	3 860	3 883	3 879	3 697	2 829	1 997	-
90	-	5 073	4 922	4 885	4 904	4 914	4 591	4 156	3 463
100	-	5 911	5 641	5 526	5 509	5 542	5 395	5 111	4 610
110	-	-	6 533	6 308	6 223	6 231	6 197	6 031	5 690
130	-	-	-	8 442	8 124	7 939	7 937	7 912	7 795

**Current consumption in A**

45	-	-	-	-	-	-	-	-	-
60	-	10.78	10.95	11.17	11.27	10.77	7.95	-	-
70	-	12.08	11.89	11.93	12.01	11.82	10.03	8.07	-
90	-	16.98	15.66	14.92	14.57	14.40	13.86	13.04	11.62
100	-	20.71	18.63	17.30	16.53	16.06	15.74	15.29	14.42
110	-	-	22.41	20.35	19.04	18.07	17.68	17.48	17.01
130	-	-	-	28.76	25.94	23.36	22.06	21.92	21.87

**Mass flow in lbs/h**

45	-	-	-	-	-	-	-	-	-
60	-	352	462	586	726	974	1 389	-	-
70	-	333	448	576	722	977	1 403	1 658	-
90	-	276	399	536	690	959	1 404	1 670	1 967
100	-	237	363	504	662	937	1 390	1 660	1 963
110	-	-	320	464	625	906	1 367	1 641	1 948
130	-	-	-	357	524	813	1 287	1 568	1 882

**Energy Efficiency Ratio (E.E.R.)**

45	-	-	-	-	-	-	-	-	-
60	-	9.29	12.24	15.69	20.09	30.58	74.95	-	-
70	-	7.46	10.16	13.18	16.74	24.21	46.27	78.00	-
90	-	4.28	6.47	8.90	11.58	16.36	26.13	34.58	49.22
100	-	2.99	4.89	7.04	9.41	13.48	20.96	26.64	35.17
110	-	-	3.52	5.38	7.45	10.98	17.01	21.17	26.84
130	-	-	-	2.73	4.21	6.82	11.06	13.67	16.83

**Nominal performance at to = 45 °F, tc = 130 °F**

Cooling capacity	78 536	Btu/h	Current consumption	22.23	A
Power input	7 933	W	Mass flow	1 159	lbs/h
E.E.R.	9.90				

**Pressure switch settings**

Maximum HP switch setting	634	psi(g)
Minimum LP switch setting	22	psi(g)
LP pump down setting	22	psi(g)

T 0 : Evaporating temperature at dew point

T C : Condensing temperature at dew point

Rating conditions : Superheat = 20 °F , Subcooling = 15 °F

Tolerance according EN12900

**Sound power data**

Sound power level	dB(A)
With acoustic hood	dB(A)

Danfoss can accept no responsibility for possible errors in catalogues, brochures and other printed material. Danfoss reserves the right to alter its products without notice.  
This also applies to products already on order provided that such alterations can be made without subsequent changes being necessary in specifications already agreed.  
All trademarks in this material are property of the respective companies. Danfoss and the Danfoss logotype and Performer are trademarks of Danfoss A/S. All rights reserved.

# Datasheet, performance data

# Danfoss scroll compressor. VZH065CJ

## Performance data at 75 Hz, ARI rating conditions

## R410A

Cond. temp. in °F (to)	Evaporating temperature in °F (to)								
	-25	-15	-5	5	15	30	50	60	70

### Cooling capacity in Btu/h

45	-	-	-	-	-	-	-	-	-
60	-	34 214	45 149	57 893	72 700	99 338	144 460	-	-
70	-	31 156	42 123	54 819	69 500	95 801	140 197	166 967	-
90	-	23 847	34 576	46 877	61 003	86 176	128 514	154 019	182 754
100	-	19 738	30 197	42 149	55 847	80 230	121 238	145 958	173 830
110	-	-	25 510	37 012	50 181	73 622	113 099	136 935	163 843
130	-	-	-	25 792	37 603	58 708	94 517	116 283	140 963

### Power input in W

45	-	-	-	-	-	-	-	-	-
60	-	3 728	3 745	3 752	3 690	3 334	2 056	-	-
70	-	4 196	4 188	4 214	4 214	4 035	3 143	2 283	-
90	-	5 471	5 313	5 276	5 301	5 322	5 004	4 562	3 850
100	-	6 356	6 072	5 953	5 939	5 985	5 853	5 569	5 060
110	-	-	7 011	6 777	6 692	6 712	6 698	6 539	6 198
130	-	-	-	9 021	8 691	8 508	8 529	8 519	8 414

### Current consumption in A

45	-	-	-	-	-	-	-	-	-
60	-	11.83	11.94	12.12	12.19	11.67	8.81	-	-
70	-	13.17	12.91	12.91	12.98	12.80	11.01	9.03	-
90	-	18.18	16.79	16.02	15.67	15.52	15.03	14.24	12.83
100	-	22.01	19.84	18.47	17.70	17.26	17.01	16.60	15.75
110	-	-	23.73	21.63	20.30	19.35	19.05	18.89	18.46
130	-	-	-	30.32	27.46	24.88	23.65	23.56	23.56

### Mass flow in lbs/h

45	-	-	-	-	-	-	-	-	-
60	-	378	495	627	777	1 042	1 488	-	-
70	-	360	481	617	772	1 046	1 503	1 778	-
90	-	303	433	577	741	1 028	1 504	1 789	2 110
100	-	265	398	546	713	1 006	1 490	1 780	2 105
110	-	-	355	506	677	975	1 466	1 760	2 089
130	-	-	-	400	576	882	1 386	1 686	2 022

### Energy Efficiency Ratio (E.E.R.)

45	-	-	-	-	-	-	-	-	-
60	-	9.18	12.06	15.43	19.70	29.79	70.28	-	-
70	-	7.43	10.06	13.01	16.49	23.75	44.60	73.12	-
90	-	4.36	6.51	8.88	11.51	16.19	25.68	33.76	47.46
100	-	3.11	4.97	7.08	9.40	13.41	20.71	26.21	34.36
110	-	-	3.64	5.46	7.50	10.97	16.89	20.94	26.43
130	-	-	-	2.86	4.33	6.90	11.08	13.65	16.75

### Nominal performance at to = 45 °F, tc = 130 °F

Cooling capacity	84 648	Btu/h	Current consumption	23.79	A
Power input	8 518	W	Mass flow	1 249	lbs/h
E.E.R.	9.94				

### Pressure switch settings

Maximum HP switch setting	634	psi(g)
Minimum LP switch setting	22	psi(g)
LP pump down setting	22	psi(g)

T 0 : Evaporating temperature at dew point

T C : Condensing temperature at dew point

Rating conditions : Superheat = 20 °F , Subcooling = 15 °F

Tolerance according EN12900

### Sound power data

Sound power level	dB(A)
With acoustic hood	dB(A)

Danfoss can accept no responsibility for possible errors in catalogues, brochures and other printed material. Danfoss reserves the right to alter its products without notice.  
This also applies to products already on order provided that such alternations can be made without subsequential changes being necessary in specifications already agreed.  
All trademarks in this material are property of the respective companies. Danfoss and the Danfoss logotype and Performer are trademarks of Danfoss A/S. All rights reserved.

**Performance data at 80 Hz, ARI rating conditions**
**R410A**

Cond. temp. in °F (to)	Evaporating temperature in °F (to)								
	-25	-15	-5	5	15	30	50	60	70

**Cooling capacity in Btu/h**

45	-	-	-	-	-	-	-	-	-
60	-	36 572	48 131	61 642	77 384	105 790	154 077	-	-
70	-	33 450	45 024	58 461	74 041	102 040	149 476	178 153	-
90	-	26 012	37 301	50 278	65 223	91 940	137 053	164 305	195 059
100	-	21 836	32 827	45 419	59 890	85 732	129 372	155 755	185 553
110	-	-	28 040	40 141	54 035	78 846	120 805	146 216	174 954
130	-	-	-	28 616	41 043	63 325	101 298	124 453	150 760

**Power input in W**

45	-	-	-	-	-	-	-	-	-
60	-	4 035	4 053	4 064	4 005	3 646	2 335	-	-
70	-	4 531	4 523	4 554	4 559	4 384	3 478	2 595	-
90	-	5 882	5 714	5 677	5 706	5 740	5 433	4 987	4 263
100	-	6 816	6 515	6 391	6 380	6 437	6 324	6 044	5 531
110	-	-	7 507	7 260	7 172	7 202	7 211	7 061	6 725
130	-	-	-	9 623	9 277	9 091	9 134	9 139	9 049

**Current consumption in A**

45	-	-	-	-	-	-	-	-	-
60	-	12.96	12.98	13.10	13.13	12.58	9.71	-	-
70	-	14.32	14.00	13.96	14.00	13.81	12.03	10.06	-
90	-	19.38	17.95	17.16	16.81	16.70	16.27	15.51	14.12
100	-	23.25	21.05	19.67	18.91	18.52	18.35	17.97	17.15
110	-	-	25.00	22.89	21.58	20.70	20.49	20.37	19.98
130	-	-	-	31.78	28.95	26.44	25.33	25.29	25.34

**Mass flow in lbs/h**

45	-	-	-	-	-	-	-	-	-
60	-	405	528	667	827	1 110	1 588	-	-
70	-	386	514	658	823	1 114	1 602	1 897	-
90	-	331	467	619	792	1 097	1 604	1 909	2 252
100	-	293	432	588	765	1 075	1 590	1 899	2 247
110	-	-	390	549	729	1 044	1 566	1 879	2 231
130	-	-	-	444	629	951	1 486	1 805	2 162

**Energy Efficiency Ratio (E.E.R.)**

45	-	-	-	-	-	-	-	-	-
60	-	9.06	11.87	15.17	19.32	29.01	65.99	-	-
70	-	7.38	9.95	12.84	16.24	23.27	42.98	68.65	-
90	-	4.42	6.53	8.86	11.43	16.02	25.23	32.95	45.76
100	-	3.20	5.04	7.11	9.39	13.32	20.46	25.77	33.55
110	-	-	3.74	5.53	7.53	10.95	16.75	20.71	26.02
130	-	-	-	2.97	4.42	6.97	11.09	13.62	16.66

**Nominal performance at to = 45 °F, tc = 130 °F**

Cooling capacity	90 815	Btu/h	Current consumption	25.44	A
Power input	9 115	W	Mass flow	1 340	lbs/h
E.E.R.	9.96				

**Pressure switch settings**

Maximum HP switch setting	634	psi(g)
Minimum LP switch setting	22	psi(g)
LP pump down setting	22	psi(g)

T 0 : Evaporating temperature at dew point

T C : Condensing temperature at dew point

Rating conditions : Superheat = 20 °F , Subcooling = 15 °F

Tolerance according EN12900

**Sound power data**

Sound power level	dB(A)
With acoustic hood	dB(A)

Danfoss can accept no responsibility for possible errors in catalogues, brochures and other printed material. Danfoss reserves the right to alter its products without notice.  
This also applies to products already on order provided that such alternations can be made without subsequential changes being necessary in specifications already agreed.  
All trademarks in this material are property of the respective companies. Danfoss and the Danfoss logotype and Performer are trademarks of Danfoss A/S. All rights reserved.



**Performance data at 85 Hz, ARI rating conditions**
**R410A**

Cond. temp. in °F (to)	Evaporating temperature in °F (to)								
	-25	-15	-5	5	15	30	50	60	70

**Cooling capacity in Btu/h**

45	-	-	-	-	-	-	-	-	-
60	-	38 926	51 103	65 375	82 045	112 208	163 649	-	-
70	-	35 746	47 920	62 091	78 563	108 249	158 715	189 295	-
90	-	28 190	40 036	53 686	69 443	97 694	145 570	174 565	207 336
100	-	23 954	35 475	48 704	63 944	91 238	137 499	165 542	197 264
110	-	-	30 596	43 297	57 913	84 090	128 523	155 507	186 074
130	-	-	-	31 485	44 534	67 996	108 134	132 680	160 616

**Power input in W**

45	-	-	-	-	-	-	-	-	-
60	-	4 350	4 370	4 386	4 331	3 973	2 636	-	-
70	-	4 876	4 868	4 902	4 914	4 746	3 832	2 932	-
90	-	6 305	6 126	6 087	6 121	6 167	5 876	5 431	4 700
100	-	7 292	6 972	6 840	6 829	6 899	6 808	6 535	6 024
110	-	-	8 019	7 756	7 664	7 702	7 736	7 598	7 270
130	-	-	-	10 249	9 882	9 688	9 750	9 772	9 699

**Current consumption in A**

45	-	-	-	-	-	-	-	-	-
60	-	14.16	14.08	14.13	14.11	13.51	10.63	-	-
70	-	15.54	15.14	15.05	15.06	14.85	13.10	11.14	-
90	-	20.59	19.14	18.35	18.01	17.93	17.57	16.84	15.48
100	-	24.43	22.25	20.89	20.17	19.84	19.75	19.42	18.64
110	-	-	26.21	24.15	22.90	22.10	22.01	21.94	21.59
130	-	-	-	33.14	30.41	28.05	27.10	27.13	27.22

**Mass flow in lbs/h**

45	-	-	-	-	-	-	-	-	-
60	-	431	560	708	876	1 177	1 686	-	-
70	-	413	547	699	873	1 182	1 701	2 016	-
90	-	359	501	661	843	1 165	1 704	2 028	2 394
100	-	322	467	631	816	1 144	1 690	2 019	2 389
110	-	-	426	592	781	1 113	1 666	1 999	2 372
130	-	-	-	489	682	1 022	1 586	1 924	2 304

**Energy Efficiency Ratio (E.E.R.)**

45	-	-	-	-	-	-	-	-	-
60	-	8.95	11.69	14.91	18.94	28.24	62.08	-	-
70	-	7.33	9.84	12.67	15.99	22.81	41.41	64.57	-
90	-	4.47	6.54	8.82	11.35	15.84	24.77	32.14	44.12
100	-	3.28	5.09	7.12	9.36	13.22	20.20	25.33	32.75
110	-	-	3.82	5.58	7.56	10.92	16.61	20.47	25.59
130	-	-	-	3.07	4.51	7.02	11.09	13.58	16.56

**Nominal performance at to = 45 °F, tc = 130 °F**

Cooling capacity	97 037	Btu/h	Current consumption	27.18	A
Power input	9 725	W	Mass flow	1 432	lbs/h
E.E.R.	9.98				

**Pressure switch settings**

Maximum HP switch setting	634	psi(g)
Minimum LP switch setting	22	psi(g)
LP pump down setting	22	psi(g)

T 0 : Evaporating temperature at dew point

T C : Condensing temperature at dew point

Rating conditions : Superheat = 20 °F , Subcooling = 15 °F

Tolerance according EN12900

**Sound power data**

Sound power level	dB(A)
With acoustic hood	dB(A)

Danfoss can accept no responsibility for possible errors in catalogues, brochures and other printed material. Danfoss reserves the right to alter its products without notice.  
This also applies to products already on order provided that such alternations can be made without subsequential changes being necessary in specifications already agreed.  
All trademarks in this material are property of the respective companies. Danfoss and the Danfoss logotype and Performer are trademarks of Danfoss A/S. All rights reserved.

**Performance data at 90 Hz, ARI rating conditions**
**R410A**

Cond. temp. in °F (to)	Evaporating temperature in °F (to)								
	-25	-15	-5	5	15	30	50	60	70

**Cooling capacity in Btu/h**

45	-	-	-	-	-	-	-	-	-
60	-	41 276	54 065	69 091	86 681	118 591	173 178	-	-
70	-	38 043	50 811	65 709	83 066	114 428	167 912	200 393	-
90	-	30 381	42 781	57 099	73 662	103 438	154 065	184 799	219 587
100	-	26 089	38 142	52 006	68 010	96 748	145 620	175 319	208 964
110	-	-	33 178	46 480	61 816	89 353	136 253	164 807	197 201
130	-	-	-	34 400	48 074	72 721	115 026	140 964	170 531

**Power input in W**

45	-	-	-	-	-	-	-	-	-
60	-	4 673	4 696	4 717	4 668	4 314	2 960	-	-
70	-	5 230	5 220	5 259	5 278	5 121	4 206	3 293	-
90	-	6 742	6 549	6 506	6 544	6 605	6 334	5 894	5 161
100	-	7 785	7 442	7 300	7 289	7 371	7 304	7 043	6 538
110	-	-	8 548	8 267	8 168	8 212	8 272	8 150	7 834
130	-	-	-	10 899	10 507	10 300	10 379	10 417	10 363

**Current consumption in A**

45	-	-	-	-	-	-	-	-	-
60	-	15.44	15.24	15.19	15.11	14.46	11.59	-	-
70	-	16.82	16.35	16.20	16.17	15.94	14.21	12.29	-
90	-	21.79	20.35	19.57	19.26	19.22	18.94	18.24	16.92
100	-	25.56	23.43	22.13	21.47	21.21	21.23	20.95	20.20
110	-	-	27.36	25.40	24.24	23.56	23.61	23.59	23.27
130	-	-	-	34.41	31.85	29.70	28.97	29.06	29.20

**Mass flow in lbs/h**

45	-	-	-	-	-	-	-	-	-
60	-	457	593	748	926	1 244	1 785	-	-
70	-	439	580	740	923	1 249	1 800	2 134	-
90	-	387	535	703	895	1 234	1 803	2 147	2 535
100	-	350	502	673	868	1 213	1 790	2 138	2 530
110	-	-	462	636	833	1 183	1 767	2 118	2 514
130	-	-	-	534	736	1 093	1 687	2 044	2 446

**Energy Efficiency Ratio (E.E.R.)**

45	-	-	-	-	-	-	-	-	-
60	-	8.83	11.51	14.65	18.57	27.49	58.50	-	-
70	-	7.27	9.73	12.49	15.74	22.34	39.92	60.85	-
90	-	4.51	6.53	8.78	11.26	15.66	24.32	31.35	42.55
100	-	3.35	5.13	7.12	9.33	13.13	19.94	24.89	31.96
110	-	-	3.88	5.62	7.57	10.88	16.47	20.22	25.17
130	-	-	-	3.16	4.58	7.06	11.08	13.53	16.46

**Nominal performance at to = 45 °F, tc = 130 °F**

Cooling capacity	103 315	Btu/h	Current consumption	29.00	A
Power input	10 347	W	Mass flow	1 524	lbs/h
E.E.R.	9.99				

**Pressure switch settings**

Maximum HP switch setting	634	psi(g)
Minimum LP switch setting	22	psi(g)
LP pump down setting	22	psi(g)

T 0 : Evaporating temperature at dew point

T C : Condensing temperature at dew point

Rating conditions : Superheat = 20 °F , Subcooling = 15 °F

Tolerance according EN12900

**Sound power data**

Sound power level	85	dB(A)
With acoustic hood	76	dB(A)

Danfoss can accept no responsibility for possible errors in catalogues, brochures and other printed material. Danfoss reserves the right to alter its products without notice.  
This also applies to products already on order provided that such alterations can be made without subsequent changes being necessary in specifications already agreed.  
All trademarks in this material are property of the respective companies. Danfoss and the Danfoss logotype and Performer are trademarks of Danfoss A/S. All rights reserved.

**Performance data at 95 Hz, ARI rating conditions**
**R410A**

Cond. temp. in °F (to)	Evaporating temperature in °F (to)								
	-25	-15	-5	5	15	30	50	60	70

**Cooling capacity in Btu/h**

45	-	-	-	-	-	-	-	-	-
60	-	43 621	57 018	72 790	91 292	124 940	182 663	-	-
70	-	40 340	53 698	69 317	87 550	120 577	177 068	211 448	-
90	-	32 585	45 537	60 518	77 882	109 171	162 537	195 008	231 809
100	-	28 244	40 827	55 324	72 088	102 262	153 735	185 086	220 652
110	-	-	35 786	49 689	65 744	94 636	143 996	174 117	208 338
130	-	-	-	37 359	51 665	77 499	121 974	149 306	180 506

**Power input in W**

45	-	-	-	-	-	-	-	-	-
60	-	5 006	5 031	5 058	5 016	4 669	3 306	-	-
70	-	5 594	5 582	5 625	5 652	5 508	4 600	3 680	-
90	-	7 190	6 982	6 934	6 976	7 052	6 807	6 376	5 647
100	-	8 294	7 925	7 770	7 758	7 851	7 814	7 567	7 073
110	-	-	9 094	8 791	8 683	8 732	8 821	8 716	8 417
130	-	-	-	11 572	11 150	10 926	11 020	11 076	11 043

**Current consumption in A**

45	-	-	-	-	-	-	-	-	-
60	-	16.79	16.45	16.30	16.13	15.43	12.59	-	-
70	-	18.17	17.61	17.40	17.33	17.06	15.37	13.50	-
90	-	22.99	21.59	20.84	20.56	20.57	20.36	19.72	18.45
100	-	26.63	24.61	23.40	22.81	22.65	22.78	22.54	21.84
110	-	-	28.45	26.64	25.60	25.08	25.28	25.31	25.04
130	-	-	-	35.58	33.26	31.40	30.92	31.10	31.28

**Mass flow in lbs/h**

45	-	-	-	-	-	-	-	-	-
60	-	483	625	788	975	1 311	1 882	-	-
70	-	466	613	781	973	1 316	1 898	2 252	-
90	-	415	570	745	946	1 302	1 902	2 265	2 676
100	-	379	537	716	920	1 282	1 890	2 257	2 672
110	-	-	498	680	886	1 253	1 867	2 238	2 656
130	-	-	-	580	791	1 165	1 789	2 165	2 589

**Energy Efficiency Ratio (E.E.R.)**

45	-	-	-	-	-	-	-	-	-
60	-	8.71	11.33	14.39	18.20	26.76	55.25	-	-
70	-	7.21	9.62	12.32	15.49	21.89	38.49	57.46	-
90	-	4.53	6.52	8.73	11.16	15.48	23.88	30.58	41.05
100	-	3.41	5.15	7.12	9.29	13.02	19.67	24.46	31.20
110	-	-	3.94	5.65	7.57	10.84	16.32	19.98	24.75
130	-	-	-	3.23	4.63	7.09	11.07	13.48	16.35

**Nominal performance at to = 45 °F, tc = 130 °F**

Cooling capacity	109 648	Btu/h	Current consumption	30.90	A
Power input	10 981	W	Mass flow	1 618	lbs/h
E.E.R.	9.99				

**Pressure switch settings**

Maximum HP switch setting	634	psi(g)
Minimum LP switch setting	22	psi(g)
LP pump down setting	22	psi(g)

T 0 : Evaporating temperature at dew point

T C : Condensing temperature at dew point

Rating conditions : Superheat = 20 °F , Subcooling = 15 °F

Tolerance according EN12900

**Sound power data**

Sound power level	dB(A)
With acoustic hood	dB(A)

Danfoss can accept no responsibility for possible errors in catalogues, brochures and other printed material. Danfoss reserves the right to alter its products without notice.  
This also applies to products already on order provided that such alternations can be made without subsequential changes being necessary in specifications already agreed.  
All trademarks in this material are property of the respective companies. Danfoss and the Danfoss logotype and Performer are trademarks of Danfoss A/S. All rights reserved.

**Performance data at 100 Hz, ARI rating conditions**
**R410A**

Cond. temp. in °F (to)	Evaporating temperature in °F (to)								
	-25	-15	-5	5	15	30	50	60	70

**Cooling capacity in Btu/h**

45	-	-	-	-	-	-	-	-	-
60	-	45 963	59 960	76 472	95 880	131 253	192 105	-	-
70	-	42 639	56 581	72 913	92 015	126 695	186 182	222 459	-
90	-	34 802	48 303	63 943	82 101	114 895	170 987	205 190	244 005
100	-	30 416	43 531	58 658	76 178	107 779	161 843	194 842	232 328
110	-	-	38 420	52 924	69 696	99 938	151 750	183 436	219 483
130	-	-	-	40 363	55 305	82 332	128 978	157 704	190 541

**Power input in W**

45	-	-	-	-	-	-	-	-	-
60	-	5 347	5 374	5 407	5 374	5 039	3 675	-	-
70	-	5 966	5 952	6 000	6 036	5 908	5 014	4 091	-
90	-	7 652	7 426	7 372	7 417	7 509	7 294	6 878	6 157
100	-	8 818	8 422	8 252	8 237	8 342	8 337	8 108	7 630
110	-	-	9 657	9 328	9 209	9 262	9 381	9 296	9 018
130	-	-	-	12 269	11 813	11 566	11 672	11 747	11 738

**Current consumption in A**

45	-	-	-	-	-	-	-	-	-
60	-	18.21	17.73	17.45	17.19	16.41	13.61	-	-
70	-	19.58	18.94	18.65	18.52	18.22	16.57	14.78	-
90	-	24.19	22.85	22.15	21.91	21.98	21.85	21.25	20.05
100	-	27.65	25.77	24.68	24.19	24.15	24.39	24.21	23.55
110	-	-	29.48	27.86	26.99	26.66	27.02	27.11	26.88
130	-	-	-	36.66	34.64	33.15	32.97	33.23	33.46

**Mass flow in lbs/h**

45	-	-	-	-	-	-	-	-	-
60	-	509	657	828	1 024	1 377	1 980	-	-
70	-	493	646	821	1 023	1 383	1 996	2 369	-
90	-	443	604	787	997	1 370	2 001	2 384	2 817
100	-	408	573	759	972	1 351	1 990	2 376	2 813
110	-	-	534	724	940	1 323	1 968	2 357	2 798
130	-	-	-	627	847	1 237	1 892	2 287	2 734

**Energy Efficiency Ratio (E.E.R.)**

45	-	-	-	-	-	-	-	-	-
60	-	8.60	11.16	14.14	17.84	26.05	52.27	-	-
70	-	7.15	9.51	12.15	15.25	21.44	37.14	54.37	-
90	-	4.55	6.50	8.67	11.07	15.30	23.44	29.83	39.63
100	-	3.45	5.17	7.11	9.25	12.92	19.41	24.03	30.45
110	-	-	3.98	5.67	7.57	10.79	16.18	19.73	24.34
130	-	-	-	3.29	4.68	7.12	11.05	13.43	16.23

**Nominal performance at to = 45 °F, tc = 130 °F**

Cooling capacity	116 037	Btu/h	Current consumption	32.89	A
Power input	11 627	W	Mass flow	1 712	lbs/h
E.E.R.	9.98				

**Pressure switch settings**

Maximum HP switch setting	634	psi(g)
Minimum LP switch setting	22	psi(g)
LP pump down setting	22	psi(g)

T 0 : Evaporating temperature at dew point

T C : Condensing temperature at dew point

Rating conditions : Superheat = 20 °F , Subcooling = 15 °F

Tolerance according EN12900

**Sound power data**

Sound power level	dB(A)
With acoustic hood	dB(A)

Danfoss can accept no responsibility for possible errors in catalogues, brochures and other printed material. Danfoss reserves the right to alter its products without notice.  
This also applies to products already on order provided that such alterations can be made without subsequent changes being necessary in specifications already agreed.  
All trademarks in this material are property of the respective companies. Danfoss and the Danfoss logotype and Performer are trademarks of Danfoss A/S. All rights reserved.

**Performance data at 105 Hz, ARI rating conditions**
**R410A**

Cond. temp. in °F (to)	Evaporating temperature in °F (to)								
	-25	-15	-5	5	15	30	50	60	70

**Cooling capacity in Btu/h**

45	-	-	-	-	-	-	-	-	-
60	-	48 301	62 892	80 137	100 443	137 532	201 503	-	-
70	-	44 939	59 460	76 498	96 462	132 784	195 255	-	-
90	-	-	51 080	67 373	86 321	120 608	179 416	-	-
100	-	-	-	62 007	80 280	113 301	169 944	-	-
110	-	-	-	-	73 672	105 260	159 517	-	-
130	-	-	-	-	-	-	-	-	-

**Power input in W**

45	-	-	-	-	-	-	-	-	-
60	-	5 696	5 725	5 766	5 743	5 423	4 066	-	-
70	-	6 347	6 331	6 383	6 429	6 320	5 447	-	-
90	-	-	7 880	7 819	7 867	7 976	7 797	-	-
100	-	-	-	8 745	8 725	8 841	8 872	-	-
110	-	-	-	-	9 747	9 802	9 952	-	-
130	-	-	-	-	-	-	-	-	-

**Current consumption in A**

45	-	-	-	-	-	-	-	-	-
60	-	19.71	19.06	18.64	18.27	17.41	14.67	-	-
70	-	21.06	20.32	19.96	19.77	19.41	17.81	-	-
90	-	-	24.14	23.51	23.32	23.44	23.40	-	-
100	-	-	-	25.98	25.61	25.71	26.08	-	-
110	-	-	-	-	28.41	28.30	28.85	-	-
130	-	-	-	-	-	-	-	-	-

**Mass flow in lbs/h**

45	-	-	-	-	-	-	-	-	-
60	-	535	690	868	1 073	1 443	2 077	-	-
70	-	519	679	862	1 072	1 449	2 093	-	-
90	-	-	639	830	1 048	1 438	2 100	-	-
100	-	-	-	803	1 025	1 420	2 089	-	-
110	-	-	-	-	993	1 393	2 068	-	-
130	-	-	-	-	-	-	-	-	-

**Energy Efficiency Ratio (E.E.R.)**

45	-	-	-	-	-	-	-	-	-
60	-	8.48	10.98	13.90	17.49	25.36	49.56	-	-
70	-	7.08	9.39	11.98	15.00	21.01	35.85	-	-
90	-	-	6.48	8.62	10.97	15.12	23.01	-	-
100	-	-	-	7.09	9.20	12.82	19.15	-	-
110	-	-	-	-	7.56	10.74	16.03	-	-
130	-	-	-	-	-	-	-	-	-

**Nominal performance at to = 45 °F, tc = 130 °F**

Cooling capacity	-	Btu/h	Current consumption	-	A
Power input	-	W	Mass flow	-	lbs/h
E.E.R.	-				

**Pressure switch settings**

Maximum HP switch setting	634	psi(g)
Minimum LP switch setting	22	psi(g)
LP pump down setting	22	psi(g)

T 0 : Evaporating temperature at dew point

T C : Condensing temperature at dew point

Rating conditions : Superheat = 20 °F , Subcooling = 15 °F

Tolerance according EN12900

**Sound power data**

Sound power level	dB(A)
With acoustic hood	dB(A)

Danfoss can accept no responsibility for possible errors in catalogues, brochures and other printed material. Danfoss reserves the right to alter its products without notice.  
This also applies to products already on order provided that such alternations can be made without subsequential changes being necessary in specifications already agreed.  
All trademarks in this material are property of the respective companies. Danfoss and the Danfoss logotype and Performer are trademarks of Danfoss A/S. All rights reserved.

**Performance data at 110 Hz, ARI rating conditions**
**R410A**

Cond. temp. in °F (to)	Evaporating temperature in °F (to)								
	-25	-15	-5	5	15	30	50	60	70

**Cooling capacity in Btu/h**

45	-	-	-	-	-	-	-	-	-
60	-	50 635	65 815	83 785	104 981	143 777	210 857	-	-
70	-	47 239	62 333	80 072	100 890	138 842	204 287	-	-
90	-	-	53 867	70 810	90 540	126 311	187 822	-	-
100	-	-	-	65 373	84 393	118 826	178 039	-	-
110	-	-	-	-	77 674	110 602	167 296	-	-
130	-	-	-	-	-	-	-	-	-

**Power input in W**

45	-	-	-	-	-	-	-	-	-
60	-	6 054	6 086	6 135	6 123	5 821	4 479	-	-
70	-	6 738	6 718	6 775	6 832	6 745	5 900	-	-
90	-	-	8 345	8 276	8 325	8 453	8 314	-	-
100	-	-	-	9 249	9 223	9 350	9 421	-	-
110	-	-	-	-	10 296	10 351	10 536	-	-
130	-	-	-	-	-	-	-	-	-

**Current consumption in A**

45	-	-	-	-	-	-	-	-	-
60	-	21.29	20.45	19.88	19.39	18.42	15.76	-	-
70	-	22.60	21.77	21.32	21.06	20.64	19.10	-	-
90	-	-	25.45	24.90	24.77	24.97	25.01	-	-
100	-	-	-	27.31	27.08	27.33	27.83	-	-
110	-	-	-	-	29.86	30.00	30.74	-	-
130	-	-	-	-	-	-	-	-	-

**Mass flow in lbs/h**

45	-	-	-	-	-	-	-	-	-
60	-	560	722	907	1 122	1 509	2 173	-	-
70	-	546	712	902	1 121	1 516	2 190	-	-
90	-	-	674	872	1 099	1 506	2 198	-	-
100	-	-	-	846	1 077	1 490	2 189	-	-
110	-	-	-	-	1 047	1 464	2 169	-	-
130	-	-	-	-	-	-	-	-	-

**Energy Efficiency Ratio (E.E.R.)**

45	-	-	-	-	-	-	-	-	-
60	-	8.36	10.81	13.66	17.15	24.70	47.08	-	-
70	-	7.01	9.28	11.82	14.77	20.58	34.63	-	-
90	-	-	6.45	8.56	10.88	14.94	22.59	-	-
100	-	-	-	7.07	9.15	12.71	18.90	-	-
110	-	-	-	-	7.54	10.68	15.88	-	-
130	-	-	-	-	-	-	-	-	-

**Nominal performance at to = 45 °F, tc = 130 °F**

Cooling capacity	-	Btu/h	Current consumption	-	A
Power input	-	W	Mass flow	-	lbs/h
E.E.R.	-				

**Pressure switch settings**

Maximum HP switch setting	634	psi(g)
Minimum LP switch setting	22	psi(g)
LP pump down setting	22	psi(g)

T 0 : Evaporating temperature at dew point

T C : Condensing temperature at dew point

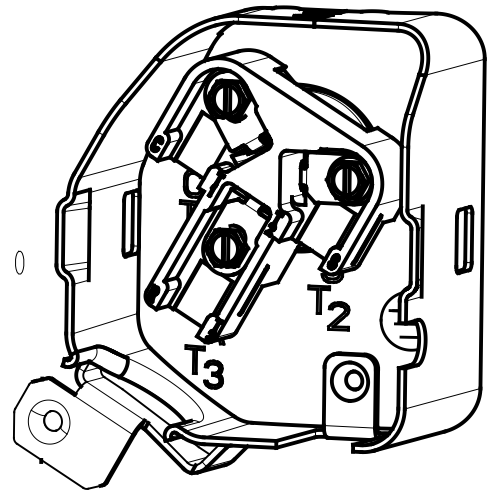
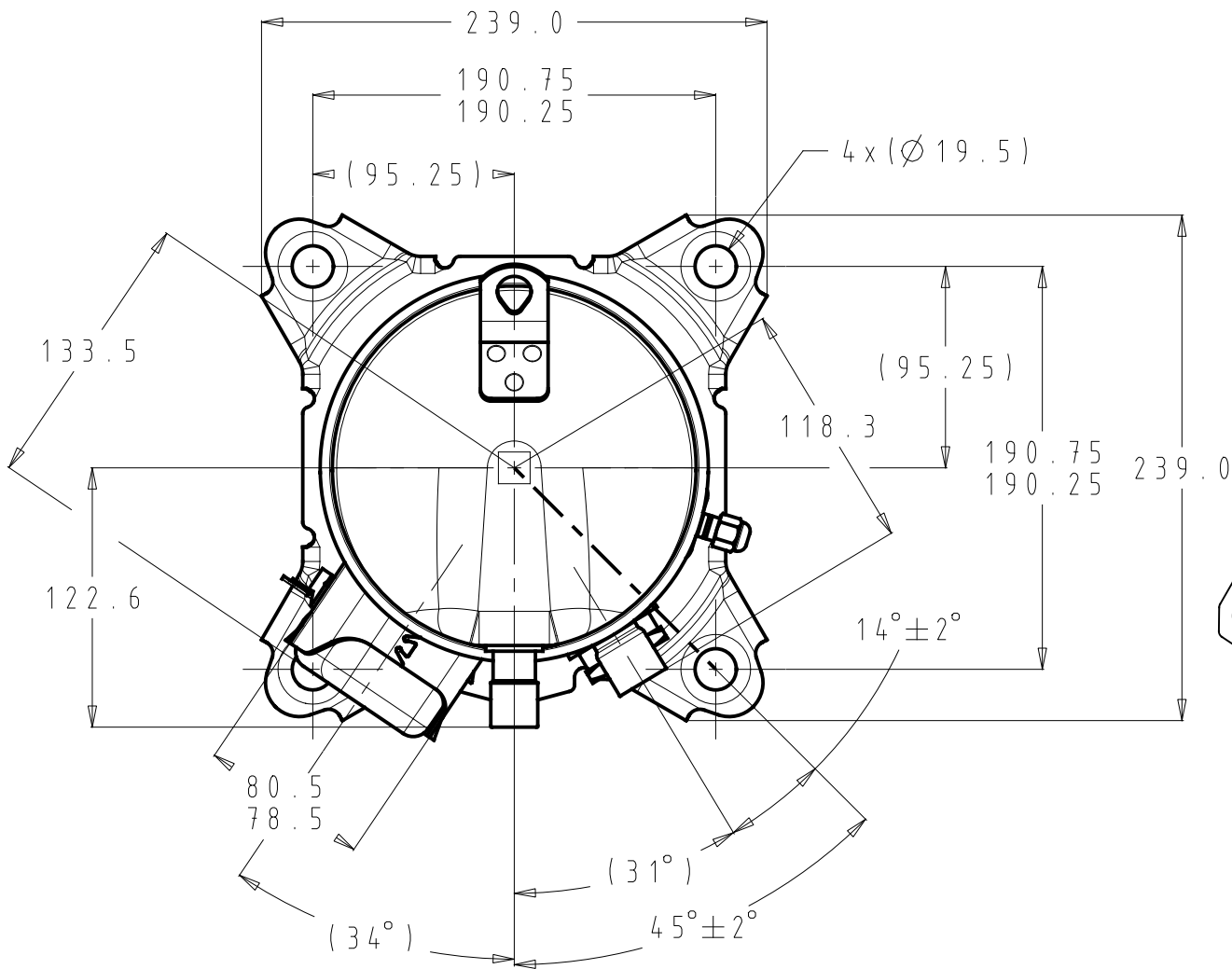
Rating conditions : Superheat = 20 °F , Subcooling = 15 °F

Tolerance according EN12900

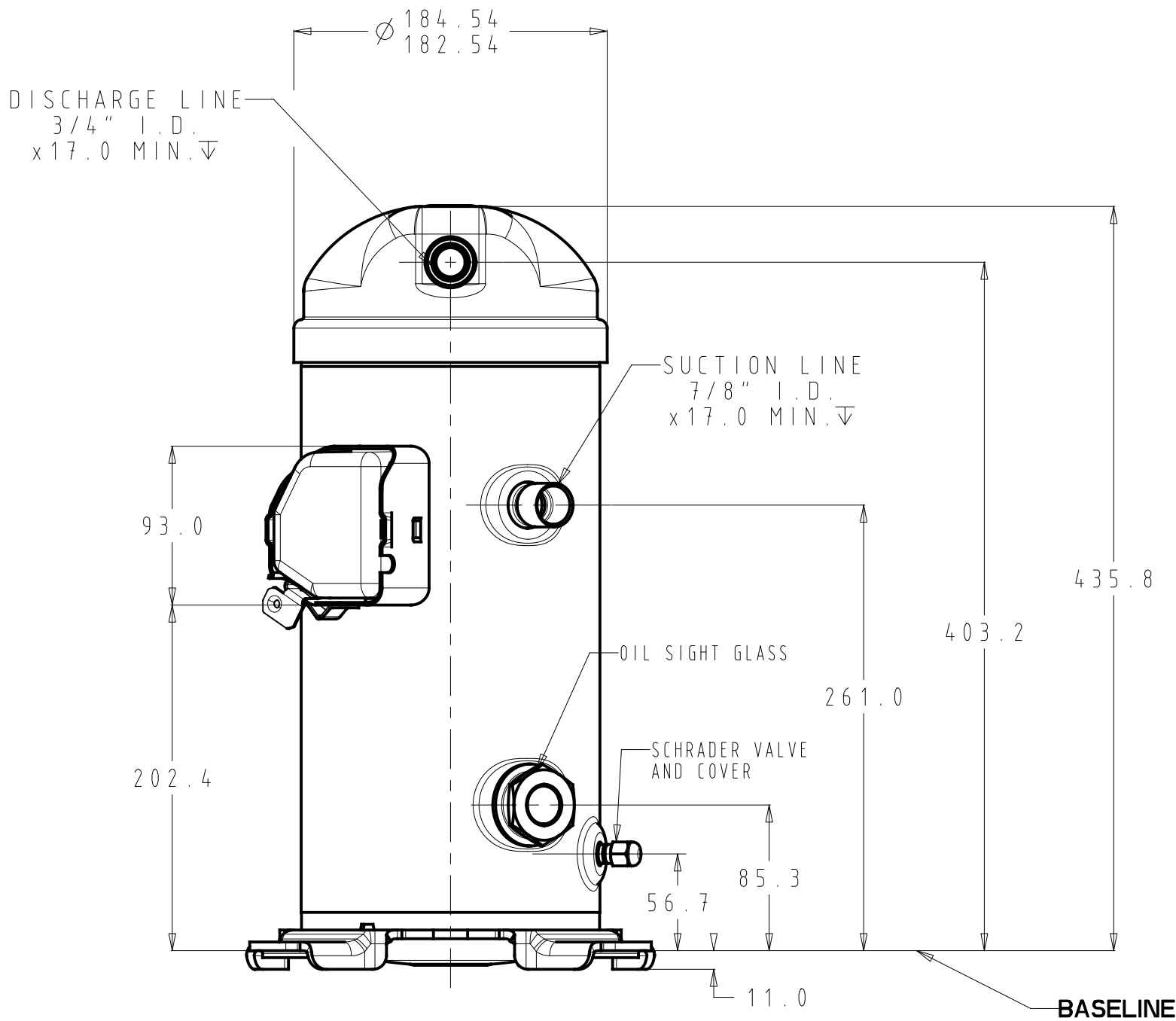
**Sound power data**

Sound power level	dB(A)
With acoustic hood	dB(A)

Danfoss can accept no responsibility for possible errors in catalogues, brochures and other printed material. Danfoss reserves the right to alter its products without notice.  
This also applies to products already on order provided that such alternations can be made without subsequential changes being necessary in specifications already agreed.  
All trademarks in this material are property of the respective companies. Danfoss and the Danfoss logotype and Performer are trademarks of Danfoss A/S. All rights reserved.



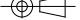


SCALE 3/5



BASELINE

Part number

8590007P01A

General Tolerances Table	Drawing Status:			Production print				
				Surface Area (m <sup>2</sup> )				
				Estimated Mass (Kg)				
.X=±3.0 .XX=±N/A .XXX=±N/A ANG°=±N/A	C	ECR-2018-10061	15-06-2018	Projection	Scale	Size		
	B	ECR-2018-10002	06-06-2018		1/3	B		
	A	ECR-2016-8465	10-10-2015					
	Revision	ECR Number	Date					
Roughness (µm) NA	Designer	Ma Hongtao		Designation VZH052/065 OUTLINE 				
	Approval	Zhao Yanbo						
ANSI Y14.5M-1994	Confidential: Property of Danfoss Commercial Compressors. Not to be handed over to copied or used by third party. Two or three dimensional reproduction of contents to be authorized by Danfoss CC.					SHEET 1 of 1		C
						C.2	8590007	