



Sequence Valves Technical Information

Kick Down Type

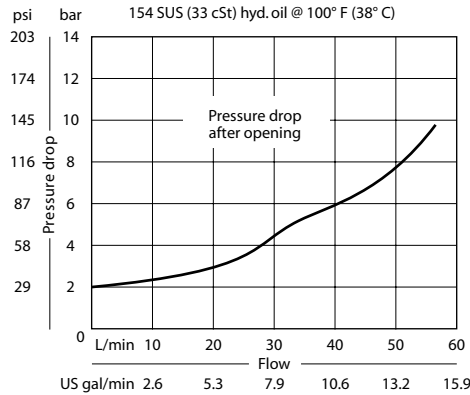
CP240-22

OPERATION

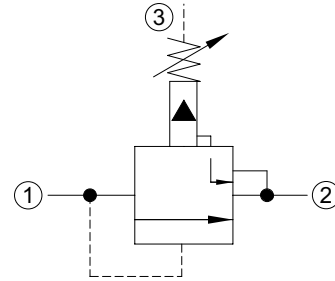
This is a "kick-down" type sequence valve that blocks flow from 1 to 2 until sufficient pressure is applied at 1. Once open, the valve remains open until flow is completely shut off.

SPECIFICATIONS

Theoretical performance



Schematic



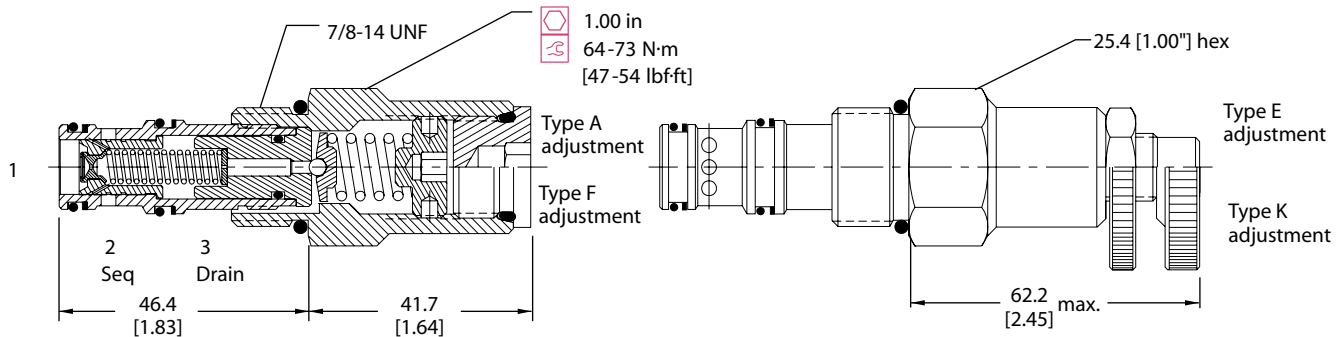
Specifications

Rated pressure	350 bar [5075 psi]
Rated flow at 7 bar [100 psi]	45 l/min [12 US gal/min]
Weight	0.19 kg [0.42 lb]
Cavity	SDC10-3

DIMENSIONS

mm [in]

Cross-sectional view



ORDERING INFORMATION

CP240 - 22 - B - 6S - A - C - 150

<p>Seals</p> <p>B = Buna-N V = Viton</p>	<p>Seal kit</p> <p>120027 120028</p>	<p>Crack pressure</p> <p>Code x 10 = psi Example: 150 = 1500 psi</p>																								
<p>Housing and ports</p> <p>0 = No Housing SE3B = Al, 3/8 BSP SE4B = Al, 1/2 BSP 6S = Al, #6 SAE 8S = Al, #8 SAE Other housings available</p>	<p>Housing P/N</p> <p>No Housing SDC10-3-SE-3B SDC10-3-SE-4B CP10-3-6S CP10-3-8S</p>	<p>Pressure range</p> <table border="0"> <tr> <td>A =</td> <td>14-55</td> <td>[psi]</td> </tr> <tr> <td>Standard</td> <td>28</td> <td>[400]</td> </tr> <tr> <td>B =</td> <td>21-103</td> <td>[300-1500]</td> </tr> <tr> <td>Standard</td> <td>69</td> <td>[1000]</td> </tr> <tr> <td>C =</td> <td>28-207</td> <td>[400-3000]</td> </tr> <tr> <td>Standard</td> <td>103</td> <td>[1500]</td> </tr> <tr> <td>D =</td> <td>28-345</td> <td>[400-5000]</td> </tr> <tr> <td>Standard</td> <td>103</td> <td>[1500]</td> </tr> </table>	A =	14-55	[psi]	Standard	28	[400]	B =	21-103	[300-1500]	Standard	69	[1000]	C =	28-207	[400-3000]	Standard	103	[1500]	D =	28-345	[400-5000]	Standard	103	[1500]
A =	14-55	[psi]																								
Standard	28	[400]																								
B =	21-103	[300-1500]																								
Standard	69	[1000]																								
C =	28-207	[400-3000]																								
Standard	103	[1500]																								
D =	28-345	[400-5000]																								
Standard	103	[1500]																								
<p>Adjustment option</p> <p>A = Internal E = External F = Tamper resistant K = Knob</p>																										