



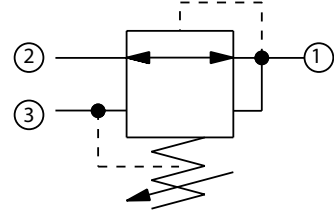
Pressure Reducing Valves Technical Information

Pressure Reducing, Relieving, Direct Acting CP230-1

OPERATION

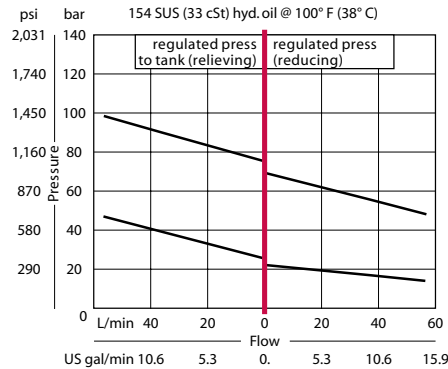
This is a direct-acting pressure reducing/relieving valve.

Schematic



SPECIFICATIONS

Theoretical performance



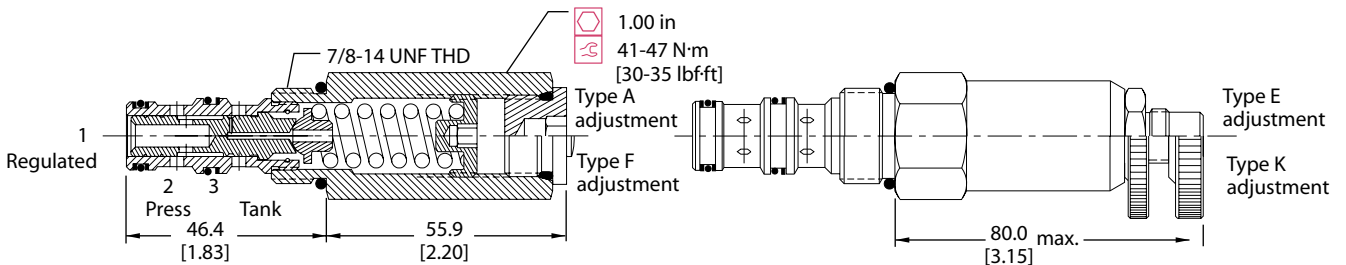
Specifications

Rated pressure	210 bar [3000 psi]
Rated flow at 7 bar [100 psi]	40 l/min [11 US gal/min]
Weight	0.23 kg [0.51 lb]
Cavity	SDC10-3

DIMENSIONS

mm [in]

Cross-sectional view



ORDERING INFORMATION

CP230 - 1 - B - 6S - A - C - 100

Seals
B = Buna-N
V = Viton

Seal kit
120570
120571

Housing and ports
0 = No Housing
SE3B = Al, 3/8 BSP
SE4B = Al, 1/2 BSP
6S = Al, #6 SAE
8S = Al, #8 SAE
Other housings available

Housing P/N
No Housing
SDC10-3-SE-3B
SDC10-3-SE-4B
CP10-3-6S
CP10-3-8S

Pressure setting
Code x 10psi (0.69 bar)
Example: 100 = 1000 psi (70 bar)

Pressure range		bar	[psi]
A =	Std. setting	4-28	[50-400]
B =	Std. setting	5-55	[75-800]
C =	Std. setting	28	[400]
D =	Std. setting	69	[1000]
E =	Std. setting	7-97	[100-1400]
F =	Std. setting	69	[1000]
G =	Std. setting	34-166	[500-2400]
H =	Std. setting	103	[1500]

Adjustment option
A = Internal
E = External
F = Tamper resistant
K = Knob