



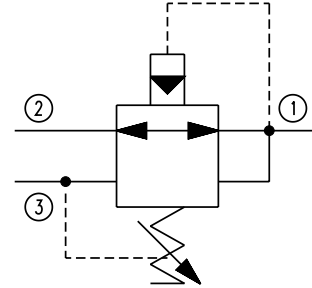
Pressure Reducing Valves Technical Information

Pressure Reducing, Relieving, Pilot Operated CP231-3

OPERATION

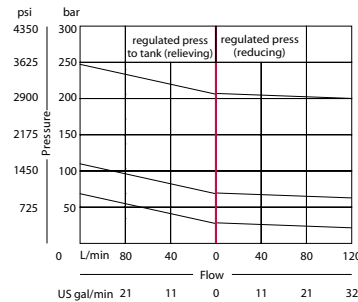
This is a pilot-operated pressure reducing/relieving valve.

Schematic



SPECIFICATIONS

Theoretical performance



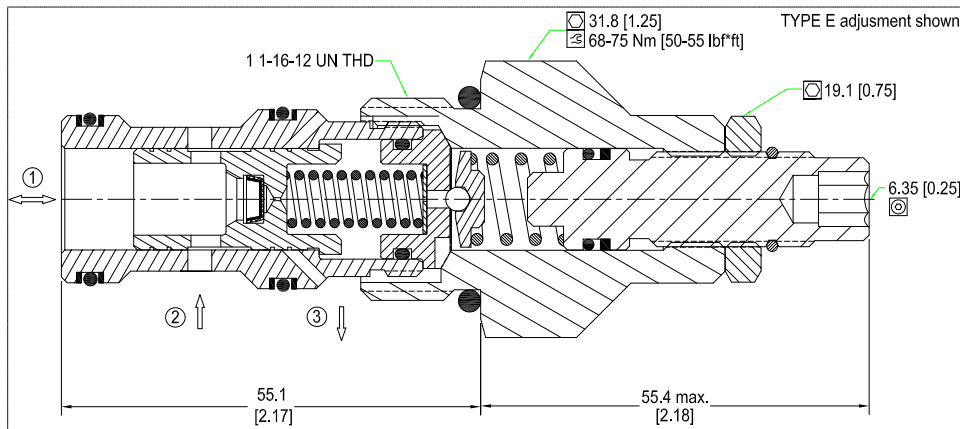
Specifications

Rated pressure	350 bar [5000 psi]
Rated flow at 7 bar [100 psi]	115 l/min [30 US gal/min]
Weight	0.27 kg [0.60 lb]
Cavity	CP12-3S

DIMENSIONS

mm [in]

Cross-sectional view



ORDERING INFORMATION

CP231-3-B-10S-A-A-050

Seals	Seal kit	Pressure range	Pressure setting
B = Buna-N	120335	A = 14-55 bar [200-800 psi]	Code x 10psi (0.69 bar)
V = Viton	120336	B = 21-103 bar [300-1500 psi]	Example: 050 = 500 psi (34 bar)
		C = 27-207 bar [400-3000 psi]	
		D = 27-345 bar [400-5000 psi]	
		Adjustment options	Housing and ports
		A = Internal	0 = No Housing
		F = Tamper Resistant	4B = Al, 1/2 BSP
		E = External	6B = Al, 3/4 BSP
		K = Knob	10S = Al, #10 SAE
			12S = Al, #12 SAE
			Other housings available
			Housing P/N
			No Housing
			CP12-3S-4B/2B
			CP12-3S-6B/2B
			CP12-3S-10S/4S
			CP12-3S-12S/4S