

Proportional Valves

XMP 06

Proportional Relief Valve, Spool Type, Pilot Operated, Normally Open

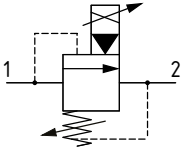
315 bar [4500 psi] • 50 l/min [13 US gpm]



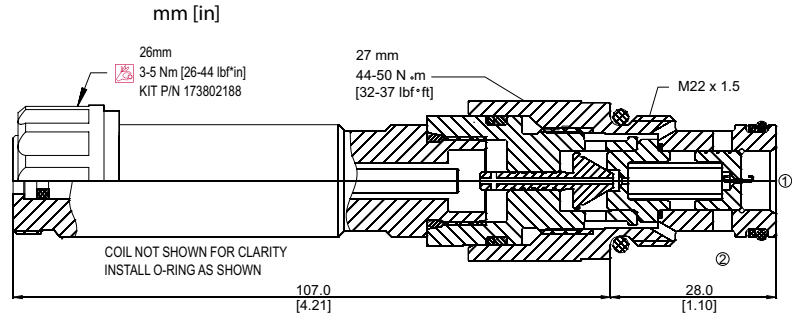
DESCRIPTION AND OPERATION

This is a pilot operated, spool type, normally open, proportional relief valve. In the de-energized condition, the pressure setting will be at a minimum. As current is applied to the coil, the pressure setting of the valve will increase proportionally. This valve is ideal for system pressure control where flows may vary.

SCHEMATIC



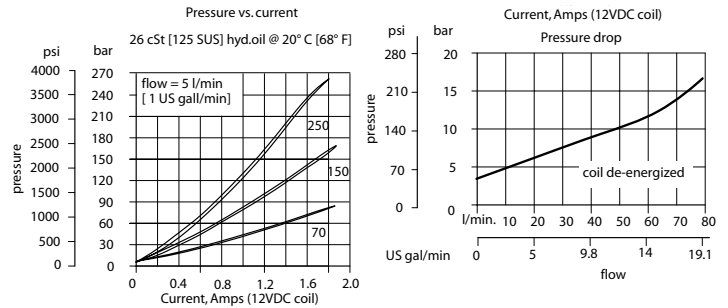
DIMENSIONS



PERFORMANCE DATA

Rated pressure	315 bar [4500 psi]
Rated Flow	50 l/min [13 US gpm]
Maximum Hysteresis	3%
Threshold current	0 A [12 VDC coil] 0 A [24 VDC coil]
Maximum control current	1.8 A [12 VDC coil] 0.9 A [24 VDC coil]
Coil Options	M19P
Weight	0.53 kg [1.17 lb]
Cavity	NCS 06/2

PERFORMANCE CURVES



MODEL CODE

XMP 06 - 70 - 24D - DE - EN - 00 - V

Max Pressure Option

Code	Pressure Range
70	3-70 bar [44-1015 psi]
150	5-150 bar [73-2176 psi]
250	7-250 bar [102-3600 psi]

Coil Voltage

00 - No coil, nut included*
12D - 12 VDC
24D - 24 VDC

*Standard Coil - Plastic coil nut and o-rings (p/n 173802188)

Connector Type

00 - No coil
AJ - AMP Junior
DE - Deutsch
DN - DIN 43650

Manual Override Option

00 - Push Pin
EN - Screw Type

Seal Option

Code	Seal kit
Omit	Buna - N 230000380
V	Viton 230000060

Housing

Code	Ports & Material	Housing Model Code
00	No housing	
DG-6S	AL, #6 SAE	NCS06/2-DG-6S
DG-8S	AL, #8 SAE	NCS06/2-DG-8S
DG-3/8	AL, 3/8 BSP	NCS06/2-DG-3/8
DG-1/2	AL, 1/2 BSP	NCS06/2-DG-1/2

* Aluminum bodies are to be used for pressures less than 210 bar [3000 psi].

* Additional housings available