



Relief Valves Technical Information

Direct Acting

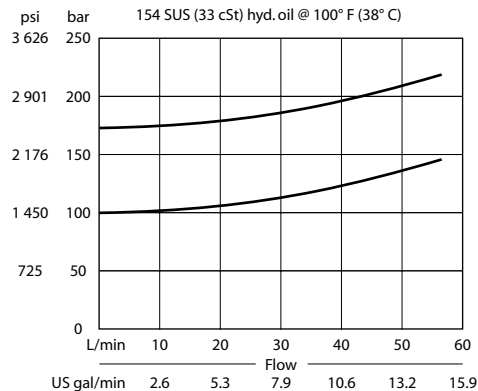
CP200-3

OPERATION

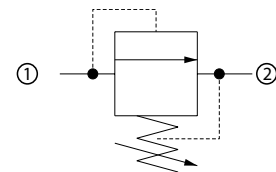
This is a direct-acting poppet type relief valve that relieves from 1 to 2.

SPECIFICATIONS

Theoretical performance



Schematic



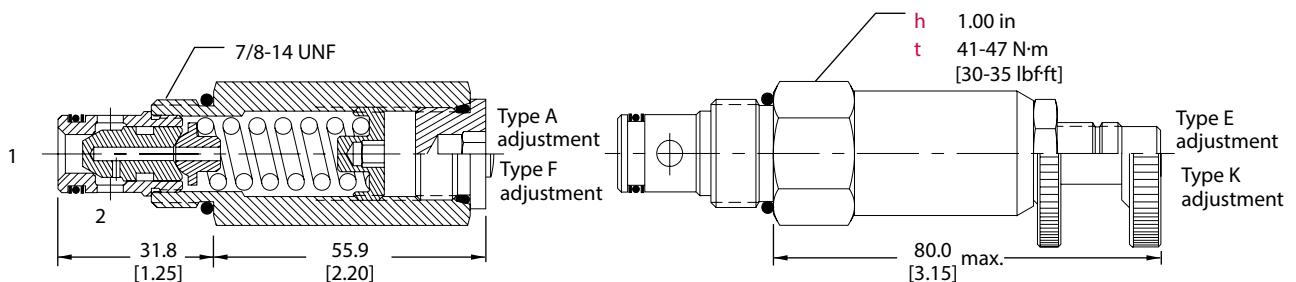
Specifications

Rated pressure	250 bar [3600 psi]
Rated flow	40 l/min [11 US gal/min]
Leakage	10 drops/min @ 80% of pressure setting
Weight	0.21 kg [0.47 lb]
Cavity	SDC10-2

DIMENSIONS

mm [in]

Cross-sectional view



ORDERING INFORMATION

CP200 - 3 - B - 6 S - A - C - 150			
Seals	Seal kit	Crack pressure	
B = Buna-N	120073	Code x 10 = psi	
V = Viton	120074	Example: 150 = 1500 psi	
Housing and ports	Housing P/N	Pressure range	
0 = No Housing	No Housing	A =	7-69 [100-1000]
DG3B = Al, 3/8 BSP	SDC10-2-DG-3B	Standard	28 [400]
DG4B = Al, 1/2 BSP	SDC10-2-DG-4B	B =	17-172 [250-2500]
6S = Al, #6 SAE	CP10-2-6S	Standard	69 [1000]
8S = Al, #8 SAE	CP10-2-8S	C =	41-248 [600-3600]
Other housings available		Standard	103 [1500]
Adjustment option			
A = Internal			
E = External			
F = Tamper resistant			
K = Knob			