



Relief Valves Technical Information

Direct Acting

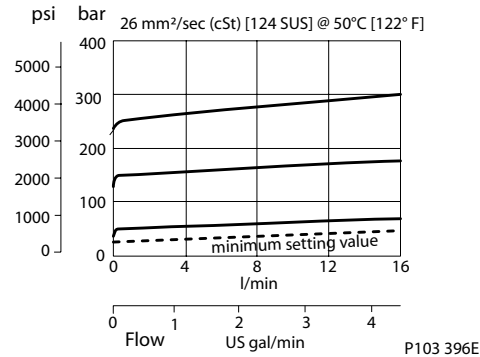
VME 06

OPERATION

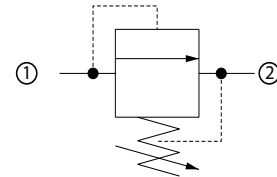
This is a direct-acting, poppet-type relief valve that relieves from 1 to 2. It features a highly damped poppet for smooth and stable response.

SPECIFICATIONS

Theoretical performance



Schematic



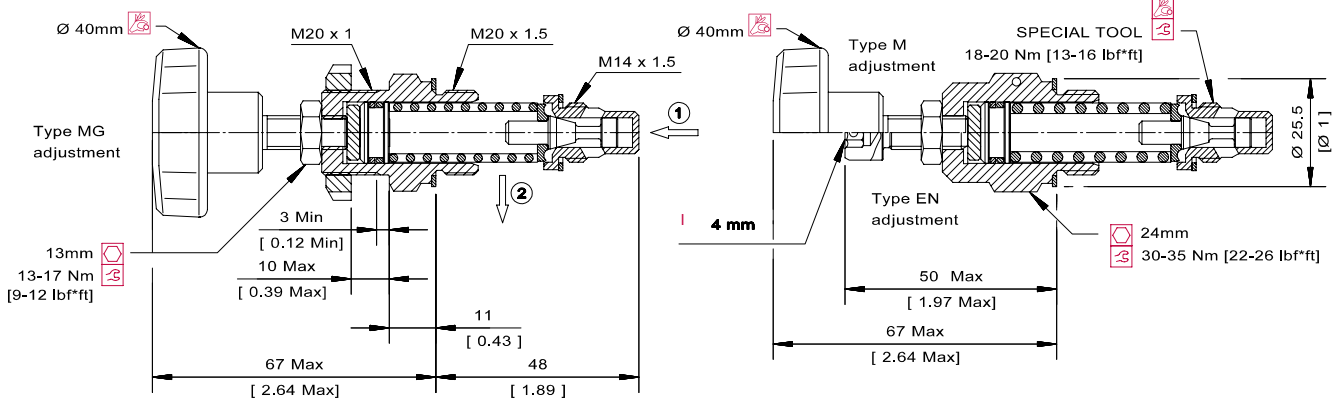
Specifications

Rated pressure	315 bar [4500 psi]
Rated flow	40 l/min [11 US gal/min]
Weight	0.13 kg [0.29 lb]
Cavity	VME06

DIMENSIONS

mm [in]

Cross-sectional view



ORDERING INFORMATION

VME 06 - EN - 2 - DG3/8 - V - XXX			
Adjustment			Seals
EN = External screw			V = Viton seals
M = Handwheel			Omit = Buna-N
MG = Handwheel (panel mounted)			
Setting range		Housing and ports	Housing P/N
1 = 25 - 70 bar [363-1015 psi]		00 = No Housing	No Housing
2 = 35 - 170 bar [508-2466 psi]		DG3/8 = AI, 3/8 BSP	VME06-DG-3/8
3 = 70 - 315 bar [1015-4569 psi]		DG6S = AI, #6 SAE	VME06-DG-6S
		Other housings available	

To order this valve with a specific factory setting, contact your Danfoss ICS representative