



# Relief Valves Technical Information

## Differential Area

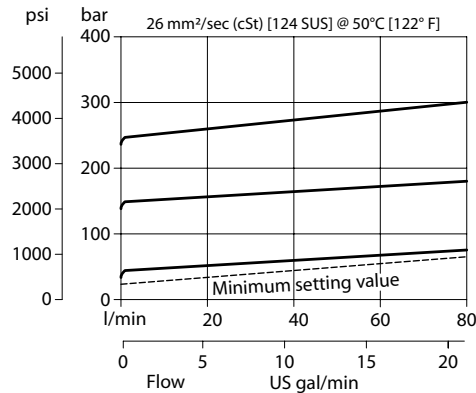
### VSB 06-EN

## OPERATION

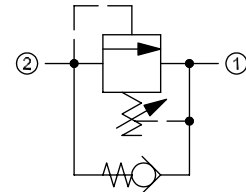
This is a direct-acting, differential area, poppet-type relief valve that relieves from 2 to 1 with an integral free-flow check from 1 to 2.

## SPECIFICATIONS

### Theoretical performance



### Schematic



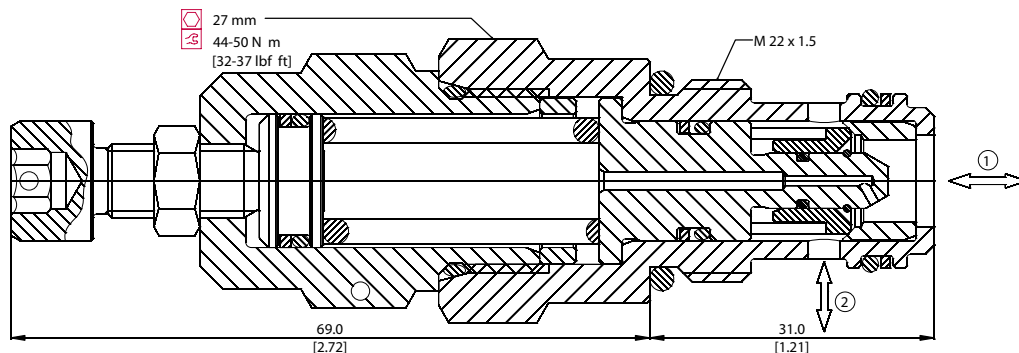
### Specifications

Rated pressure	350 bar [5075 psi]
Rated flow	80 l/min [21 US gal/min]
Weight	0.22 kg [0.49 lb]
Cavity	NCS06/2

## DIMENSIONS

mm [in]

### Cross-sectional view



## ORDERING INFORMATION

VSB 06-EN - 1 - 00 - V - XXX

### Setting range

- 1 = 20 - 80 bar [363 - 2031 psi]
- 2 = 70 - 210 bar [1015 - 3046 psi]
- 3 = 105 - 350 bar [1523 - 5076 psi]

Seals  
V = Viton  
Omit = Buna-N

Housing and ports  
00 = No Housing  
DG3/8 = AL, 3/8 BSP  
DG1/2 = AL, 1/2 BSP  
DG6S = AL, #6 SAE  
DG8S = AL, #8 SAE  
Other housings available

Seal Kit  
230000380  
230000060

Housing P/N  
No Housing  
NCS06/2-DG-3/8  
NCS06/2-DG-1/2  
NCS06/2-DG-6S  
NCS06/2-DG-8S

To order this valve with a specific factory setting, contact your Danfoss ICS representative