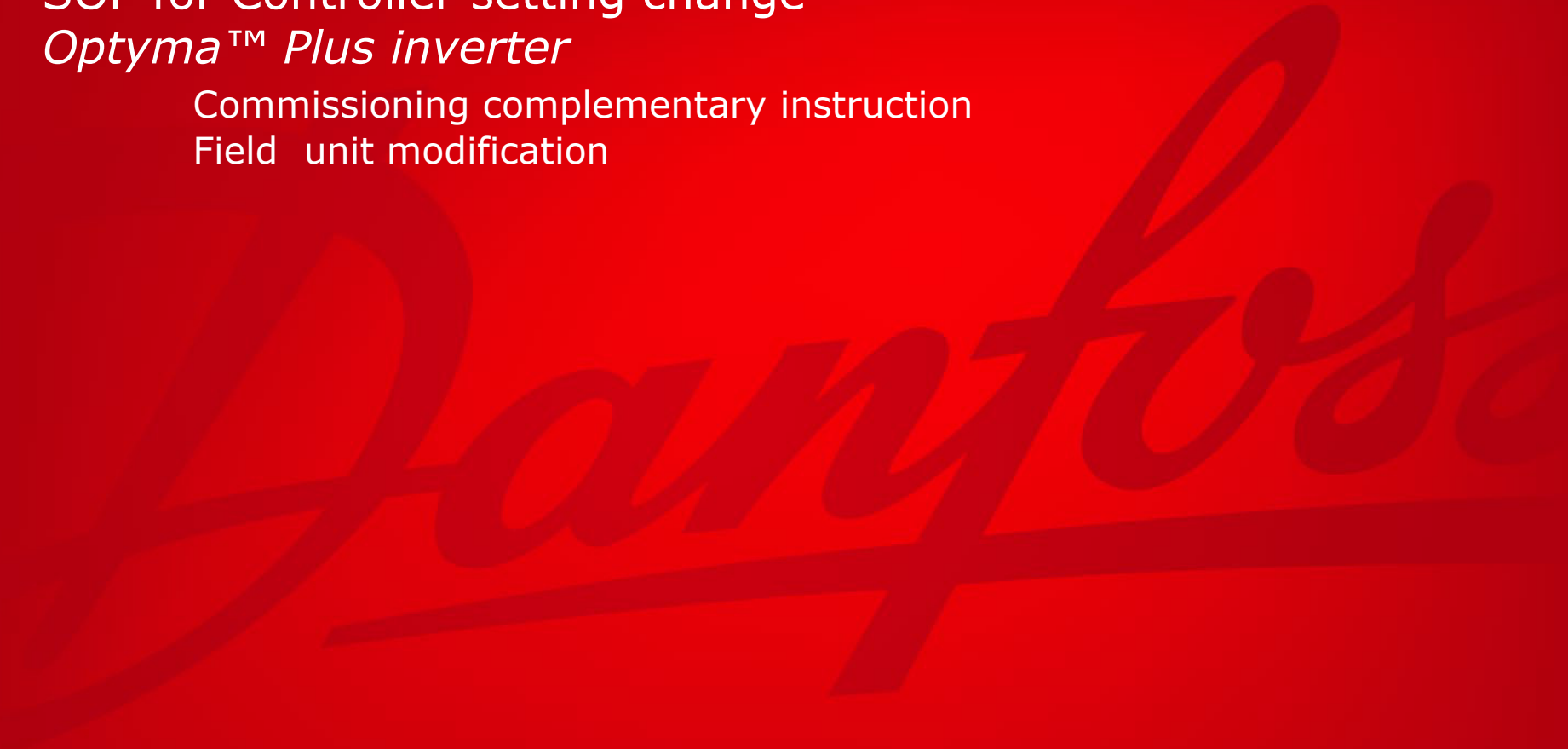


SOP for Controller setting change *Optyma™ Plus inverter*

Commissioning complementary instruction
Field unit modification



Instruction: Inspection/Modification of controller parameter values

Affected Optyma Plus Inverter CU codes

Model

114X4302

114X4316

114X4334

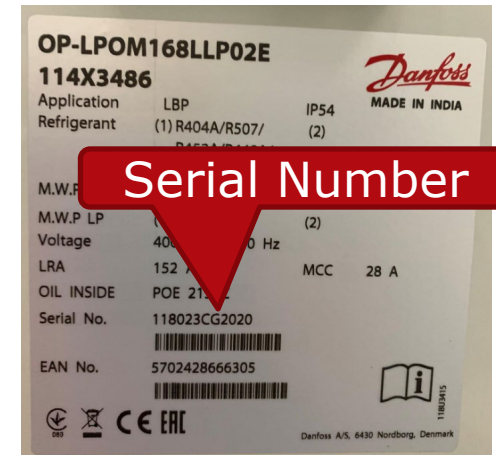
Competent person to look on this unit

1. Hand Gloves and Personnel Protected Equipment
2. Screw driver



Affected serial number:

Check the serial number in silver label on side panel



Stage 1



Before removing the unit ensure to turn off the power supply.

Open the front panel

Remove the screws from Electric Box panel & open the E-Box cover

Stage 2



Press Upper button "to change the parameter or value"

Press Middle button "Set"

Press Lower button "to change the parameter or value"

1. Switch ON power supply, Wait until controller LED's switch ON
Pressure the upper button of controller for 5sec until the parameter appear.

2. Go to r12 with lower button, activate r12 with middle button, change r12 to 0 with lower button, confirm with middle button

3. Pressure the upper button of controller until the "O37" parameter

4. Now press the middle button of controller "Set" to check the "O37" value. (required: 7)
If found "0" then press the upper button of controller until the 7 value appear on display. Now press the middle button of controller "set" to permanently change the value

5. Pressure the upper button of controller until the "C71" parameter appear on display

6. Now press the middle button of controller "Set" to check the "C71" value. (required: 2)
If found "1" then press the upper button of controller until the "2" value appear on display. Now press the middle button of controller "set" to permanently change the value.

7. Ensure the Parameter "C71 : 2" & "O37 : 7", are verified for there respective parameter value.

8. Go to r12 with lower button, activate r12 with middle button, change r12 back to 1 with upper button, confirm with middle button

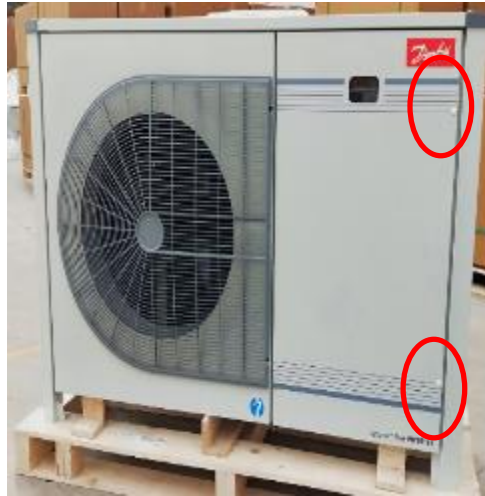
Stage 3



Reassemble Electric Box cover & tighten 2nos of screws



Stage 4



Close the side panel & tighten 2nos of screws