

Flow Control Valves

CP340-1 /1S

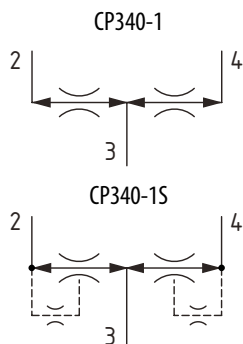
Flow Divider/Combiner, Fixed Ratio, Flow Synchronizing Option

210 bar [3000 psi] • 45 l/min [12 US gpm]

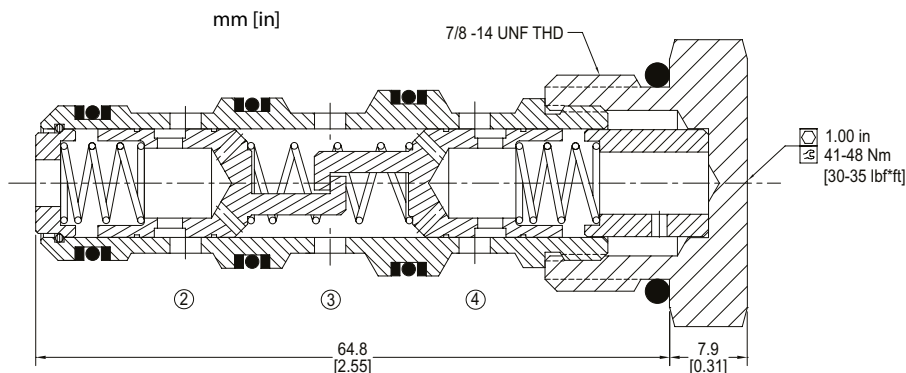
DESCRIPTION AND OPERATION

This is a fixed ratio flow divider/combiner valve. In dividing mode, flow enters port 3 and passes across two fixed orifices in linked spools. If the pressure drop through one orifice is higher than the other, then the spools will move together to restrict the flow in the lower pressure outlet port. This maintains equal pressure drops across the spools, thus maintaining the flow division in the outlet ports. In combining mode, flow will enter ports 2 and 4 pass through the orifices, which causes the spools to move to restrict the higher-pressure inlet and maintain equal pressure drops and equal flow into the valve. The CP340-1S provides synchronizing flow to the opposite port in the event that one port is completely blocked.

SCHEMATIC



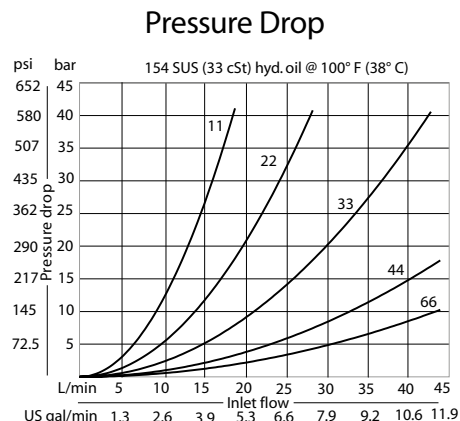
DIMENSIONS



PERFORMANCE DATA

Rated pressure	210 bar [3000 psi]
Rated flow	45 l/min [12 US gpm]
Weight	0.11 kg [0.24 lb]
Cavity	SDC10-4

PERFORMANCE CURVES



MODEL CODE

CP340 - 1 - B - 6S - 44

Flow Synchronization Option

- 1 - Without synchronization
- 1S - With synchronization

Seal Option

Code	Seal Kit
B-Buna-N	120023
V-Viton	120024

Housing

Code	Ports&Material	Housing Model Code
0	No housing	No Housing
3B	3/8 BSP, AL	CP10-4-2B-X1
4B	1/2 BSP, AL	CP10-4-3B-X1
6S	#6 SAE, AL	CP10-4-6S-X1
8S	#8 SAE, AL	CP10-4-8S-X1

* Aluminum bodies are to be used for pressures less than 210 bar [3000 psi].

* Additional housings available

Flow Setting

Code	Flow Ratio	Total Flow
11	1:1	7.6 l/min [2 US gpm]
22	1:1	15 l/min [4 US gpm]
33	1:1	23 l/min [6 US gpm]
36	1:2	34 l/min [9 US gpm]
44	1:1	30 l/min [8 US gpm]
46	2:3	38 l/min [10 US gpm]
63	2:1	34 l/min [9 US gpm]
64	3:2	38 l/min [10 US gpm]
66	1:1	45 l/min [12 US gpm]