

OPERATION

This is a Spool Type, 2-Position, 2-Way, Normally Closed, Pull-Type, 10-size Solenoid Valve. When de-energized, the HSV10-22-02 blocks flow in both directions. When energized, the spool shifts to allow flow in both directions. Follow the "Operating Envelope" limits to ensure shifting of the valve during operation.

APPLICATIONS

These spool-type valves are primarily used in mobile and industrial applications for blocking the flow of a 2-way function, pump unloading or cylinder regeneration. Solenoid spool-type valves are direct acting and respond quickly to coil voltage input. Spool valves will have some leakage due to spool clearance, so if your application requires no leakage at the working port(s), apply a low leakage poppet valve(s), like PO check valve, counterbalance valve, etc., in addition to this solenoid valve.

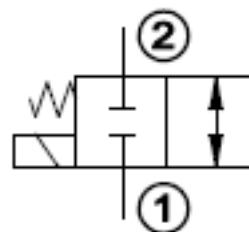
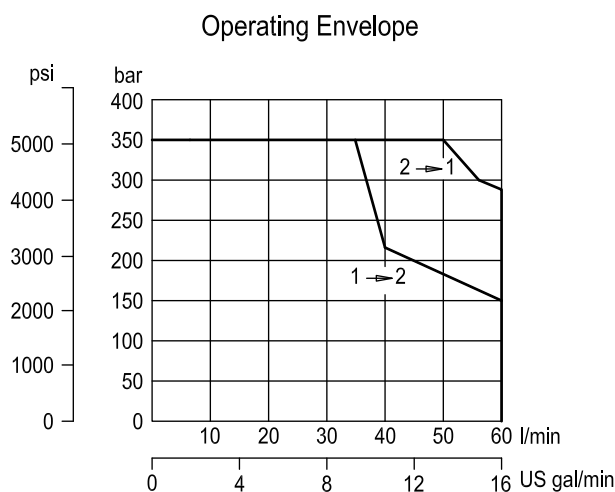
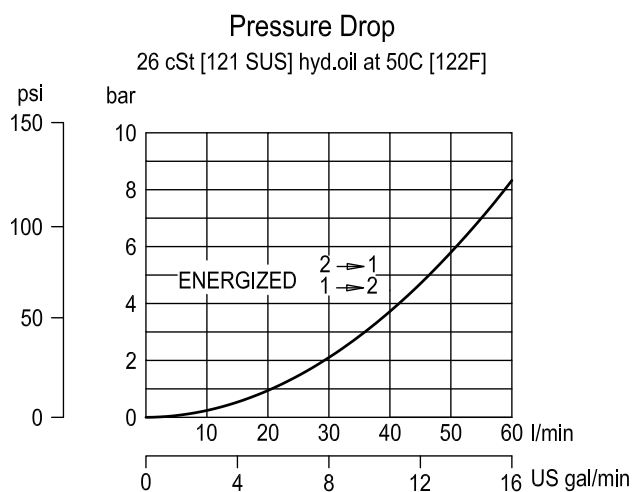


Shown with Standard H16 Coil,
Deutsch Connector

SPECIFICATIONS

| | |
|----------------------------------|-----------------------------|
| Rated pressure* | 350 bar [5075 psi]* |
| Rated flow at 7 bar [100 psi] | 50 l/min [13 US gal/min] |
| Weight | 0.42 kg [0.93 lb] |
| Cavity | SDC10-2 |
| Standard Coil | H16 29 Watt |

* Rated Pressure based on NFPA fatigue test standards (at 1 Million Cycles).

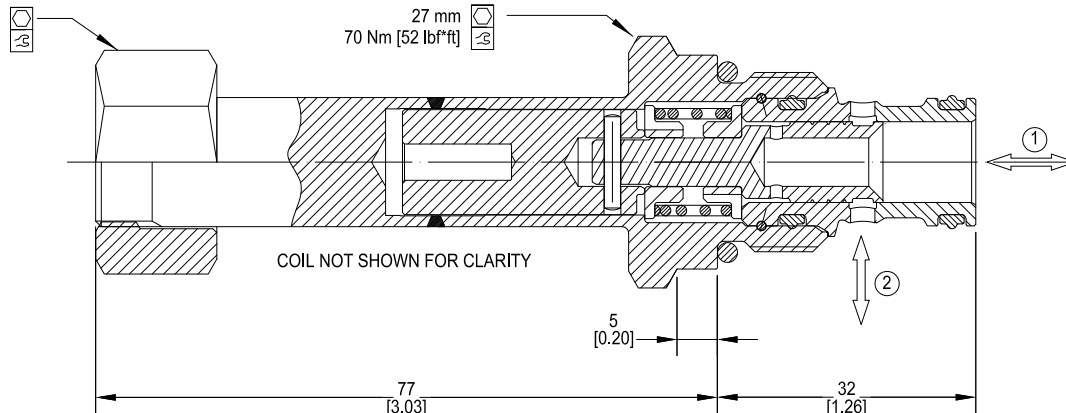
SCHEMATIC**PERFORMANCE CURVES**

DIMENSIONS

mm [in]

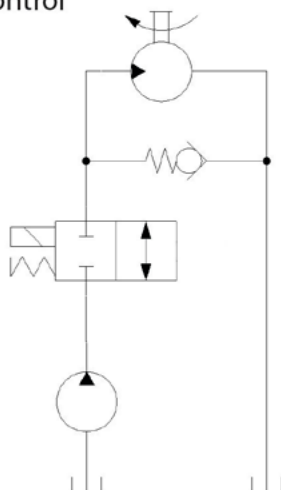
24mm
9-11 Nm
[80-97 lbf*in]
P/N 173804910

Cross-sectional view

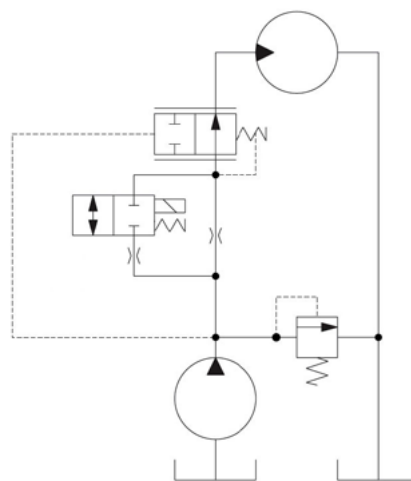


EXAMPLE CIRCUITS

On-Off Motor Control



Two-speed motor circuit



ORDERING INFORMATION

HSV10 - 22 - 02 - H12D - DE - XC - P - 00

High Pressure Solenoid Valve
Normally-Closed, Direct Acting,
10 Size, Spool Type

Coil Voltage

| Code | Description |
|------|-------------|
| 00 | No Coil |
| H12D | 12 VDC |
| H24D | 24 VDC |

Coil Termination

| Code | Description | IP Rating |
|------|--|-----------|
| 00 | No Coil | - |
| FL | Flying Lead | IP69K |
| DE | Deutsch | IP69K |
| AS | AMP Super Seal 1.5 & Metri Pack 150 type 1 | IP69K |
| ASDB | AMP Super Seal with Diode Bidirectional | IP69K |
| DEDB | Deutsch with Diode Bidirectional | IP69K |
| FLDB | Flying Lead with Diode Bidirectional | IP69K |

Bodies

| Code | Ports & Material | Body Nomenclature |
|------|------------------|-------------------|
| 00 | Cartridge Only | No Body |
| S3B | 3/8 BSP, Ductile | SDC10-2-S3B |
| S4B | 1/2 BSP, Ductile | SDC10-2-S4B |
| S6S | #6 SAE, Ductile | SDC10-2-S6S |
| S8S | #8 SAE, Ductile | SDC10-2-S8S |

*** Aluminum Bodies available for lower pressure applications. Please consult factory for details.

Seal Option

| Code | Seal Material | Seal Kit |
|------|--------------------------|----------|
| P | Polyurethane Single Seal | 11132135 |

Manual Overrides

| Code | Description |
|------|--------------------|
| XC | No Manual Override |