



Relief Valves Technical Information

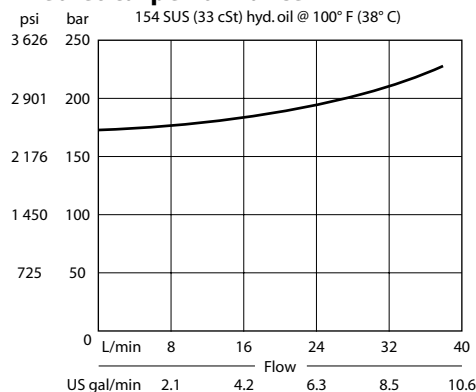
Direct Acting CP208-3

OPERATION

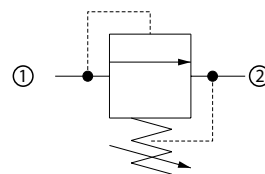
This is a direct-acting poppet type relief valve that relieves from 1 to 2.

SPECIFICATIONS

Theoretical performance



Schematic



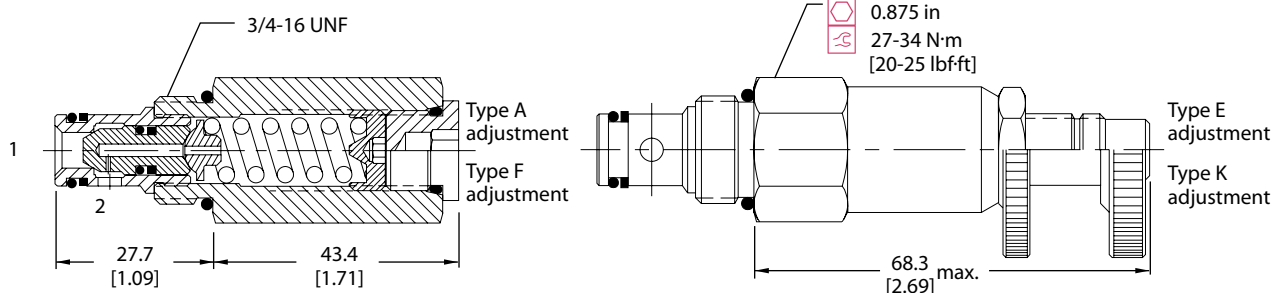
Specifications

Rated pressure	250 bar [3600 psi]
Rated flow	30 l/min [8 US gal/min]
Leakage	10 drops/min @ 80% of pressure setting
Weight	0.15 kg [0.32 lb]
Cavity	SDC08-2

DIMENSIONS

mm [in]

Cross-sectional view



ORDERING INFORMATION

Seals

B = Buna-N
V = Viton

Housing and ports

0 = No Housing
DG2B = Al, 1/4 BSP
DG3B = Al, 3/8 BSP
4S = Al, #4 SAE
6S = Al, #6 SAE
Other housings available

Adjustment option

A = Internal
E = External
F = Tamper resistant
K = Knob

Seal Kit

120221
120222

Housing P/N

No Housing
SDC08-2-DG-2B
SDC08-2-DG-3B
CP08-2-4S
CP08-2-6S

CP208 - 3 - B - 6S - A - C - 150

Crack pressure

Code x 10 = psi
Example: 150 = 1500 psi

Pressure range

	bar	[psi]
A =	7-69	[100-1000]
Standard	28	[400]
B =	14-138	[200-2000]
Standard	69	[1000]
C =	35-248	[500-3600]
Standard	103	[1500]