

Operating Guide

MCXS

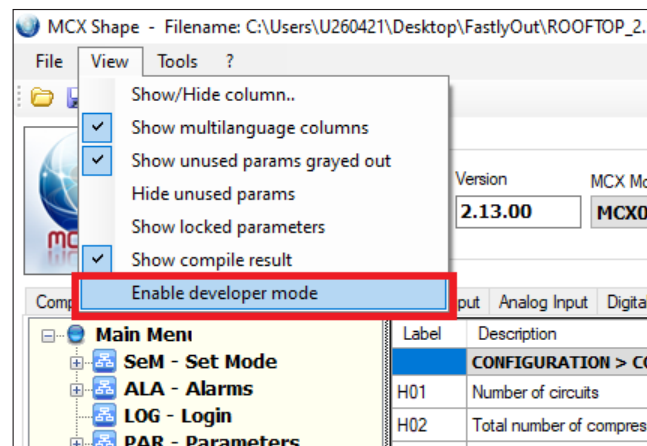
How to add a language

Summary

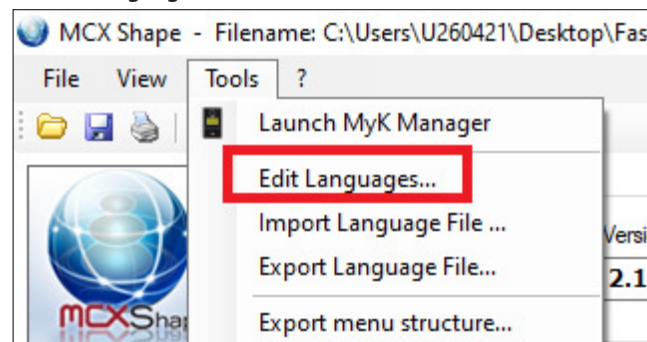
MCXShape allows adding new languages to the available one. The procedure is quite easy and is explained below.

Description

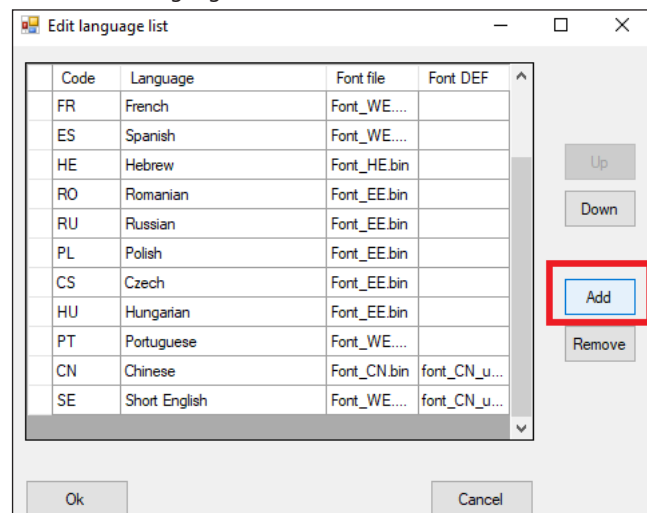
1. Enable developer mode from the menu "View":



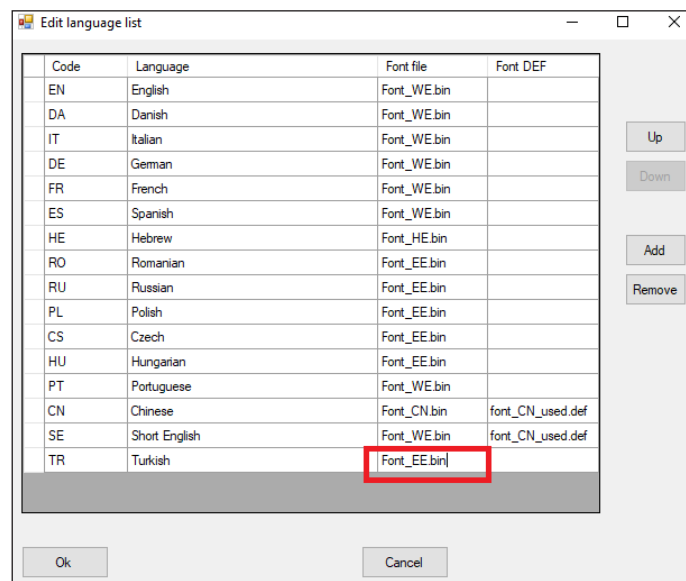
2. Edit Languages from the menu "Tools":



3. Add new languages:



4. Type the "Font" that will be used for the language:
The ones available are in the folder "bin". By opening them with a text editor, you can check the characters inside



5. Save the changes with the button "OK":



Note: now there will be an additional column containing the new language.

Application Data				
Name	Version	MCX Model	Expansion	Description
ROOFTOP	2.13.00	MCX08M2	NO	Rooftop

Label	Description	Short English	Turkish
CONFIG			
H01	Number Circuits num.		
H02	Total nu Compressors num.		
H03	Number Steps per comp.		
H04	Number Condensers num.		
H05	Number Fans per cond. 1		
H06	Number Fans per cond. 2		
H11	Fans in : Fans in common		
CONFIG			
H07	Heating Heating type		
H08	Number Heaters number		

6. Add the new language to the menu "LNG-Language"

MCX Shape - Filename: C:\Users\U260421\Desktop\FastlyOut\ROOFTOP_2.13.01\ROOFTOP

File View Tools ?

Application Data

Name: ROOFTOP Version: 2.13.00 MCX Model: MCX08M2

Compile & Upload Menu & Parameters Alarms Digital Input Analog Input Digital Output

Main Menu

- SeM - Set Mode
- ALA - Alarms
- LOG - Login
- PAR - Parameters
- EEV - Config EEV
- IO - Input/Output
- UTI - Utilities
- SER - Service
- LNG - Language
 - EN - English
 - DA - Danish
 - IT - Italian
 - DE - German
 - FR - French
 - ES - Spanish
 - HE - Hebrew
 - RO - Romanian
 - RU - Russian
 - UK - Ukrainian

Find... Ctrl+F

Add new menu...

Add new parameter...

Add menu...

Edit...

Remove menu/parameter

Cut Ctrl+X

Copy Ctrl+C

Left

common to all condenser

URATION > HEATING

type

of heaters

n time

upport to HP

URATION > DISPLAY

Icon

REGULATION > GENER

7. The "Out Code" must be set in such an order that it will be consecutive with the previous menu:

Menu settings

ID 755

Label TU

Description Turkish

Level 0

Enabled ☒

Out Code 185

Variable Name Menu_Label_755

Functionality

Visibility

Languages Refresh Languages

Language	Description
English	Turkish
Danish	
Italian	
German	
French	
Spanish	
Hebrew	
Romanian	
Russian	
Polish	

Save Cancel

Application Data

Name ROOFTOP

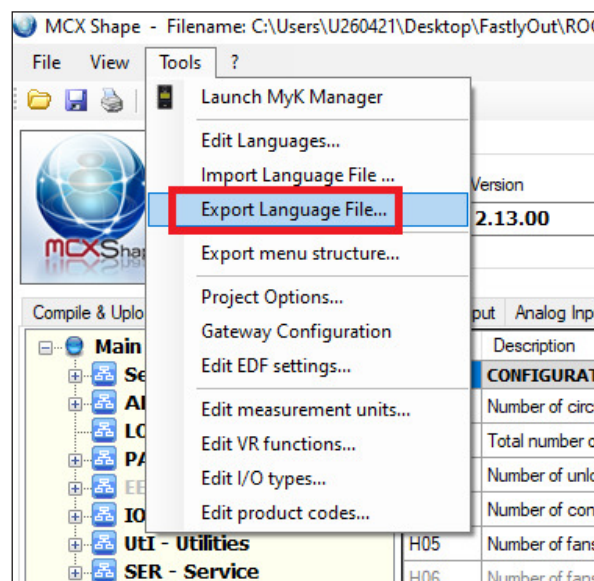
Compile & Upload Menu & Parameters Alarms Digital In

Main Menu

- SeM - Set Mode
- ALA - Alarms
- LOG - Login
- PAR - Parameters
- EEV - Config EEV
- IO - Input/Output
- UTI - Utilities
- SER - Service
- LNG - Language
 - EN - English
 - DA - Danish
 - IT - Italian
 - DE - German
 - FR - French
 - ES - Spanish
 - HE - Hebrew
 - RO - Romanian
 - RU - Russian
 - PL - Polish
 - CS - Czech
 - HU - Hungarian ...
 - PT - Portuguese 183
 - CN - Chinese 184
 - TU - Turkish 185
- STV - Status var

Label
H01
H02
H03
H04
H05
H06
H11
H07
H08
H09
H10
dSC
CF1
CF2
CF3
CF4
CF5

8. Export Language File from the menu "Tools":



9. Fulfill the translation in the file export_lang.XLS

10. Import language file from the menu "Tools":

