

Operating Guide

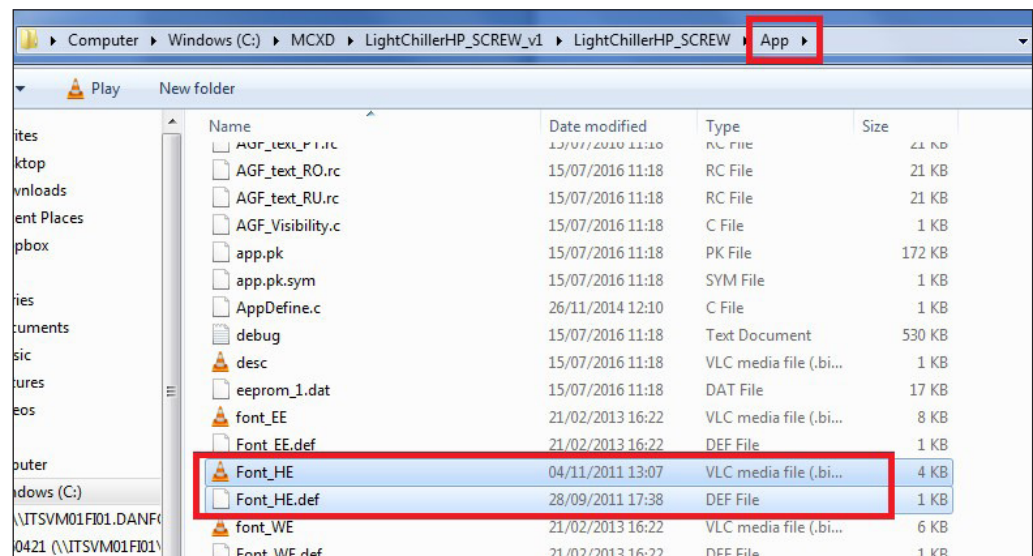
How to add a new font and language in MCXS

Summary

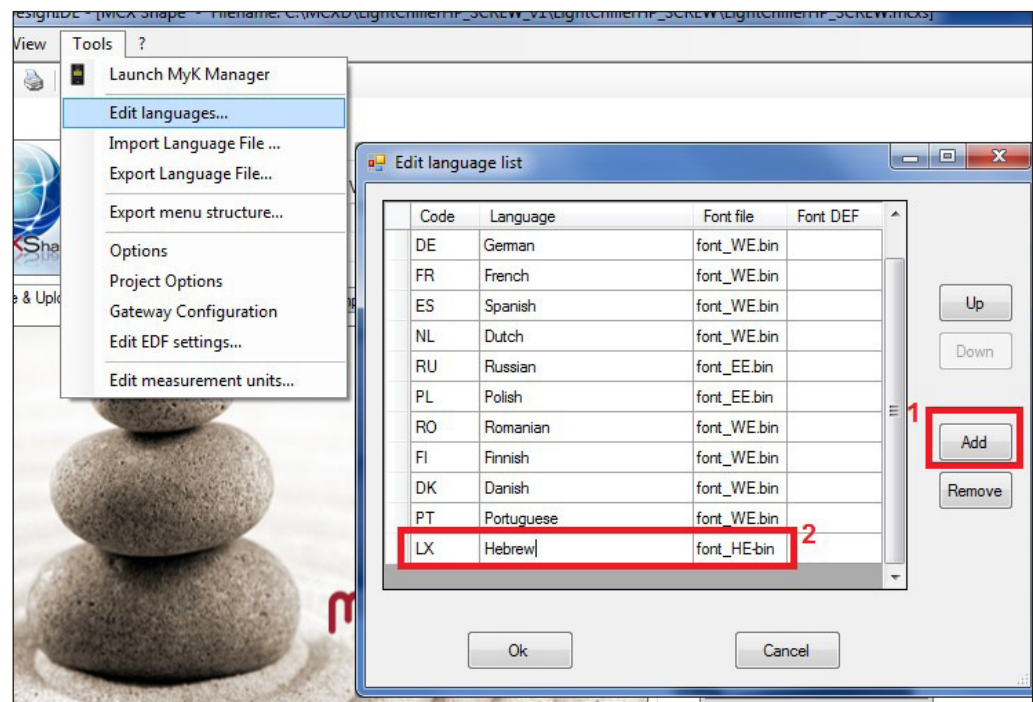
When using **MCXShape version 3**, it is possible to add a new font and/or language.

Description

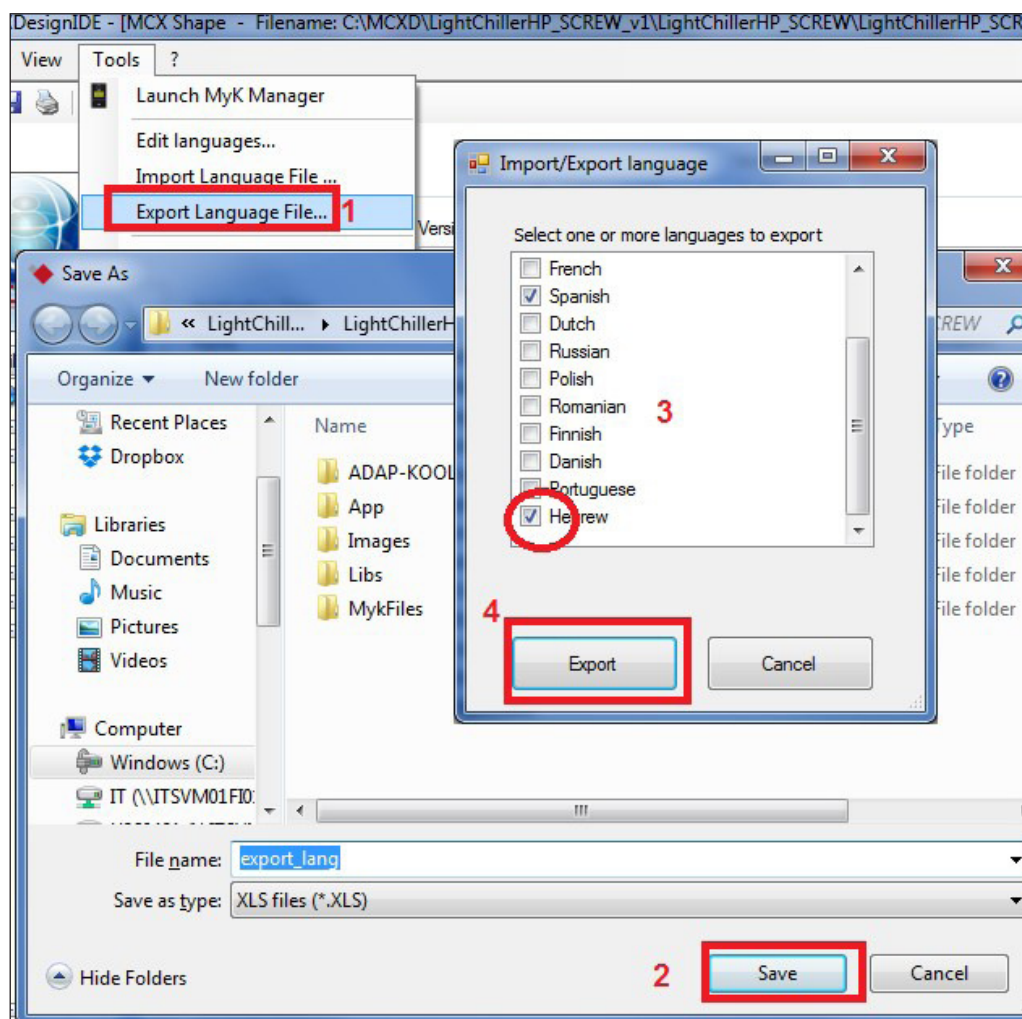
1. If the font is not already supported: add the new font and .def file to the "App" folder (or "Bin" for some software) inside the project:



2. From MCXShape/Tools/Edit languages, add the new language and enter the code, the name of the language and the font file to refer to (i.e. the font file used in the picture above):

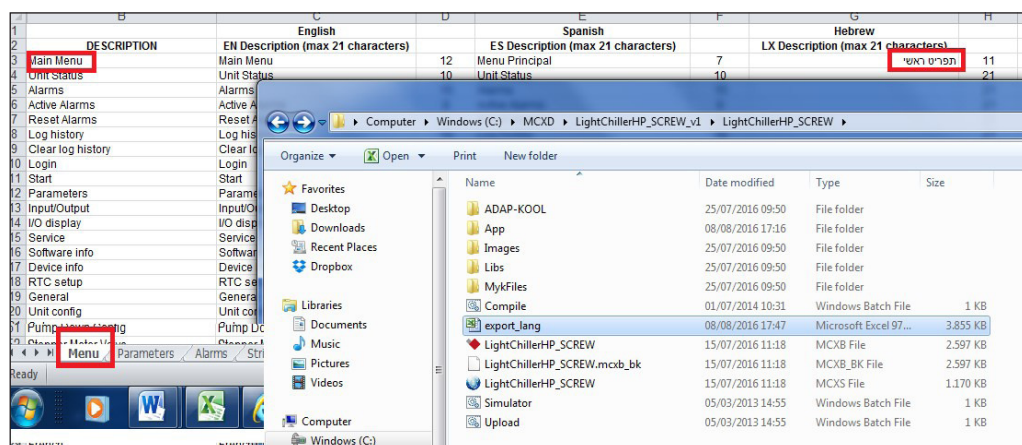


3. Export the language file in order to update the translation:

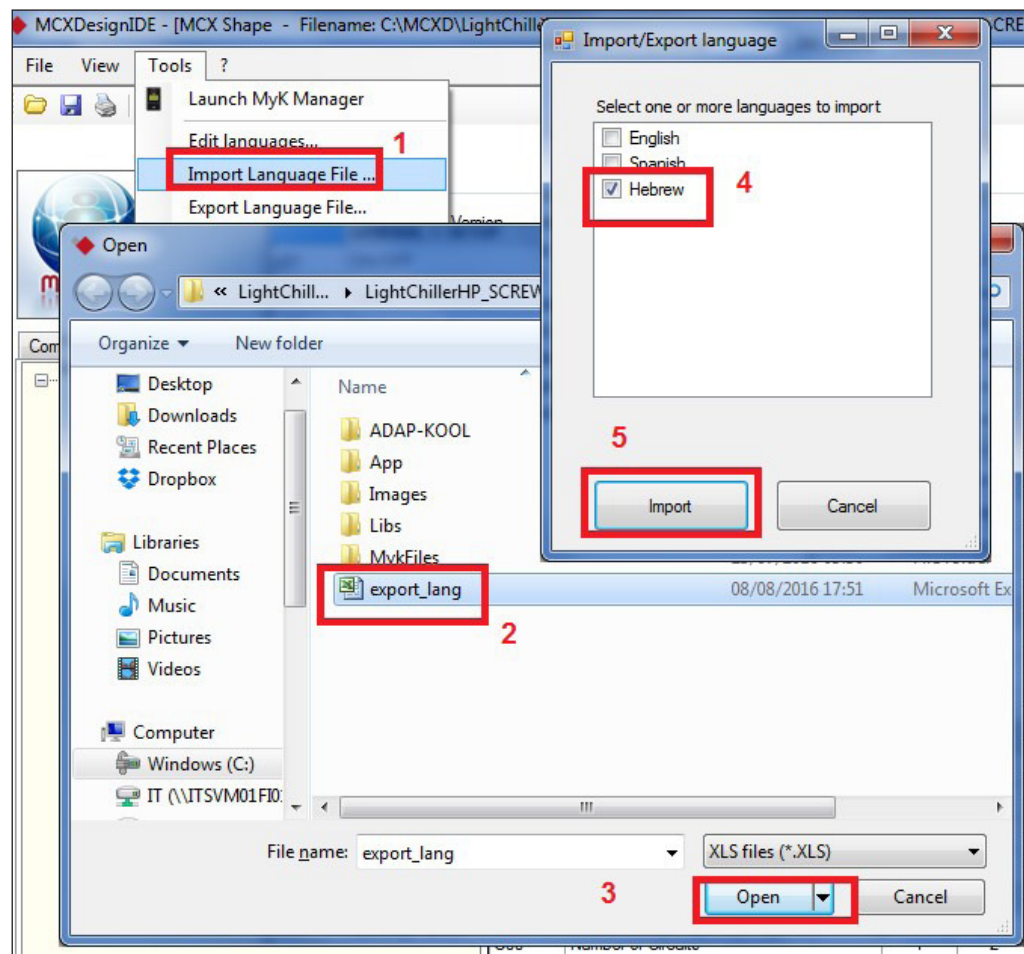


Note: It is possible to select only a few languages to export.

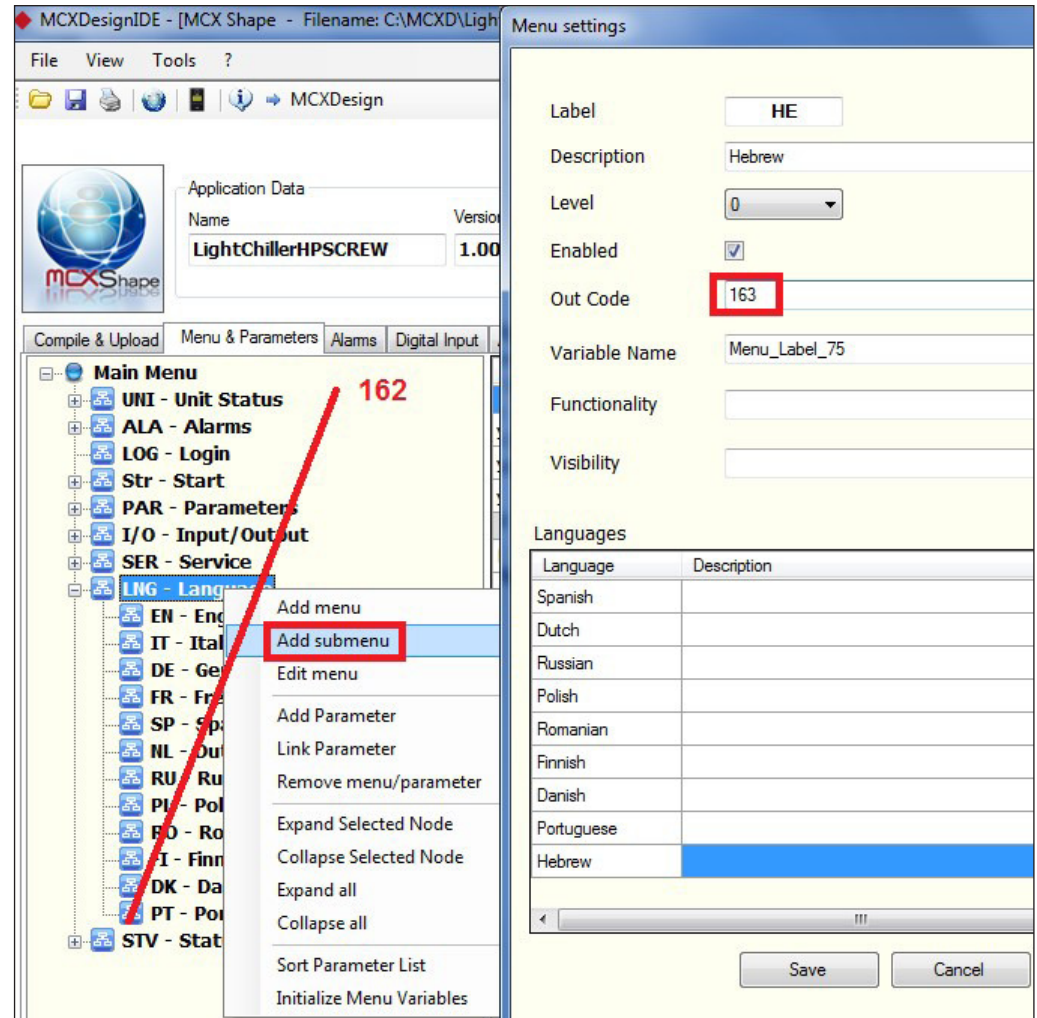
4. Update the translation file:



5. Import the translation:



6. Add the new language to the LNG-Language menu, making sure to enter a consecutive number in the out code of the menu setting:



Danfoss A/S

Climate Solutions • danfoss.com • +45 7488 2222

Any information, including, but not limited to information on selection of product, its application or use, product design, weight, dimensions, capacity or any other technical data in product manuals, catalogues descriptions, advertisements, etc. and whether made available in writing, orally, electronically, online or via download, shall be considered informative, and is only binding if and to the extent, explicit reference is made in a quotation or order confirmation. Danfoss cannot accept any responsibility for possible errors in catalogues, brochures, videos and other material. Danfoss reserves the right to alter its products without notice. This also applies to products ordered but not delivered provided that such alterations can be made without changes to form, fit or function of the product.

All trademarks in this material are property of Danfoss A/S or Danfoss group companies. Danfoss and the Danfoss logo are trademarks of Danfoss A/S. All rights reserved.