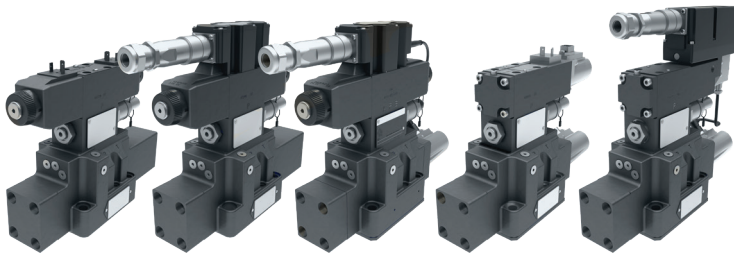


# Vickers® by Danfoss

## Industrial Proportional Valves

### Size 07 - New Design



## Improved performance and expanded options

The expansive portfolio of Vickers by Danfoss proportional valves offers a wide variety of features and performance levels to meet the demands of industrial applications. To further expand our offering, we are upgrading the size 07 industrial proportional valve family with a new body design that delivers significantly improved flow performance and power capacity.

To meet the needs of every application, 24 spool configuration options have also been added across the line of size 07 proportional valves, including an all-new 230LPM spool.

With **improved performance, expanded spool options, and competitive pricing**, these new valves hit a sweet spot in the proportional valve marketplace.

### Size 07 proportional valve types

- **KDG5V-7:** Standard performance w/out spool feedback (w/out OBE)
- **KBDG5V-7:** Standard performance w/out spool feedback (with OBE)
- **KBFDG5V-7:** High performance with single spool feedback (with OBE)
- **KHDG5V-7:** Servo performance with dual spool feedback (w/out OBE)
- **KBHDG5V-7:** Servo performance with dual spool feedback (with OBE)

### New size 07 features

- Maximum rated flow up to 230LPM (@ 10bar)
- Higher power capacities with the maximum flow @100bar DP
- Twice as many spool configurations including symmetric, asymmetric, low flow and high flow (dual gain spool) combination and closed transient
- KBHDG5V7 offers the fastest response time in the market – less than 30ms at 230LPM

\* Note: Pilot valve electronics did not change with this new design

### Markets

- Machine tools
- Molding
- Metal forming
- Primary metals
- Pulp & paper
- Wind Turbine
- Wood processing
- Test and simulation
- Oil and gas
- Marine/offshore
- Civil engineering

# Size 07 Industrial Proportional Valves

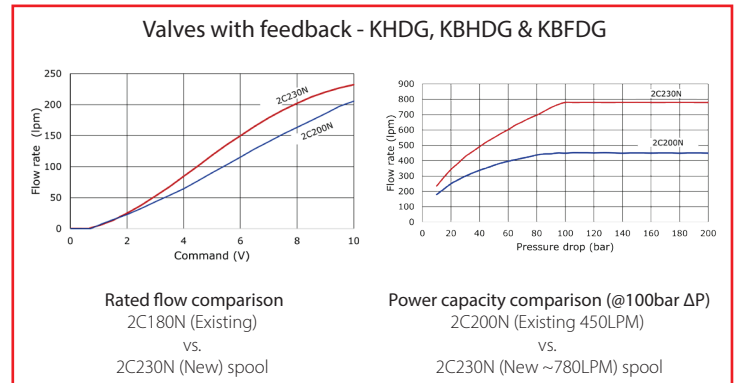
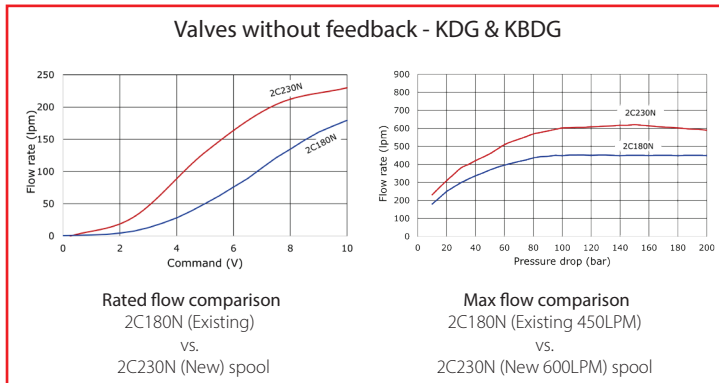
ENGINEERING  
TOMORROW



## Model comparison

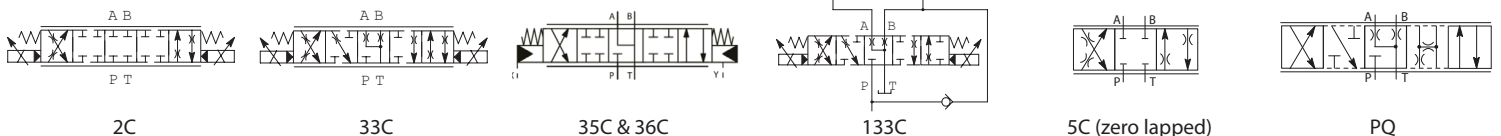
	KDG5V-7-*-20 Non-OBE	KBDG5V-7-*-20 OBE	KBFDG5V-7-*-20 OBE	KHDG5V-7-*-30 Non-OBE	KBHDG5V-7-*-20 OBE
<b>Spool Configurations</b>	<b>9</b>	<b>9</b>	<b>12</b>	<b>15</b>	<b>15</b>
<b>Spool Types</b> (Symmetric & Asymmetric)	2C230N, 33C230N, 2C230N140, 33C230N140, 2C180N, 33C170N, 2C180N100, 133C230N140, 36C185N	2C230N, 33C230N, 2C230N140, 33C230N140, 2C180N, 33C170N, 2C180N100, 133C230N140, 36C185N	2C230N, 33C230N, 2C230N140, 33C230N140, 2C150N85, 2C200N, 33C160N, 33C130N65, 133C230N140, 35C230N, 36C185N, 35C200F	2C230N, 33C230N, 2C230N140, 33C230N140, 2C150N85, 2C200N, 33C160N, 33C130N65, 5C230N, 5C230N140, 133C230N140, 35C230N, 36C185N, 35C200F, PQ230F50	2C230N, 33C230N, 2C150N85, 2C200N, 33C160N, 33C130N65, 2C230N140, 33C230N140, 5C230N, 5C230N140, 133C230N140, 35C230N, 36C185N, 35C200F, PQ230F50
<b>Flow options (LPM)</b>	170, 180, 185, 230, 180/100, 230/140	170, 180, 185, 230, 180/100, 230/140	130/65, 150/85, 160, 185, 200, 230, 230/140	130/65, 150/85, 160, 185, 200, 230, 230/140	130/65, 160, 185, 200, 230, 230/140
<b>Maximum Flow @ 100 bar DP</b>	<b>600LPM</b>	<b>600LPM</b>	<b>750LPM</b>	<b>780LPM</b>	<b>780LPM</b>

## Flow comparisons - Existing vs. new design



## Spool symbols

Refer to table above for available spool types for each valve model.



Danfoss can accept no responsibility for possible errors in catalogues, brochures and other printed material. Danfoss reserves the right to alter its products without notice. This also applies to products already on order provided that such alterations can be made without subsequent changes being necessary in specifications already agreed. All trademarks in this material are property of the respective companies. Danfoss and the Danfoss logotype are trademarks of Danfoss A/S. All rights reserved.