

# Vickers<sup>®</sup> by Danfoss

## Vane Pumps

---

ENGINEERING  
TOMORROW



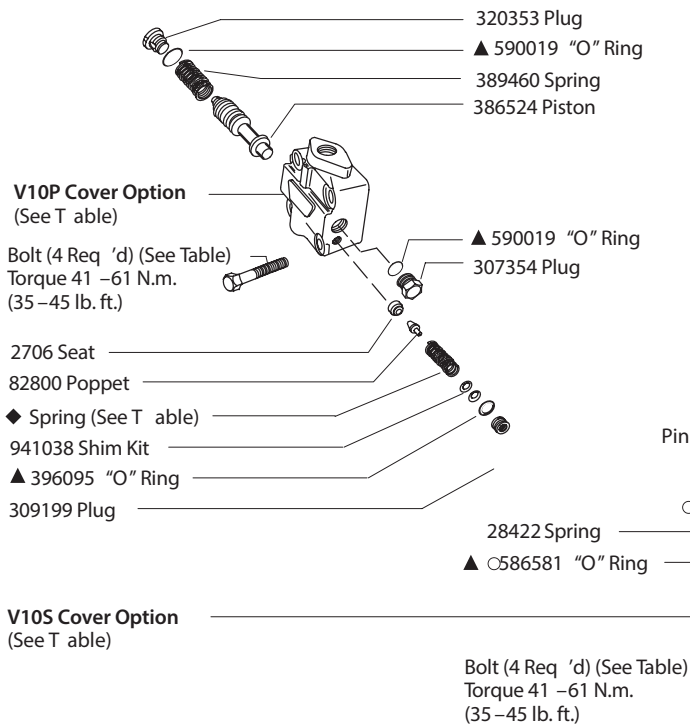
## Vane Type Triple Pump

(F3)-3520VQSV10\*\_\*\*\*\*\*\_\*\*\*\*\*-20\*

AX438766292844en-000101

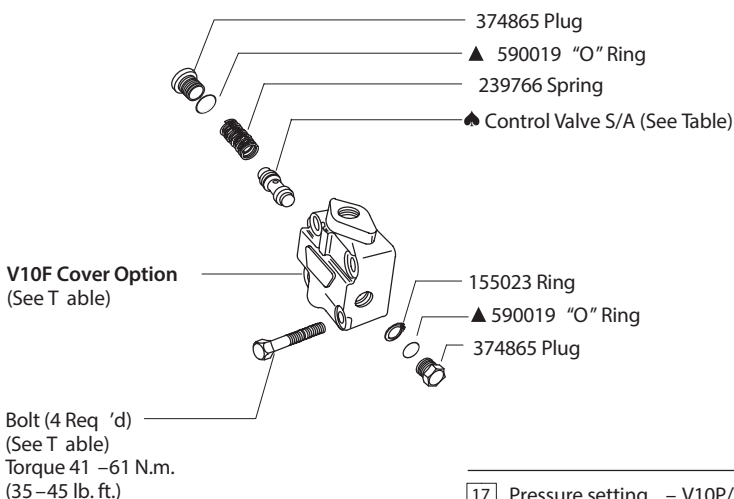
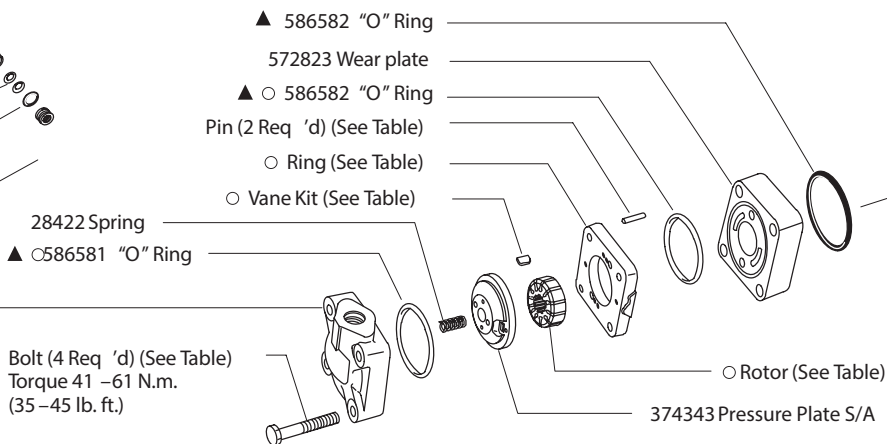
10 SAE rated capacity (V10 cover end cartridge)

USgpm	Rotor	Vane Kit (12 vanes)	O Ring	Pin (V10S)	Pin (V10F/V10P)	Bolt (V10S)	Bolt (V10F)	Bolt (V10P)	Cartridge Kit
1	317681	923499	317674	2456	2456	11156	295344	295344	923471
2			317675						923470
3			317676						923496
4	351247	923500	317677	16662	16662	1278	432511	432511	923469
5			317678						923468
6	357286	923501	355641	179341	179341	432509	295346	295346	923497
7			331813						923498



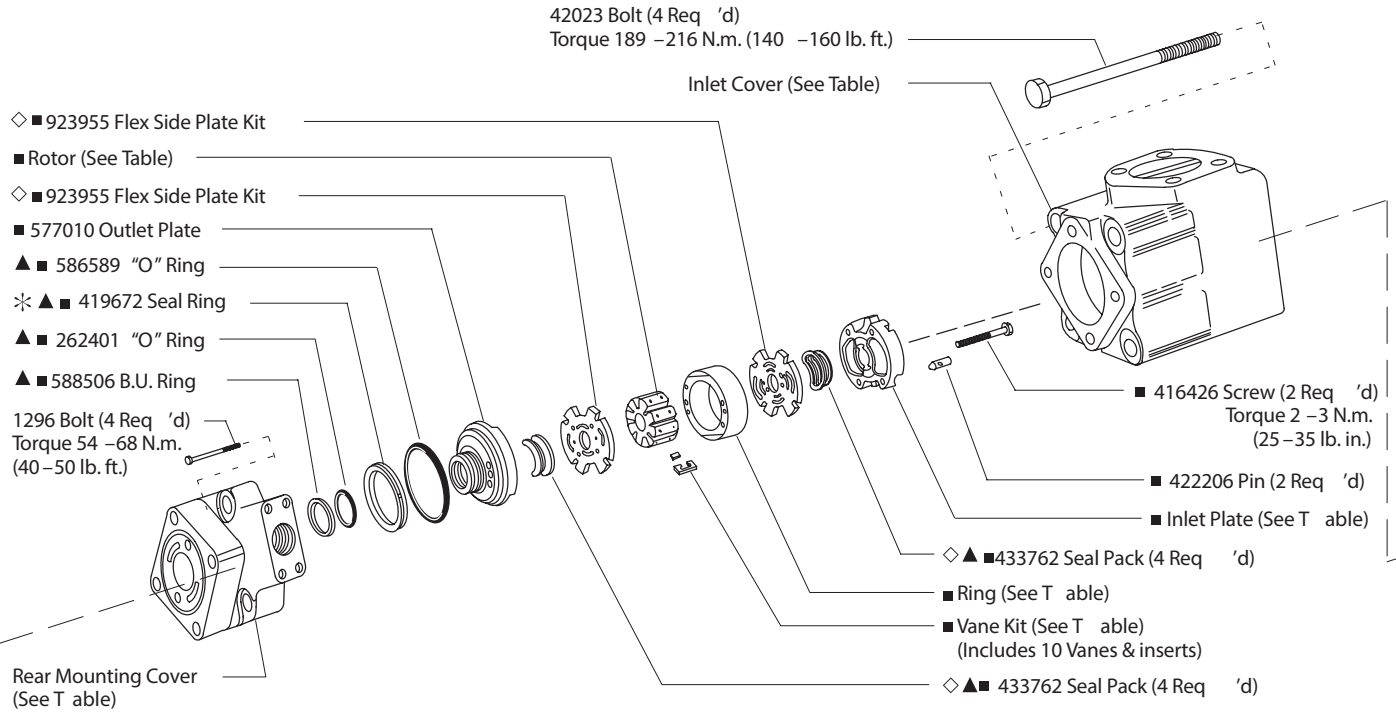
9 V10 port connection

Code	V10S Cover	V10F Cover	V10P Cover
P	372863	379543	_____
R	372864	_____	_____
S	372865	_____	_____
Y	377829	_____	_____
T	_____	372851	_____
K	_____	_____	388262



17 Pressure setting – V10P/V10F (Omit for V10S)

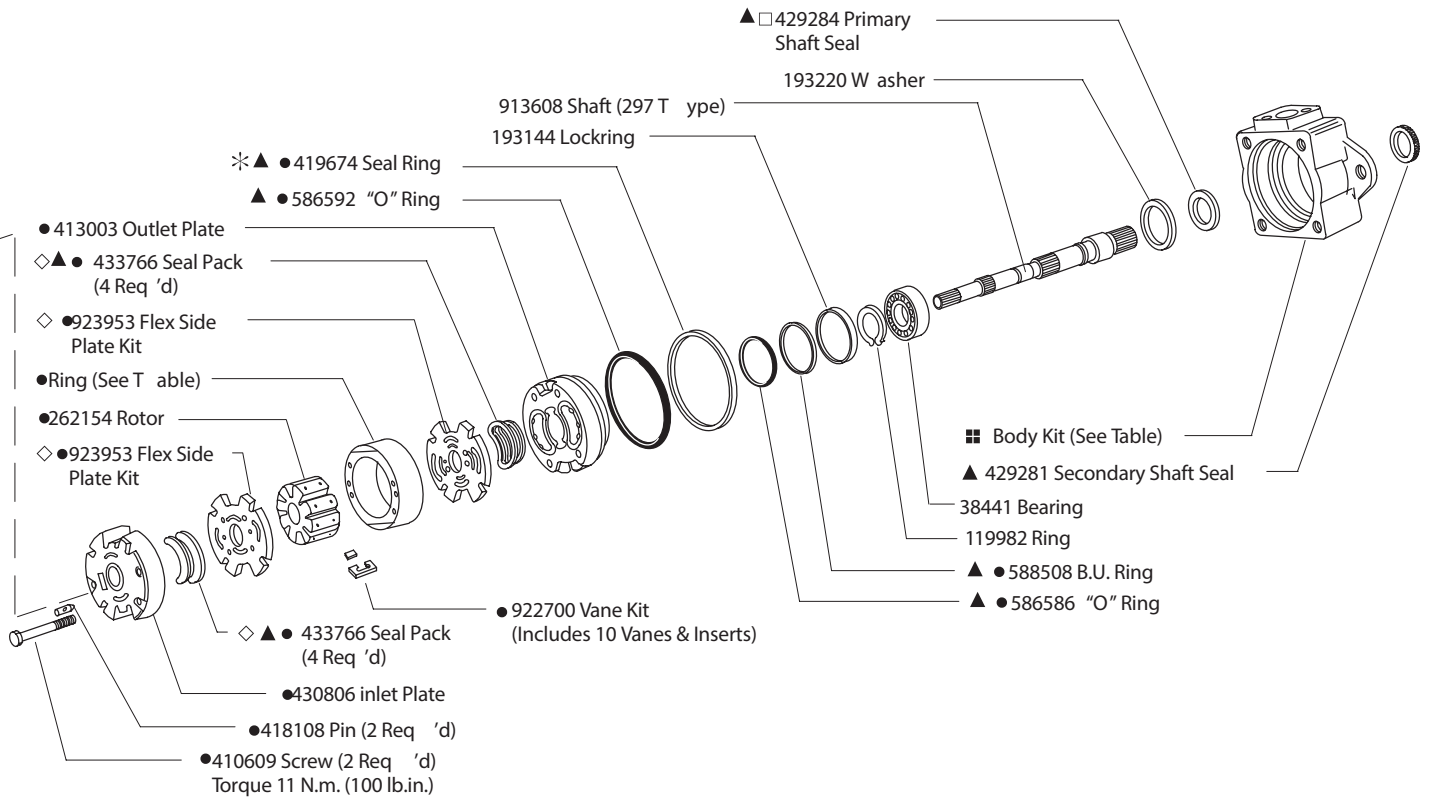
Code	Pressure setting V10P/V10F	V10P Spring	V10F control valve S/A
A	250 psi	252886	229613
B	500 psi	2280	233018
C	750 psi	2282	232794
D	1000 psi		232795
E	1250 psi	2281	232796
F	1500 psi		232797
G	1750 psi		232798
H	2000 psi		232799
J	2250 psi		233019
K	2500 psi		233020



8 SAE rated capacity (\*\*20 VQ center cartridge)

■ USgpm	■ Ring	■ Inlet Plate	■ Rotor	■ Vane Kit	■ F3 Cart. Kit
5	333624	419502	402690	922741	574918
8	333625				574920
9	374799				574921
11	333626	419501	403539	922745	574922
12	353901				574923
14	353902				574924

- Included in 35\*\* VQ shaft end cartridge kit.
- Included in \*\*20 VQ center cartridge kit.
- Included in V10 cover end cartridge kit.
- ▲ Included in seal kit 02 –315625. (Kit contains F3 components & both shaft seals.)
- ◆ Included in flex side plate kit; bronze face of plate must be installed toward the rotor. Kit also contains four seal packs.
- Assemble seal with spring loaded sealing member towards bearing. Seals to be completely wetted with oil prior to assembly.
- \* Install 419674 & 419672 sealing ring into body, then install cartridge kit.



6 SAE rated capacity (35\*\*VQ shaft end cartridge)

●USgpm	●Ring	●F3 Cart. Kit
21	394961	421582
25	319396	421583
30	319397	421584
35	319398	421585
38	319399	421586

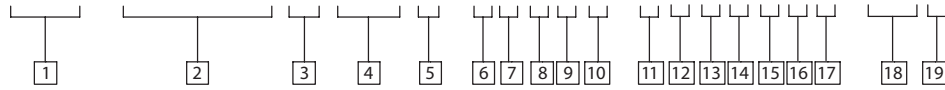
7 Port connections

Connection Type	■ Body Kit	Inlet Cover	Rear Mounting Cover
A - 4 Bolt Flange (Inch)	02-136919	250818	572822
AM - 4 Bolt Flange (Metric)	02-136920	478506	860778

■ NOTE: Body kit includes body, ball, and plug. (Ball and plug not shown)

# Model Code

## (F3) - 3520VQ S V10 \* - \* \* \* \* \* - \* \* \* \* \* - 20 \*



**1 Special seals**

F3 – Vition “O”Rings and shaft seals

**2 Pump series designation**

35\*\*VQ – Shaft end pump  
\*\*20VQ – Center pump

**3 Body mounting flange**

S – SAE mounting per J –744 101 –2

**4 Pump series designation**

V10 cover end pump

**5 V10 pump cover options**

S – Standard cover  
F – Flow control and relief cover  
P – Priority valve and relief cover

**6 SAE rated capacity (VQ shaft – end cartridge)**

Code	Code
21 – 21 USgpm	35 – 35 USgpm
25 – 25 USgpm	38 – 38 USgpm
30 – 30 USgpm	

**7 VQ port connections (inlet & outlet #1 & #2)**

A – 4 bolt flange (inch thread)  
AM – 4 bolt flange (metric thread)

**8 SAE rated capacity (VQ center cartridge)**

Code	Code
5 – 5 USgpm	
6 – 6 USgpm	11 – 11 USgpm
8 – 8 USgpm	12 – 12 USgpm
9 – 9 USgpm	14 – 14 USgpm

**9 V10 port connections**

V10S standard covers and outlet # 3

Code

S – .750 – 16 Str. thd.  
P – 1/2" – NPT thd.  
Y – .875 – 14 Str. thd.  
R – 1.062 – 12 Str. thd.

**V10F flow/relief control cover**

Code	Outlet # 3	Tank port
T – .750 – 16 Str. thd		.750 – 16 Str. thd.
P – .750 – 16 Str. thd.		1/2" – NPT thd.

**V10P priority control covers**

Code	Primary port Str. thd	Secondary port Str. thd.	Tank port Str. thd
K – .5625 – 18		.750 – 16	.5625 – 18

**10 SAE rated capacity (V10 cover end cartridge)**

Code	Code
1 – 1 USgpm	5 – 5 USgpm
2 – 2 USgpm	6 – 6 USgpm
3 – 3 USgpm	7 – 7 USgpm
4 – 4 USgpm	

**11 Shaft seal**

Blank – Single seal  
S – Double seal

**12 Shaft type**

297 – All series

**13 Port orientation (Outlet #1)**

(Viewed from cover end of pump; refer to table on next page)

**14 Port orientation (Outlet #2)**

(Viewed from cover end of pump; refer to table on next page)

**15 Port orientation (Outlet #3 or primary outlet)**

(Viewed from cover end of pump; refer to table on next page)

**16 Controlled flow rate, V10F & V10P (Omit for standard cover)**

Code	Code
3 – 3 USgpm	6 – 6 USgpm
4 – 4 USgpm	7 – 7 USgpm
5 – 5 USgpm	8 – 8 USgpm

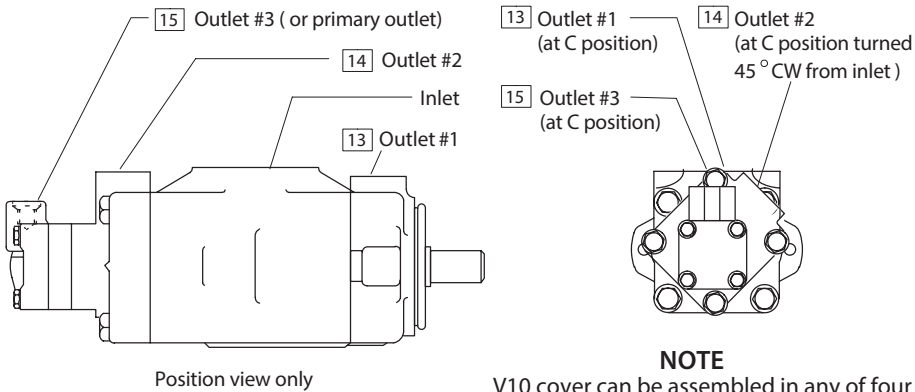
**17 Relief valve pressure setting, V10F & V10P (Omit for standard cover)**

Code	Code
A – 250 psi	F – 1500 psi
B – 500 psi	G – 1750 psi
C – 750 psi	H – 2000 psi
D – 1000 psi	J – 2250 psi
E – 1250 psi	K – 2500 psi

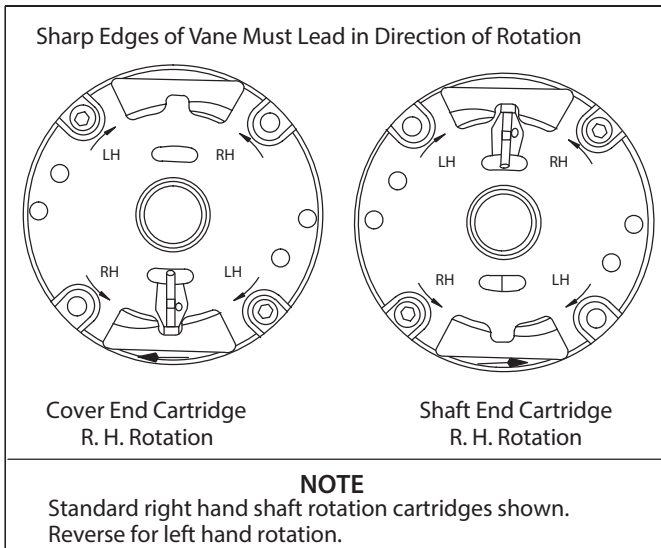
**18 Design (Subject to change)**

**19 Rotation (Viewed from shaft end of pump)**

L – Left hand for counterclockwise  
R – Right hand for clockwise



13 14 15 Port orientation code (Viewed from cover end of pump)			
Outlet	13 #1	14 #2	15 #3
Opposite inlet	A		A
135° CCW from inlet		A	
90° CCW from inlet	B		B
45° CCW from inlet		B	
Inline with inlet	C		C
45° CW from inlet		C	
90° CW from inlet	D		D
135° CW from inlet		D	



**NOTE**

To reverse cartridge kit rotation, remove the two screws and reverse the location of the inlet support plate and the outlet support plate. Reinstall the two screws hand tight. Use pump cover to align all sections of the cartridge. Carefully remove the cover and tighten the screws.

When ordering spare cartridge parts, it is recommended they be obtained in cartridge kits. Kits are assembled and tested for either right or left hand rotation. If left hand rotation is required, it should be specified on parts order by adding suffix "L" to cartridge kit number.

#### Products we offer:

- Cartridge valves
- DCV directional control valves
- Electric converters
- Electric machines
- Electric motors
- Gear motors
- Gear pumps
- Hydraulic integrated circuits (HICs)
- Hydrostatic motors
- Hydrostatic pumps
- Orbital motors
- PLUS+1® controllers
- PLUS+1® displays
- PLUS+1® joysticks and pedals
- PLUS+1® operator interfaces
- PLUS+1® sensors
- PLUS+1® software
- PLUS+1® software services, support and training
- Position controls and sensors
- PVG proportional valves
- Steering components and systems
- Telematics

**Danfoss Power Solutions** is a global manufacturer and supplier of high-quality hydraulic and electric components. We specialize in providing state-of-the-art technology and solutions that excel in the harsh operating conditions of the mobile off-highway market as well as the marine sector. Building on our extensive applications expertise, we work closely with you to ensure exceptional performance for a broad range of applications. We help you and other customers around the world speed up system development, reduce costs and bring vehicles and vessels to market faster.

Danfoss Power Solutions – your strongest partner in mobile hydraulics and mobile electrification.

#### Go to [www.danfoss.com](http://www.danfoss.com) for further product information.

We offer you expert worldwide support for ensuring the best possible solutions for outstanding performance. And with an extensive network of Global Service Partners, we also provide you with comprehensive global service for all of our components.

Local address:

#### Hydro-Gear

[www.hydro-gear.com](http://www.hydro-gear.com)

#### Daikin-Sauer-Danfoss

[www.daikin-sauer-danfoss.com](http://www.daikin-sauer-danfoss.com)

**Danfoss  
Power Solutions (US) Company**  
2800 East 13th Street  
Ames, IA 50010, USA  
Phone: +1 515 239 6000

**Danfoss  
Power Solutions GmbH & Co. OHG**  
Krokamp 35  
D-24539 Neumünster, Germany  
Phone: +49 4321 871 0

**Danfoss  
Power Solutions ApS**  
Nordborgvej 81  
DK-6430 Nordborg, Denmark  
Phone: +45 7488 2222

**Danfoss  
Power Solutions Trading  
(Shanghai) Co., Ltd.**  
Building #22, No. 1000 Jin Hai Rd  
Jin Qiao, Pudong New District  
Shanghai, China 201206  
Phone: +86 21 2080 6201