

# DANFOSS EDITRON | SYSTEM PRODUCT OVERVIEW

# ON-HIGHWAY

# PRODUCT OVERVIEW

## Optimized product portfolio for traction application

- eMachines up to 750 KW (Medium-duty)
- Multi-speed drivetrain solutions
- Converters up to 1.200 KW including DC/DC to boost DC-link voltage or charge HV batteries

## Product portfolio optimized towards

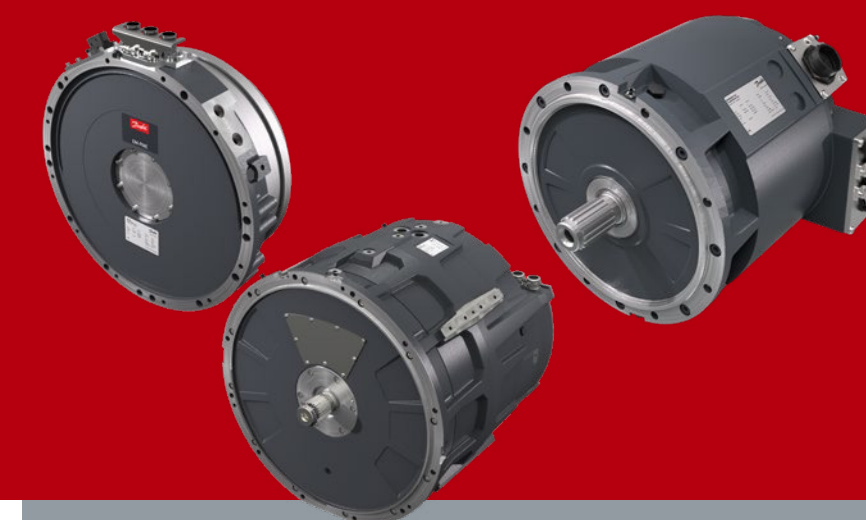
- Highest efficiency thanks to PM and SRPM technology
- Increased productivity thanks to sophisticated control SW platform
- Designed for harsh environments
- Product portfolio designed for On-Highway trucks and busses.

Converters including DC/DC

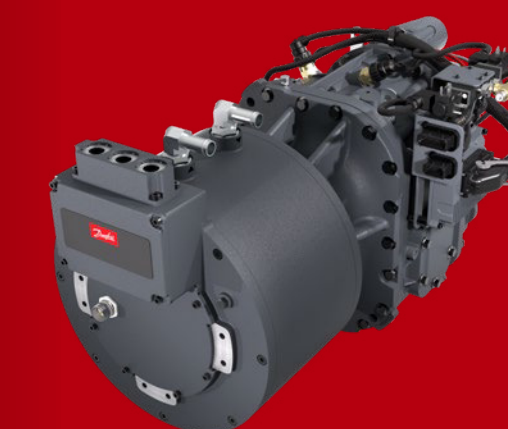
eMachines (Medium-duty)

DriveTrain

Direct-drive and hybrid-electric for traction and work functions



Multi-speed drivetrain Systems

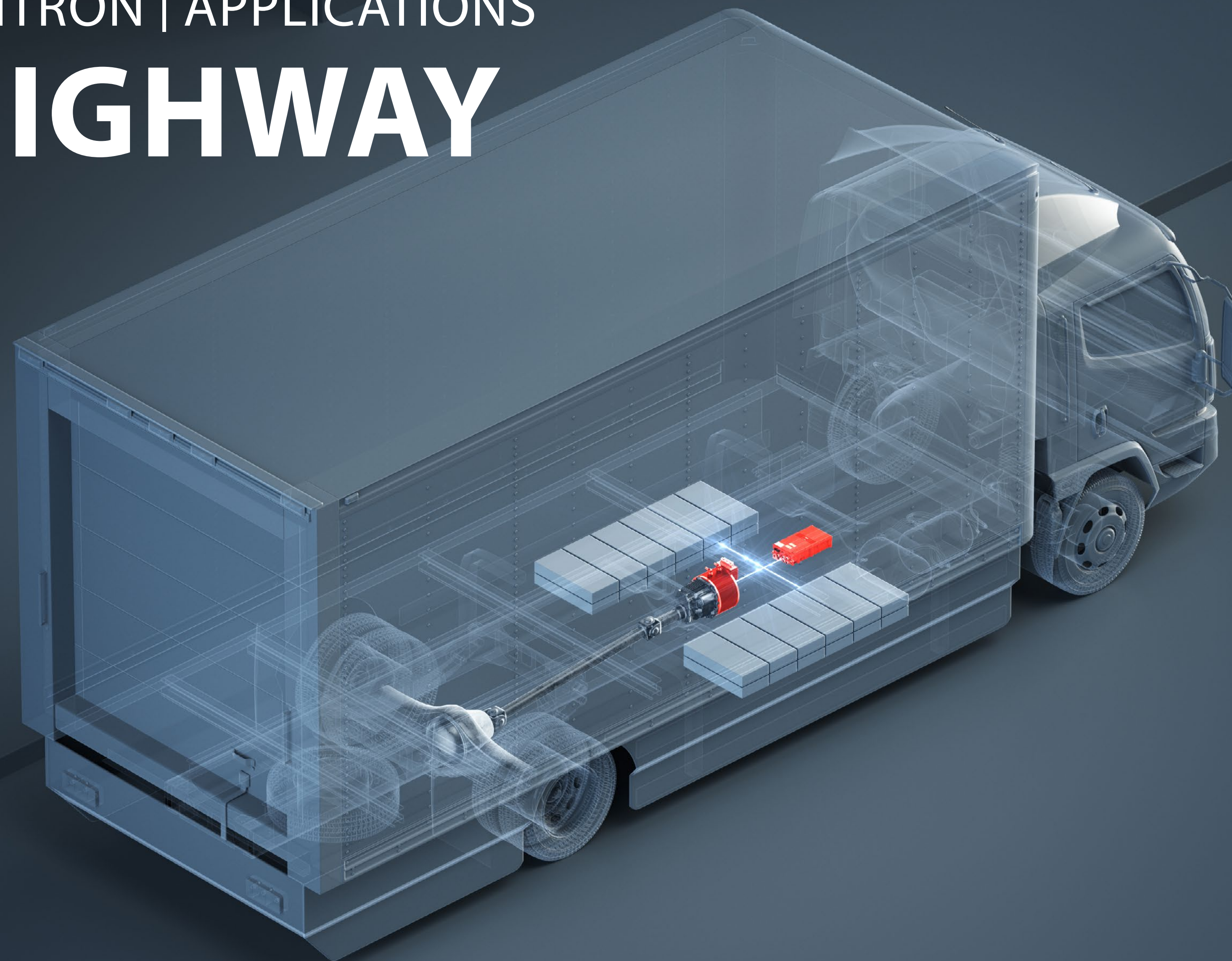


EDITRON system and PLUS+1 compliance blocks



# DANFOSS EDITRON | APPLICATIONS

# ON-HIGHWAY



# DELIVERY TRUCK

## FULL ELECTRIC

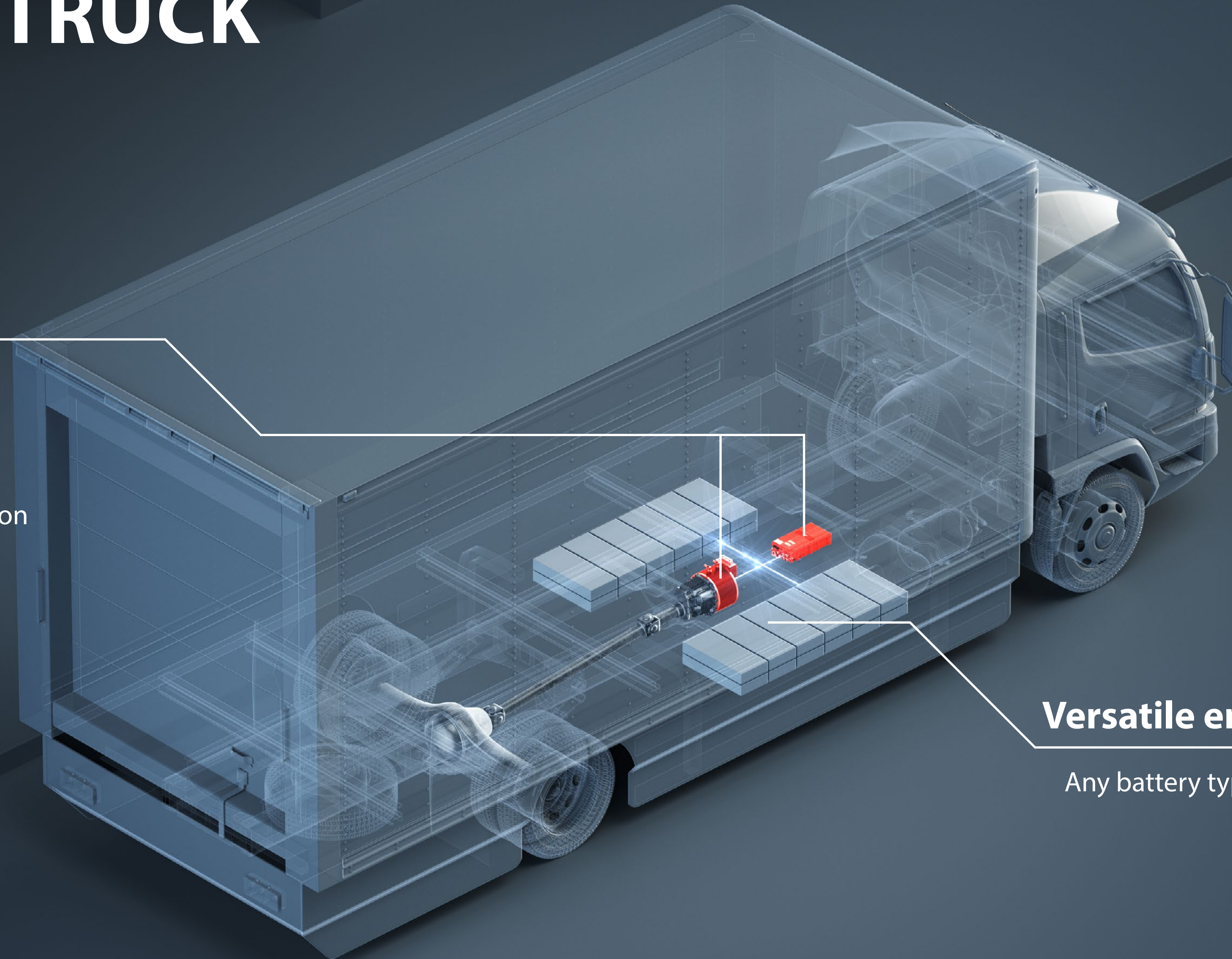
### Traction System

ED-DT (Drivetrain) system

1x **EM-PMI**

1x **EC-C**

Single or multi-speed transmission

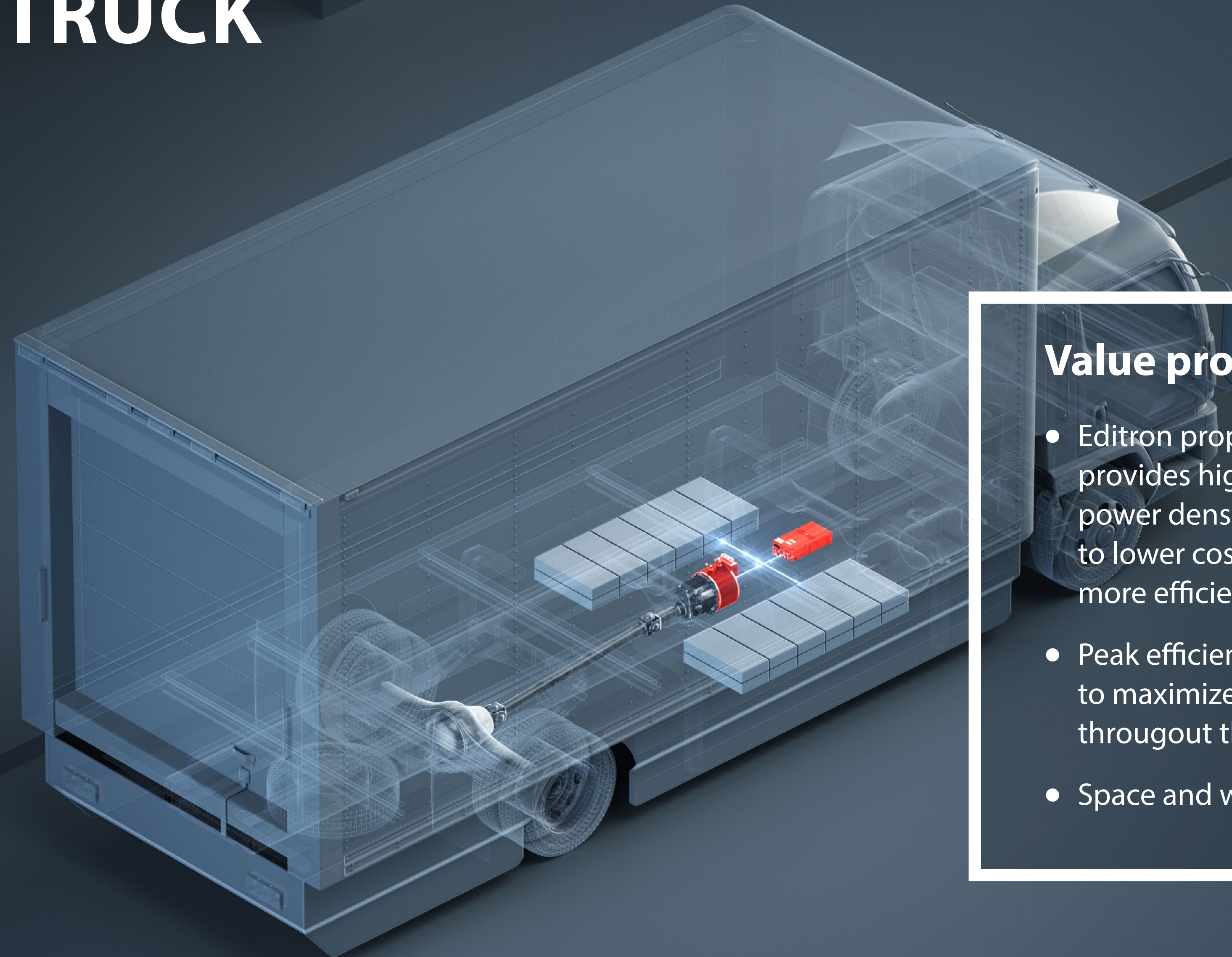


### Versatile energy storage

Any battery type or fuel cell

# DELIVERY TRUCK

## FULL ELECTRIC

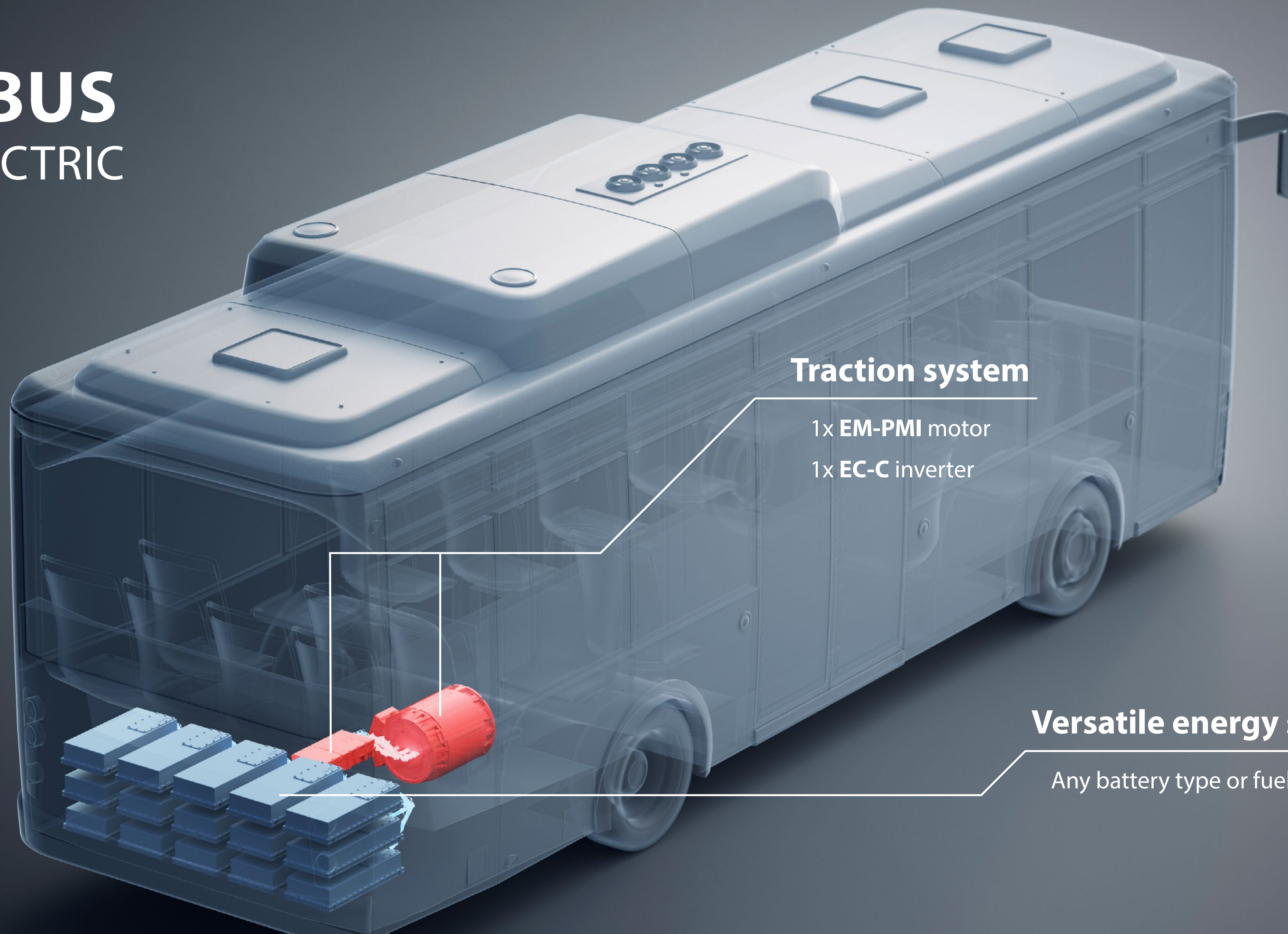


### Value proposition

- Editron propulsion system provides high torque and power density and leads to lower cost basis and more efficient battery use.
- Peak efficiency designed to maximize efficiency throughout the drive cycle
- Space and weight savings

# CITY BUS

## FULL ELECTRIC



### Traction system

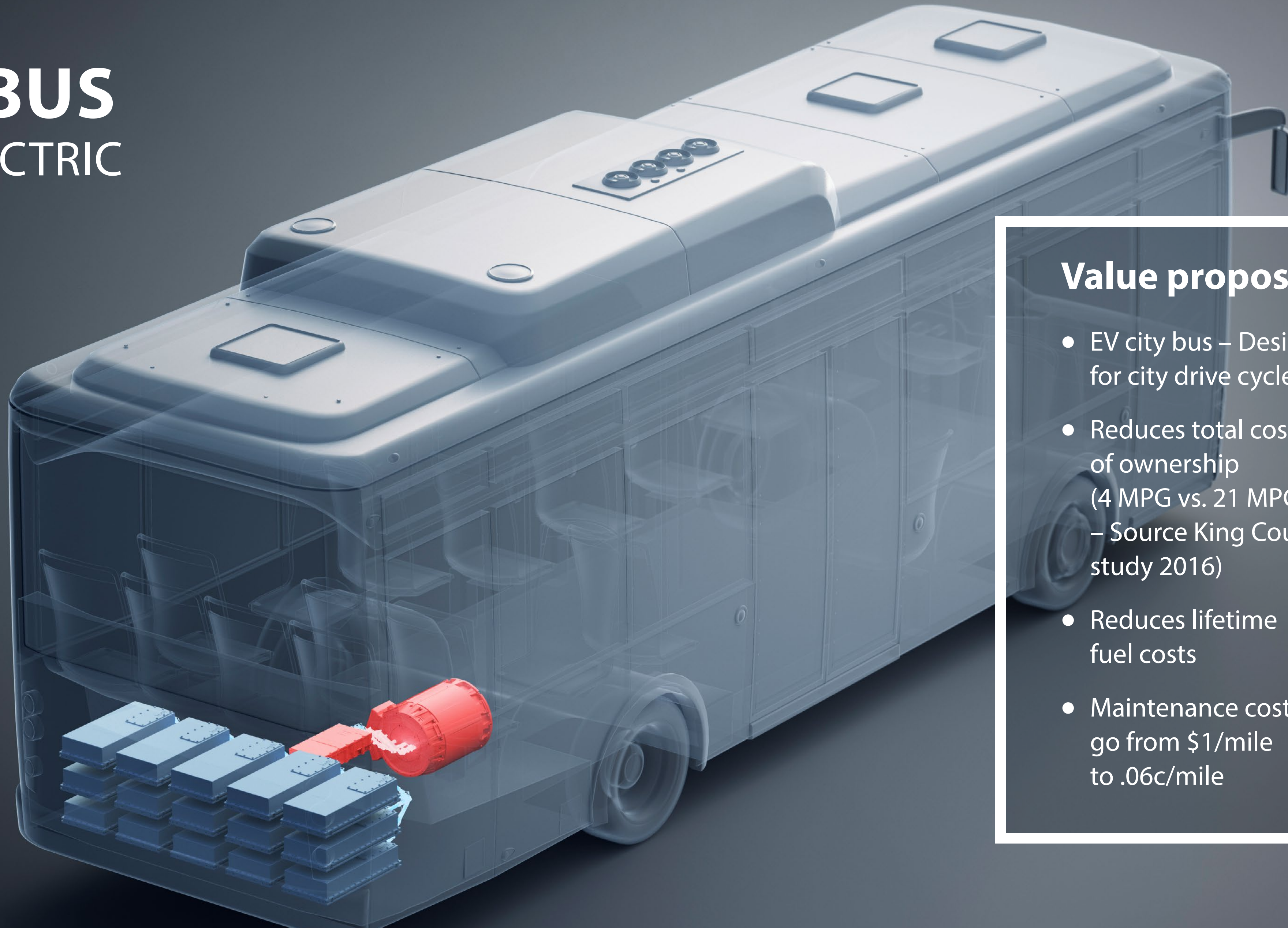
- 1x EM-PMI motor
- 1x EC-C inverter

### Versatile energy storage

Any battery type or fuel cell

# CITY BUS

## FULL ELECTRIC



### Value proposition

- EV city bus – Designed for city drive cycle
- Reduces total cost of ownership (4 MPG vs. 21 MPGe – Source King County study 2016)
- Reduces lifetime fuel costs
- Maintenance costs go from \$1/mile to .06c/mile

# *Danfoss*

ENGINEERING  
TOMORROW

[www.danfoss.com/editron](http://www.danfoss.com/editron)

