



Table of Contents

General Information	2
Functional Symbols	2
Model Codes	3
Technical Data	4
Flow Curves	5
Dimensions	6
Application Notes	7
Released Part Numbers	7

General Information

Features

- For subplate mounting mounting pattern to DIN 24 340, form D, ISO 5781, CETOP-RP 121H,
- Three adjustments elements:
 - Rotary knob
 - Sleeve with hexagon and protective cap
 - Lockable rotary knob with scale
- Five Pressure settings
- Optional check valve

General

XCG-2V-10 pressure valves are pilot operated pressure reducing valves, which are controlled from the secondary circuit.

They basically consist of main valve (1) with main spool insert (3) and pilot valve (2) with pressure adjustment element.

At rest, the valves are open, fluid can freely pass from port B to port A via the main spool insert (3).

Pressure present in port A acts upon the bottom side of the main spool. At the same time there is pressure acting on the ball (6) in the

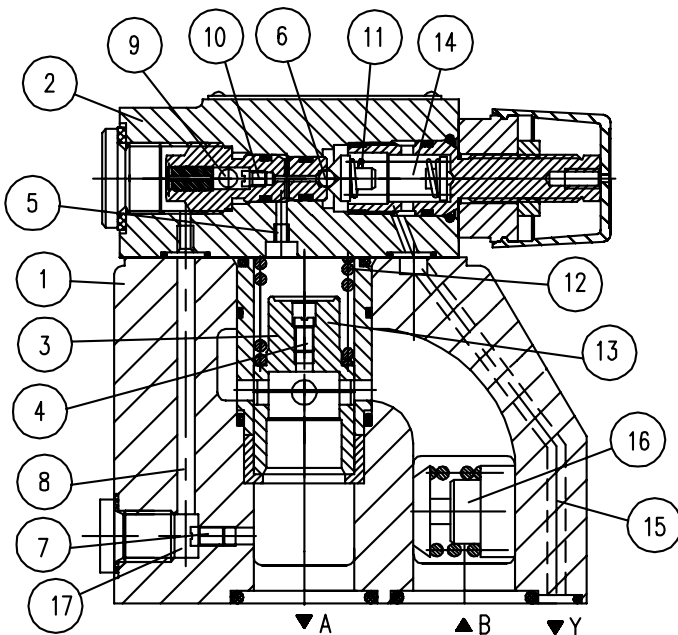
pilot valve (2) via the orifice (4) on the spring-loaded side of the main piston (3) and via the port (5). Pressure from port A is also acting on the ball (6) via the orifice (7), control line (8), check valve (9) and orifice (10). According to setting of spring (11), pressure builds up in front of the ball (6), in port (5) and in spring chamber (12), holding the control piston (13) in the open position. Fluid can freely flow from port B to port A via main spool insert (3), until the pressure in port A exceeds the value set at spring (11) and opens the ball (6). The control piston (13) moves to closing position.

The desired reduced pressure is achieved, when a balance between the pressure in port A and the pressure set at spring (11) is reached.

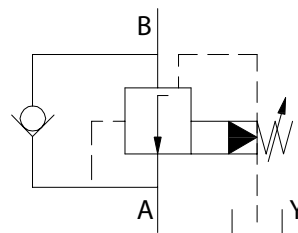
Pilot oil drain from spring chamber (14) to tank takes place externally via control line (15).

Free return flow from port A to B can be achieved by installing an optional check valve (16).

A pressure gauge connection (17) allows the reduced pressure in port A to be monitored.

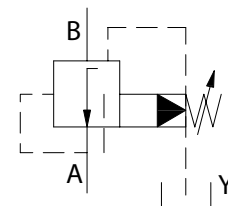


Functional Symbols



XCG

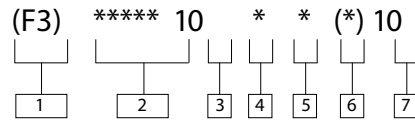
(with check valve)



XG

(without check valve)

Series X(C)G2V-10 Model Code



1 Seal Options
Blank – Nitrile, for Mineral oil
Anti-wear hydraulic oil (class L-HFC), Water glycol (class L-HFC)
F3 = Fluorocarbon seals, for Phosphate Ester (class L_HFD)

2 Two stage reducing valve, Gasket mounted, 350 bar rated
XCG2V - With reverse flow check
XG2V - Without reverse flow check

3 Size
ISO6264-10
NFPA/ANSI R10
10 - Cetop 10

4 Pressure Range
B - 50 bar
C - 100 bar
F - 200 bar
G - 315 bar

5 Adjustment
W - Wrench and cover
H - Knob
K - Lockable knob

6 External port thread
F - Metric
B - BSP

7 Design Number
10

Series X(C)G2V-10

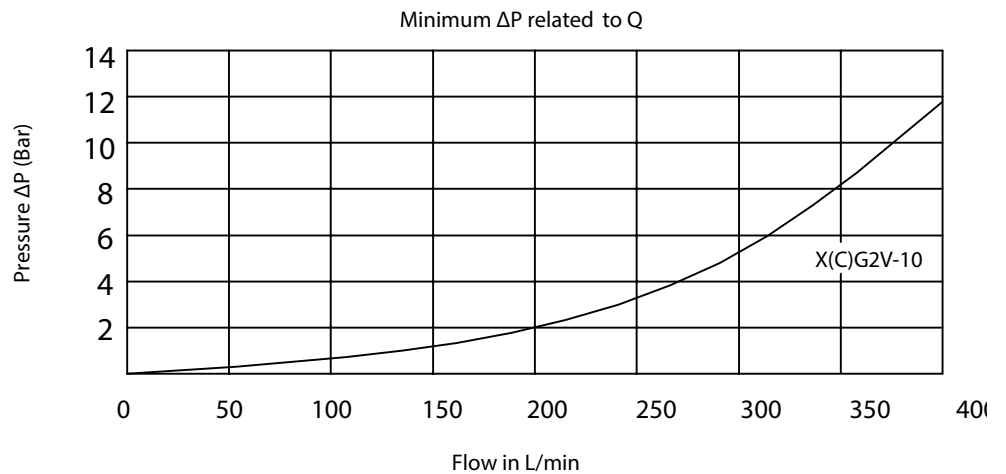
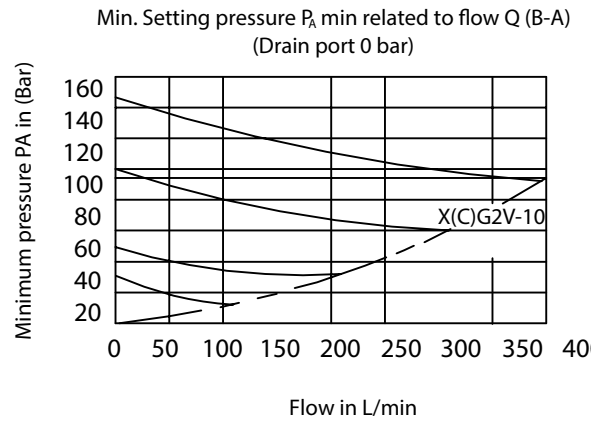
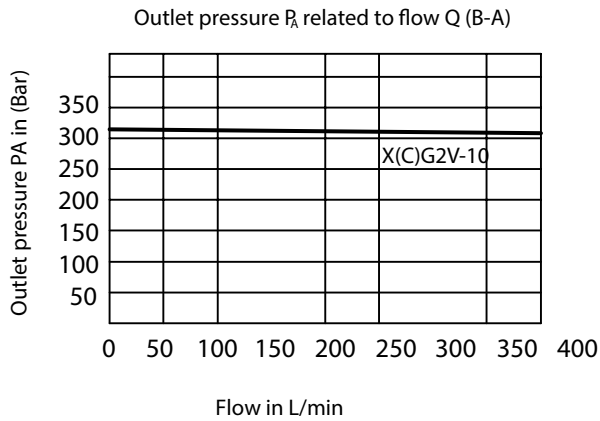
Technical Data

Hydraulic Technical Data

Inlet pressure, port B	up to 315 bar
Outlet pressure, port A	10 to 315 bar
Drain, port Y	up to 315 bar
Maximum Flow	400 L/min.
Fluid	Fluid Mineral oils to (HL, HLP) DIN 51 524; Phosphate ester (HFD-R)
Fluid temperature range (°C)	-30 up to + 80 (with Nitrile seals) -20 to + 80 (with Fluorocarbon seals)
Fluid Viscosity range (mm ² /s)	10 to 800
Fluid Cleanliness Level	ISO 19/17/14

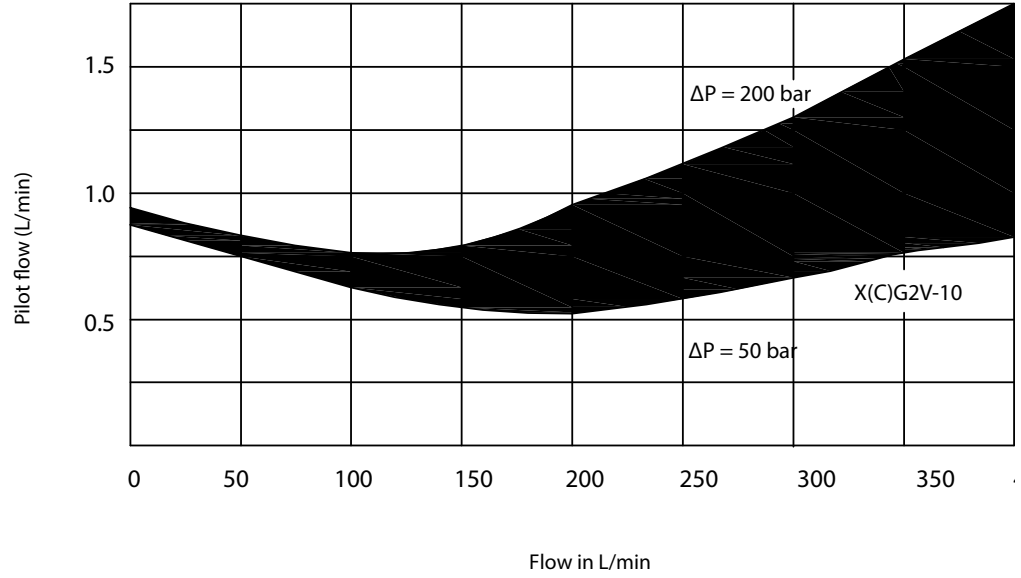
Flow Curves

(measured at $\nu = 41$ mm²/s and $t = 50^\circ\text{C}$)

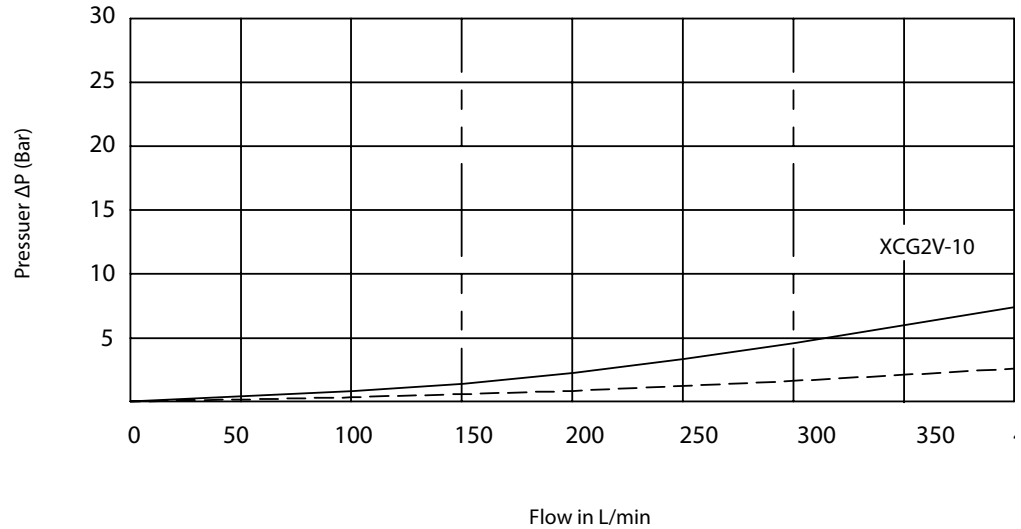


Series X(C) G2V-10
 Flow Curves
 (measured at $v = 41$
 mm^2/s and $t = 50^\circ\text{C}$)

Pilot flow related to flow (B-A) and to pressure ΔP

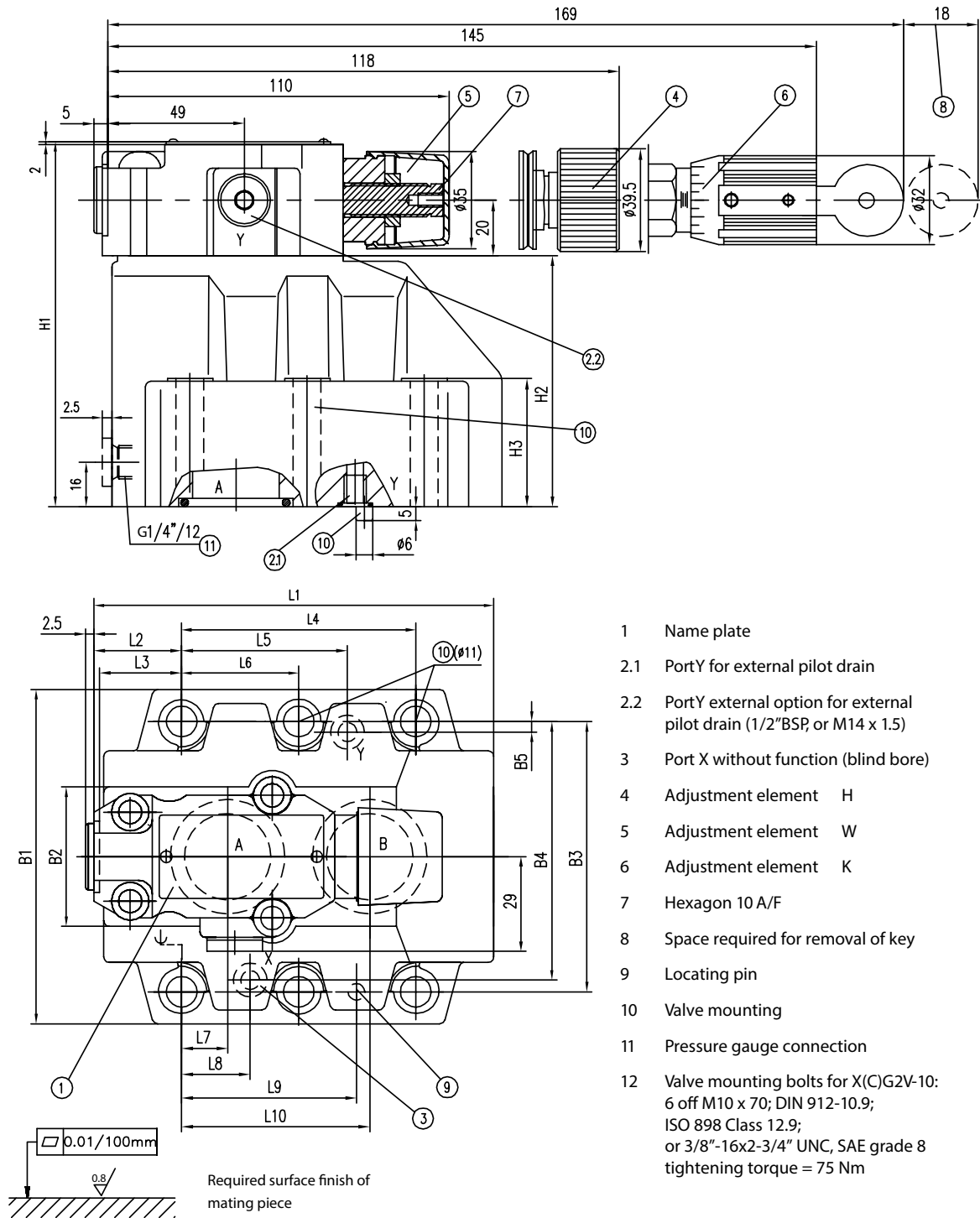


Pressure drop across check valve for reverse flow



————— ΔP of reverse flow with main stage closed
 - - - - - ΔP of reverse flow with main stage fully open

Series X(C)G2V-10
Dimensions mm (inch)



- 1 Name plate
- 2.1 Port Y for external pilot drain
- 2.2 Port Y external option for external pilot drain (1/2" BSP, or M14 x 1.5)
- 3 Port X without function (blind bore)
- 4 Adjustment element H
- 5 Adjustment element W
- 6 Adjustment element K
- 7 Hexagon 10 A/F
- 8 Space required for removal of key
- 9 Locating pin
- 10 Valve mounting
- 11 Pressure gauge connection
- 12 Valve mounting bolts for X(C)G2V-10:
6 off M10 x 70; DIN 912-10.9;
ISO 898 Class 12.9;
or 3/8"-16x2-3/4" UNC, SAE grade 8
tightening torque = 75 Nm

Size	L1	L2	L3	L4	L5	L6	L7	L8	L9	L10	B1	B2	B3	B4	B5	H1	H2	H3	O-ring(port A, B),	O-ring(port X,Y)
10	145	33	29.8	84.2	59.5	42.1	16.7	24.6	62.7	67.5	120	76	96.8	92.8	3.8	130	110	46	34.52x3.53	9.25x1.78

Application Notes

1. The fluid must be filtered. The required fluid cleanliness level is ISO 19/17/14.
2. Surface finish of mating piece is required to 0.01/100mm.
3. Interface Seal Kit # for X(C)G2V-10
02-412610, Nitrile
02-412609, Fluorocarbon
4. Bolt kit for X(C)G2V-10
(6) M10x70 m
(6) 3/8"-16x2-3/4" UNC
MA=430Nm (317 lb-ft)
5. Mounting bolts must be to DIN 912-10.9 class, or Class 12.9 (ISO 898), or SAE Grade 8.

Released Part Numbers

Assembly Number	Model Code
02-412641	XCG2V-10CW-B-10
02-412642	F3-XCG2V-10CW-B-10
02-412643	XCG2V-10FW-B-10
02-412644	XG2V-10FW-B-10
02-412645	F3-XCG2V-10FW-B-10
02-412646	XCG2V-10GW-B-10
02-412647	XCG2V-10BW-B-10
02-412648	F3-XCG2V-10BW-B-10

Bold items have better lead-time

Products we offer:

- Cartridge valves
- DCV directional control valves
- Electric converters
- Electric machines
- Electric motors
- Gear motors
- Gear pumps
- Hydraulic integrated circuits (HICs)
- Hydrostatic motors
- Hydrostatic pumps
- Orbital motors
- PLUS+1® controllers
- PLUS+1® displays
- PLUS+1® joysticks and pedals
- PLUS+1® operator interfaces
- PLUS+1® sensors
- PLUS+1® software
- PLUS+1® software services, support and training
- Position controls and sensors
- PVG proportional valves
- Steering components and systems
- Telematics

Hydro-Gear

www.hydro-gear.com

Daikin-Sauer-Danfoss

www.daikin-sauer-danfoss.com

Danfoss Power Solutions is a global manufacturer and supplier of high-quality hydraulic and electric components. We specialize in providing state-of-the-art technology and solutions that excel in the harsh operating conditions of the mobile off-highway market as well as the marine sector. Building on our extensive applications expertise, we work closely with you to ensure exceptional performance for a broad range of applications. We help you and other customers around the world speed up system development, reduce costs and bring vehicles and vessels to market faster.

Danfoss Power Solutions – your strongest partner in mobile hydraulics and mobile electrification.

Go to www.danfoss.com for further product information.

We offer you expert worldwide support for ensuring the best possible solutions for outstanding performance. And with an extensive network of Global Service Partners, we also provide you with comprehensive global service for all of our components.

Local address:

**Danfoss
Power Solutions (US) Company**
2800 East 13th Street
Ames, IA 50010, USA
Phone: +1 515 239 6000

**Danfoss
Power Solutions GmbH & Co. OHG**
Krokamp 35
D-24539 Neumünster, Germany
Phone: +49 4321 871 0

**Danfoss
Power Solutions ApS**
Nordborgvej 81
DK-6430 Nordborg, Denmark
Phone: +45 7488 2222

**Danfoss
Power Solutions Trading
(Shanghai) Co., Ltd.**
Building #22, No. 1000 Jin Hai Rd
Jin Qiao, Pudong New District
Shanghai, China 201206
Phone: +86 21 2080 6201

Danfoss can accept no responsibility for possible errors in catalogues, brochures and other printed material. Danfoss reserves the right to alter its products without notice. This also applies to products already on order provided that such alterations can be made without subsequent changes being necessary in specifications already agreed. All trademarks in this material are property of the respective companies. Danfoss and the Danfoss logotype are trademarks of Danfoss A/S. All rights reserved.