

ENGINEERING
TOMORROW

Danfoss

User Guide

CoolConfig ICAD Operating manual



Scanning and connecting

1

Available devices
INITIATE SCAN

Danfoss Bluetooth devices

LLS 4000 is discoverable immediately after a power cycle. ICAD can be found whenever within range and Bluetooth enabled.

Start scanning

2

Available devices
SCANNING

Searching for Danfoss Bluetooth devices

3

Available devices
SCAN COMPLETE

Device 1 (ICAD)
SN 9800002892222

Alarm
80 %
Auto

Identify

Name: Not config (ICAD)
SN 9800002892224 (new)

Warning
N/A
Config

Identify

Device 4 (LLS)
SF1900000000000070

OK
Liquid
Relay open

Use 'Identify' to have an ICAD light up in blue and verify that this is the one you want to connect to.

Did the device you are looking for not show up?

4

ICAD will flash blue for 15 seconds when clicking the 'Identify' button. Utilize this when you are unsure which one to choose.

5

Available devices
SCAN COMPLETE

Device 1 (ICAD)
SN 9800002892222

Alarm
80 %
Auto

Identify

Name: Not config (ICAD)
SN 9800002892224 (new)

Warning
N/A
Config

Identify

Device 4 (LLS)
SF1900000000000070

OK
Liquid
Relay open

Use 'Identify' to have an ICAD light up in blue and verify that this is the one you want to connect to.

Did the device you are looking for not show up?

6

ICAD

Enter PIN to access Device 1

0 0 0 0

1	2 ABC	3 DEF
4 GHI	5 JKL	6 MNO
7 PQRS	8 TUV	9 WXYZ

NOTE: The connection PIN is **0000** and serves to ensure that the connection is intentionally. Access is then read-only.

Entering home screen - content and navigation (in details)

Signal strength

ICAD name

Menu

7

Device 1
READ ONLY - LOG IN FOR SERVICE MODE

80 % open

Auto

ALARMS 2

Service interval overdue
10:09 - today
Check valve

A9 Preventive Operational Mode
10:21 - 1 day ago
Too high torque

I/O POINT	FUNCTION	STATUS
AI	Control	0,5 V
AO	Valve position output	0,1 mA
DO (A)	Alarm relay	ON

SERVICE OVERDUE ✘

0 days

TYPE	SUPPLY	STATUS
	24 V DC	21 V
	UPS	OK

Status Alarms Service Info

Actual opening degree

Status: Manual/Auto/Calibration/Safe state

Currently active alarm count

Input and output readouts (matches the current ICAD operation mode)

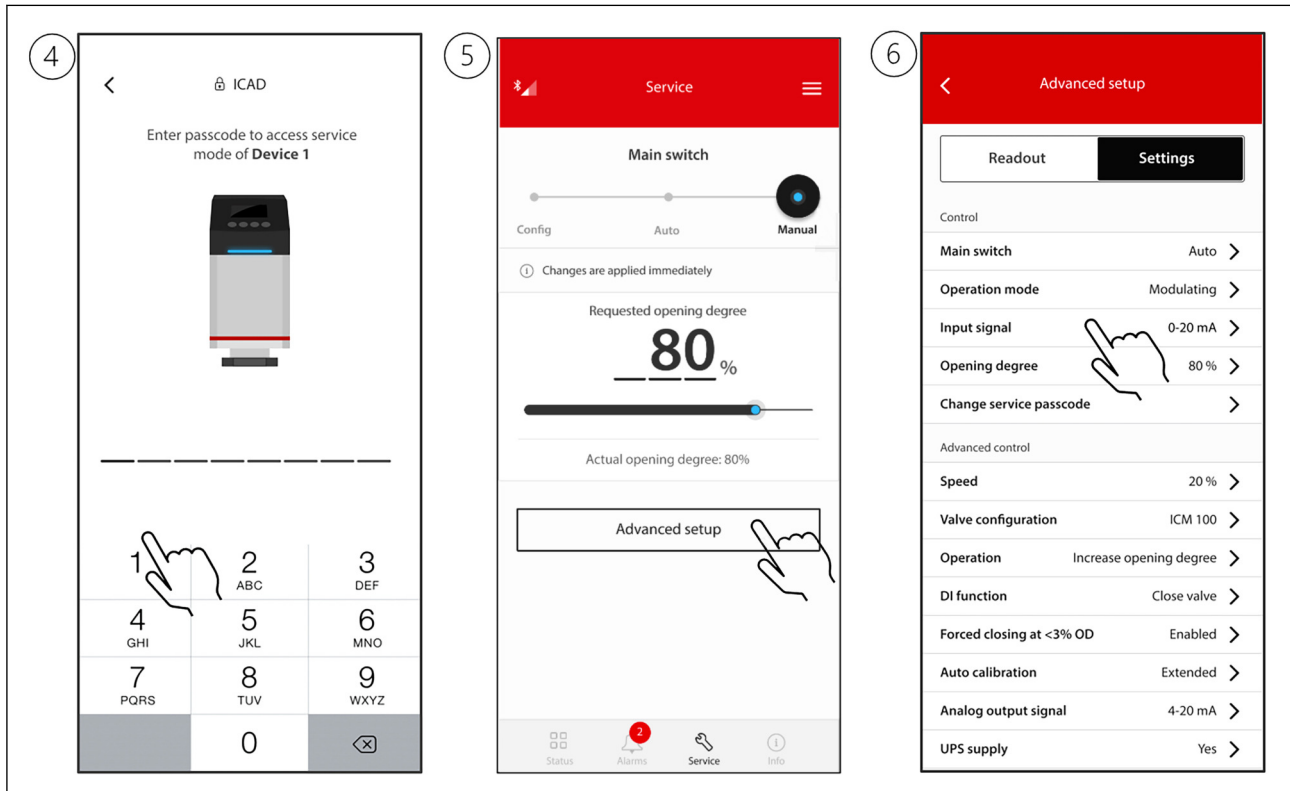
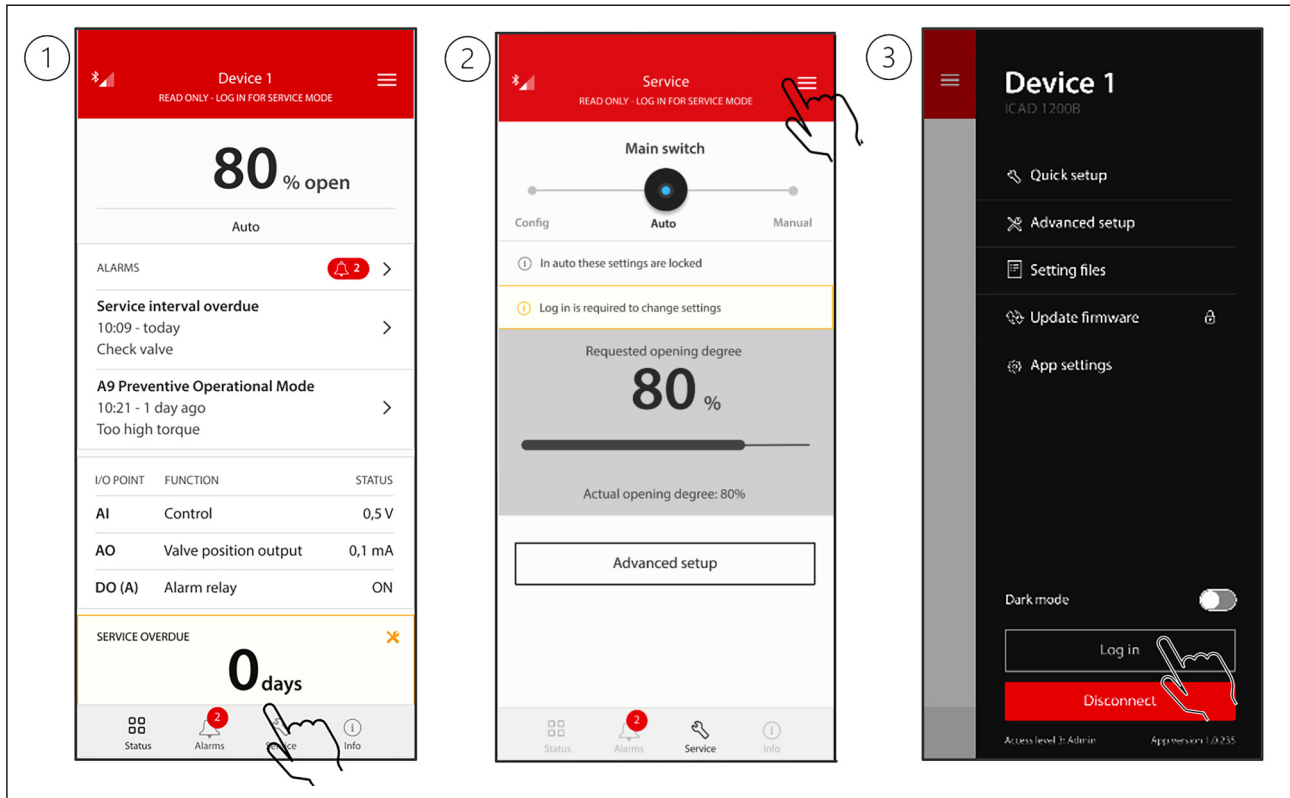
Service reminder status. When service is overdue, the valve is recommended to be serviced

Actual power supply input

Health of Uninterruptable Power Supply if this has been enabled

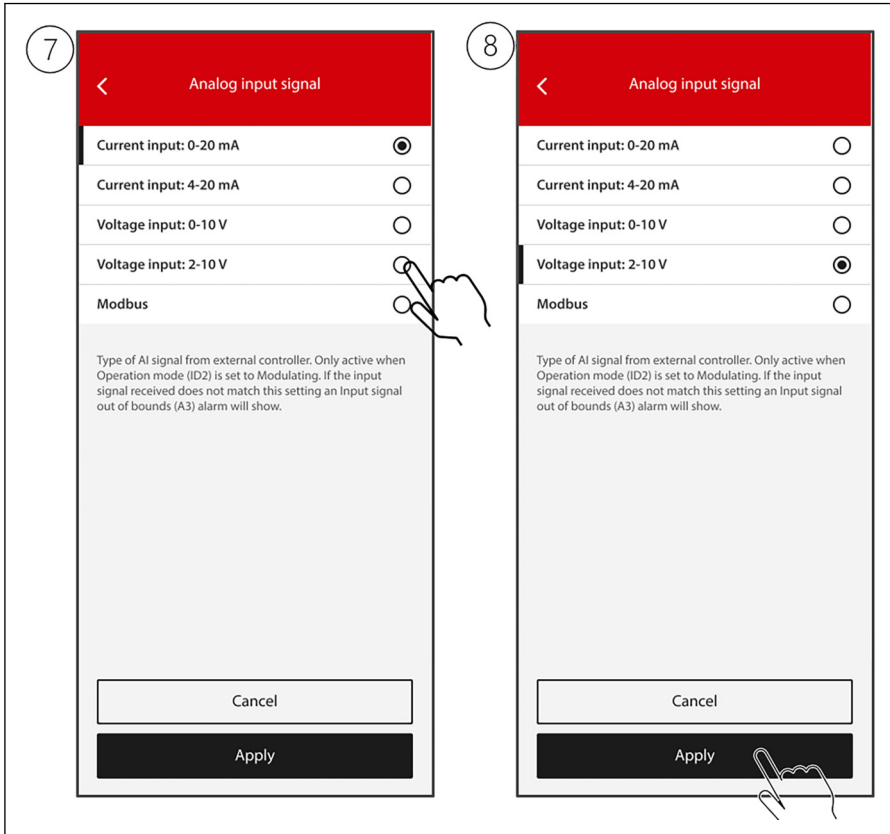
Navigation to menu groups

Login and configuration changes (when connected)

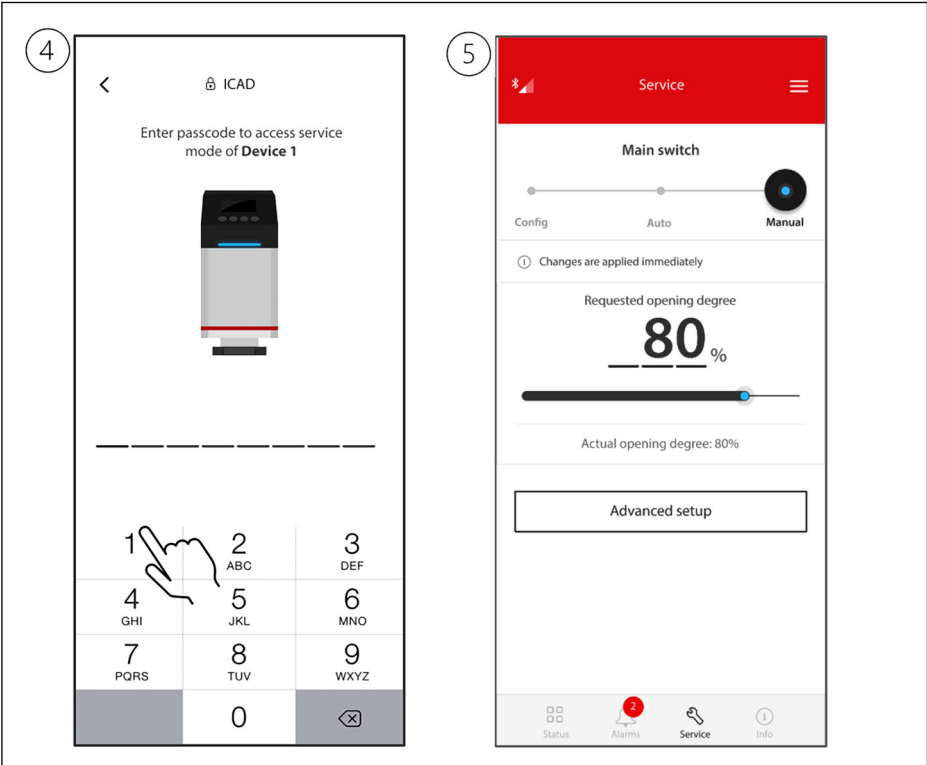
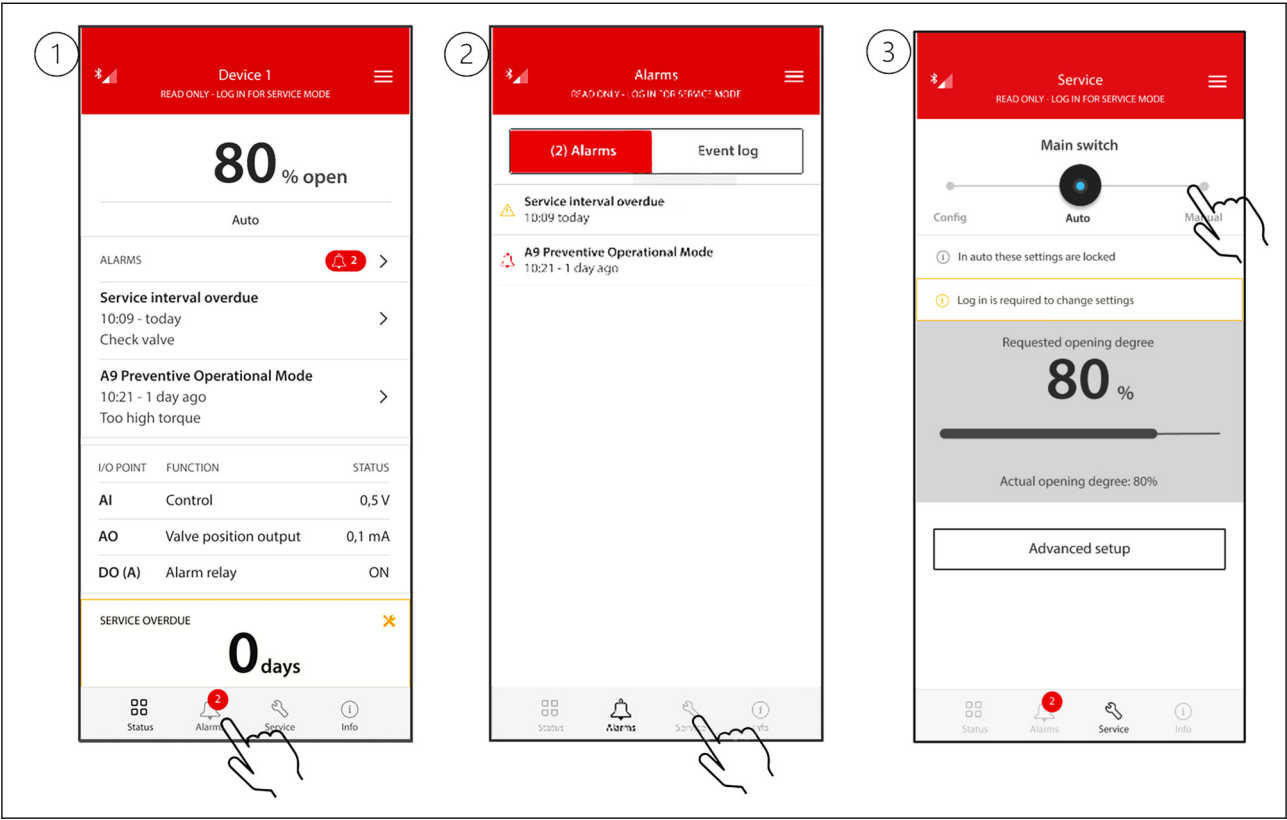


NOTE:

Passcode is **12131400** by factory default. This can have been changed during commissioning of ICAD. In case you forget a custom configured passcode, the only option is to factory reset ICAD.

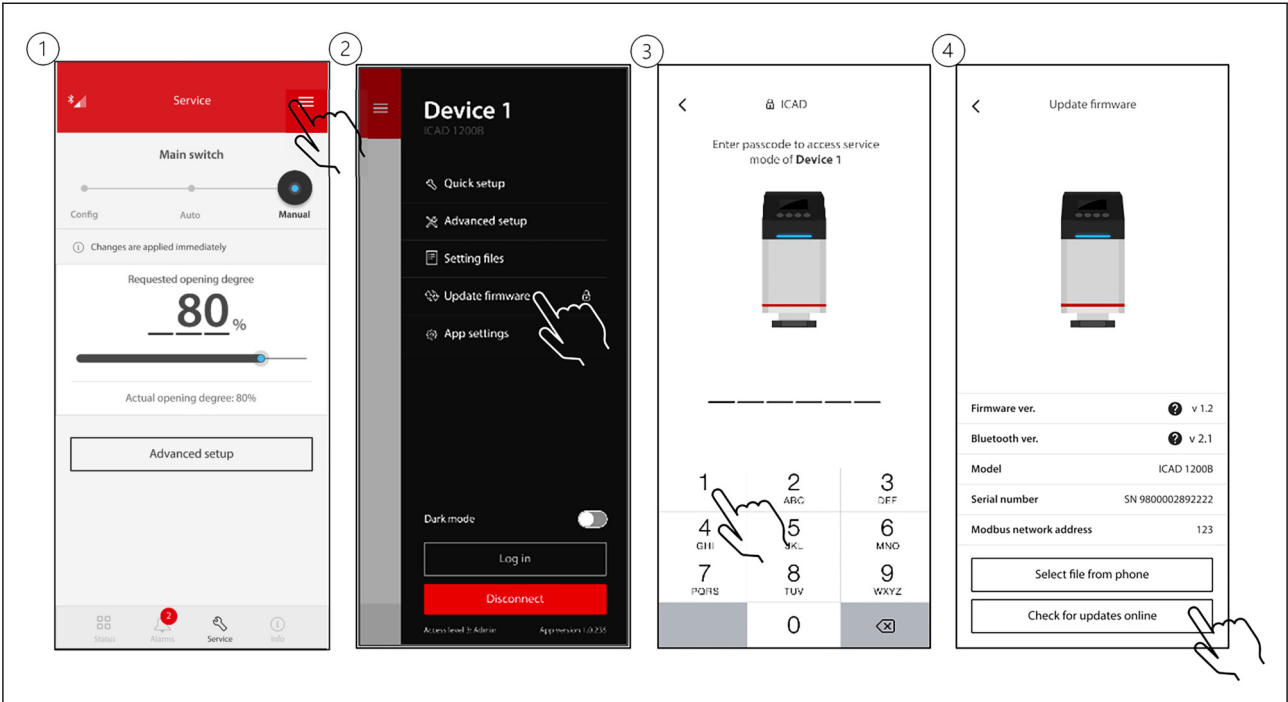


See alarms and set a manual opening degree (when connected)



NOTE: Passcode is **12131400** by factory default. This can have been changed during commissioning of ICAD. In case you forget a custom configured passcode, the only option is to factory reset ICAD.

Firmware update (when connected)




NOTE: ICAD must be in manual mode to initiate firmware update.

Passcode is **12131400** by factory default. This can have been changed during commissioning of ICAD. In case you forget a custom configured passcode, the only option is to factory reset ICAD.

5

Update firmware



Firmware ver.	v 1.2
Model	ICAD 1200B

⚠ Ensure power is not interrupted during this process, and to stay within range of the ICAD.

After completing this action, it is recommended to inspect system operational status to confirm correct control and operation

6

Update firmware
CONNECTION IS GOOD



0%

⚠ Update in progress
Ensure power is not interrupted during this process, and to stay within range of the ICAD.
After completing this action, it is recommended to inspect system operational status to confirm correct control and operation

7

Complete
UPDATE SUCCESSFUL



Firmware ver.	v 1.2
Model	ICAD 1200B
Serial number	SN 9800002892222
Modbus network address	123

i ICAD automatically reboots now. This means you need to rescan and reconnect.
Remember to set ICAD main switch back to 'auto' if this was the previous setting.

Online support

Danfoss offers a wide range of support along with our products, including digital product information, software, mobile apps, and expert guidance. See the possibilities below.

The Danfoss Product Store



The Danfoss Product Store is your one-stop shop for everything product related—no matter where you are in the world or what area of the cooling industry you work in. Get quick access to essential information like product specs, code numbers, technical documentation, certifications, accessories, and more.

Start browsing at store.danfoss.com.

Find technical documentation



Find the technical documentation you need to get your project up and running. Get direct access to our official collection of data sheets, certificates and declarations, manuals and guides, 3D models and drawings, case stories, brochures, and much more.

Start searching now at www.danfoss.com/en/service-and-support/documentation.

Danfoss Learning



Danfoss Learning is a free online learning platform. It features courses and materials specifically designed to help engineers, installers, service technicians, and wholesalers better understand the products, applications, industry topics, and trends that will help you do your job better.

Create your Danfoss Learning account for free at www.danfoss.com/en/service-and-support/learning.

Get local information and support



Local Danfoss websites are the main sources for help and information about our company and products. Find product availability, get the latest regional news, or connect with a nearby expert—all in your own language.

Find your local Danfoss website here: www.danfoss.com/en/choose-region.

Spare Parts



Get access to the Danfoss spare parts and service kit catalog right from your smartphone. The app contains a wide range of components for air conditioning and refrigeration applications, such as valves, strainers, pressure switches, and sensors.

Download the Spare Parts app for free at www.danfoss.com/en/service-and-support/downloads.

Coolselector®2 - find the best components for you HVAC/R system



Coolselector®2 makes it easy for engineers, consultants, and designers to find and order the best components for refrigeration and air conditioning systems. Run calculations based on your operating conditions and then choose the best setup for your system design.

Download Coolselector®2 for free at coolselector.danfoss.com.

Danfoss A/S

Climate Solutions • danfoss.com • +45 7488 2222

Any information, including, but not limited to information on selection of product, its application or use, product design, weight, dimensions, capacity or any other technical data in product manuals, catalogues descriptions, advertisements, etc. and whether made available in writing, orally, electronically, online or via download, shall be considered informative, and is only binding if and to the extent, explicit reference is made in a quotation or order confirmation. Danfoss cannot accept any responsibility for possible errors in catalogues, brochures, videos and other material. Danfoss reserves the right to alter its products without notice. This also applies to products ordered but not delivered provided that such alterations can be made without changes to form, fit or function of the product.

All trademarks in this material are property of Danfoss A/S or Danfoss group companies. Danfoss and the Danfoss logo are trademarks of Danfoss A/S. All rights reserved.