

# Check Valves

## 4CKKT50

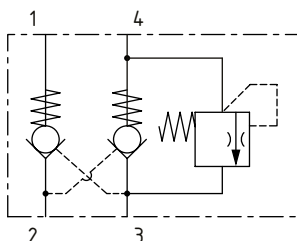
Dual Pilot Operated Check Valve, with Thermal Relief

300 bar [4300 psi] • 25 l/min [7 US gpm]

### DESCRIPTION AND OPERATION

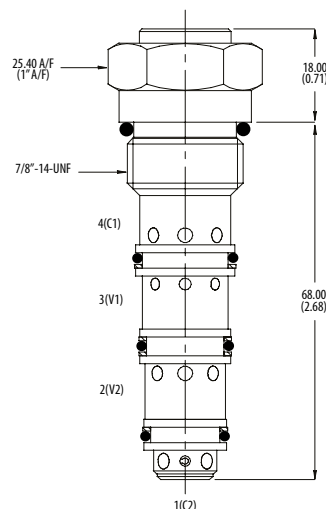
This is a dual pilot operated check valve where free flow takes place from port 2 to 1 and port 3 to 4. Flow is blocked from port 1 to 2 until pressure is applied to port 3 and blocked from port 4 to 3 until pressure is applied to port 2. This valve has the addition of a thermal relief valve that will open from port 4 to 3 if the pressure exceeds the setting.

### SCHEMATIC



### DIMENSIONS

mm [in]



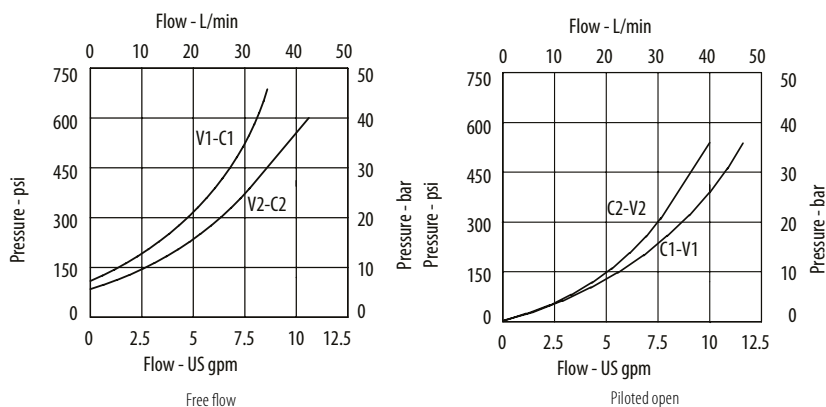
Installation torque  
30 Nm [22 ft. lbs]

### PERFORMANCE DATA

Rated pressure	300 bar [4300 psi]
Rated flow	25 l/min [7 US gpm]
Weight	0.08 kg [0.18 lbs]
Pilot Ratio	3:1
Leakage	C1-V1 1.0 ml/min nominal [15 dpm] C2-V2 0.3 ml/min nominal [5 dpm]
Cavity	A12744

### PERFORMANCE CURVES

#### Pressure drop



### MODEL CODE

**4CKKT50 - 3W - 3 - S - 3 - 28**

#### Basic Code

4CKKT50-No Housing  
4CKKT55-Cartridges and Dual Housing

#### Housing

Code	Ports	Housing Model Code
<b>Aluminium dual</b>		
Omit	No Housing	
3W	3/8" BSP	B19240
6T	3/8" SAE	B19241
4W	1/2" BSP	B19228
8T	1/2" SAE	B19229

\*Aluminum bodies are to be used for pressures less than 210 bar [3000 psi]  
\* Additional housings available

#### Pilot Ratio

3-3:1

#### Pressure Setting

Code	Bar	Psi
24	240	[3500]
28	280	[4000]
35	350	[5000]

#### Pilot Seal Option

3 -Seals  
Omit -No seals

#### Seal Option

Code	Seal kit
S-Nitrile	SK1120
SV-Viton	SK1120V