

Check Valves

4SK140

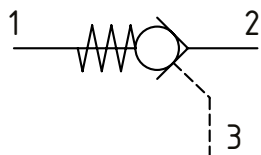
Pilot Operated Check Valve, Port 3 Pilot to Open

350 bar [5000 psi] • 140 l/min [37 US gpm]

DESCRIPTION AND OPERATION

This is a pilot operated check valve where free flow takes place from port 2 to 1 and is blocked from port 1 to 2 until pilot pressure is applied to port 3.

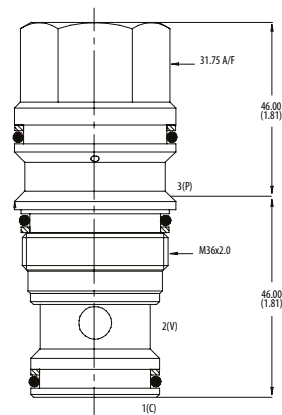
SCHEMATIC



DIMENSIONS

mm [in]

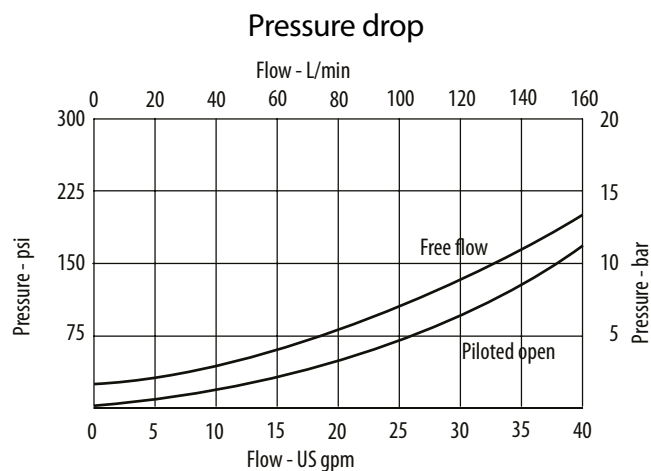
Installation torque
200 Nm [150 ft. lbs]



PERFORMANCE DATA

Rated pressure	350 bar [5000 psi]
Rated flow	140 l/min [37 US gpm]
Weight	0.44 kg [0.96 lbs.]
Pilot Ratio	3:1
Leakage	0.3 m l/min nominal [5 dpm]
Cavity	A20094-T17A

PERFORMANCE CURVES



MODEL CODE

4SK140 - 3 - S - 3

Pilot Ratio

3 -3:1

Seal Option

Code	Seal kit
S-Nitrile	SK1116
SV-Viton	SK1116V

Pilot Seal Option

Omit -No seals
3 -Seals