

Check Valves

5CK120

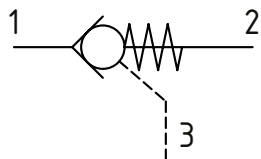
Pilot Operated Check Valve, Port 3 Pilot to Close

350 bar [5000 psi] • 120 l/min [32 US gpm]

DESCRIPTION AND OPERATION

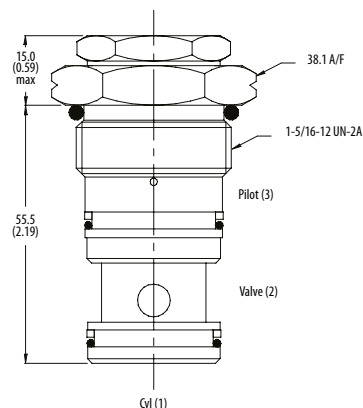
This is a pilot to close check valve where flow is blocked between port 2 and 1 and free flow takes place from port 1 to 2 until pilot pressure is applied to port 3.

SCHEMATIC



DIMENSIONS

mm [in]

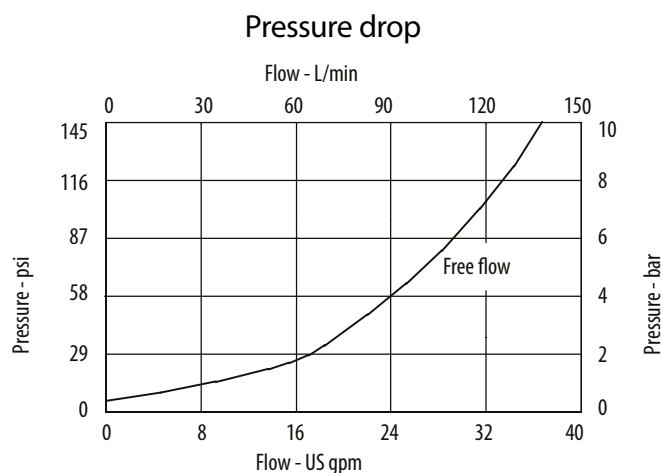


Installation torque
100 Nm [74 ft. lbs]

PERFORMANCE DATA

Rated pressure	350 bar [5000 psi]
Rated flow	120 l/min [32 US gpm]
Weight	0.28 kg [0.62 lbs]
Pilot Ratio	2:1
Leakage	0.3 ml/min nominal [5 dpm]
Cavity	A877

PERFORMANCE CURVES



MODEL CODE

5CK120 - 1 - 3W - S - 2 - 377

Basic Code

5CK120-No Housing
5CK125-Cartridge and Housing

Pilot Option

1-Internal

Housing

Code	Ports	Housing Model Code	
		Aluminum	Steel
Omit	No Housing		
6W	3/4" BSP 1/4" BSP/SAE Pilot Port	B6898	B5544
12T	3/4" SAE 1/4" SAE Pilot Port	B8200	
16T	1" SAE 1/4" SAE Pilot Port	B10708	B11814

*Aluminum bodies are to be used for pressures less than 210 bar [3000 psi]
*Additional housings available

Housing Material

Omit-Aluminum/No housing
377-Steel

Pilot Ratio

2-2:1

Seal Option

Code	Seal kit
S-Nitrile	SK833
SV-Viton	SK833V