

Check Valves

5CK300

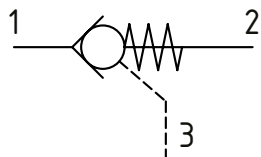
Pilot Operated Check Valve, Port 3 Pilot to Close

350 bar [5000 psi] • 250 l/min [65 US gpm]

DESCRIPTION AND OPERATION

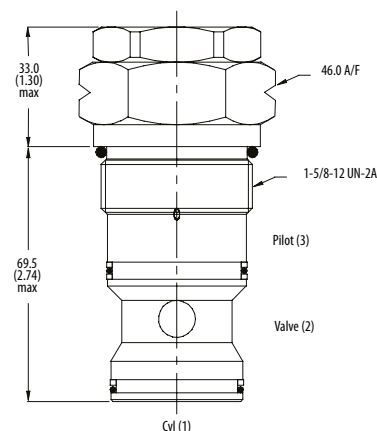
This is a pilot to close check valve where flow is blocked between port 2 and 1 and free flow takes place from port 1 to 2 until pilot pressure is applied to port 3.

SCHEMATIC



DIMENSIONS

mm [in]

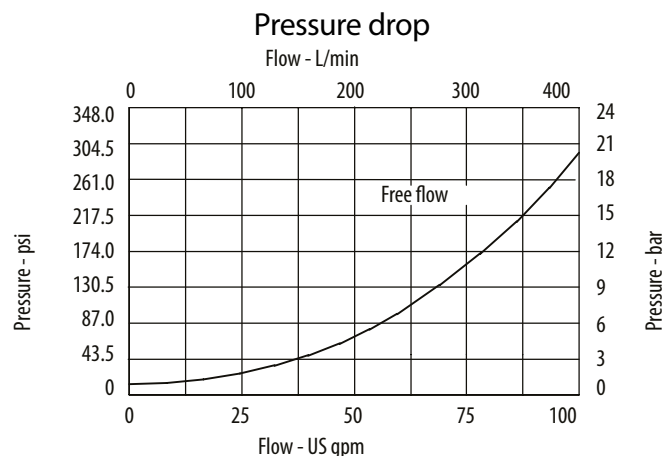


Installation torque
150 Nm [110 ft. lbs]

PERFORMANCE DATA

Rated pressure	350 bar [5000 psi]
Rated flow	250 l/min [65 US gpm]
Weight	0.73 kg [1.61 lbs]
Pilot Ratio	2:1
Leakage	0.3 ml/min nominal [5 dpm]
Cavity	A6935

PERFORMANCE CURVES



MODEL CODE

5CK300 - 1 - 10W - S - 2 - 377

<p>Basic Code</p> <p>5CK300 - No Housing 5CK350 - Cartridge and housing</p> <p>Pilot Option</p> <p>1 - Internal</p> <p>Housing</p> <table border="1"> <thead> <tr> <th>Code</th> <th>Ports</th> <th colspan="2">Housing Model Code</th> </tr> <tr> <th>Omit</th> <td>No Housing</td> <th>Aluminum</th> <th>Steel</th> </tr> </thead> <tbody> <tr> <td>10W</td> <td>1 1/4" BSP 1/4" BSP/SAE Pilot Port</td> <td>B6814</td> <td>B8610</td> </tr> <tr> <td>20T</td> <td>1 1/4" SAE 1/4" BSP/SAE Pilot Port</td> <td>B10630</td> <td>B11474</td> </tr> </tbody> </table> <p><small>* Aluminum bodies are to be used for pressures less than 210 bar [3000 psi] * Additional housings available</small></p>	Code	Ports	Housing Model Code		Omit	No Housing	Aluminum	Steel	10W	1 1/4" BSP 1/4" BSP/SAE Pilot Port	B6814	B8610	20T	1 1/4" SAE 1/4" BSP/SAE Pilot Port	B10630	B11474	<p>Housing Material</p> <p>Omit - Aluminum/No housing 377 - Steel</p> <p>Pilot Ratio</p> <p>2-2:1</p> <p>Seal Option</p> <table border="1"> <thead> <tr> <th>Code</th> <th>Seal kit</th> </tr> </thead> <tbody> <tr> <td>S - Nitrile</td> <td>SK834</td> </tr> <tr> <td>SV - Viton</td> <td>SK834V</td> </tr> </tbody> </table>	Code	Seal kit	S - Nitrile	SK834	SV - Viton	SK834V
Code	Ports	Housing Model Code																					
Omit	No Housing	Aluminum	Steel																				
10W	1 1/4" BSP 1/4" BSP/SAE Pilot Port	B6814	B8610																				
20T	1 1/4" SAE 1/4" BSP/SAE Pilot Port	B10630	B11474																				
Code	Seal kit																						
S - Nitrile	SK834																						
SV - Viton	SK834V																						