

Check Valves

CV6-10

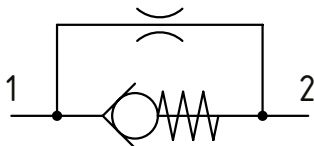
Check valve, Standard Direction with Bypass Orifice

350 bar [5000 psi] • 76 l/min [20 US gpm]

DESCRIPTION AND OPERATION

This is a check valve where free flow takes place from port 1 to 2 and is restricted by an internal orifice from port 2 to 1.

SCHEMATIC

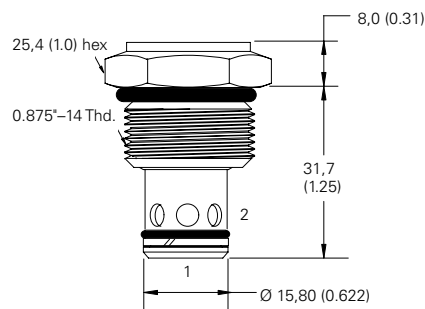


PERFORMANCE DATA

Rated pressure	350 bar [5000 psi]
Rated flow	76 l/min [20 US gpm]
Weight	0.04 kg [0.09 lbs.]
Cavity	SDC10-2

DIMENSIONS

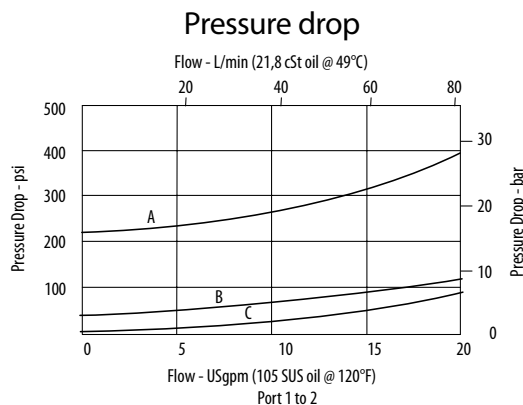
mm [in]



Installation torque

A-47-54 Nm [35-40 ft. lbs]
S-68-70 Nm [50-55 ft. lbs]

PERFORMANCE CURVES



A-CV6 10*P 000 210 00 • B-CV6 10*P 000 040 00 • C-CV6 10*P 000 003 00

MODEL CODE

CV6 - 10 - B - P - 0 - 003 - 3B - 015

Seal Option

Code	Seal Kit
N-Buna-N	889615
V-Viton	889619

Style
P-Poppet type

Housing Material

0-No Housing
A-Aluminum
S-Steel

Crack Pressure

Code	Bar	Psi
003	0.21	[3]
010	0.69	[10]
035	2.41	[35]
040	2.76	[40]
065	4.48	[65]
100	6.9	[100]
180	12.4	[180]
210	14.5	[210]

Orifice size

Specify in thousandths of an inch
015-.015" min
050-.050" max

Housing

Code	Ports	Housing Model Code		
		Aluminum standard duty	Aluminum heavy duty	Steel heavy duty
Omit	-No Housing			
3B	3/8" BSP	02-175462	-	-
6T	#6 SAE	566151	-	02-175100
8T	#8 SAE	-	-	02-175101
2G	1/4" BSP	-	876702	02-175102
3G	3/8" BSP	-	876703	02-175103
6H	#6 SAE	-	876700	-
8H	#8 SAE	-	876701	-

*Aluminum bodies are to be used for pressures less than 210 bar [3000 psi]
*Additional housings available