

Check Valves

CV6-4

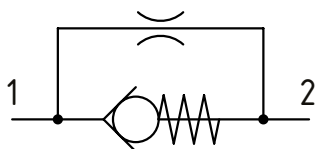
Check valve, Standard Direction with Bypass Orifice

350 bar [5000 psi] • 7.6 l/min [2 US gpm]

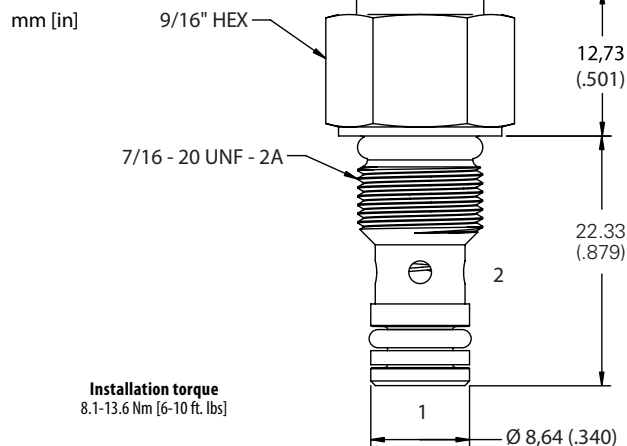
DESCRIPTION AND OPERATION

This is a check valve where free flow takes place from port 1 to 2 and is restricted by an internal orifice from port 2 to 1.

SCHEMATIC



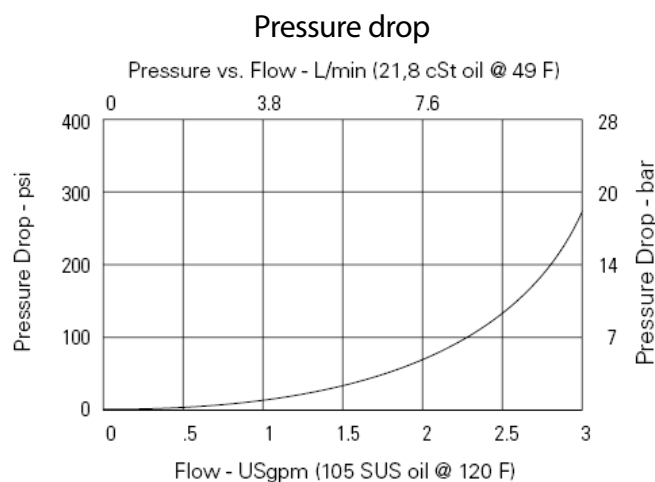
DIMENSIONS



PERFORMANCE DATA

Rated pressure	350 bar [5000 psi]
Rated flow	7.6 l/min [2 US gpm]
Weight	0.04 kg [0.09 lbs.]
Cavity	C-4-2

PERFORMANCE CURVES



MODEL CODE

CV6 - 4 - B - P - 000 - 5 - 015

Seal Option

Code	Seal kit
Omit-Buna-N	9900174-000
V-Viton	9900175-000

Style

P-Poppet type

Housing

000-No Housing

Orifice size

Specify in thousandths of an inch
015-.015" min
050-.050" max

Crack Pressure

Code	Bar	Psi
05	0.34	[5]