

Check Valves

DPC2-8

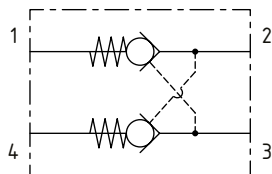
Dual Pilot Operated Check Valve

240 bar [3500 psi] • 19 l/min [5 US gpm]

DESCRIPTION AND OPERATION

This is a dual pilot operated check valve where free flow takes place from port 2 to 1 and port 3 to 4. Flow is blocked from port 1 to 2 until pressure is applied to port 3 and blocked from port 4 to 3 until pressure is applied to port 2.

SCHEMATIC



PERFORMANCE DATA

Rated pressure	240 bar [3500 psi]
Rated flow	19 l/min [5 US gpm]
Weight	0,08 kg [0.18 lbs.]
Pilot Ratio	3:1
Leakage	
Ports 2 to 3 and 3 to 2:	140 cc/min. [8.5 in ³ /min.] @ 240 bar [3500 psi]
Ports 4 to 3 and 1 to 2:	5 drops/min. @ 240 bar [3500 psi]
Cavity	SDC08-4

MODEL CODE

DPC2 - 8 - U - A - 25 - A - 0

Seal Option

U-Urethane

Pilot Leakage

A-Standard

Crack Pressure

Code	Bar	Psi
25	1.7	[25]

Housing Material

0omit-No Housing
A-Aluminum
S-Steel

Housing

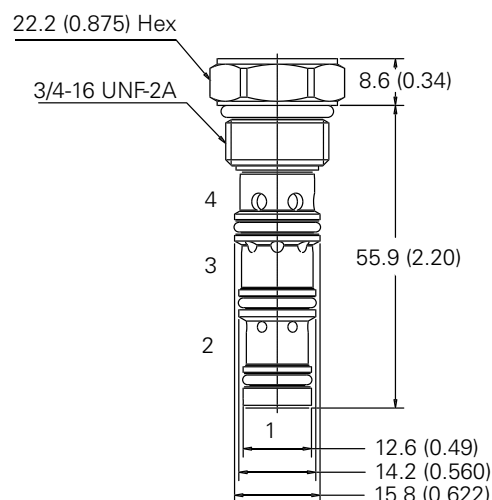
Code	Ports	Housing Model Code	
		Aluminum heavy duty	Steel heavy duty
0	No Housing		
2G	1/4" BSP	02-160747	02-160753
3G	3/8" BSP	02-160748	02-160754
4T	#4 SAE	02-160749	02-160751
6T	#6 SAE	02-160750	02-160752

*Aluminum bodies are to be used for pressures less than 210 bar [3000 psi]

*Additional housings available

DIMENSIONS

mm [in]



Installation torque
34-41 Nm [25-30 ft. lbs.]

PERFORMANCE CURVES

