

Check Valves

POC1-10

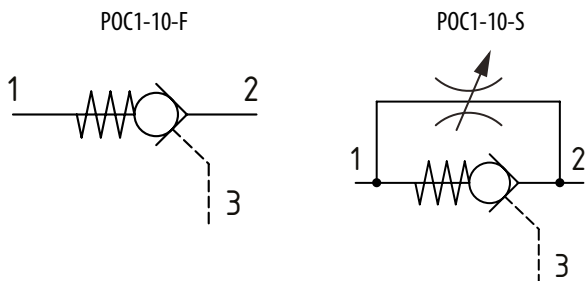
Pilot Operated Check Valve, Port 3 Pilot to Open

350 bar [5000 psi] • 57 l/min [15 US gpm]

DESCRIPTION AND OPERATION

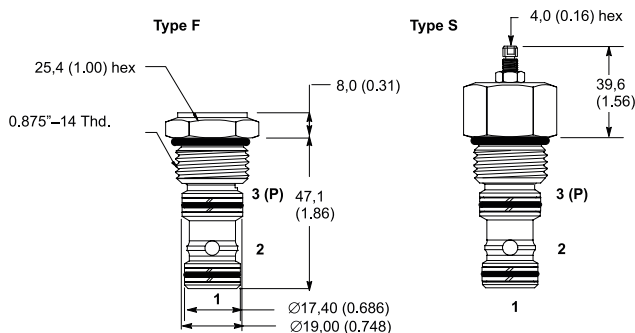
This is a pilot operated check valve where free flow takes place from port 2 to 1 and is blocked from port 1 to 2 until pilot pressure is applied to port 3.

SCHEMATIC



DIMENSIONS

mm [in]

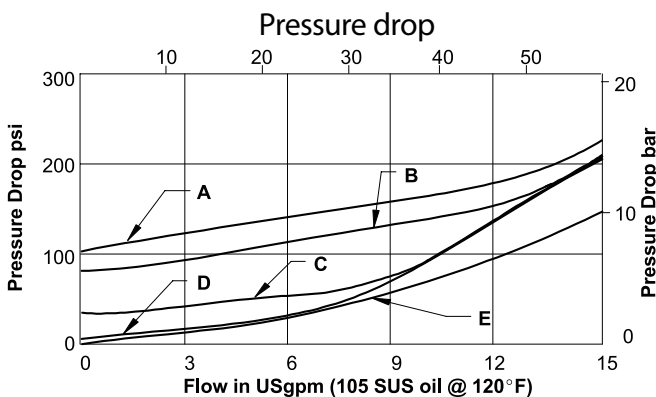


Installation torque
 A-47-54 Nm [35-40 ft. lbs]
 S-68-75 Nm [50-55 ft. lbs]

PERFORMANCE DATA

Rated pressure	350 bar [5000 psi]
Rated flow	57 l/min [15 US gpm]
Weight	0.17 kg [0.36 lbs] (without override): 0.10 kg [0.23 lbs]
Pilot Ratio	3:1
Leakage	< 5 drops/min @ 350 bar [5000 psi]
Cavity	SDC10-3S

PERFORMANCE CURVES



A-100 • B-075 • C-030 • D-005 • E-Full Pilot

MODEL CODE

POC1 - 10 - V - F - I - A - 6T - 005

Seal Option

Code	Seal kit
Omit-Buna-N	889650
V-Viton	889652

Override Option

F-Fixed
 S-External Override

Housing Option

O-No housing
 I-Cartridge and housing

Housing Material

Omit-No housing
 A-Aluminum
 S-Steel

Crack Pressure

Code	Bar	[Psi]
005	0.3	[5]
030	2.0	[30]
075	5.0	[75]
100	7.0	[100]

Housing

Ports	Code		
	Aluminum Standard duty	Aluminum Heavy duty	Steel
No Housing	Omit		
#6 SAE	6T	6H	6T
#8 SAE		8H	8T
#10 SAE			10T
1/4" BSP		2G	
3/8" BSP	3B	3G	3G
1/2" BSP			4G

* Aluminum bodies are to be used for pressures less than 210 bar [3000 psi].
 * Additional housings available