

Check Valves

RV4-10

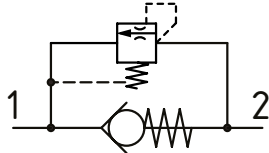
Check Valve, Standard Direction with Thermal Relief

350 bar [5000 psi] • 45 l/min [12 US gpm]

DESCRIPTION AND OPERATION

This is a check valve where free flow takes place from port 1 to 2 and is blocked from port 2 to 1. This valve has the addition of a thermal relief that will open from port 2 to 1 when the pre-set pressure is reached. This valve can be used in conjunction with a separate pilot piston and used on cylinder applications where thermal expansion of the oil could be an issue.

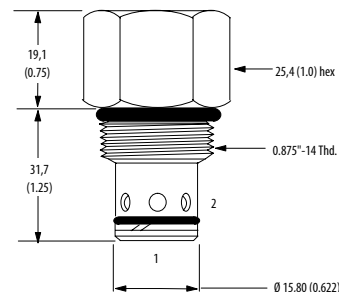
SCHEMATIC



DIMENSIONS

mm [in]

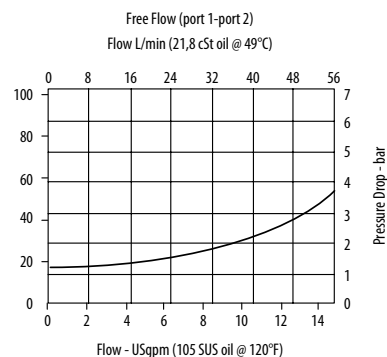
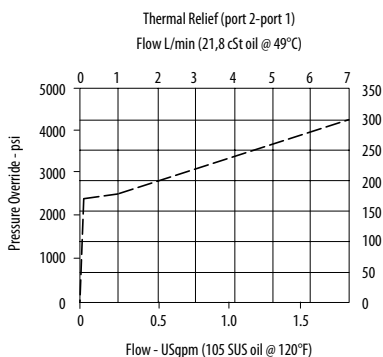
Installation torque
 A-47-54 Nm [35-40 ft. lbs]
 S-68-75 Nm [50-55 ft. lbs]



PERFORMANCE DATA

Rated pressure	350 bar [5000 psi]
Rated flow	45 l/min [12 US gpm]
Leakage	0.3 ml/min [5 drops/min]
Weight	0.11 kg [0.25 lb]
Cavity	SDC10-2

PERFORMANCE CURVES



MODEL CODE

RV4 - 10 - V - F - S - 0 - 50 - 10

Seal Option

Code	Seal Kit
Omit-Buna-N	565803
V-Viton	566086

Adjustment Option

F-Fixed

Housing Material

Omit-Aluminum/No housing
 S-Steel

Housing

Code	Ports	Housing Model Code		
		Aluminum Standard Duty	Aluminum Heavy Duty	Steel Heavy Duty
0	No Housing			
3B	3/8" BSP	02-175462	-	-
2G	1/4" BSP	-	876702	02-175102
3G	3/8" BSP	-	876703	02-175103
6H	#6 SAE	-	876700	-
8H	#8 SAE	-	876701	-
6T	#6 SAE	566151	-	02-175100
8T	#8 SAE	-	-	02-175101

*Aluminum bodies are to be used for pressures less than 210 bar [3000 psi]
 *Additional housings available

Pressure Setting

Code-x100-Pressure setting in psi (100 psi increments within specified Pressure Range)
 XXX-Standard setting (see Pressure Range for value)
 Example:

Code	Bar	Psi
10	70	[1000]
25	175	[2500]

Pressure Range

Code	Bar	Psi
50	28-350	[400-5000]