

# Check Valves

## SPC2-8

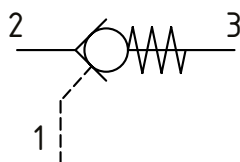
Pilot Operated Check Valve, Port 1 Pilot to Open

240 bar [3500 psi] • 19 l/min [5 US gpm]

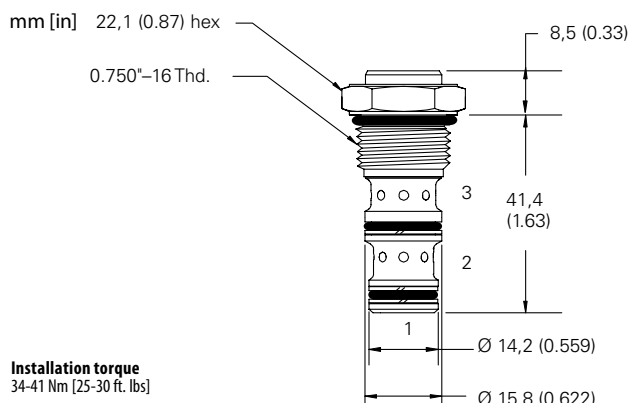
### DESCRIPTION AND OPERATION

This is a pilot operated check valve where free flow takes place from port 2 to 3 and is blocked from port 3 to 2 until pilot pressure is applied to port 1.

### SCHEMATIC



### DIMENSIONS



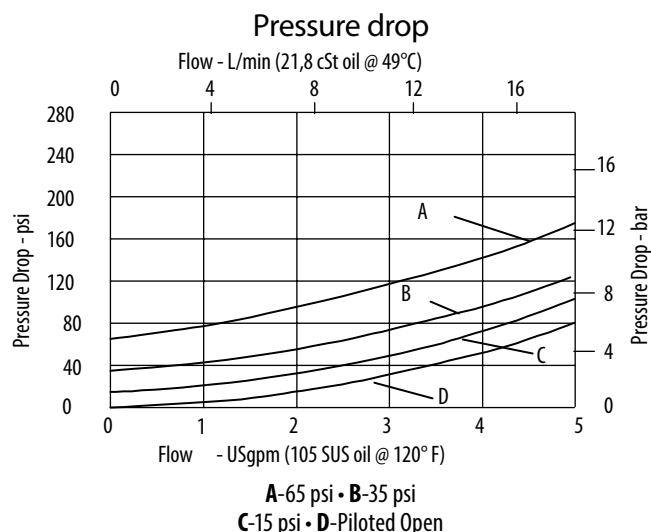
Installation torque  
34-41 Nm [25-30 ft. lbs]

### PERFORMANCE DATA

Rated pressure	240 bar [3500 psi]
Rated flow	19 l/min [5 US gpm]
Weight	0.07 kg [0.15 lbs.]
Pilot Ratio	3:1
Internal leakage [all leak rates @ 240 bar [3500 psi]]	
Port 3 to 2	5 drops/min. maximum
Port 2 to 1 unsealed piston	140 ml/min. maximum
	zero leakage with sealed piston
Cavity	SDC08-3

Note: A piston seal requires a 2.4 bar [35 psi] or greater return spring

### PERFORMANCE CURVES



### MODEL CODE

SPC2 - 8 - V - P - A - 4T - 15

#### Seal Option

Code	Seal Kit
Omit-Buna-N	02-173326
V-Viton	02-173327
U-Buna-N with no pilot seals	02-173326
W-Viton with no pilot seals	02-173327

#### Housing Material

Omit-No Housing  
A-Aluminum  
S-Steel

#### Crack Pressure

Code	Bar	Psi
15	1.0	[15]
35	2.4	[35]
65	4.5	[65]

#### Housing

Code	Ports	Aluminum heavy duty	Steel heavy duty
Omit	No Housing		
4T	#4 SAE	02-160741	02-160745
6T	#6 SAE	02-160742	02-160744
2G	1/4" BSP	02-160739	02-160743
3G	3/8" BSP	02-160740	02-160746

\*Aluminum bodies are to be used for pressures less than 210 bar [3000 psi].

\* Additional housings available