

Check Valves

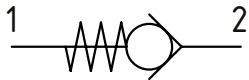
CP100-2

Check Valve, Reverse Direction
350 bar [5000 psi] • 50 l/min [13 US gpm]

DESCRIPTION AND OPERATION

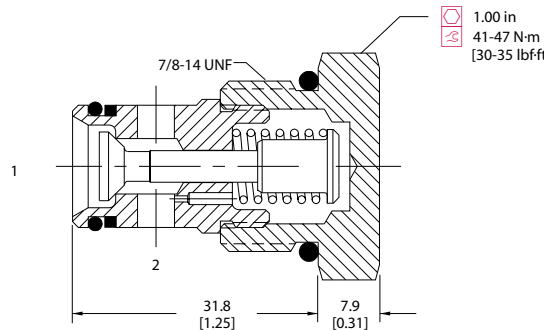
This is a check valve where free flow takes place from port 2 to 1 and is blocked from port 1 to 2.

SCHEMATIC



DIMENSIONS

mm [in]

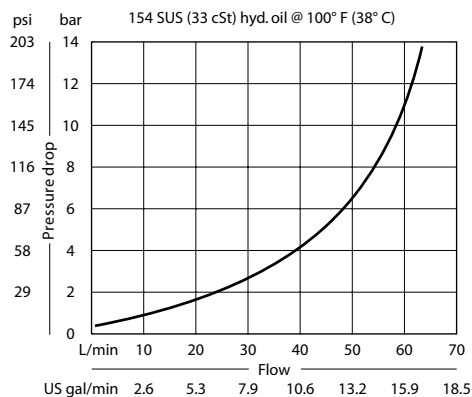


PERFORMANCE DATA

Rated pressure	350 bar [5000 psi]
Rated flow at 7 bar [100 psi]	50 l/min [13 US gpm]
Leakage	6 drops/min @ 210 bar [3000 psi]
Weight	0.08 kg [0.17 lb]
Cavity	SDC10-2

PERFORMANCE CURVES

Pressure drop



MODEL CODE

CP100 - 2 - B - 8S - 005

Seal Option

Code	Seal kit
B-Buna-N	120015
V-Viton	120016

Crack Pressure

Code	Bar	Psi
005	0.34	[5]
015	1.0	[15]
030	2.1	[30]
050	3.4	[50]
065	4.5	[65]
100	6.9	[100]

Housing

Code	Ports & Material	Housing Model Code
0	No Housing	No Housing
DG3B	Al, 3/8 BSP	SDC10-2-DG-3B
DG4B	Al, 1/2 BSP	SDC10-2-DG-4B
6S	Al, #6 SAE	CP10-2-6S
8S	Al, #8 SAE	CP10-2-8S

*Aluminum bodies are to be used for pressures less than 210 bar [3000 psi]
 * Additional housings available