

Check Valves

CP104-2

Check Valve, Reverse Direction

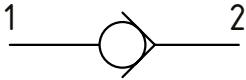
350 bar [5000 psi] • 4.5 l/min [1.2 US gpm]



DESCRIPTION AND OPERATION

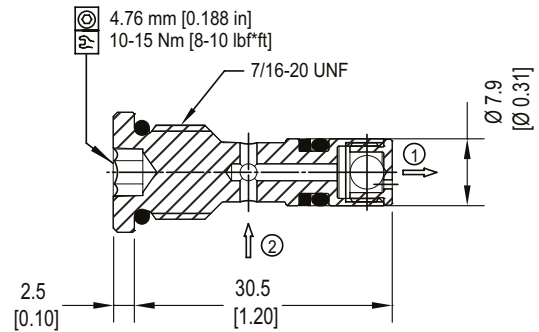
This is a check valve where free flow takes place from port 2 to 1 and is blocked from port 1 to 2.

SCHEMATIC



DIMENSIONS

mm [in]



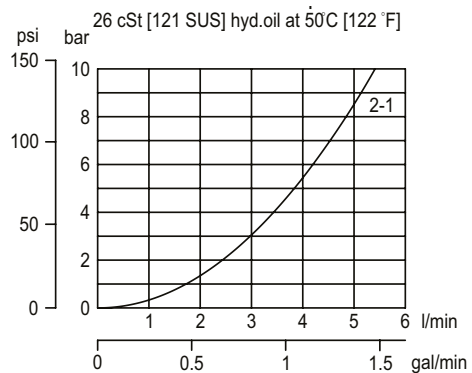
PERFORMANCE DATA

Rated pressure*	350 bar [5000 psi]
Rated flow at 7 bar [100 psi]	4.5 l/min [1.2 US gpm]
Leakage	6 drops/min @ Rated pressure
Weight	0.01 kg [0.022 lb]
Cavity	CP04-2

*Rated pressure based on NFPA fatigue test standard [at 1 million cycles]

PERFORMANCE CURVES

Pressure drop



MODEL CODE

CP104 - 2 - B - 0

Seal Option

Code	Seal kit
B-Buna-N	120077
V-Viton	11019554

Housing

Code	Ports & Material	Housing Model Code
0	No Housing	No Housing
2B	Al, 1/4 BSP	CP04-3-2B
4S	Al, #4 SAE	CP04-2-4S

*Aluminum bodies are to be used for pressures less than 210 bar [3000 psi]

* Additional housings available