

Check Valves

CP410-1

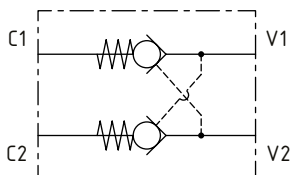
Dual Pilot Operated Check Valves, Line Mounted

210 bar [3000 psi] • 80 l/min [21 US gpm]

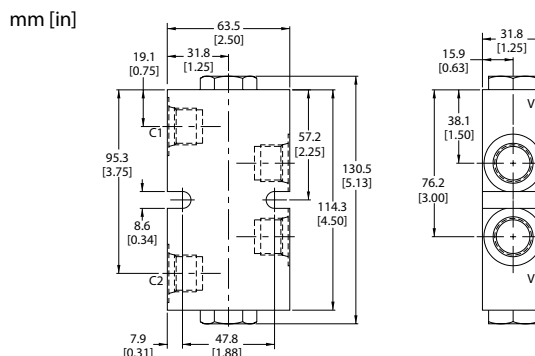
DESCRIPTION AND OPERATION

This is a line mounted, dual pilot operated check valve, which uses two CV10-NP check valves. Free flow takes place from ports V1 to C1 and ports V2 to C2. Flow is blocked from port C1 to V1 until pressure is applied to port V2 and blocked from port C2 to V2 until pressure is applied to port V1.

SCHEMATIC



DIMENSIONS



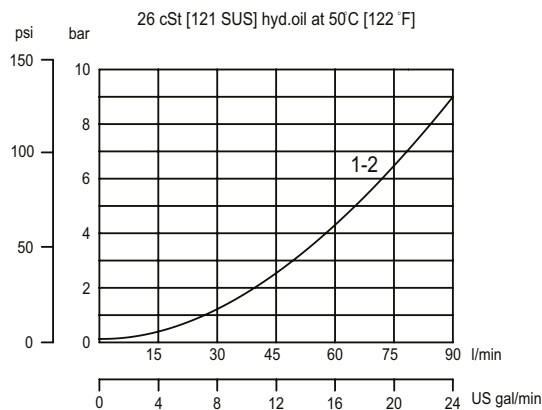
PERFORMANCE DATA

Rated pressure	210 bar [3000 psi]
Rated flow at 7 bar [100 psi]	80 l/min [21 US gpm]
Leakage	6 drops/min @ Rated pressure
Weight	0.67 kg [1.48 lb]
Pilot Ratio	4:1

Note: A piston seal requires a 4.5 bar [65 psi] or greater return spring.

PERFORMANCE CURVES

Pressure drop



MODEL CODE

CP410 - 1 - B - 8S - 0 - 065

Seal Option

Code	Seal kit	W/Pilot Seal Option
B -Buna-N	120072	120176
V -Viton	120161	120177

Housing

Code	Ports	Housing Model Code
6S	AI, #6 SAE	220099
8S	AI, #8 SAE	220100
3B	AI, 3/8 BSP	221794
4B	AI, 1/2 BSP	221652

*Aluminum bodies are to be used for pressures less than 210 bar [3000 psi]
* Additional housings available

Crack Pressure

Code	Bar	Psi
065	4.5	[65]

Pilot Seal Option

- 0**-No seals
- S**-Seals