

# Check Valves

## RPC 04

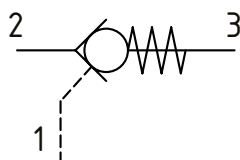
Pilot Operated Check Valve, Port 1 Pilot to Open

350 bar [5000 psi] • 21 l/min [5.5 US gpm]

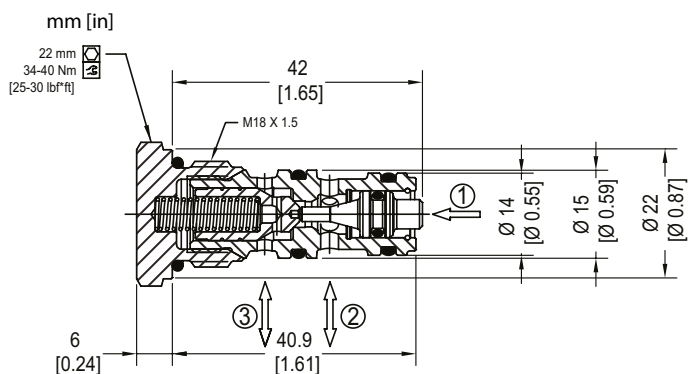
### DESCRIPTION AND OPERATION

This is a pilot operated check valve where free flow takes place from port 2 to 3 and is blocked from port 3 to 2 until pilot pressure is applied to port 1.

### SCHEMATIC



### DIMENSIONS



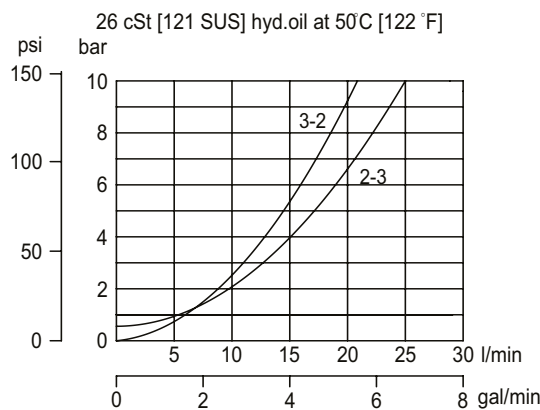
### PERFORMANCE DATA

Rated pressure*	350 bar [5000 psi]
Rated flow at 7 bar [100 psi]	21 l/min [5.5 US gpm]
Weight	0.06 kg [0.13 lb]
Pilot Ratio	3.2:1
Cavity	NCS04/3

\*Rated Pressure based on NFPA fatigue test standard [at 1 million cycles]  
Note: A piston seal requires a 5 bar [72.5 psi] or greater return spring.

### PERFORMANCE CURVES

#### Pressure drop



### MODEL CODE

**RPC04 - 2.5 - OR - 00 - V**

#### Crack Pressure

Code	Bar	Psi
0.5	0.5	[7.3]
2.5	2.5	[36]
5	5	[73]
8	8	[116]
15	15	[218]

#### Pilot Seal Option

Omit -No seals  
OR -Seals

#### Seal Option

Code	Seal kit
Omit-Buna-N	230000160
V-Viton	230000450

#### Housing

Code	Ports & Material	Housing Model Code
00	No Housing	No Housing
SE1/4	AL, 1/4 BSP	NCS04/3-SE-1/4
SE4S	AL, #4 SAE	NCS04/3-SE-4S
SE6S	AL, #6 SAE	NCS04/3-SE-6S

\*Aluminum bodies are to be used for pressures less than 210 bar [3000 psi].  
\* Additional housings available