

Check Valves

RPC 12

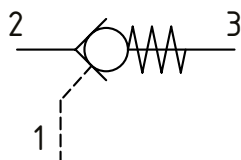
Pilot Operated Check Valve, Port 1 Pilot to Open

315 bar [4600 psi] • 90 l/min [24 US gpm]

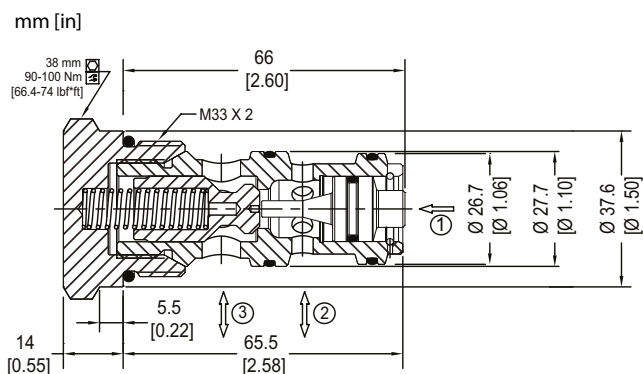
DESCRIPTION AND OPERATION

This is a pilot operated check valve where free flow takes place from port 2 to 3 and is blocked from port 3 to 2 until pilot pressure is applied to port 1.

SCHEMATIC



DIMENSIONS



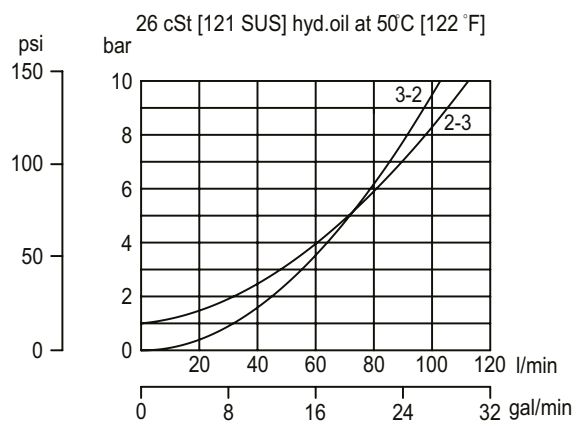
PERFORMANCE DATA

Rated pressure	315 bar [4600 psi]
Rated flow at 7 bar [100 psi]	90 l/min [24 US gpm]
Weight	0.20 kg [0.44 lb]
Pilot Ratio	2.8:1
Cavity	NCS12/3

Note: A piston seal requires a 5 bar [72.5 psi] or greater return spring.

PERFORMANCE CURVES

Pressure drop



MODEL CODE

RPC12 - 5 - OR - 00 - V

Crack Pressure

Code	Bar	Psi
0.5	0.5	[7]
2.5	2.5	[36]
5	5	[73]
10	10	[145]

Pilot Seal Option

Omit-No seals
OR-Seals

Seal Option

Code	Seal kit
Omit -Buna-N	230000130
V -Viton	230000360

Housing

Code	Port & Material	Housing Model Code
00	No Housing	No Housing
SE1/2	AL, 1/2 BSP	NCS12/3-SE-1/2
SE3/4	AL, 3/4 BSP	NCS12/3-SE-3/4
SE85	AL, #8 SAE	NCS12/3-SE-85
SE125	AL, #12 SAE	NCS12/3-SE-125

*Aluminum bodies are to be used for pressures less than 210 bar [3000 psi]
* Additional housings available