

# Check Valves

## RPV 06

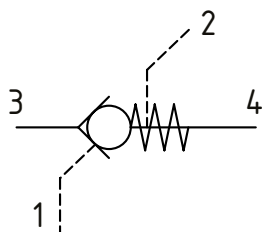
Pilot Operated Check Valve, Port 1 Pilot to open with Drain

315 bar [4600 psi] • 30 l/min [8 US gpm]

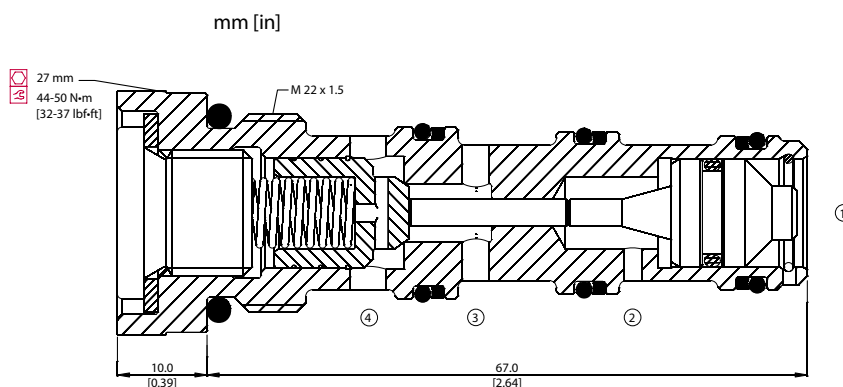
### DESCRIPTION AND OPERATION

This is a pilot operated check valve with a separate drain. Free flow takes place from port 3 to 4 and is blocked from port 4 to 3 until pilot pressure is applied to port 1. Port 2 is drained to tank to remove any effect of pressure in port 3 affecting the pilot pressure required to keep the valve open.

### SCHEMATIC



### DIMENSIONS

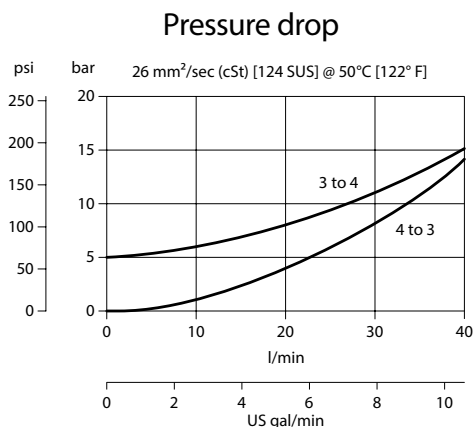


### PERFORMANCE DATA

Rated pressure	315 bar [4600 psi]
Rated flow at 7 bar [100 psi]	30 l/min [8 US gpm]
Weight	0.13 kg [0.29 lb]
Pilot Ratio	3.4:1
Cavity	NCS06/4

Note: A piston seal requires a 4.5 bar [65 psi] or greater return spring.

### PERFORMANCE CURVES



### MODEL CODE

**RPV 06 - 5 - OR - 00 - V**

#### Pilot Seal Option

**OR**-Seals  
**Omit**-No seals

#### Housing

Code	Ports & Material	Housing Model Code
00	No Housing	No Housing
L3/8	Al, 3/8 BSP	NCS06/4-L-3/8
L3/4	Al, 3/4 BSP	NCS06/4-L-1/2
L6S	Al, #6 SAE	NCS06/4-L-6S
L8S	Al, #8 SAE	NCS06/4-L-8S

\*Aluminum bodies are to be used for pressures less than 210 bar [3000 psi]  
 \*Additional housings available

#### Seal Option

Code	Seal kit
<b>V</b> -Viton	Consult factory
<b>Omit</b> -Buna-N	230000080