

Check Valves

RS 06

Check Valve, In-line, Female Port
350 bar [5000 psi] • 30 l/min [8 US gpm]

DESCRIPTION AND OPERATION

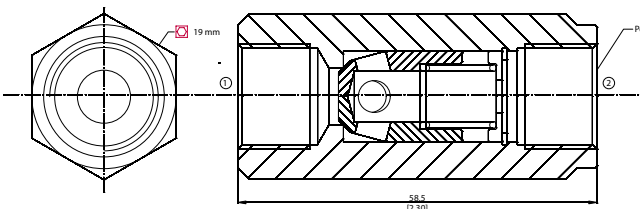
This is an in-line check valve where free flow takes place from port 1 to 2 and is blocked from port 2

SCHEMATIC



DIMENSIONS

mm [in]

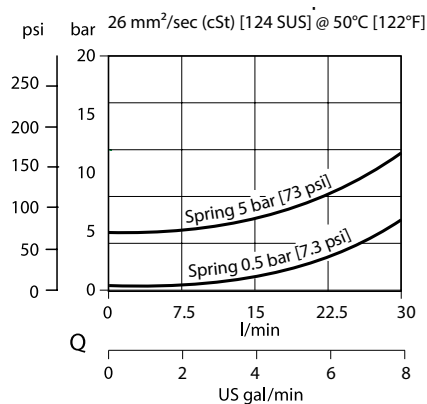


PERFORMANCE DATA

Rated pressure	350 bar [5000 psi]
Rated flow	30 l/min [8 US gpm]
Weight	0.08 kg [0.18 lb]

PERFORMANCE CURVES

Pressure drop



MODEL CODE

RS06 - 0.5 - G

Crack Pressure

Code	Bar	Psi
0.5	0.5	[7.3]
5	5	[73]

Ports

A-#6 SAE
 G-1/4 BSP